

## 1 Description

This pushplate is designed to fit into either double-gang or 4x4 electrical boxes. Typical uses include controlling inside and outside doors of a vestibule. The faceplates are made of 1/16" thick stainless steel for durable use. The pushplate may be hard wired to the door operator or connected to a radio-controlled transmitter.

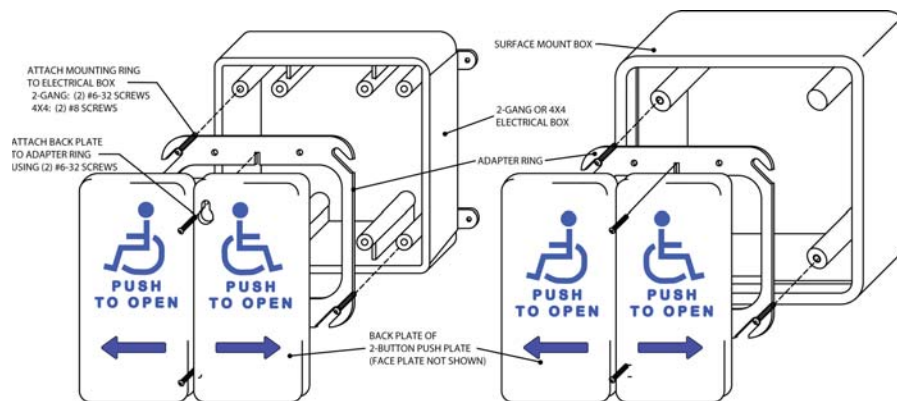
## 2 Precautions



- ❑ Shut off all power before attempting any wiring procedures.
- ❑ Maintain a clean & safe environment when working in public areas.
- ❑ Constantly be aware of pedestrian traffic around the area.
- ❑ Always stop pedestrian traffic through the doorway when performing tests that may result in unexpected reactions by the door.
- ❑ ESD electrostatic discharge: Circuit boards are vulnerable to damage by electrostatic discharge. Before handling any board ensure you dissipate your body's charge.
- ❑ Always check placement of all wiring before powering up to insure that moving parts will not catch any wires and cause damage to equipment.
- ❑ Ensure compliance with all applicable safety standards (i.e. ANSI A156.10 / 19) upon completion of installation.
- ❑ DO NOT attempt any internal repair of the sensor. All repairs and/or component replacements must be performed by LCN, Inc. Unauthorized disassembly or repair:
  1. May jeopardize personal safety and may expose one to the risk of electrical shock.
  2. May adversely affect the safe and reliable performance of the product will result in a voided product warranty.

## 3 Installation

1. Attach the adapter ring to the electrical box. Use (2) #6-32 screws for 2-gang electrical boxes or (2) #8-32 screws for 4x4 boxes.
2. Wire the switches of the pushplates to the door controllers or radio controlled transmitters using the NO or NC contacts and common.
3. Start (2) #6-32 screws into the center holes of the adapter ring. Place the keyway-shaped holes of the backplate over the holes, and fully tighten the screws with the enclosed hex key.
4. Test the pushplates for proper activation.



## 4 Cleaning

The pushplates are constructed with durable stainless steel and painted with scuff-resistant coatings. To clean the plates, use only a damp, non-abrasive cloth. Repeated cleaning with harsh solvents or abrasive materials may cause deterioration of the coating. Please make the end-user aware of this procedure.

## 5 Company Contact