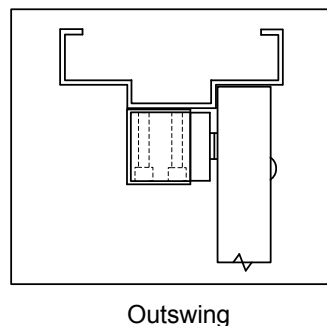
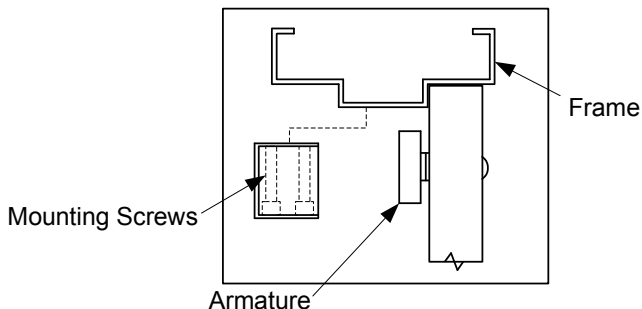
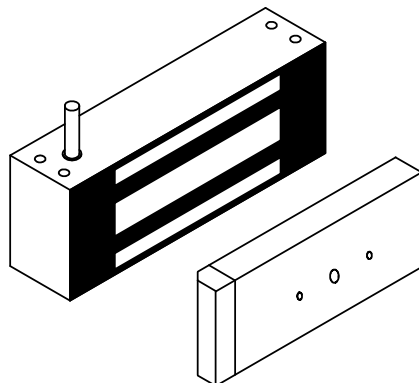




801 Avenida Acaso, Camarillo, Ca. 93012
 (805) 494-0622 • Fax: (805) 494-8861
 www.sdcsecurity.com • E-mail: service@sdsecurity.com

INSTALLATION INSTRUCTIONS E6200 SERIES MAGNETIC LOCK

The E6200 Series magnetic lock is mounted to the underside of the header, on the stop side of the door.



Electrical Instructions:

Use properly fused U. L. Listed Power Supply

Do not install a diode in parallel with any magnetic lock. A diode will cause a delay when releasing the door and residual magnetism to occur.

Although SDC recommends the use of a DC power supply, a transformer with an adjacent mounted full wave bridge rectifier may be used. A significant drop will occur when using a full wave bridge rectifier.

Any low voltage condition will cause erratic operation of the optional board sensor.

When using a full wave bridge rectifier all access controls and/or release contacts must be located between the EMlock and rectifier to ensure quick release.

Electrical Specifications:

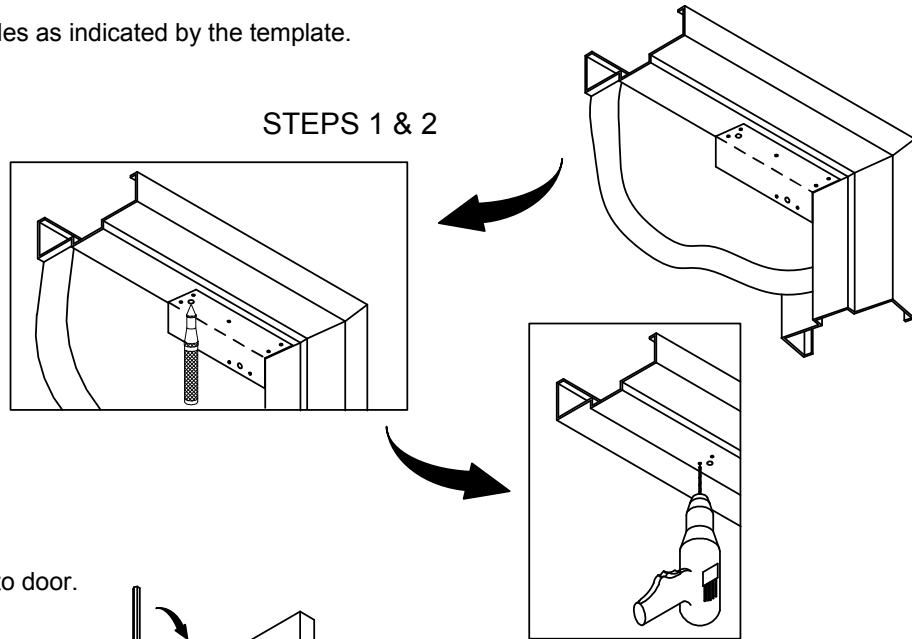
Dual Voltage 12 or 24VDC

Power Consumption .250mA@12VDC
 .125mA@24VDC

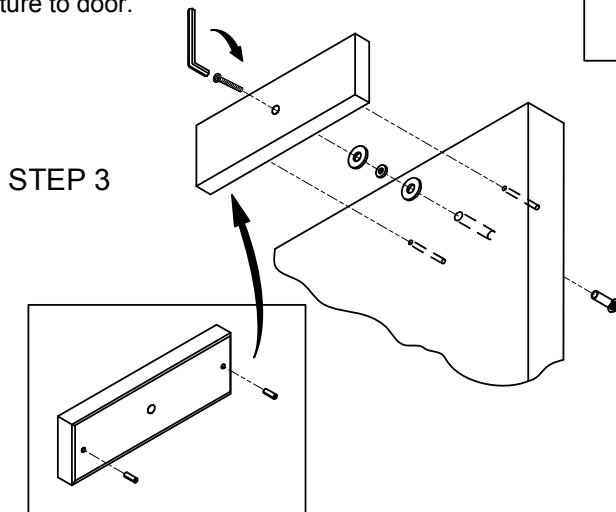
DS Door Status Sensor SPDT, 500mA@30VDC
 LS Lock Status Sensor SPDT, 2A@30VDC

Any suggestions or comments to this instruction or product are welcome. Please contact us through our website or email engineer@sdsecurity.com

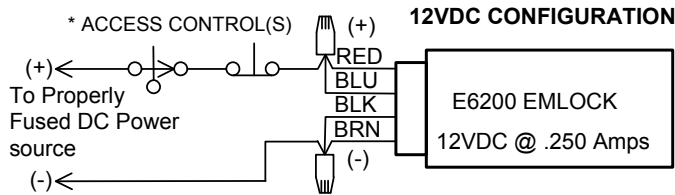
1. Fold template as indicated on dotted line. For single doors locate template against the door and header on the lock jamb side of the frame.
2. Mark and drill holes as indicated by the template.



3. Mount armature to door.

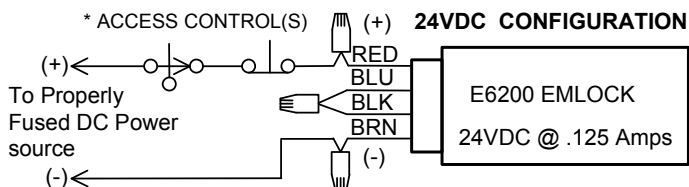


4. WIRING DETAILS:



BOND SENSOR (BAS) WIRING

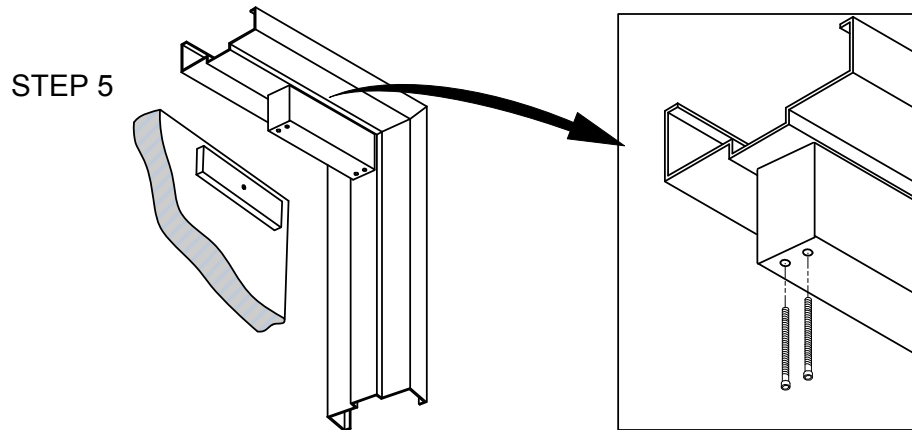
WIRE COLOR	CONTACT	DESCRIPTION
YEL	N/O	GOOD BOND
GRN	COM	COMMON
ORG	N/C	NO/POOR BOND



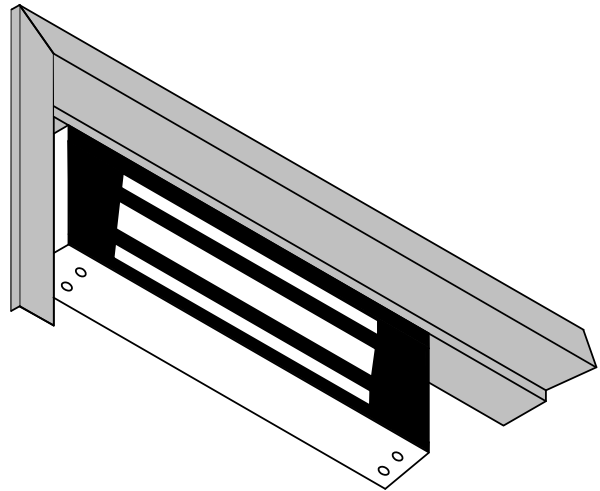
DOOR POSITION SENSOR (DPS) WIRING

WIRE COLOR	CONTACT	DESCRIPTION
WHT	N/O	ACTIVATE WHEN DOOR OPEN
GRY	COM	COMMON
VIO	N/C	ACTIVATE WHEN DOOR CLOSED

5. Install magnet onto the header with the magnetic face towards the door side of the stop. Assure that the magnet and armature line up properly, then tighten down ALL mounting screws.



6. Test operation. When all is operating properly, install anti-tamper plugs over socket head screws using a soft hammer to avoid damage to the housing.



MODEL E6200

