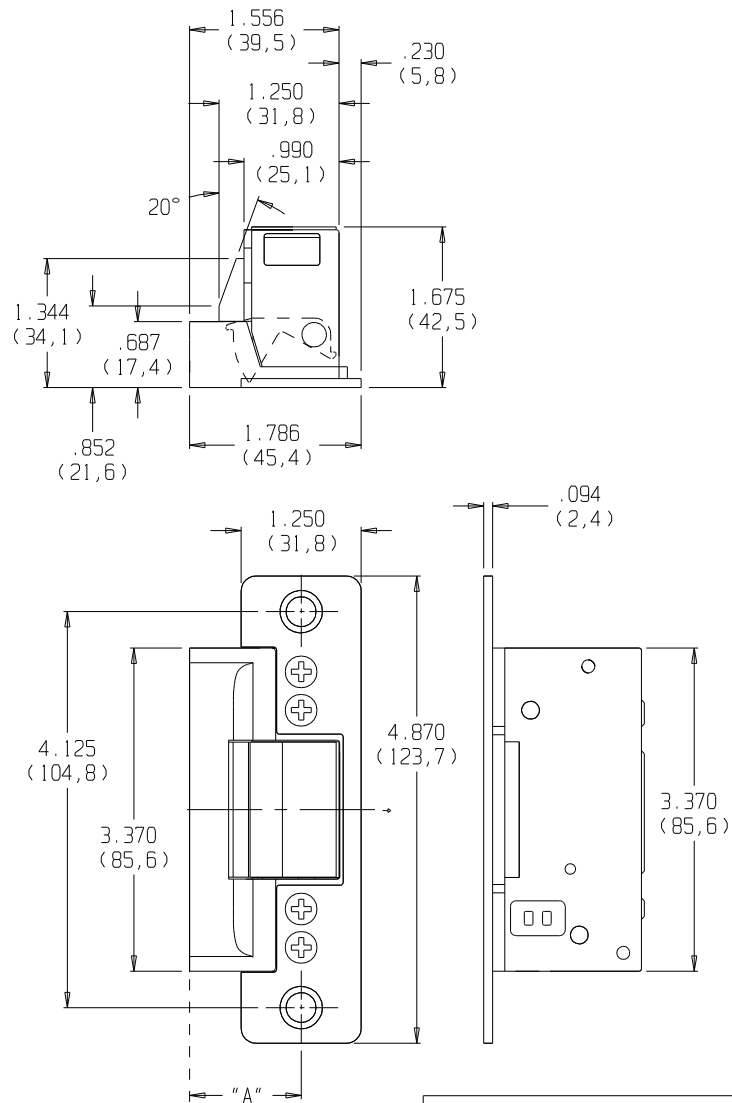


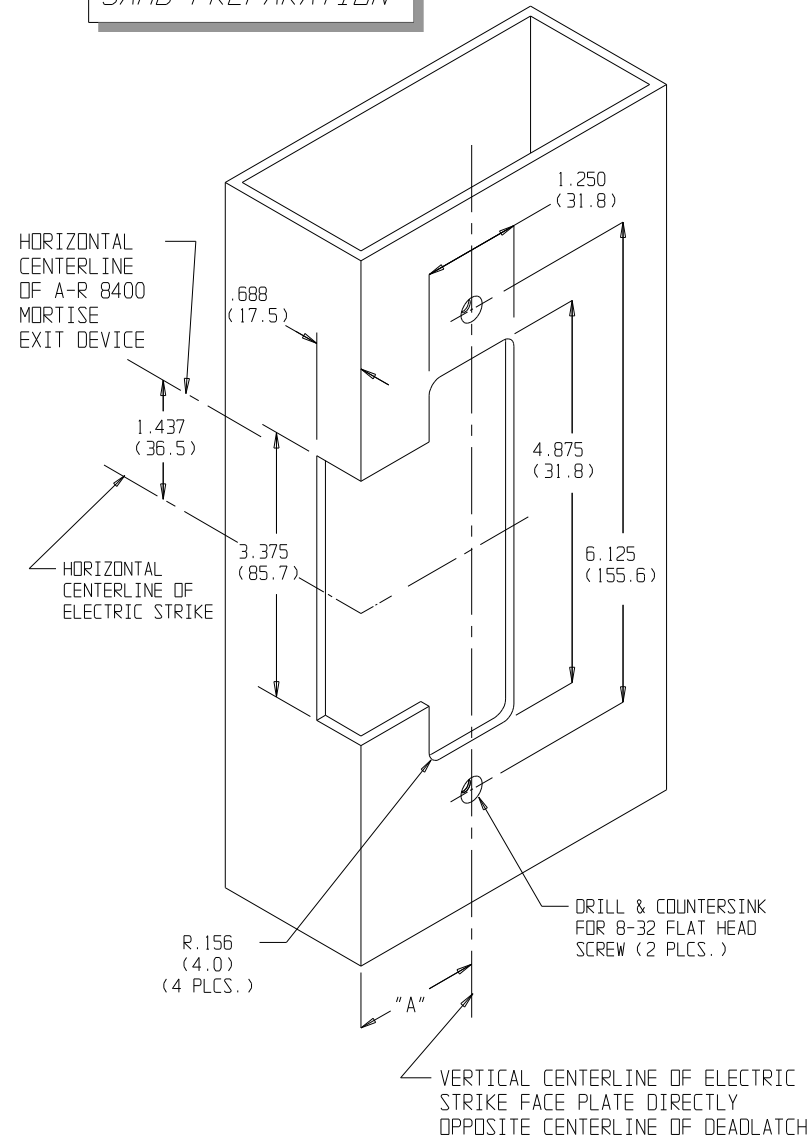
ELECTRIC STRIKE DIMENSIONS



STANDARD UNIT FITS DIM. "A" UP TO 1.06" (SEE DASH NO.)

| FOR EXTENDED LIP: (DIM "A" DOOR → TO JAMB EDGE) | | | | | |
|---|---------|----------|---------|----------|---------|
| DASH NO. | DIM "A" | DASH NO. | DIM "A" | DASH NO. | DIM "A" |
| NONE | 1.06 | -05 | 2.00 | -10 | 2.63 |
| -01 | 1.50 | -06 | 2.13 | -11 | 2.75 |
| -02 | 1.63 | -07 | 2.25 | -12 | 2.88 |
| -03 | 1.75 | -08 | 2.38 | -13 | 3.00 |
| -04 | 1.88 | -09 | 2.50 | | |

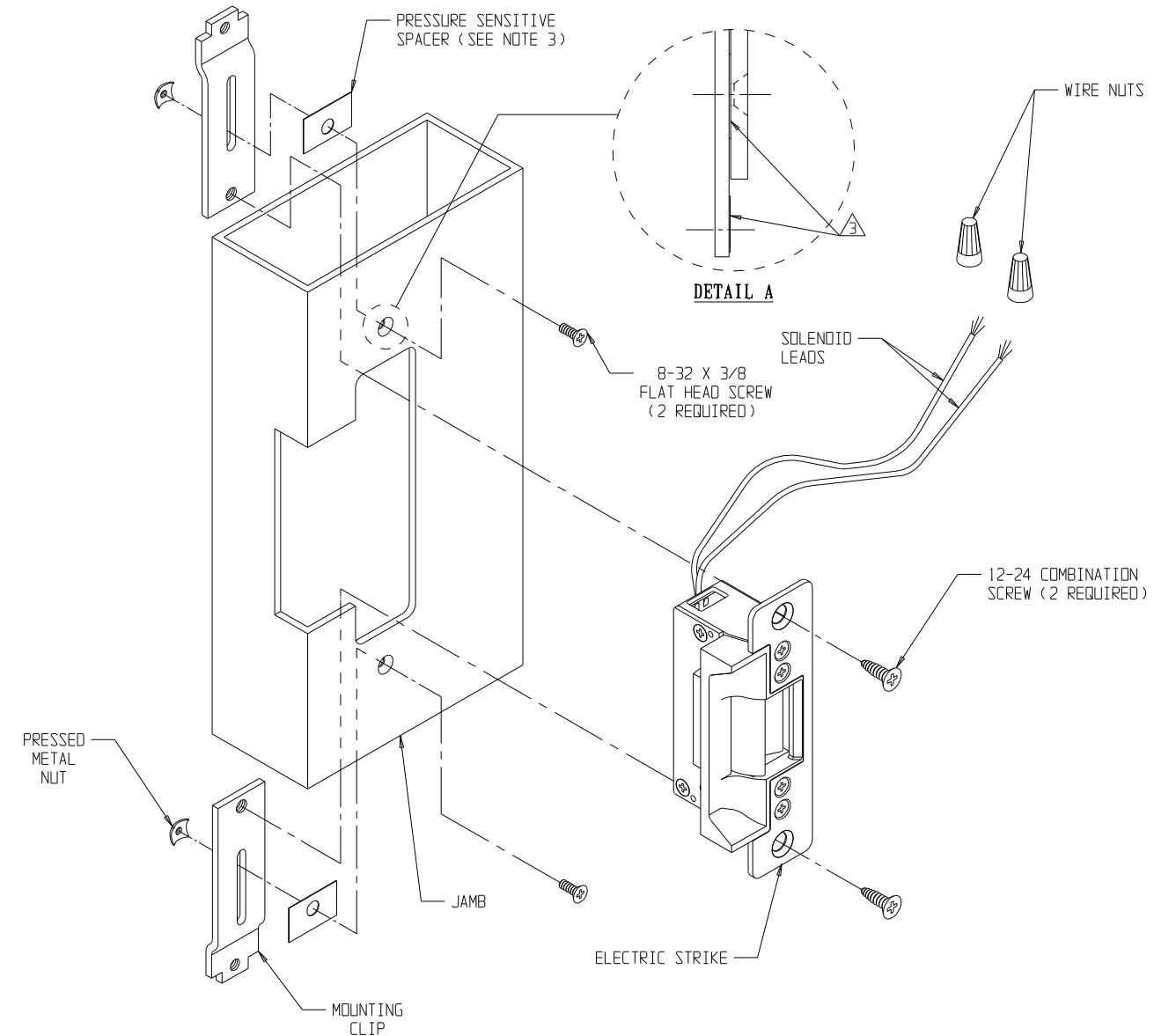
JAMB PREPARATION



INSTALLATION INSTRUCTIONS

1. PREPARE DOOR JAMB PER DRAWING.
2. INSTALL MOUNTING CLIPS TO JAMB USING 8-32 x 3/8 SCREWS & PRESSED METAL NUTS. LEAVE SCREWS SLIGHTLY LOOSE TO PERMIT EASY ALIGNMENT OF CASE ASSEMBLY & CLIPS.
3. SPACERS ARE PROVIDED TO ASSURE FLUSH FINAL ASSEMBLY OF FACE PLATE & JAMB. ADD ONE OR MORE SPACERS BETWEEN JAMB & MOUNTING CLIP WHEN FACE PLATE EXTENDS BEYOND THE JAMB. WHEN THE FACE PLATE SETS INSIDE THE JAMB, SPACERS MUST BE ADDED BETWEEN THE MOUNTING CLIP & THE ELECTRIC STRIKE FACE PLATE. SEE DETAIL "A" TO ATTACH SPACER TO MOUNTING CLIP. REMOVE PROTECTIVE COATING FROM SPACER & PRESS TO DESIRED MOUNTING CLIP SURFACE. MAKE SURE CLEARANCE HOLE IN SPACER ALIGNS WITH HOLE IN MOUNTING CLIP.
4. ATTACH SUBCOVER AND FACE PLATE TO THE CASE ASSEMBLY USING FOUR 8-32 X 1/4 SCREWS.
5. USING WIRE NUTS PROVIDED, CONNECT WIRES COMING FROM THE STRIKE TO THE WIRES COMING FROM THE LOW VOLTAGE SIDE OF THE TRANSFORMER.
6. INSERT ELECTRIC STRIKE INTO JAMB AND ATTACH TO THE CLIPS USING TWO #12 COMBINATION SCREWS.
7. SECURE 8-32 SCREWS HOLDING MOUNTING CLIPS TO JAMB.

| STATIC STRENGTH | DYNAMIC STRENGTH | ENDURANCE |
|-----------------|---------------------|----------------|
| 1500 lbs. | 70-foot-pound-force | 250,000 cycles |



PAGE 1 OF 2
PAGE 2 OF 2 IS 80-0180-381 REV. H

PRODUCT MUST BE INSTALLED ACCORDING TO ALL APPLICABLE BUILDING AND LIFE SAFETY CODES

REF. TEMPLATE NO. : 52080-0



www.adamsrite.com
Phone: 800-626-7590
800-872-3267
Fax: 866-582-4641
800-232-7329

80-0180-356

Rev. G

Ecn 11955B

Date: 06/28/12

7108 ELECTRIC STRIKE FOR ALUMINUM JAMB W/ 8400 MORTISE EXIT

Page 1 of 1

Appvd: MP

Date: 07/06/12