

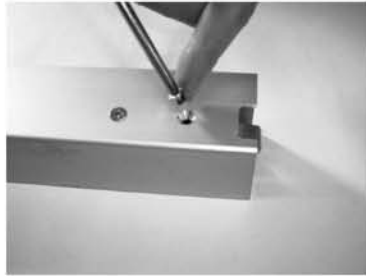


**Series 3600
Concealed Vertical Rod
Exit Devices**

**(630) 350-2770
WWW.firstchoicebuildingproducts.com**

TO INSTALL VERTICAL ROD LATCHES

(Rods are factory preset for door height of 83 3/16" and a cylinder location of 41 5/16" - see page 4 for additional details.)



Install top latch mechanism using 2 ea. #10-32x1/4" screws.



Affix bent end of rod to door using rod bushing with "E" ring.

INSTALL BOTTOM ROD ASSEMBLY IN THE SAME MANNER AS ABOVE.

TO INSTALL ACTIVATING DEVICE

Prepare door as per template on page 8.

Install the hinge stile mounting bracket with 2 ea. 1/4-20 x 1/2" pan head screws leaving space to capture the base of the device (see next step).



TO INSTALL ACTIVATING DEVICE CONTINUED

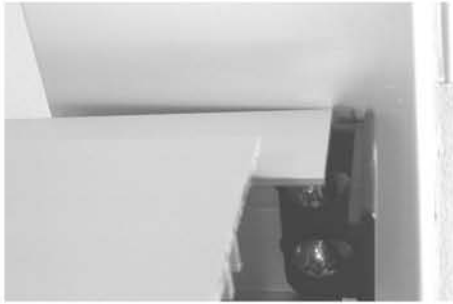


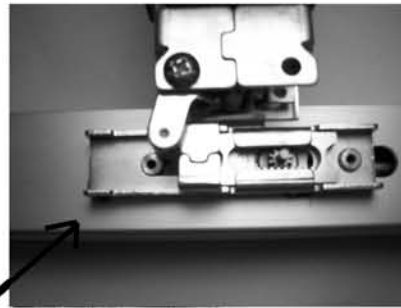
Fig. A



Fig. B

Slip the device base under the mounting bracket (Fig. A) and attach device to the lock stile with 2 ea. $\frac{1}{4}$ -20x $\frac{1}{2}$ " flat head screws (Fig. B). Tighten all four $\frac{1}{4}$ -20 screws to secure the device.

With the traveler positioned as shown, locate it over the rod ends.



TRAVELER

CHECK ROD OPERATION



When tripped by hand, **the top latch** should swing freely through it's travel.

If not completely free, lengthen the top rod by loosening the jamb nut and rotating the rod counter-clockwise.



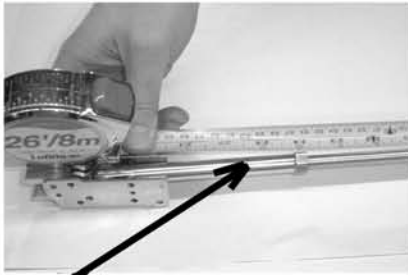
The **bottom latch** should protrude $\frac{1}{16}$ " or less beyond the bottom of the door.

To shorten the bottom rod, loosen the jamb nut and rotate the rod clockwise.

CHECK ROD OPERATION CONTINUED

After un-dogging the device –

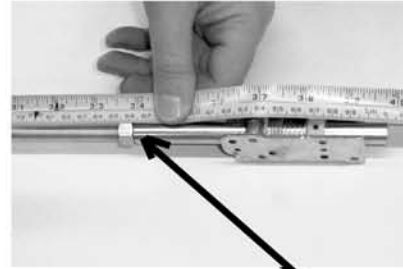
The top latch should **not** trip when operated by hand. If hand pressure can trip the latch, shorten the rod by loosening the jamb nut and rotating the rod clock-wise.



34 1/4"

The top rod is factory set to 34-1/4" measured from the bent end to the latch side of the jamb nut.

NOTE–The bottom rod may require adjustment to accommodate changes to the top rod.



34 1/16"

The bottom rod is factory set to 34-1/16" measured from the bent end to the latch side of jamb of jamb nut.

FOR DEVICES WITH KEY CYLINDER

Prepare doors with cylinder holes as per template on page 8.

Trim the cylinder tail piece so that it is slightly below the door face after mounting.

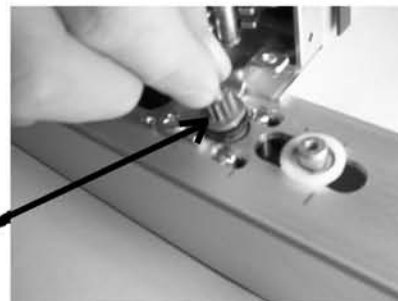
Install key cylinder using mounting screws supplied with the cylinder. (The screws may need to be shortened.)



TRIMMED TAILPIECE.

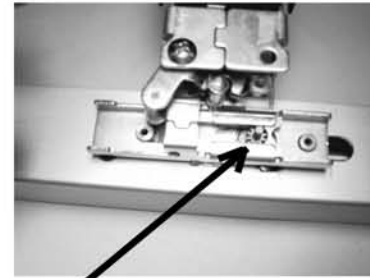
Install the pinion gear and bushing with the indicator edge up. This will align the slots to match the tail piece.

ALIGN FLAT SIDE TO
TOP OF DOOR.



FOR DEVICES WITH KEY CYLINDER CONTINUED

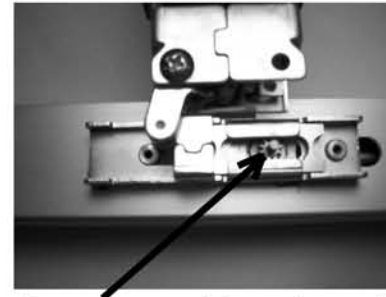
With the retractor installed into the traveler, position the **retractor** over the pinion gear and position the **traveler** over the rod ends. (Temporarily removing the crank roller may facilitate this procedure.)



(SETTING FOR HOLD BACK)

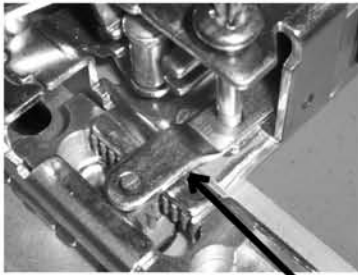
Set retractor at the top of rotation for cylinder Hold Back function, or set it midway along the rotation for Night Latch function.

Proceed to next step to secure pinion gear.



(SETTING FOR NIGHT LATCH)

TO SECURE THE PINION GEAR:



PINION RETAINER

Install the pinion retainer over the pinion and onto the crank bracket using an axle screw.

COMPLETING THE INSTALLATION:



Mount the inactive side end cap using 2 ea. #8-32 x 1 1/2" screws.



Install active side cover using two each #10-32 x 3/8" screws.

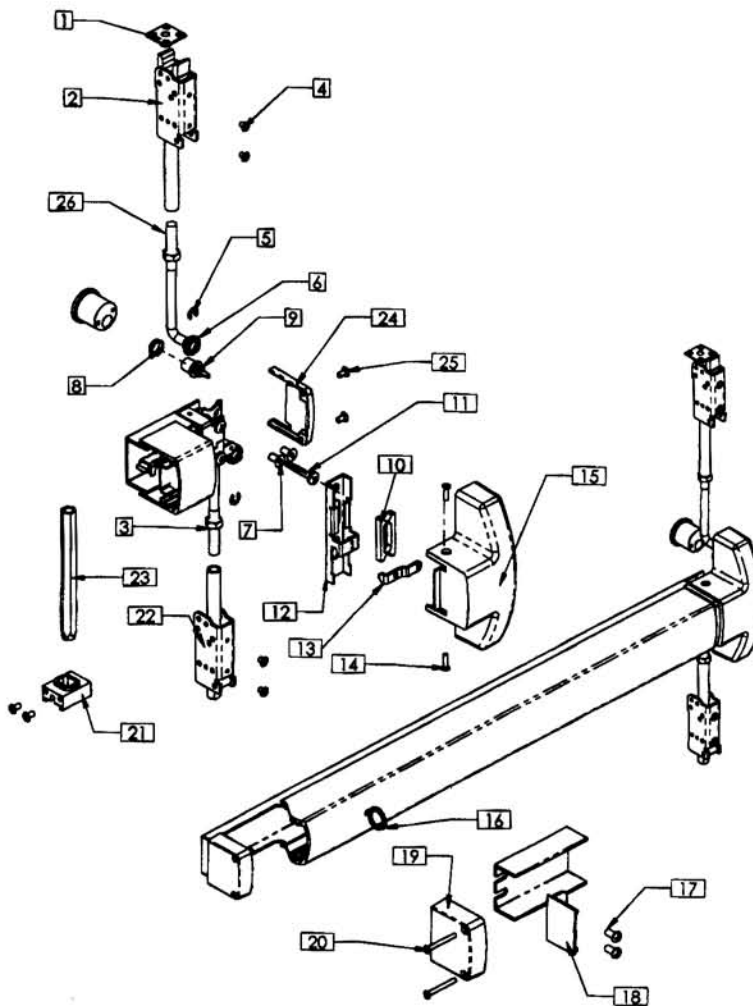
TO CHANGE HAND OF DEVICE:



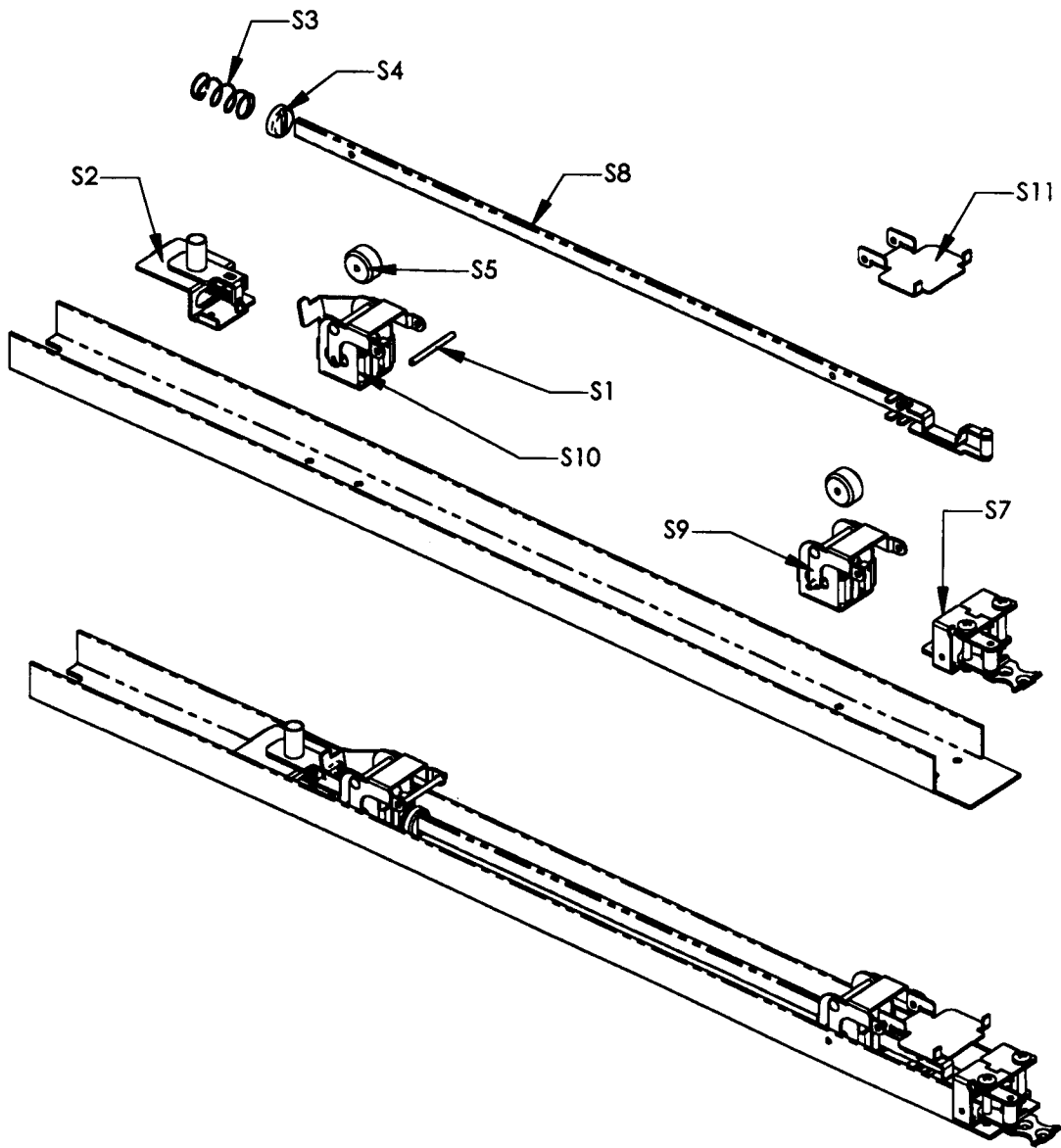
Remove the crank roller assembly axle screw from crank bracket.



Flip the crank roller assembly over and locate on the opposite side of the crank bracket. Reattach with the axle screw.



| <i>Reference Number</i> | <i>Description</i> | <i>Part Number</i> | <i>Quantity Per Device</i> |
|-------------------------|--|------------------------------|----------------------------|
| 1 | Top Strike Kit - SS Consists of: Top Strike (1 ea.) Strike Shim (3 ea.) | 9038 16001238 16001118 | 1 |
| 2 | Top Latch Assembly | 42 | 1 |
| 3 | Jamb Nut | 806 | 2 |
| 4 | Latch Housing Screw | 811-CL , 811-BR | 4 |
| 5 | Retaining E-Ring | 809 | 2 |
| 6 | Rod Bushing | 810 | 2 |
| 7 | Lock Stile Mounting Screw | 816 | 2 |
| 8 | Cylinder Bushing | 16001004 | 1 |
| 9 | Pinion | 16001007 | 1 |
| 10 | Retractor | 16001003 | 1 |
| 11 | Axle Screw | 3 | 1 |
| 12 | Traveler | 16001098 | 1 |
| 13 | Pinion Support Bracket | 821 | 1 |
| 14 | Cover Screw | 804 | 2 |
| 15 | Center Case Cover | 40 | 1 |
| 16 | Dogging Key | 819 | 1 |
| 17 | Hinge Stile Mounting Screw | 801 | 2 |
| 18 | Channel End Cap | 33 | 1 |
| 19 | Hinge Stile Push Bar End Cap | 30 | 1 |
| 20 | End Cap Mounting Screw | 802 | 2 |
| 21 | Weighted Latch Guide w/ Screws | 77 | 1 |
| 22 | Bottom Latch Assy - Spring | 45 | 1 |
| 23 | Bottom Latch Assy - Weighted | 76 | 1 |
| 24 | Lock Stile End Cap | 50 | 1 |
| 25 | LS End Cap Mounting Screw | 838 | 2 |
| 26 | Vertical Rod w/ locking nut | 16001015 | 2 |



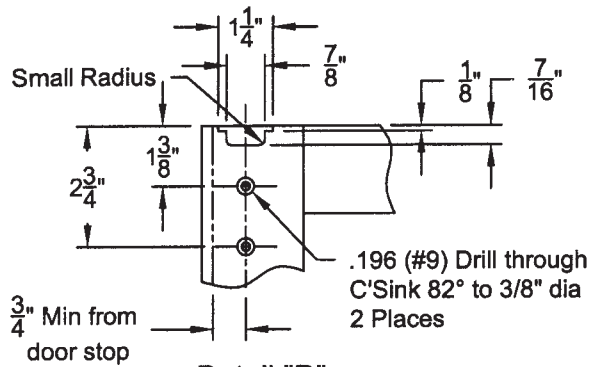
| Reference Number | Description | Part Number | Quantity Per Device |
|-------------------------|--------------------------------|--------------------|----------------------------|
| S1 | Axle Pins | 14 | 2 |
| S2 | Dogging Assy. | 71 | 1 |
| S3 | Spring | 23 | 1 |
| S4 | Spring Cap | 24 | 1 |
| S5 | Roller Stop | 17 | 2 |
| S7 | Crank Bracket Assy. | 9040 | 1 |
| S8 | Activating Connecting Rod | 21 | 1 |
| S9 | Lock Stile Activating Bracket | 9034 | 1 |
| S10 | Hinge Stile Activating Bracket | 70 | 1 |
| S11 | Push Bar Bracket | 15 | 1 |

ADDITIONAL ITEMS NOT REFERENCED -

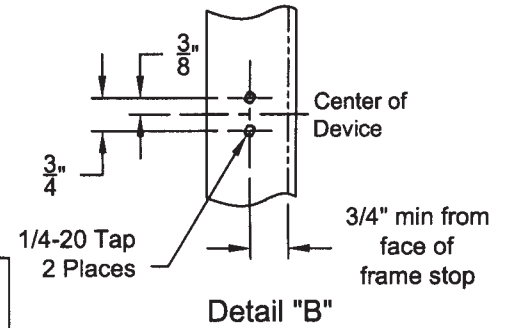
| | | |
|---|------------------|----------|
| <i>Bottom Rod & Latch Assy - Spring</i> | <i>9045</i> | <i>1</i> |
| <i>Bottom Rod & Latch Assy - Weighted</i> | <i>9076</i> | <i>1</i> |
| <i>Pullman Top Latch For Electric Strike</i> | <i>P42</i> | <i>1</i> |
| <i>Top Rod & Latch Assy.</i> | <i>9042</i> | <i>1</i> |
| <i>Push Bar Assy - x Long - Clear</i> | <i>360036-CL</i> | <i>1</i> |
| <i>Push Bar Assy - x Long - Bronze</i> | <i>360036-BR</i> | <i>1</i> |

Concealed Vertical Rod Panic For Bottom Rod Latch Installation Template

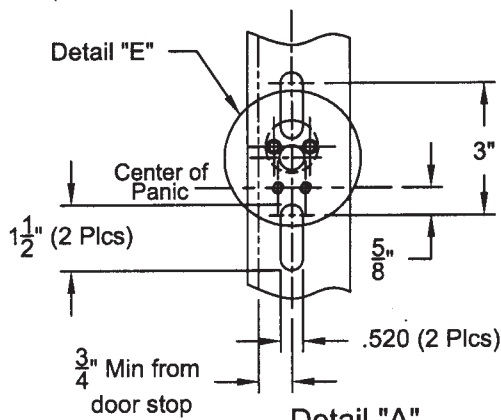
All prep is on interior side of door, except where noted.
Right Hand door shown. (LHRB)



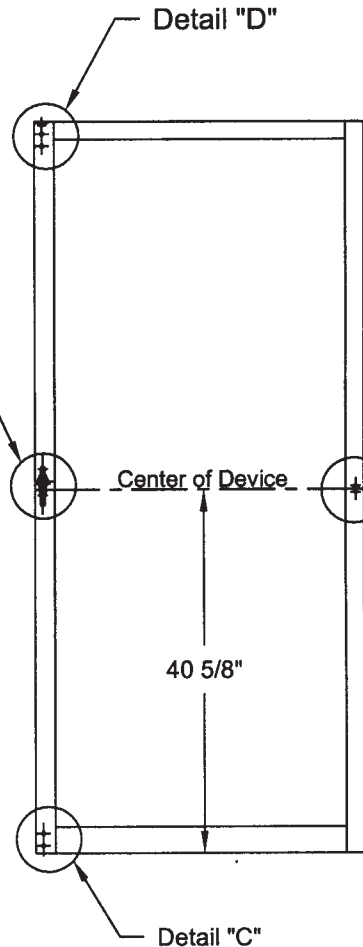
Detail "D"
Top Latch
Cutout inside face only!



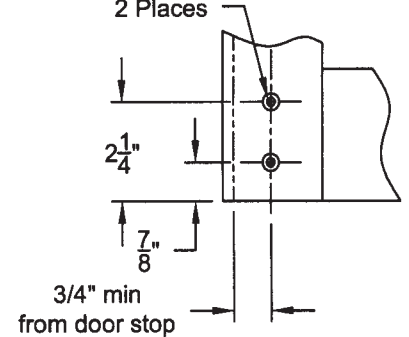
Detail "B"



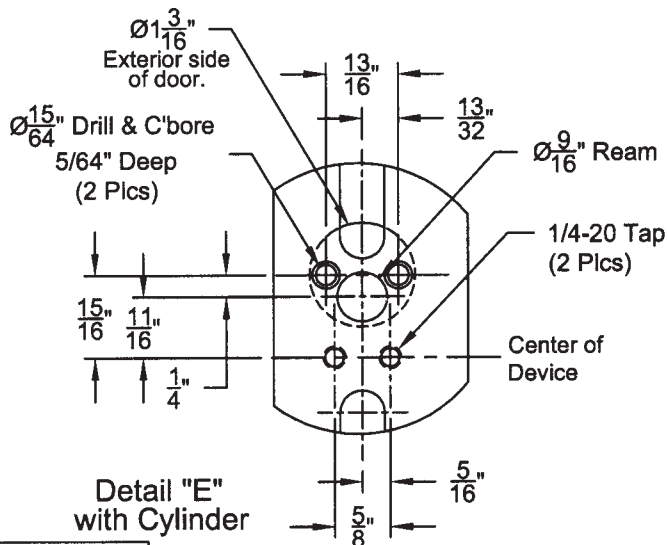
Detail "A"



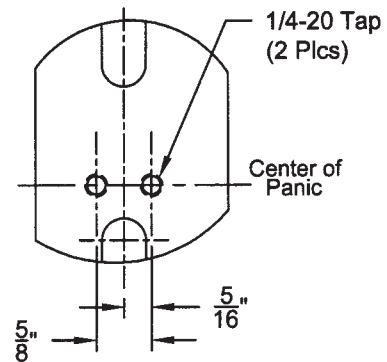
.196 (#9) Drill through C'sink 82° to 3/8" dia 2 Places



Detail "C"
for Rod Latch



Detail "E"
with Cylinder



Detail "E"
without Cylinder