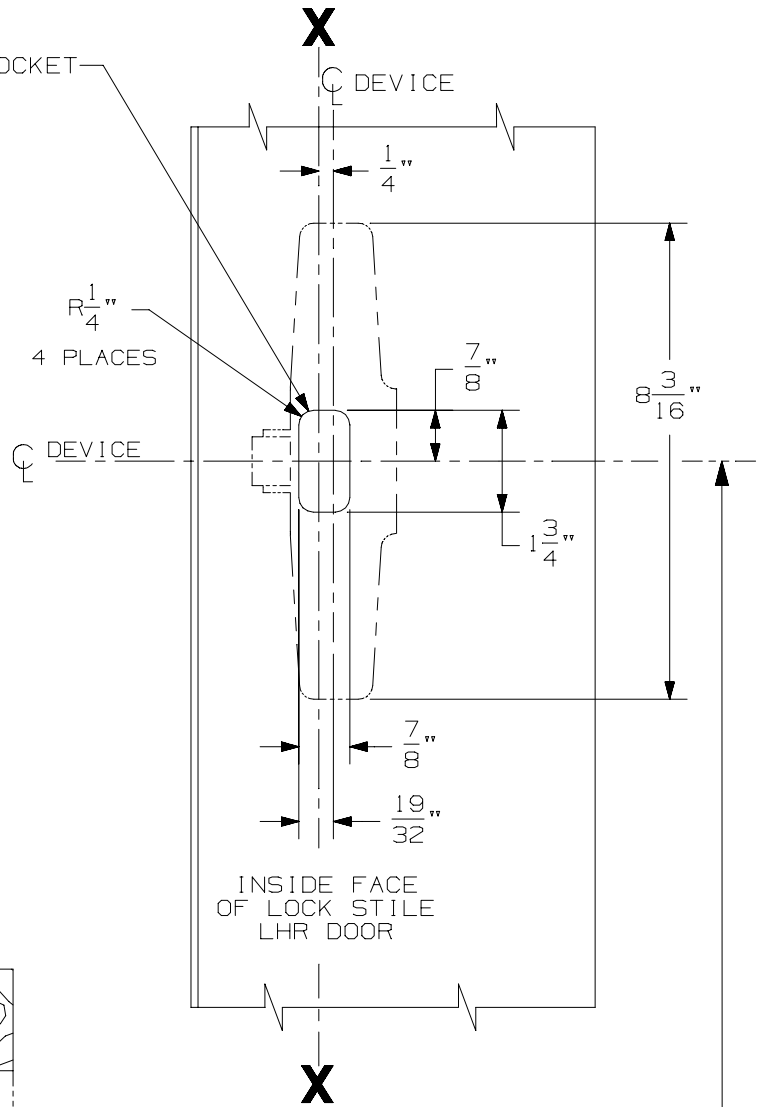


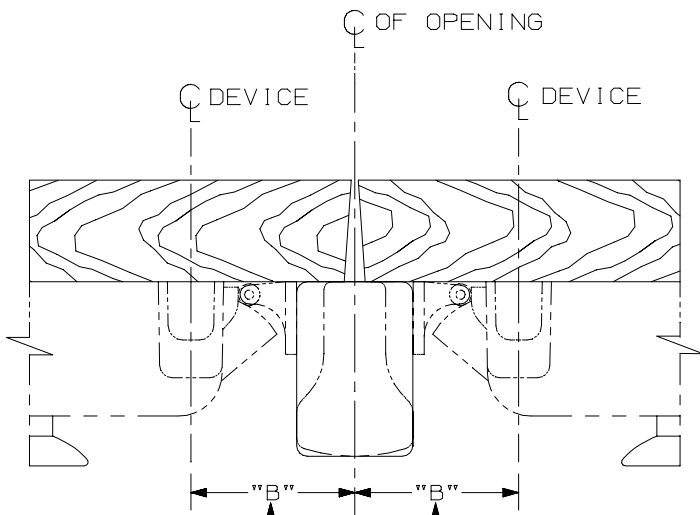
5/8" DEEP POCKET

SINGLE DOOR INSTALLATION		
STRIKE	DIMENSION "B"	RECOMMENDED MIN. STILE*
299	1 21/32"	2 7/8"
1439	27/32"	2"
1410	27/32"	2"

USE OF OUTSIDE TRIM MAY ALTER MINIMUM STILE REQUIREMENT. SEE TRIM TEMPLATE.



INSIDE FACE OF LOCK STILE LHR DOOR



DOUBLE DOOR INSTALLATION WITH VON DUPRIN MULLIONS			
MULLION	STRIKE	DIMENSION "B"	RECOMMENDED MIN. STILE*
4954	299	2 21/32"	3 3/8"
1654	1606	2 7/32"	2 15/16"
5654	299	2 3/16"	2 15/16"
5754	1408	1 3/8"	2"

USE OF OUTSIDE TRIM MAY ALTER MINIMUM STILE REQUIREMENT. SEE TRIM TEMPLATE.

FOR OUTSIDE TRIM PREPARATION, WHEN REQUIRED, SEE ADDITIONAL TRIM TEMPLATE.

SINGLE DOOR OPENING
39 13/16" TO FINISHED FLOOR.

DOUBLE DOOR OPENING
WITH VON DUPRIN MULLION
39 11/16" TO FINISHED FLOOR

LHR SHOWN
RHR OPPOSITE

GLASS BEAD KIT AVAILABLE WHEN REQUIRED.

① * CONSULT FACTORY FOR STILE WIDTHS LESS THAN MIN. RECOMMENDED TO ENSURE PROPER APPLICATION

NOTE: MOUNTING HOLES TO BE PREPARED AT INSTALLATION ON DOOR.

33A/35A Series Rim Devices (Wood Door)

VON DUPRIN®

NOTES: SEE MASTER SHEET #10001 FOR SUGGESTED REINFORCING

TEMPLATE NUMBER:

W10048_a

DATE:
05-28-13