

NOTES: SEE MASTER SHEET #10001 FOR SUGGESTED REINFORCING

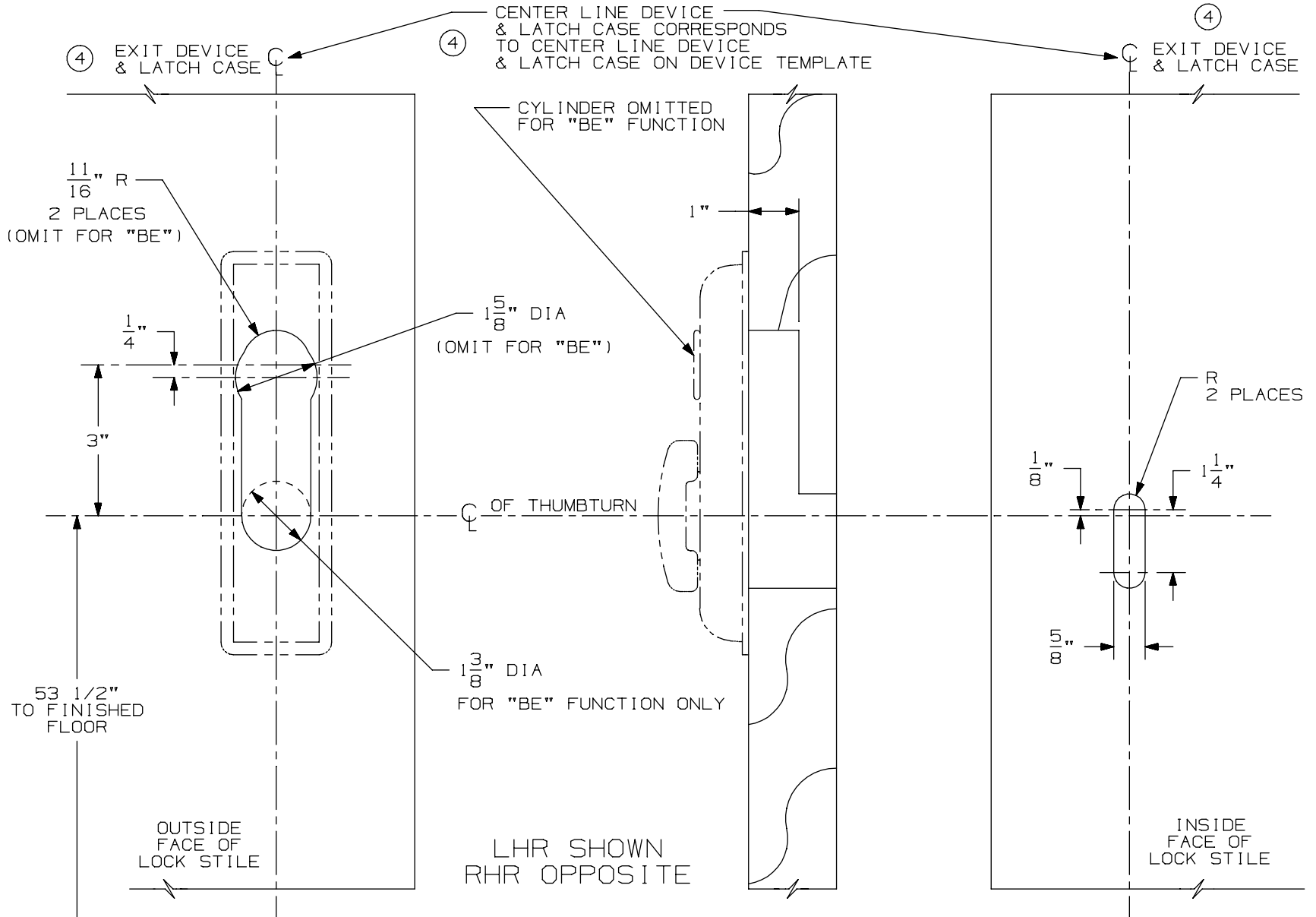
374-T & 374-T-BE Control
(Wood Door)

TEMPLATE NUMBER:

W40146_a

DATE:
05-29-13

VON DUPRIN®



DEVICE APPLICATION SCHEDULE
3327/3527 VERTICAL ROD DEVICE
9827/9927 SERIES VERT. DEVICE
2227 SERIES VERTICAL ROD DEVICE
④ 3327A/3527A VERTICAL ROD DEVICE

NOTE: MOUNTING HOLES TO BE PREPARED AT INSTALLATION ON DOOR.

FOR CUTOUTS ON INSIDE FACE OF DOOR SEE DEVICE TEMPLATE.