

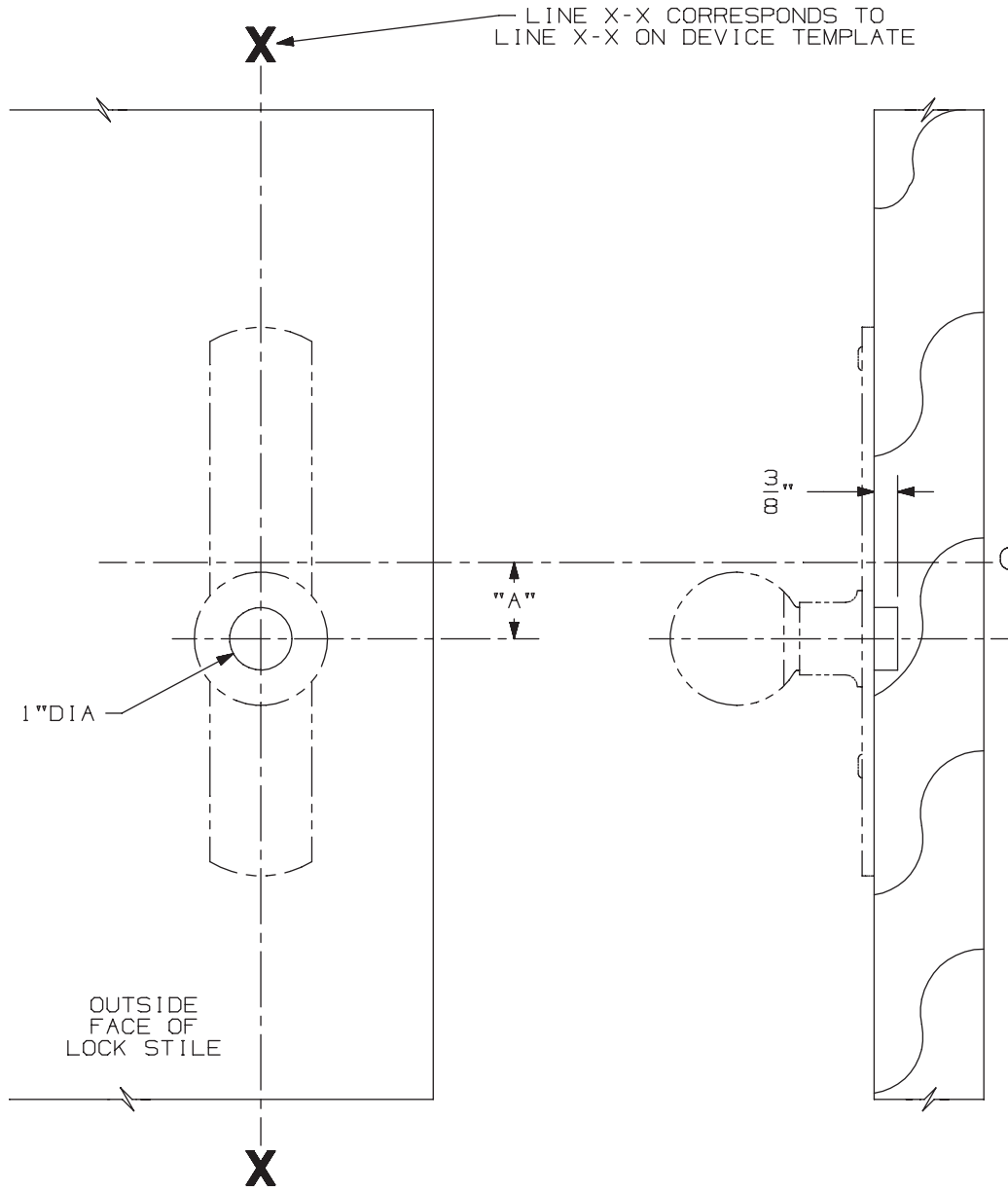
NOTES: SEE MASTER SHEET #10001 FOR SUGGESTED REINFORCING

606K-DT Trim (Wood Door)

TEMPLATE NUMBER: W20059\_a

DATE: 05-29-13

**VON DUPRIN®**



LINE X-X CORRESPONDS TO LINE X-X ON DEVICE TEMPLATE

1" DIA

"A"

3/16"

CORRESPONDS TO CENTER  
LINE OF DEVICE ON  
DEVICE TEMPLATE

OUTSIDE  
FACE OF  
LOCK STILE

LHR SHOWN  
RHR OPPOSITE

DEVICE APPLICATION SCHEDULE	
DEVICE	DIM. "A"
44 RIM	3"
88 RIM	3"
88 MORT.	1 1/4"
88 VERT.	1 1/4"

②

NOTE: MOUNTING HOLES TO BE PREPARED AT INSTALLATION ON DOOR.

FOR CUTOUTS ON INSIDE FACE OF DOOR SEE DEVICE TEMPLATE.