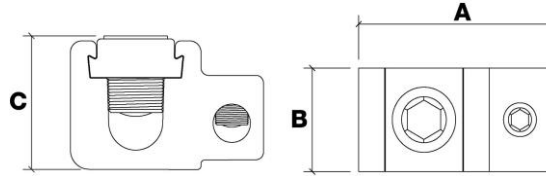




Morris CAT#: 91012-91023  
 Aluminum Parallel & Tee Tap Connectors



**Features:**

- Dual Rated for Both Copper and Aluminum Conductors and Electro Tin Plated to Provide Low Contact Resistance and Protection Against Corrosion
- Manufactured from High Strength 6061-T6 Aluminum Alloy to Ensure Both Maximum Strength and Conductivity
- Dual Entry Wire Holes Allow for Parallel or Tee Tap Connectors
- Assembly Can be Made With Only a Screwdriver or Allen Wrench
- Re-Usable
- Rated 90°C
- 600 Volt

DIMENSIONS = INCHES

CAT. NO.	AWG	MAIN WIRE	TAP WIRE	A	B	C	BOX QTY
91012	2	2-12	4-14	1.39	0.63	0.88	50
91014	1/0	1/0-2	1/0-14	1.75	0.75	1.00	25
91016	250-1/0	250-1/0	1/0-14	2.25	1.00	1.31	25
91018	250	250-1/0	250-6	2.00	1.00	1.31	12
91020	350	350-4/0	350-6	2.56	1.25	1.44	12
91022	500	500-350	500-2	3.13	1.38	1.75	12
91023	750	750-500	500-2	3.38	1.50	2.00	6



Morris CAT#: 91112-91122  
Aluminum Parallel & Tee Tap Covers



**Features:**

- Flexible Covers Allow for Either Parallel or 'T' Tap Wire Entry
- Secure Snap Eliminates the Need for Taping
- Rated 90°C; 600 Volt

DIMENSIONS = INCHES

<b>CAT. NO.</b>	<b>AWG</b>	<b>COVER COLOR</b>	<b>L</b>	<b>W</b>	<b>H</b>	<b>BOX QTY</b>
91112	2	YELLOW	2-7/32	1-9/32	1-7/64	12
91114	1/0	GRAY	2-5/8	2-5/32	1-1/4	12
91116	250	RED	3-7/16	2-7/8	1-5/8	12
91118	350	YELLOW	3-3/4	3-3/16	1-3/4	12
91120	500	BLUE	4-3/8	3-5/16	2-3/32	12
91122	750	ORANGE	4-5/8	3-7/16	2-11/32	12



Morris CAT#: 91012-91122  
Aluminum Parallel & Tee Tap Connectors/Covers

## Torque Chart

Tightening Torque Slotted Screws (in-lbs.)

Per UL486A/B Table 23

<b>Wire Size</b>	<b>Torque</b>
<b>#2-2/0</b>	50
<b>#4-#6</b>	45
<b>#8</b>	40
<b>#10-#14</b>	35

## Torque Chart

Tightening Torque Internal Hex Screws (in-lbs.)

Per UL486A/B Table 23

<b>Connector Size</b>	<b>Torque</b>
<b>1000</b>	600
<b>750-800</b>	500
<b>500-600</b>	375
<b>250-350</b>	275
<b>1/0-2/0</b>	120