



ALLEGION



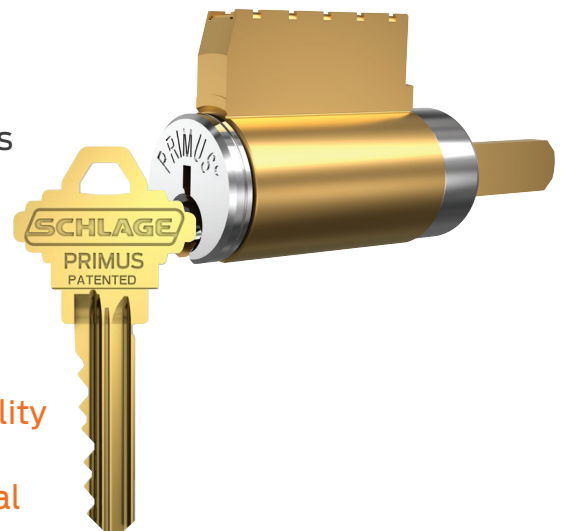
Primus® RP

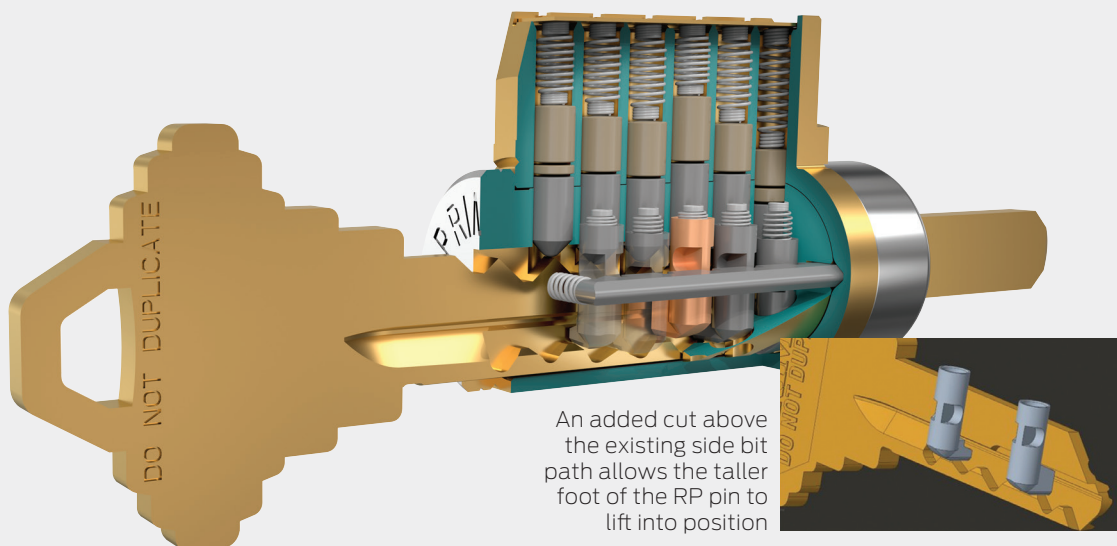
Providing patent protection
on Classic Obverse keyways
beyond 2024

Introducing the Primus RP solution. Elegant in its simplicity, with just a few parts Primus RP allows your customers to update existing Primus cylinders and gain five additional years of patent protection (to 2029).

- ✓ Applicable to the Classic Obverse key family
- ✓ Just two new components: the Primus RP keys and finger pin (in seven designs)
- ✓ Current FSIC Primus cores are compatible, conventional plugs may need update

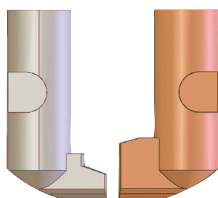
Primus RP offers seamless backward compatibility to an existing Primus system in Classic Obverse and is recommended for all perimeter and critical points of entry where higher security is essential.





RP = Raised Pin

The RP pin is a simple patent concept requiring only a few new parts. It was first patented in 2009 but not put into production until now. This new, copper-colored RP pin has a taller, “raised” foot that rides up into an added side bit path on the key and blocks the use of older keys. With it, customers have a low-cost path to upgrade a legacy Primus system to regain patent protection or add to an existing Primus XP system in a Classic Obverse keyway to provide protection another 5 years.



Part needs are few

New/changed parts	Part numbers	Detail
New RP finger pins	34-223 thru 34-229	Numbers 1 thru 7 finger pins
New Primus RP key blanks	35-157-RP standard	Keys feature ample space on back for custom stamping and are easily identified by the added side bit cut
	35-171-RP LP section	
	35-158-RP control	
	35-172-RP LP section control	
	35-159-RP lockout	
Revised conventional Primus plug	33-136.(finish).(keyway)	A modest change to the 3rd finger pin hole in these parts makes them universal in application to Primus legacy, XP and RP for Classic Obverse keyways.
Revised conventional Primus sub-assembled cylinder	20-200.(finish).(keyway)	
Revised conventional Primus UL 437 subassembled cylinder	20-208.(finish).(keyway)	
Also mortise and rim subassemblies	20-201, 20-209, 20-202, and 20-210	

Revised plugs and cylinders are easy to recognize by the added dot after the Primus name on the face of the cylinder.



Complete cylinders with keys are predominantly factory assembled, keyed and shipped direct to end user. All other component parts are shared with legacy Primus and Primus XP cylinders.

About Allegion

Allegion (NYSE: ALLE) is a global pioneer in seamless access, with leading brands like CISA®, Interflex®, LCN®, Schlage®, SimonsVoss® and Von Duprin®. Focusing on security around the door and adjacent areas, Allegion secures people and assets with a range of solutions for homes, businesses, schools and institutions. Allegion had \$2.7 billion in revenue in 2020, and its security products are sold around the world. For more, visit www.allegion.com