



Touchscreen Deadbolt

Keyless. And More.

- ANSI Grade 1 Security - highest ranking - provides maximum level of security
- Durable resistive touchscreen ensures wear pattern remains undetectable
- Motorized bolt automatically locks and unlocks when code is entered
- Warning beep alerts you when the deadbolt is not fully extended
- Anti-pick shield protects against lock tampering
- Auto-lock feature automatically relocks door anytime it's left unlocked
- Built-in Alarm Technology with Activity, Tamper and Forced Entry alerts
- Designed for strength and durability, tested beyond 250,000 uses
- 1 year battery life
- No wiring or programming required
- Preset with 2 user codes
- Guaranteed to fit existing standard pre-drilled doors
- Connects with Nexia™ Home Intelligence



Schlage BE469NX Deadbolt Specifications

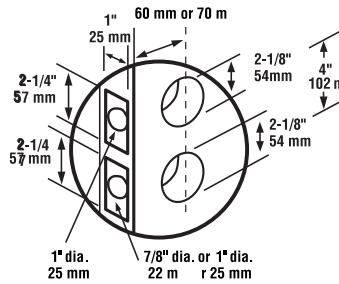
CERTIFICATION	ANSI/BHMA Grade 1
PRODUCT DIMENSIONS	(w x h x d) exterior: 3" x 4 3/4" x 1", interior: 3" x 8" x 2"
WEIGHT	3.6 lbs
WARRANTY	1 year electronics, limited lifetime mechanical and finish
BATTERY	Powered by 4 AA batteries
LATCH THROW	1"
CYLINDER	5-pin tumbler, C Keyway
DOOR THICKNESS	1 3/8" to 1 3/4"; thick door kit extends 1 7/8" to 2 1/2"
CROSS BORE	4" center-to-center distance needed between cross bore holes*
EDGE BORE	1"
LATCH/BACKSET	Universal latch fits 2 3/8" or 2 3/4" backset
LATCH FACEPLATE SIZE	1" x 2 1/4"
LATCH FACEPLATE OPTIONS	Round corner, square corner and drive-in
STRIKE	1 1/8" x 2 3/4" round corners, strike reinforcer
KEYS	1 key included
CODES	Pre-set, unique six-digit programming code, 2 pre-set unique 4-digit user codes, storage of up to 30 user codes (4-8 digits)
COMMUNICATIONS	900 Mhz (Z-Wave® RF)**
OPERATING TEMPERATURES	Outside lock body (exterior mounted): -35C to 66C Inside lock body (interior mounted): -10C to 49C



BE469NX CAM



BE469NX CEN



The BE469NX can also be mounted on doors with a 1.5" (38 mm) bore hole diameter.



* May require greater than 4" center-to-center bore adjustment if used with non-standard decorative rose install.

** Z-Wave is a registered trademark of Zensys Inc. and/or its subsidiaries.

Visit: schlage.com for more information.

Available Finishes



505/605
Bright Brass



619
Satin Nickel



625
Bright Chrome



626
Satin Chrome



716
Aged Bronze

BE Series	505/605	609	613	619	620	625	626	716
BE469NX Camelot	•			•				•
BE469NX Century				•		•	•	

