



MARKS USA

I-QWIK LITE STAND ALONE ELECTRONIC ACCESS CONTROL



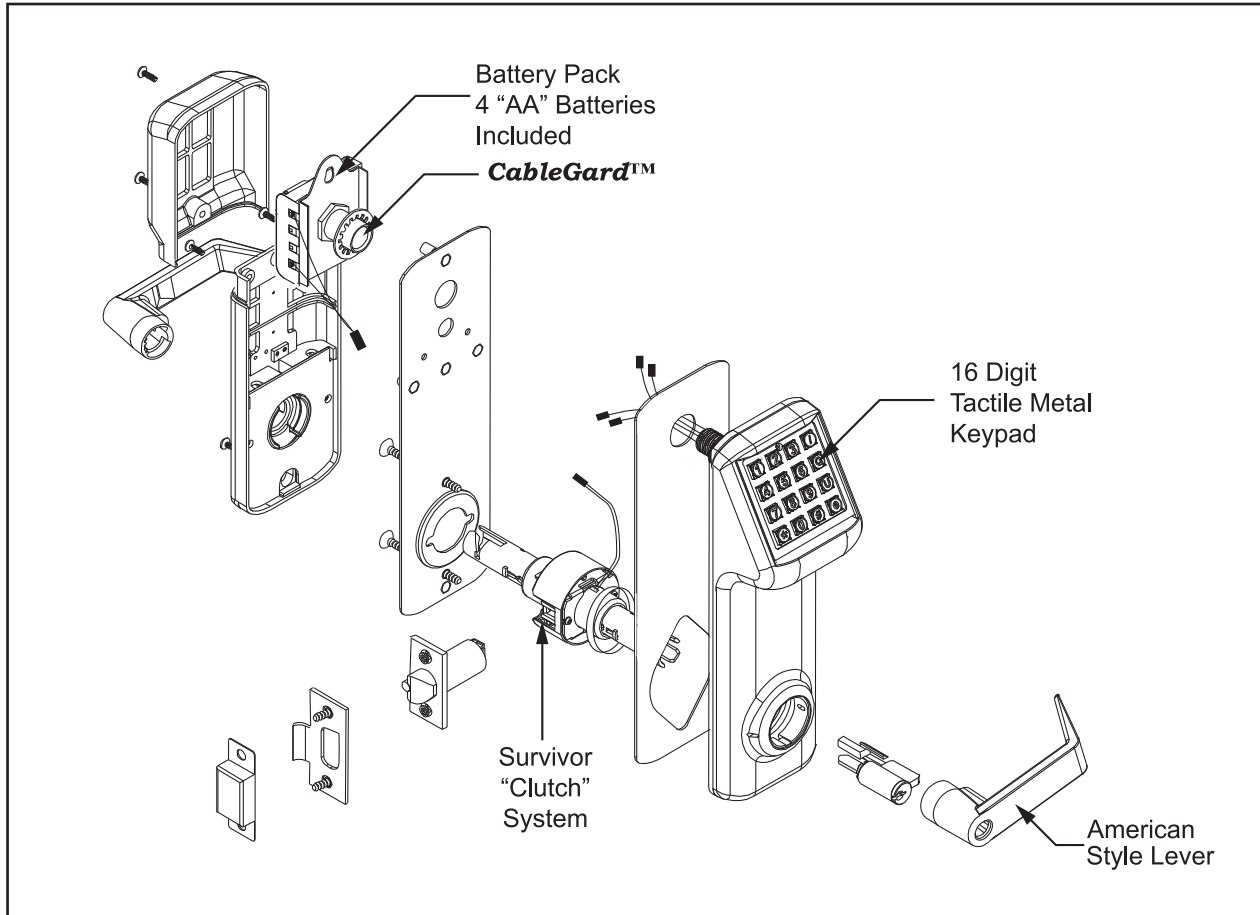
IQ1LITE
Cylindrical
Model Shown



STANDARD FEATURES:

- **CableGard™** protects wires for easy installation
- Standard ANSI door prep with one additional hole
- Pre-programmed code
- Keypad programmable
- 160 User codes
- Temporary user codes
- Passage mode
- Pin only mode
- Double code entry for maximum security
- Two wire remote release
- 16 Digit tactile metal keypad
- Durable black powder coat finish w/26D American levers
- Weatherproof standard
- Audible & visible entry indicator
- Audible low battery alert
- 4 "AA" batteries; 100,000 operations
- Easy installation
- Lifetime Mechanical Warranty;
2 Year Electronic Warranty

I-QWIK LITE STAND ALONE ELECTRONIC ACCESS CONTROL



Lockset Specifications

IQ1 LITE Cylindrical Lockset

Door Thickness: 1-3/4" standard;
For thicker doors, Consult factory

Handing: Non-handed

Key Override: Marks "C" keyway, 6 pin w/2 keys, IC Core optional

Lock Body: Cylindrical "Survivor" featuring the "Clutch" for trouble free service

Latch: Grade 2, 2-3/4" backset, 1/2" throw, 3 Hour UL fire rating

Clutch: The "Clutch" for trouble free service

Strike Plate: 4-7/8" ASA strike

IQ2 LITE Mortise Lockset

Door Thickness: 1-3/4" standard;
For thicker doors, Consult factory

Handing: Field reversible

Key Override: 1-1/8" Mortise cylinder, 6 pin w/2 keys

Lock Body: Grade 1, Series 5, 2-3/4" backset, 3/4" anti-friction latch, 3 Hr UL fire rating

Auxiliary Latch: 1/2" throw

Bolt Throw: 1" (Optional deadbolt functions - Consult factory)

Clutch: The "Clutch" for trouble free service

Strike Plate: 4-7/8" ASA standard

IQ7LITE Rim Exit Device Interface

Door Thickness: 1-3/4" standard;
For thicker doors, Consult factory

Handing: Non-handed

Key Override: 1-1/8" Mortise cylinder, 6 pin w/2 keys

Clutch: The "Clutch" for trouble free service

Adapter plates operate most manufacturers Rim Exit Devices. Adapter plates for Mounting Exit Devices are sold separately.

Distributed By:

FINISH GROUPS *

19 Black Powder Coat	26D Satin Chrome
-------------------------	---------------------

For Additional Finishes, Consult Factory.



**CRAFTED WITH PRIDE
IN THE USA**