



**AMERICAN SPECIALTIES, INC.**

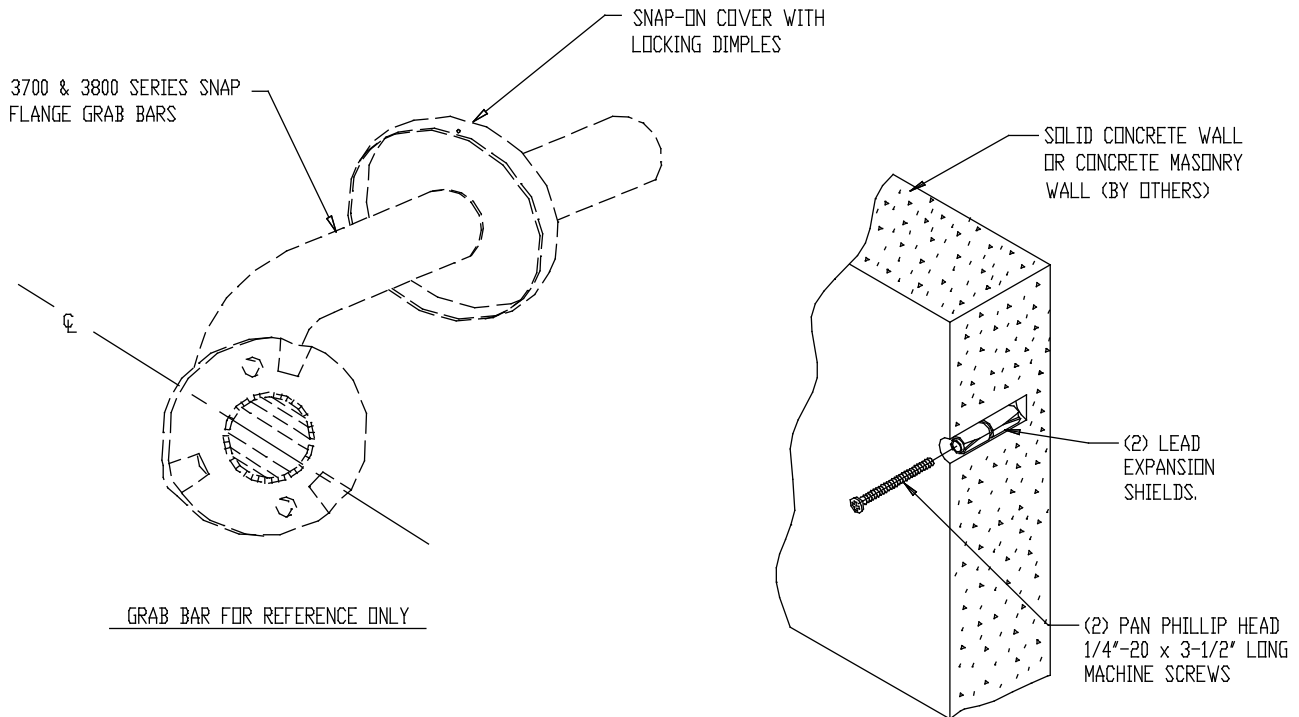
441 Saw Mill River Road, Yonkers, NY 10701 (914) 476-9000

MODEL No: 3930

ISSUED: 1-87

REVISED: 5-99

### WALL ANCHOR



#### **SPECIFICATION**

Wall Anchor shall be suitable for surface mounting to finished solid concrete wall of all grab bars with snap flange mounting (e.g. ASI series 3700 and 3800 grab bars). Wall anchor shall be 1/4 -20 x 2" long machine screws with matching lead expansion-shields. Anchor kit shall contain (2) machine screws with matching lead expansion shields. Specify one (1) kit **per flange**.

**Wall Anchor shall be Model N° 3930, of American Specialties, Inc., 441 Saw Mill River Road, Yonkers, New York 10701-4913**

#### **INSTALLATION**

For compliance with ADA Accessibility Guidelines mount grab bar so that horizontal centerline is 33" (838mm) minimum to 36" (914mm) maximum above finished floor. Locate grab bar in exact mounting position on wall and mark mounting holes through flanges onto wall. Drill holes to accept expansion shield 2" deep. Install expansion shields. Insert bolt through flange of grab bar and screw into expansion-shield until flange is tight against wall. Slide loose cover over mounting flange and snap tight.

**Accessory Specialties**

**AMERICAN DISPENSER**

**Desert Ray Products**

**WATROUS INC.**