

CORBIN-RUSSWIN CLOSER X ABH HOLDER COMPATIBILITY CHART



BASED ON 36" DOORS, 90 DEG. OPENING, BUTT HINGES

CORBIN-RUSSWIN CLOSER	CONCEALED			SURFACE				
	1000 1000 ADJ	1000SL 1000SA	4000	4400	7000	8000 & HD8000	9000	9000A
DC6200/DC6400 (Reg. Arm)	No	No	Yes	Yes	Yes/2,3	Yes	Yes	Yes
DC6200/DC6400 (Reg. Arm) x 294F40	Yes/4	Yes	Yes	Yes	Yes/3	Yes/2	Yes/2	Yes/2
DC6210/DC6410 (Par.Arm)	Yes	Yes	Yes	No	No	No	No	No
DC6210/DC6410 (Par.Arm) x A13	Yes	Yes	Yes	Yes/1	Yes	No	No	No
DC6210/DC6420 (Par.Arm) x M83	Yes	Yes	Yes	Yes/1	Yes	No	No	No
DC6220-DC6420 (Top Jamb)	No	Yes	Yes	No	No	No	No	No
DC6220/DC6420 (Top Jamb) x Drop Plate	Yes	Yes	Yes	Yes	No	Yes	Yes	Yes

DC3200 (Reg. Arm)	No	No	Yes	Yes	Yes/2,3	Yes	Yes	Yes
DC3210 (Par. Arm)	Yes	Yes	Yes	No	No	No	No	No
DC3210 (Par. Arm) x M83	Yes	Yes	Yes	Yes/1	Yes	Yes	Yes/1	Yes/1
DC3220 (Top Jamb)	No	Yes	Yes	No	No	No	No	No
DC3220 (Top Jamb) x Drop Plate	Yes	Yes	Yes	Yes	No	Yes	Yes	Yes

DC8200 (Reg. Arm)	No	Yes	Yes	Yes	Yes/2,3	Yes/2	Yes	Yes
DC8200 (Reg. Arm) x 754F24 Plate	Yes	Yes	Yes	Yes	Yes/3	Yes/2	Yes/2	Yes/2
DC8210 (Par. Arm)	Yes	Yes	Yes	No	No	No	No	No
DC8210 (Par. Arm) x A13	Yes	Yes	Yes	Yes/1	No	No	Yes/1	No
DC8210 (Par. Arm) x M83	Yes	Yes	Yes	Yes/1	No	No	Yes/1	No
DC8220 (Top Jamb)	No	Yes	Yes	No	No	No	No	No
DC8220 (Top Jamb) x Drop Plate	Yes	Yes	Yes	Yes	No	Yes	Yes	Yes

- 1- Minimum 2-7/16" stop width required to install closer bracket and overhead holder bracket in same location
- 2- For interference with Holder SNB and Closers or Back Plates, see ABH Template T-CC
- 3-For 7000 Series, door portion must be mounted with SNB.
- 4- Back plate inverted

FOR SOME PARALLEL ARM INSTALLATIONS "NO" IS LISTED BECAUSE THE LOCATION OF THE OVERHEAD HOLDER/STOP BRACKET WILL INTERFERE WITH THE PA BRACKET

DORMA CLOSER X ABH HOLDER COMPATIBILITY CHART



BASED ON 36" DOORS, 90 DEG. OPENING, BUTT HINGES

DORMA CLOSER	CONCEALED			SURFACE				
	1000 1000ADJ	1000SL 1000SA	4000	4400	7000	8000 & HD8000	9000	9000A
8900x AF90 (Reg. Arm)	No	No	No	Yes/2	Yes/2,3	Yes/2	Yes/2	Yes/2
8900 x AF90 (Reg. Arm) x BP89	No	No	Yes	Yes/2	Yes/2,3	Yes/2	Yes/2	Yes/2
8900 x AF89P (Par. Arm)	Yes	Yes	Yes	No	No	No	No	No
8900 x PDx AF89 (Par. Arm)	Yes	Yes	Yes	Yes/1	Yes	No	No	No
8900 x AF89J (Top Jamb)	No	Yes	Yes	Yes	No	No	No	No
8900 x BP89 Drop Plate (Top Jamb)	Yes	Yes	Yes	Yes	No	No	No	No
<hr/>								
8600 x AF86 (Reg. Arm)	No	Yes	No	Yes/2	Yes/2	Yes/2	Yes/2	Yes
8600 x AF86 (Reg. Arm) x BP86	No	No	Yes	Yes/2	Yes/2,3	Yes/2	Yes/2	Yes
8600 x AF86P (Par. Arm)	Yes	Yes	Yes	No	No	No	No	No
8600 x PD (Par. Arm)	Yes	Yes	Yes	Yes/1	No	No	No	No
8600 x AF86J (Top Jamb)	No	Yes	Yes	Yes	No	No	No	No
8600 x DP86 Drop Plate (Top Jamb)	Yes	Yes	Yes	Yes	No	Yes	Yes	Yes
<hr/>								
7400 x AR (Reg. Arm)	No	Yes	No	Yes/2	Yes/2	Yes/2	Yes/2	Yes
7400 x AR (Reg. Arm) x BP74	No	No	Yes	Yes/2	Yes/2,3	Yes/2	Yes/2	Yes
7400 x ARP (Par. Arm)	Yes	Yes	Yes	No	No	No	No	No
7400 x PD (Par. Arm)	Yes	Yes	Yes	Yes/1	Yes	Yes	No	No
7400 x ARJ (Top Jamb)	No	Yes	Yes	Yes	No	No	No	No
7400 x DP74 Drop Plate (Top Jamb)	Yes	Yes	Yes	Yes	No	Yes	Yes	Yes
<hr/>								
7300 x AR (Reg. Arm)	No	Yes	Yes	Yes/2	Yes/2,3	Yes	Yes	Yes
7300 x AR (Reg. Arm) x BP73	No	Yes	Yes	Yes/2	No	Yes/2	Yes/2	Yes/2
7300 x ARP (Par. Arm)	Yes	Yes	Yes	No	No	No	No	No
7300 x PD (Par. Arm)	Yes	Yes	Yes	Yes/1	Yes	Yes	No	No
7300 x ARJ (Top Jamb)	No	Yes	Yes	No	No	No	No	No
7300 x DP73 Drop Plate (Top Jamb)	Yes	Yes	Yes	Yes	No	Yes	No	No

1- Minimum 2-7/16" stop width required to install closer bracket and overhead holder bracket in same location

2- For interference with Holder SNB and Closers or Back Plates, see ABH Template T-CC

3- For 7000 Series, door portion must be mounted with SNB.

4- Back Plate Inverted

FOR SOME PARALLEL ARM INSTALLATIONS "NO" IS LISTED BECAUSE THE LOCATION OF THE OVERHEAD HOLDER/STOP BRACKET WILL INTERFERE WITH THE PA BRACKET

LCN CLOSER X ABH HOLDER COMPATIBILITY CHART



BASED ON 36" DOORS, 90 DEG. OPENING, BUTT HINGES

LCN CLOSER	CONCEALED			SURFACE				
	1000 1000ADJ	1000SL 1000SA	4000	4400	7000	8000 & HD8000	9000	9000A
4040 (Reg. Arm)	No	No	Yes	Yes	Yes/2,3	Yes	Yes	Yes
4040 (Reg. Arm) x 4040-18	Yes/4	Yes/4	Yes	Yes	Yes/2,3	Yes	Yes	Yes
4040P (Par. Arm)	Yes	Yes	Yes	No	No	No	No	No
4040P (Par. Arm) x 62A	Yes	Yes	Yes	Yes/1	Yes	No	Yes/1	Yes/1
4040TJ (Top Jamb)	No	No	Yes	Yes	No	No	No	No
4040TJ (Top Jamb) x 4040-18G	Yes	Yes	Yes	Yes	Yes	No	No	No
4010 (Reg. Arm)	No	Yes/1000SL	Yes	Yes	Yes/2,3	Yes/2	Yes/2	Yes
4010 (Reg. Arm) x 4020-18	Yes/4	No	Yes	Yes	Yes/3	Yes	Yes	Yes
4110 (Par. Arm)	Yes	Yes	Yes	No	No	No	No	No
4110 (Par. Arm) x 62G	Yes	Yes	Yes	No	No	No	No	No
4020 (Top Jamb)	No	Yes	Yes	No	No	No	No	No
4020 (Top Jamb) x 4020-18G	Yes	Yes	Yes	Yes	No	No	No	No
1461R (Reg. Arm)	No	No	Yes	Yes/2	Yes/2,3	Yes/2	Yes/2	Yes
1461R (Reg. Arm) X 1461-18	Yes/4	Yes/4	Yes/4	Yes	Yes/3	Yes	Yes/2	Yes
1461P (Par. Arm)	Yes	Yes	Yes	No	No	No	No	No
1461P (Par. Arm) x 62A	Yes	Yes	Yes	Yes/1	No	No	Yes/1	Yes/1
1461TJ (Top Jamb)	No	Yes	Yes	No	No	No	No	No
1461TJ (Top Jamb) x 1461-18	Yes	Yes	Yes	Yes	Yes	No	No	No
1261R (Reg. Arm)	No	Yes	No	Yes/2	Yes/2,3	Yes/2	Yes/2	Yes
1261R (Reg. Arm) x 1260-18	Yes/4	Yes/4	Yes/4	Yes	Yes/3	Yes/2	Yes	Yes
1261P (Par. Arm)	Yes	Yes	Yes	No	No	No	No	No
1261P (Par Arm) x 62A	Yes	Yes	Yes	Yes/1	No	No	Yes/1	Yes/1
1261TJ (Top Jamb)	No	Yes	Yes	No	No	No	No	No
1261TJ (Top Jamb) x 1261-18	Yes	Yes	Yes	Yes	No	No	No	No

1- For Stop widths up to and including 3-1/4" wide, 62A and 62G shoes are always mounted in the rabbet opposite the door.

2- For interference with Holder SNB and Closers or Back Plates, see ABH Template T-CC

3- 7000 Series door portion must be mounted with SNB.

4- Back plate inverted

FOR SOME PARALLEL ARM INSTALLATIONS "NO" IS LISTED BECAUSE THE LOCATION OF THE OVERHEAD HOLDER/STOP BRACKET WILL INTERFERE WITH THE PA BRACKET

LCN CLOSER X ABH HOLDER COMPATIBILITY CHART



BASED ON 36" DOORS, 90 DEG. OPENING, BUTT HINGES

LCN CLOSER	CONCEALED			SURFACE				
	1000 1000ADJ	1000SL 1000SA	4000	4400	7000	8000 & HD8000	9000	9000A
4031 (Reg. Arm)	No	No	Yes	Yes	Yes/2,3	Yes	Yes/2	Yes/2
4030P (Par. Arm)	Yes	Yes	Yes	No	No	No	No	No
4030P (Par. Arm) x 62A	Yes	Yes	Yes	Yes/1	Yes	Yes	Yes/1	Yes/1
4030TJ (Top Jamb)	Yes	Yes	Yes	Yes	Yes	Yes	No	No
4030TJ (Top Jamb) x 4030-TJ	Yes	Yes	Yes	Yes	No	No	No	No
4210 (Par. Arm)	Yes	Yes	Yes	No	No	No	No	No
4210 (Par. Arm) x 4110-18	Yes/4	Yes	Yes	No	No	No	No	No
4510 (Reg. Arm)	No	No	Yes	Yes**	Yes**/***	Yes	Yes**	Yes**
4510 (Reg. Arm) x 4010-18	Yrs/4	Yes/4	Yes/4	Yes**	Yes***	Yes**	Yes**	Yes**

1- For Stop widths up to and including 3-1/4" wide, 62A and 62G shoes are always mounted in the rabbet opposite the door.

2- For interference with Holder SNB and Closers or Back Plates, see ABH Template T-CC

3- 7000 Series door portion must be mounted with SNB.

4- Back plate inverted

FOR SOME PARALLEL ARM INSTALLATIONS "NO" IS LISTED BECAUSE THE LOCATION OF THE OVERHEAD HOLDER/STOP BRACKET WILL INTERFERE WITH THE PA BRACKET

Rev 5/15

NORTON/YALE CLOSER X ABH HOLDER COMPATIBILITY CHART



BASED ON 36" DOORS, 90 DEG. OPENING, BUTT HINGES

NORTON-YALE CLOSER	CONCEALED			SURFACE				
	1000 1000ADJ	1000SL 1000SA	4000	4400	7000	8000 & HD8000	9000	9000A
7500/4400 (Reg. Arm)	No	No	No	Yes/3	Yes/3.5	Yes/3	Yes/3	Yes/3
7500/4400 (Reg Arm x 7786HO Plate)	Yes/3,4	Yes/3,4	Yes/3,4	Yes/3.4	Yes/3.4,5	Yes/3,4	Yes/3,4	Yes/3,4
P7500/P4400 (Par. Arm)	Yes	Yes	Yes	No	No	No	No	No
P7500/P4400 x 2018S/290 (Par. Arm)	Yes	Yes	Yes	Yes/2	Yes/2	Yes/2	Yes/2	No
J7500/TJ4400 (Top Jamb)	Yes	Yes	Yes	No	No	No	No	No
J7500/TJ4400 x 7787/487 Drop Plate (Top Jamb)	Yes	Yes	Yes	Yes	No	Yes	Yes	Yes
<hr/>								
7700/400 (Reg. Arm)	No	No	No	Yes	Yes/3,5	Yes/3	Yes/3	Yes/3
7700/400 (Reg Arm x 7786HO Plate)	Yes/3,4	Yes/4	Yes/4	Yes/4	Yes/3,4,5	Yes//3.4	Yes/1,3,4	Yes/3
R7700/P400 (Par. Arm)	Yes	Yes	Yes	No	No	No	No	No
P7700/P400 x 2018S-290 (Par. Arm)	Yes	Yes	Yes	Yes/2	Yes/2	Yes/2	Yes/2	No
J7700/TJ400 (Top Jamb)	Yes	Yes	Yes	No	No	No	No	No
J7700/TJ400 x 7787/487 Drop Plate (Top Jamb)	Yes	Yes	Yes	Yes	No	Yes	Yes	Yes
<hr/>								
8000/3000 (Reg. Arm)	No	No	No	Yes/3	Yes/3,5	Yes/3	Yes/3	Yes/3
8000/3000 (Reg. Arm x 8146 Plate)	Yes/3	Yes/3	Yes	Yes/4	Yes/3,4,5	Yes/3,4	Yes/1,3,4	Yes/1,3,4
P8000/P3000 (Par. Arm)	Yes	Yes	Yes	No	No	No	No	No
P8000/P3000 x 2018S/290 (Par. Arm)	Yes	Yes	Yes	Yes/2	Yes/2	Yes/2	Yes/2	No
J8000/J3000 (Top Jamb)	Yes	Yes	Yes	No	No	No	No	No
J8000/J3000 x 8146/3146 Drop Plate (Top Jamb)	Yes	Yes	Yes	Yes	Yes	Yes	Yes	Yes
<hr/>								
1600/50BC (Reg. Arm)	No	No	No	Yes/3	Yes/3,5	Yes/3	Yes	Yes
P1600/P50BC (Par. Arm)	Yes	Yes	Yes	No	No	No	No	Yes/1,3,4
P1600/P50BC x 2018S/290 (Par. Arm)	Yes	Yes	Yes	Yes/2	Yes/2	No	Yes	No
J1600/TJ50BC (Top Jamb)	No	Yes	No	No	No	No	No	No
J1600/TJ50BC x 1688/214 Drop Plate (Top Jamb)	Yes	Yes	Yes	Yes	No	Yes	Yes	Yes

FOR SOME PARALLEL ARM INSTALLATIONS "NO" IS LISTED BECAUSE THE LOCATION OF THE OVERHEAD HOLDER/STOP BRACKET WILL INTERFERE WITH THE PA BRACKET

- 1- Do not use SNB to mount back plates
- 2- Minimum 2-7/16" stop width required to install closer bracket and overhead holder bracket in same location
- 3- For interference with Holder SNB and Closers/Back Plates, see ABH Template T-CC
- 4- Back plate inverted
- 5- For 7000 use SNB only

NORTON/YALE CLOSER X ABH HOLDER COMPATIBILITY CHART



BASED ON 36" DOORS, 90 DEG. OPENING, BUTT HINGES

NORTON	CONCEALED			SURFACE				
	1000 1000ADJ	1000SL 1000SA	4000	4400	7000	8000 & HD8000	9000	9000A
1700 (Reg Arm)	No	No	No	Yes/3	Yes 3/5	Yes/3	Yes/3	Yes
1700 (Par. Arm)	Yes	Yes	Yes	No	No	No	No	No
1700 (Par Arm) x 1748 Drop Plate	Yes/4	Yes/4	Yes	No	No	No	No	No
1700 (Top Jamb)	No	No	Yes	No	No	No	No	No
1700 (Top Jamb) x 1746 Drop Plate	Yes	Yes	Yes	No	No	No	No	No
<hr/>								
9300BC (Reg Arm)	No	No	Yes	Yes/3	Yes/3	Yes/3	Yes/3	Yes
9300BC (Par Arm)	Yes	Yes	Yes	No	No	No	No	No
9300 (Par Arm) x 9388 Drop Plate	Yes/4	Yes	Yes	No	No	No	No	No
9300BC (Top Jamb)	No	Yes	Yes	No	No	No	No	No
9300 (Top Jamb) x 9388 Drop Plate	Yes	Yes	Yes	Yes	Yes	Yes	Yes	Yes
<hr/>								
9500 (Reg Arm)	No	Yes	Yes	Yes/3	Yes/3,5	Yes/3	Yes/3	Yes/3
9500 (Reg Arm) x 9586 Drop Plate	Yes/4	Yes/4	Yes/4	Yes/3	Yes/3.5	Yes/3	Yes/3	Yes
9500 (Par. Arm)	Yes	Yes	Yes	No	No	No	No	No
9500 (Par. Arm) x 9588 Drop Plate	Yes/4	Yes/4	Yes	No	No	No	No	No
9500 (Top Jamb)	No	Yes	Yes	No	No	No	No	No

FOR SOME PARALLEL ARM INSTALLATIONS "NO" IS LISTED BECAUSE THE LOCATION OF THE OVERHEAD HOLDER/STOP BRACKET WILL INTERFERE WITH THE PA BRACKET

- 1- Do not use SNB to mount back plates
- 2- Minimum 2-7/16" stop width required to install closer bracket and overhead holder bracket in same location
- 3- For interference with Holder SNB and Closers/Back Plates, see ABH Template T-CC
- 4- Back plate inverted
- 5- For 7000 use SNB only

SARGENT CLOSER X ABH HOLDER COMPATIBILITY CHART



BASED ON 36" DOORS, 90 DEG. OPENING, BUTT HINGES

SARGENT CLOSER	CONCEALED			SURFACE				
	1000 1000ADJ	1000SL 1000SA	4000	4400	7000	8000 & HD8000	9000	9000A
281-O (Reg. Arm)	No	Yes	No	Yes	Yes/5	Yes/3	Yes/3	Yes/3
281-O (Reg. Arm) x 281-B**	Yes/4	Yes/4	Yes/4	Yes/4	Yes/3,4,5	Yes/3,4	Yes/3,4	Yes
281-P9 (Par. Arm)	Yes	Yes	Yes	No	No	No	No	No
281-P3 (Par. Arm)*	Yes	Yes	Yes	Yes	Yes	No	Yes	No
281-O (Top Jamb)	No	Yes	Yes	No	No	No	No	No
281-OZ x 281B Drop Plate (Top Jamb)	Yes	Yes	Yes	Yes	No	Yes	Yes	Yes
351-O (Reg. Arm)	No	No	No	Yes/3	Yes/3,5	Yes/3	Yes	Yes
351-O (Reg. Arm) x 351-B**	Yes/4	Yes/4	Yes/4	Yes/3,4	Yes/3,4	Yes/3,4	Yes/3,4	Yes/3,4
351-P9 (Par. Arm)	Yes	Yes	Yes	No	No	No	No	No
351-P3 (Par. Arm)*	Yes	Yes	Yes	Yes/1	Yes/1	No	Yes/1	Yes/1
351-O (Top Jamb)	No	Yes	Yes	No	No	No	No	No
351-OZ x 351B Drop Plate (Top Jamb)	Yes	Yes	Yes	Yes	No	Yes/3	Yes	No
1431-O (Reg. Arm)	No	Yes	No	Yes	Yes	Yes/3	Yes/3	Yes
1431-O (Reg. Arm) x 1430-B**	Yes/4	Yes/4	Yes/4	Yes/3,4	Yes/5	Yes/3,4	Yes/3	Yes/4
1431-P9 (Par. Arm)	Yes	Yes	Yes	No	No	No	No	No
1431-P3 (Par. Arm)*	Yes	Yes	Yes	Yes/1	Yes/1	No	Yes/1	Yes/1
1431-O (Top Jamb)	No	Yes	Yes	No	No	Yes	No	No
1431TJ x 18 Drop Plate (Top Jamb)	Yes	Yes	Yes	Yes	No	Yes	Yes	Yes
1331-JO (Reg. Arm)	No	Yes	No	Yes	Yes/3,5	Yes/3	Yes/3	Yes
1331-JO (Reg. Arm) x 1330-B**	Yes/4	Yes/4	Yes/4	Yes/3,4	Yes/4,5	Yes/2,3,4	Yes/2,3,4	Yes/2,4
1331-JP9 (Par. Arm)	Yes	Yes	Yes	No	No	No	No	No
1331-JO (Top Jamb)	Yes	Yes	Yes	No	No	No	No	No
1331-JO x 1331B Drop Plate (Top Jamb)	Yes	Yes	Yes	Yes	No	No	Yes	No

FOR SOME PARALLEL ARM INSTALLATIONS "NO" IS LISTED BECAUSE THE LOCATION OF THE OVERHEAD HOLDER/STOP BRACKET WILL INTERFERE WITH THE PA BRACKET

- 1- Minimum 3" stop width required to install closer bracket and overhead holder bracket in same location.
2. Do not use SNB to mount back plates
- 3- For interference with Holder SNB and Closers/Back Plates, see ABH Template T-CC
- 4- Back plate inverted
- 5- For 7000 use SNB only

STANLEY CLOSER X ABH HOLDER COMPATIBILITY CHART



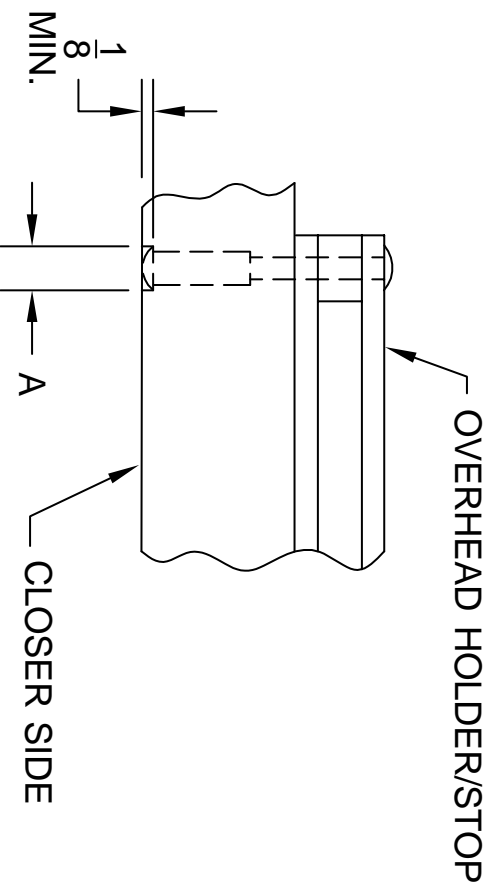
BASED ON 36" DOORS, 90 DEG. OPENING, BUTT HINGES

STANLEY CLOSER	CONCEALED			SURFACE				
	1000 1000ADJ	1000SL 1000SA	4000	4400	7000	8000 & HD8000	9000	9000A
D-3550/D-3551 REG. ARM	No	Yes	No	Yes/3	Yes/3/5	Yes/3	Yes/3	Yes/3
D-3550/D-3551 REG. ARM W/P35-180	Yes/4	Yes/4	Yes/4	Yes/1,3	Yes/3	Yes/1,3	Yes/1,3	Yes/1,3
D-3500/D-3551PA ARM	Yes	Yes	Yes	No	No	No	No	No
D-3550/D-3551 PA W/P45-113	Yes	Yes	Yes	Yes/2	Yes/2	Yes/2	Yes/2	Yes/2
D-3500/D-3551 TJ	No	Yes	Yes	No	No	No	No	No
D-3550/D-3551 HD ARM	Yes	Yes	Yes	No	No	No	No	No
D-4550/D-4551 REG. ARM	No	No	No	Yes	Yes/5	Yes/3	Yes	Yes
D-4550/D-4551 REG. ARM W/P45-180	Yes/4	Yes/4	Yes/4	Yes/3	No	Yes/1,3	Yes/1,3	Yes/1,3
D-4550/D-4551PA ARM	Yes	Yes	Yes	No	No	No	No	No
D-4550/D-4551 PA W/P45-113	Yes	Yes	Yes	Yes/2	Yes/2	Yes/2	Yes/2	Yes/2
D-4550/D-4551 TJ	No	Yes	Yes	No	No	No	No	No
D-4550/D-4551 HD ARM	Yes	Yes	Yes	No	No	No	No	No
D-1650/D-1651 REG. ARM	No	No	No	Yes	Yes/5	Yes	Yes	Yes
D-1650/D-1651 PA ARM	Yes	Yes	Yes	No	No	No	No	No
D-1650/D-1651 TJ	No	Yes	Yes	No	No	No	No	No
QDC100 REG. ARM	No	No	Yes	Yes	Yes/5	Yes	Yes/3	Yes
QDC100 REG. ARM W/8Q00469	Yes/4	Yes/4	Yes/4	Yes/1	Yes/5	Yes	Yes/1,3	Yes/1,3
QDC100 PA ARM	Yes	Yes	Yes	No	No	No	No	No
QDC100 TJ	No	No	Yes	No	No	No	No	No
QDC100 TJ W/8Q00470	Yes	Yes	Yes	Yes	No	No	No	No
QDC100 EDA ARM	Yes/2	Yes/2	Yes	No	No	No	No	No
QDC200 REG. ARM	No	Yes	No	Yes	Yes/2,3,5	Yes/3	Yes/3	Yes
QDC200 REG. ARM W/8Q00107	Yes/4	Yes/4	Yes/4	Yes/1,3	Yes/1,5	Yes/1,3	Yes/1,3	Yes/1
QDC200 PA ARM	Yes	Yes	Yes	No	No	No	No	No
QDC200 TJ	No	No	Yes	No	No	No	No	No
QDC200 TJ W/8Q00105	Yes	Yes	Yes	Yes	No	No	Yes	Yes
QDC300 REG. ARM	No	Yes	No	Yes	Yes/2,3,5	Yes/3	Yes/3	Yes
QDC300 REG. ARM W/8Q00103	Yes/4	Yes/4	Yes/4	Yes/1,3	Yes/1,3,5	Yes/1,3	Yes/1,3	Yes/1
QDC300 PA ARM	Yes	Yes	Yes	No	No	No	No	No
QDC300 TJ	No	No	Yes	No	No	No	No	No
QDC300 TJ W/8Q00104	Yes	Yes	Yes	Yes	No	No	Yes	Yes

FOR SOME PARALLEL ARM INSTALLATIONS "NO" IS LISTED BECAUSE THE LOCATION OF THE OVERHEAD HOLDER/STOP BRACKET WILL INTERFERE WITH THE PA BRACKET

- 1- Do not use SNB to mount back plates
- 2- Min 2-7/16" stop width reqd to install closer bracket & OH holder bracket in same location
- 3- For interference with Holder SNB and Closers/Back Plates, see ABH Template T-CC
- 4- Back plate inverted
- 5- For 7000 use SNB only

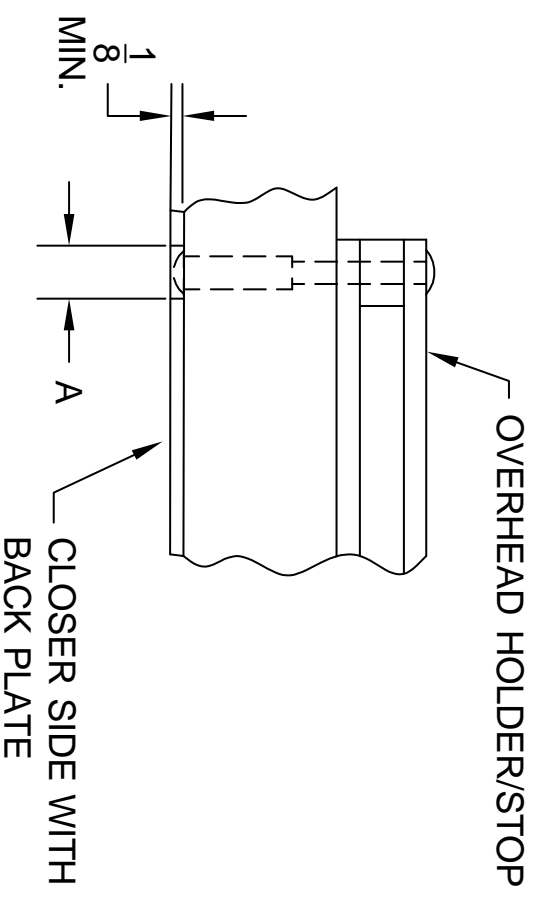
SNB HEAD RECESSED INTO WOOD DOOR
WHEN CONFLICTS OCCUR



MODEL	A
3300ADJ, 4400,	5/8" DIA.
7000, 8000*, HD8000*	1 1/16" DIA.
9000, 9000ADJ	7/8" DIA.

*HOLD OPEN MODEL CANNOT BE MOUNTED ON PULL SIDE

CLEARANCE HOLE IN BACK PLATE WHEN
CONFLICTS OCCUR IN WOOD OR METAL DOOR



MODEL	A
3300ADJ, 4400,	5/8" DIA.
7000, 8000*, HD8000*	1 1/16" DIA.
9000, 9000ADJ	7/8" DIA.

*HOLD OPEN MODEL CANNOT BE MOUNTED ON PULL SIDE

www.abhmf.com

E-mail: abhinfo@abhmf.com
Architectural Builders Hardware Mfg., Inc.
1222 Ardmore Ave., Itasca, IL 60143
630.875.9900; FAX 800.9FAXABH (932.9224)

ABH

© 2012 ABH Mfg., Inc.
Printed in USA

OVERHEAD HOLDERS WITH CLOSER-01.DWG

T-CC

REVISED 10-11-12