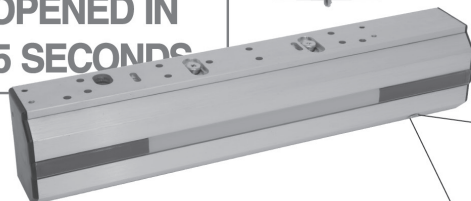
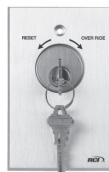


RCI

RUTHERFORD CONTROLS
A DORMA Group Company

In or Out...we make it Easy!®

**PUSH UNTIL
ALARM SOUNDS
DOOR CAN BE
OPENED IN
15 SECONDS**



DE8310CV, BC1M-15, 960 Shown

DE8310

For Single Outswinging Perimeter Doors

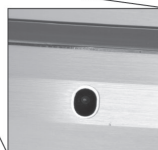
Base: 2-1/8"D x 2-7/8"H x 10-13/16"L
(54mm x 73mm x 275mm)

Sounder or Voice: 2-1/8"D x 2-7/8"H x 11-3/4"L
(54mm x 73mm x 299mm)

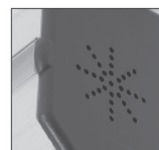
Camera and Voice: 2-1/8"D x 2-7/8"H x 14"L
(54mm x 73mm x 355mm)

Camera and Sounder: 2-1/8"D x 2-7/8"H x 14"L
(54mm x 73mm x 355mm)

Dimensions include 1/4" (6mm) mounting bracket



Available with a Discreet Built-in Camera



Available with a Built-in Sounder



External Sounder provided with base model (DE8310)

Features & Benefits

- All-in-One delayed egress lock
- Built in "sensor" detects when pressure is applied to outward swinging doors – No need to replace existing door hardware
- Field selectable 15 or 30 second release delay with field selectable 0 to 3 second nuisance delay
- Provision for IBC, SBC, NFPA101, UBC, BOCA or NBC of Canada compliance
- Unique highly visible "Red/Green" light panel indicates status of door (local)
- Available with built-in sounder, voice and CCTV monitoring combinations
- Camera comes with BNC and RCA video outputs
- Includes 960 Keyswitch for reset and override, 15 second Building Code Sign; base unit includes external sounder
- Built-in Security Condition Sensor (SCS) feature indicates that the door is closed and bonded
- Dry contact SPDT and DPDT relays provided for local and/or remote monitoring
- Auto sensing voltage from 12 to 24 VDC
- Up to 1200lbs (540kg) holding force
- Standard MultiMag® features included
- Spanish and French voice modules available

Delayed Egress Electromagnetic Lock

The Delayed Egress Electromagnetic Lock is an **All-in-One delayed egress lock with a built-in sensor that detects pressure applied to outward swinging doors**. Built-in sounder, voice and CCTV monitoring combinations make this ideal for applications requiring Loss Prevention, Life Safety and Traffic Control. The DE8310 is unique in that there is no need to replace existing door hardware making this an easy and affordable delayed egress solution.

Available Models

DE8310	Delayed egress with external sounder
DE8310S	Delayed egress with built-in sounder
DE8310V	Delayed egress with built-in voice
DE8310CS	Delayed egress with built-in camera and built-in sounder
DE8310CV	Delayed egress with built-in camera and built-in voice

Highlights

- All-in-One delayed egress lock for applications requiring Loss Prevention, Life Safety and Traffic Control
- Built-in sounder, voice and discreet CCTV monitoring
- Field selectable to meet a variety of building codes
- 5 Year Warranty on electromagnetic lock. 1 Year Warranty on camera and built-in voice/sounder components

Applications

- Health care facilities
- Retail and wholesale centers
- Airports
- Public transit buildings
- Government
- Museums and galleries

Optional Accessories

- Spacers
- Angle Bracket
- "L" Bracket
- Filler Bars
- Power Supply
- Spanish and French Voice Modules
- 30 Second Building Code Sign



RUTHERFORD CONTROLS
A DORMA Group Company

In or Out...we make it Easy![®]

NOTE: Specifications are subject to change without notice.

Specifications	DE8310
Housing Dimensions	2-1/8" (55mm) Deep x 2-7/8" (73mm) High Profile with 10-13/16" (275mm) Length for the base unit 11-3/4" (299mm) Length with voice or sound options 14" (355mm) Length with camera and voice or sound options. This includes the 1/4" (6mm) mounting bracket.
Armature Plate Dimensions	5/8"D x 2-3/8"H x 7-7/16"L (16mm x 61mm x 190mm)
Voltage	Auto sensing voltage 12 to 24 VDC Tolerance ±10%
Power/Current Requirements	Camera Unit: Max 0.79A@12VDC Max 0.39A@24VDC Voice/Sounder Unit: Max 0.66A@12VDC Max 0.33A@24VDC Base Unit with external sounder: Max 0.61A@12VDC Max 0.32A@24VDC
Holding Force	Up to 1200lbs (540kg) pounds
Certification	cULus Listed GWXT Auxiliary Locks Patent pending cURus Component for use in FWAX Special Locking Arrangements
Operating Temperature	Not for use in outdoor environments. Circuit board operating temperature 14°F to 140°F (-10°C to 60°C)

NOTE: This product is intended for use with Special Locking Arrangements which are installed in accordance with the manufacturer's installation and operation instructions, the Life Safety Code, NFPA 101 of the National Fire Protection Association and the local authority having jurisdiction. The power for this unit is to be provided by a Listed (ALVY, FULA7, FUPPC, UEHX7 APHV or APHV7) Class 2 power supply when designated as a Special Locking Arrangement (FWAX). RCI recommends frame reinforcement and our filtered, regulated DC voltage 10 Series power supplies.

Function Descriptions	
Nuisance Delay	Accommodates accidental triggering with settings of 0 to 3 seconds as defined by the local Building Code.
Release Delay	Set at 15 seconds, this delay protects against unauthorized egress. It may be extended to 30 seconds with the approval of the local Authority Having Jurisdiction.
Light Panel	This full length feature is a highly visible red and green status indicator.
Sound Module*	This built-in sounder pulses slowly during the short nuisance delay and sounds steady through the release delay until the door unlocks. If forced open before the set release delay has lapsed, the sounder cannot be turned off without switching the system power off.
Voice Module*	Clear messages advise the exit status as follows: "Unauthorized personnel prohibited." "The emergency system has been activated. The door will unlock in a moment." "The door is now unlocked, please exit." If forced (before the set release delay has lapsed), the following warning is delivered: "Unauthorized access. Security personnel have been alerted and will arrive momentarily."
Camera Module*	Provides continuous video signal to DVR equipment (BNC and RCA connectors provided)

* 5 Year Warranty on electromagnetic lock. 1 Year Warranty on camera and built-in voice/sounder components

NOTE: All installations must be approved by the Local Authority Having Jurisdiction (AHJ)

RCI also offers a complete line of Electromagnetic Locks, Electric Strikes, Power Supplies, Switches, Keypads & Readers, Exit Devices, Systems & Door Hardware.