



XE360™ Series

User guide

Contents

iv	FCC Statements
v	IC Statements
vi	Contact information
vi	Warnings and cautions
7	Introduction
7	Lock diagrams
8	Power
9	Commissioning
9	Lock modes
9	Register a commercial construction credential
10	Diagnostics and Troubleshooting
11	Factory default reset (FDR)
11	DPS (door position switch)
11	REX (request for exit)
12	Troubleshooting
12	Factory default reset

FCC Statements

FCC Compliance Statements

- This device complies with Part 15 of the FCC Rules. Operation is subject to the following two conditions: (1) this device may not cause harmful interference, and (2) this device must accept any interference received, including interference that may cause undesired operation.
- Changes or modifications not expressly approved by Schlage Lock Company could void the user's authority to operate the equipment.
- This equipment has been tested and found to comply with the limits for a Class B digital device, pursuant to Part 15 of the FCC Rules. These limits are designed to provide reasonable protection against harmful interference in a residential installation. This equipment generates, uses and can radiate radio frequency energy and, if not installed and used in accordance with the instructions, may cause harmful interference to radio communications. However, there is no guarantee that interference will not occur in a particular installation. If this equipment does cause harmful interference to radio or television reception, which can be determined by turning the equipment off and on, the user is encouraged to try to correct the interference by one or more of the following measures:
 - Reorient or relocate the receiving antenna.
 - Increase the separation between the equipment and receiver.
 - Connect the equipment into an outlet on a circuit different from that to which the receiver is connected.
 - Consult the dealer or an experienced radio/TV technician for help

FCC Labeling Requirements

- Exterior of product must include "Contains Transmitter Module FCC ID: XPB-OEM 200-XXXX" where XXXX is the model included in the installation

OEM 200 Model	FCC Certification Number
80mm Multi-Tech	XPB-OEM 200-80MT
80mm Smart Only	XPB-OEM 200-80SM
90mm Multi-Tech	XPB-OEM 200-90MT
90mm Smart Only	XPB-OEM 200-90SM

FCC Integration Requirements

1. The FCC/IC Statements contained in this guide must also be included in the final product's documentation.
2. Applicable standards are 15.225, 15.209, and RSS-210.
3. For the purposes of compliance testing, it may be necessary to put the OEM 200 Module into a 'constant read' mode. In order to achieve this, present an Anti-Passback configuration card within the first minute of the module being powered. If performed correctly, the module will reboot and presenting a credential will result in constant reading and rereading of a credential as long as it remains in the operating volume of the antenna. This differs from normal operation in that when a credential is polled for a second time under normal operation the credential data is not output as it is seen as redundant.
4. Take care to NOT to place the OEM 200 antenna boards near other wireless antennas as they may cause interference with each other and result in the need for additional RF testing. Preferred distance is three (3) inches from other wireless transceivers.
5. The OEM 200 is only FCC authorized for the specific rule parts listed on the grant (the applicable standards from note #2). The host product manufacturer is responsible for compliance to any other FCC rules that apply to the host not covered by the modular transmitter grant of certification.

IC Statements

IC Compliance Statements

- This device contains license-exempt transmitter(s)/receiver(s) that comply with Innovation, Science and Economic Development Canada's licence-exempt RSS(s). Operation is subject to the following two conditions:
 6. This device may not cause interference.
 7. This device must accept any interference, including interference that may cause undesired operation of the device.
- L'émetteur/récepteur exempt de licence contenu dans le présent appareil est conforme aux CNR d'Innovation, Sciences et Développement économique Canada applicables aux appareils radio exempts de licence. L'exploitation est autorisée aux deux conditions suivantes :
 1. L'appareil ne doit pas produire de brouillage;
 8. L'appareil doit accepter tout brouillage radioélectrique subi, même si le brouillage est susceptible d'en compromettre le fonctionnement

IC Labelling Requirements

- The host product shall be properly labelled to identify the modules within the host product.

The ISED certification label of a module shall be clearly visible at all times when installed in the host product; otherwise, the host product must be labelled to display the ISED certification number for the module, preceded by the word "contains" or similar wording expressing the same meaning, as follows:

Contains IC: XXXXXX-YYYYYYYYYYY

Where XXXXX-YYYYYYYYYYY is one of the ISED certification numbers from the following table

OEM 200 Model	ISED Certification Number
80mm Multi-Tech	8053B-OEM 20080MT
80mm Smart Only	8053B-OEM 20080SM
90mm Multi-Tech	8053B-OEM 20090MT
90mm Smart Only	8053B-OEM 20090SM

Contact information

Should a system design engineer or developer need assistance, they should contact technical support at:

Phone: 1-877-671-7011

www.allegion.com/us

MIFARE® and DESFire™ are registered trademarks of NXP B.V.

Warnings and cautions

WARNING

Warnings indicate potentially hazardous conditions, which if not avoided or corrected, may cause death or serious injury.

CAUTION

Cautions indicate potentially hazardous conditions, which if not avoided or corrected, may cause minor or moderate injury. Cautions may also warn against unsafe practices.

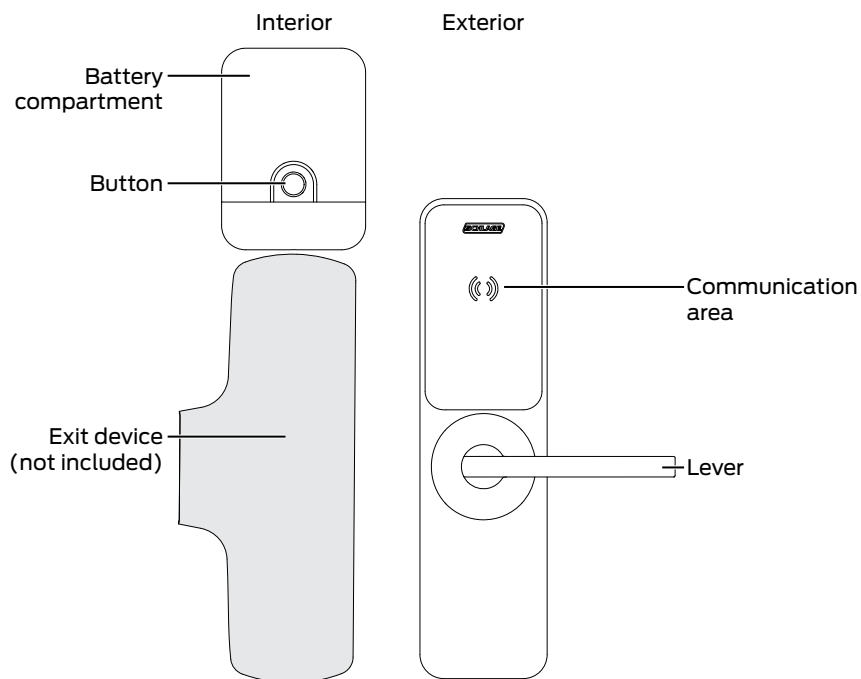
NOTICE

Notices indicate a condition that may cause equipment or property damage only.

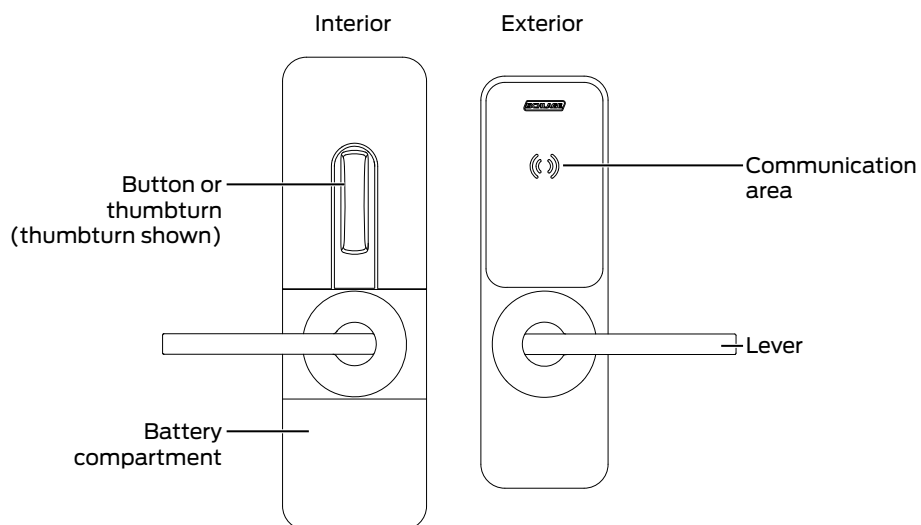
Introduction

Lock diagrams

XE360-EW

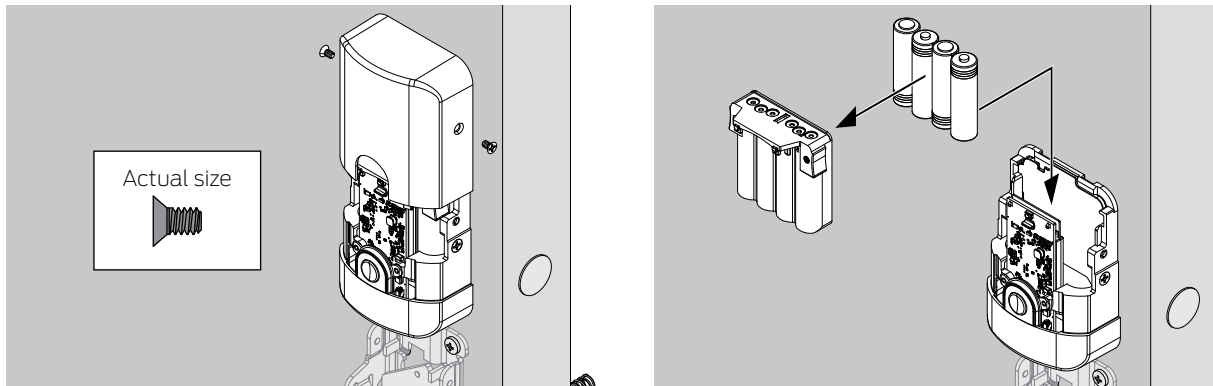


XE360-M and XE360-T

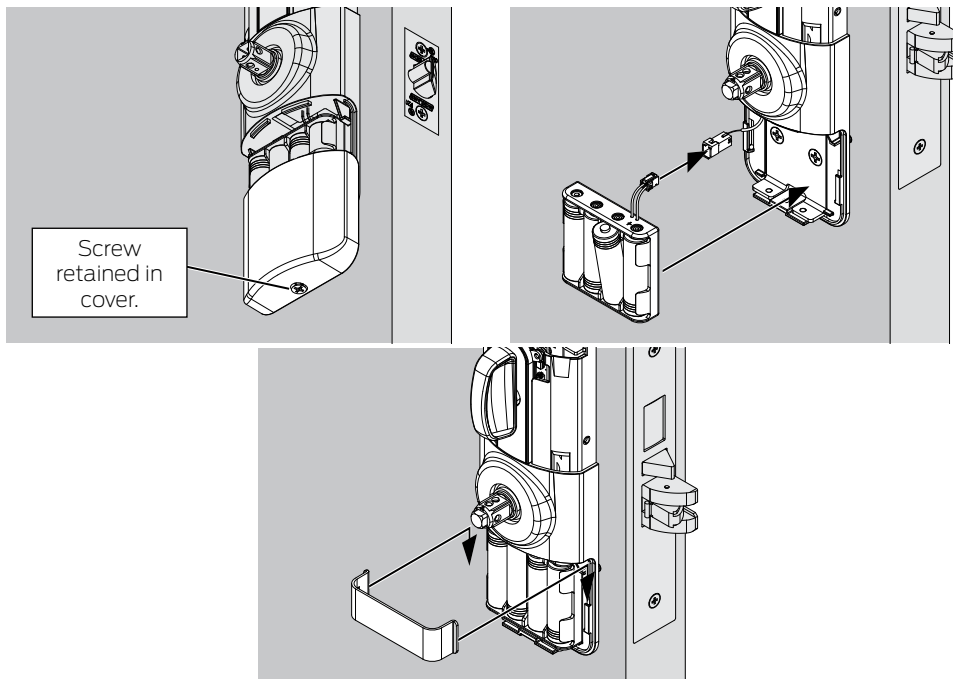


Power

XE360-EW



XE360-M/XE360-T



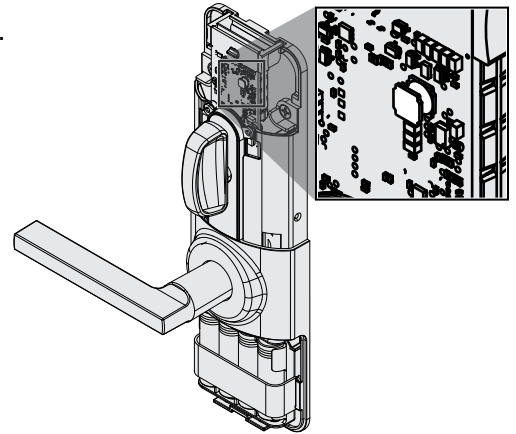
Insert batteries as shown. Replace batteries as necessary after the low battery warning, or on a set schedule to ensure continuous operation.

- ➔ Use standard alkaline batteries. Lithium batteries are not recommended as there is little warning before the battery voltage is too low for continued operation.

Commissioning

Commissioning is the process of adding the lock into the access control system. Once commissioned, the lock(s) can be controlled using [Allegion Engage™](#).

1. Power the lock. The initiation sequence will begin. Wait for a steady **blue** light and one (1) beep.
2. Press and release the mode switch to enter manual commissioning mode.
3. Open the Engage Mobile Application and follow the steps to connect the lock.
4. The lock will blink one (1) long **blue** light when commissioning is complete. The lock will be displayed in the app.
5. Once the sequence is complete, the lock will disconnect. The lock will now operate in normal mode.



Lock modes

Normal mode

Once the lock is commissioned, it can be controlled using [Allegion Engage](#).

Multi-family construction mode

When in multi-family construction mode, the lock may be unlocked by presenting any credential with the same 48X-type and facility code.

1. While the lock is in **FDR mode**, press and hold the mode switch for three (3) seconds. The lock will blink one (2) **green** light, and beep one (1) time, and enter construction mode.
2. Within twenty (20) seconds, present a 48X-type credential, with a valid facility code, to the lock. The lock will blink four (4) **green** lights and beep one time.
3. The lock will now operate in multi-family construction mode.

Commercial construction mode

When in commercial construction mode, the lock may be unlocked by presenting a registered credential.

1. While the lock is in **FDR mode**, press and hold the mode switch for three (3) seconds. The lock will blink one (1) **green** light, and beep one (1) time, and enter construction mode.
2. Within twenty (20) seconds, press and hold the mode switch and present a master credential to the lock. Then release the mode switch. The lock will blink five (5) **green** lights and beep one time.
3. The lock will now operate in commercial construction mode.

Register a commercial construction credential

1. While in **Commercial construction mode**, present a master credential to the lock. The lock will blink one (1) **green** light and beep one (1) time.
2. Present a new credential to the lock. This credential will become a registered commercial construction mode credential.
3. This credential may now be used to unlock the lock.

Diagnostics and Troubleshooting

Troubleshooting	
Problem	Solution
Manual commissioning failed.	<p>When commissioning fails, the lock will revert to FDR mode. Press and release the mode switch again to restart the process.</p> <ul style="list-style-type: none"> • Confirm that bluetooth is enabled on the mobile device. • Confirm that the mobile device is not currently connected to another device. • Confirm that the lock is displaying steady blue LED. If not, restart the process by pressing and releasing the mode switch.
During commissioning, the blue light went out.	<ul style="list-style-type: none"> • The lock will advertise for two (2) minutes. If commissioning is not initiated within that time, the lock will stop advertising. Press and release the mode switch to restart advertising.
DPS not responding	<ul style="list-style-type: none"> • Cycle power on the lock and try diagnostics again. • If cycle of power does not work, remove lock from door, disconnect power and verify DPS cable is not pinched or has become disconnected. If that is the case, reconnect and proceed to re-install then repeat diagnostics.
REX not responding	<ul style="list-style-type: none"> • Cycle power on the lock and try diagnostics again. • If cycle of power does not work, remove lock from door, disconnect power and verify REX Switch cable is not pinched or has become disconnected. If that is the case, reconnect and proceed to re-install then repeat diagnostics.

Glossary and acronyms	
Term	Definition
Advertising	the lock state in which the lock is sending out a bluetooth signal so that it may be commissioned. Once initiated, the lock will advertise for tow (2) minutes.
Commissioning	adding the lock into the access control system
FDR	Factory default reset
FDR mode	the lock state in which the lock is set to factory settings
DP	door position switch
REX	request for exit

Lock indicators			
Function	Actions	Lights	Beeps
Initialization complete		3 green short	—
Valid credential presented	Lock unlock	1 green	1
Factory default reset (FDR)	Mode activated	red on	1
	Timeout	2 red long	2
	Lock FDR initiated	2 red short	2
	Reader FDR initiated	3 red short	3
	In progress	solid red	—
	Not successful	2 red long	2
	Successful	1 green long	1 long

Lock indicators			
Function	Actions	Lights	Beeps
Construction mode	Mode initiated	green on	1
	Construction mode activated	5 green fast	1
	Timeout	2 red long	—
Test mode	Mode activated	yellow on	steady
Manual commissioning mode	Advertising	blue on	1
	MAPP connected	1 blue long	—
Door position sensor (DPS)	Door open	1 blue	1
	Door closed	2 blue	2
Request for exit (REX)	REX closed	1 yellow fast	1
	REX open	2 yellow fast	2
Internal push button (IPB)	Door unlocked with IPB	1 green	1
	Door locked	2 red	1
Low battery warning	Batteries need to be replaced	9 red	—

Factory default reset (FDR)

1. Remove lock cover.
2. Press and hold button for seven (7) seconds, until light turns red.
3. Initiate FDR:
 - To perform FDR on the lock, press the button one (1) time. Lock will blink red two (2) times and beep two (2) times.
 - To perform FDR on the reader, press the button two (2) times. Lock will blink red three (3) times and beep three (3) times.
4. Wait for one (1) long green light and one (1) long beep to confirm successful FDR.
 - FDR was not successful if lock blinks red two (2) times and beeps two (2) times.

DPS (door position switch)

To ensure the DPS is working properly, follow these diagnostic steps:

1. Power lock and wait for the steady blue light.
 2. Press and release the mode switch to stop the lock from advertising.
 3. The lock should blink one blue light and beep one time on both sides of the door to indicate open.
 4. The lock should blink two blue lights and beep two times on both side of the door to indicate closed.
- ➔ See **Troubleshooting** if lock is not responding as described.

REX (request for exit)

1. Power lock and wait for the steady blue light.
 2. Press and release the mode switch to stop the lock from advertising.
 3. The lock should blink one yellow light and beep one time on both sides of the door to indicate closed.
 4. The lock should blink two yellow lights and beep two times on both sides of the door to indicate closed.
- ➔ See **Troubleshooting** if lock is not responding as described.

Troubleshooting

Troubleshooting	
Problem	Solution
Manual commissioning failed.	<p>When commissioning fails, the lock will revert to FDR mode. Press and release the mode switch again to restart the process.</p> <ul style="list-style-type: none">• Confirm that bluetooth is enabled on the mobile device.• Confirm that the mobile device is not currently connected to another device.• Confirm that the lock is displaying steady blue LED. If not, restart the process by pressing and releasing the mode switch.
DPS not responding	<ul style="list-style-type: none">• Cycle power on the lock and try diagnostics again.• If cycle of power does not work, remove lock from door, disconnect power and verify DPS cable is not pinched or has become disconnected. If that is the case, reconnect and proceed to re-install then repeat diagnostics.
REX not responding	<ul style="list-style-type: none">• Cycle power on the lock and try diagnostics again.• If cycle of power does not work, remove lock from door, disconnect power and verify REX Switch cable is not pinched or has become disconnected. If that is the case, reconnect and proceed to re-install then repeat diagnostics.

Factory default reset

1. Remove lock cover.
2. Press and hold button for seven (7) seconds, until light turns **red**.
3. Initiate FDR:
 - To perform FDR on the lock, press the button one (1) time. Lock will blink **red** two (2) times and beep two (2) times.
 - To perform FDR on the reader, press the button two (2) times. Lock will blink **red** three (3) times and beep three (3) times.
4. Wait for one (1) long **green** light and one (1) long beep to confirm successful FDR.
 - FDR was not successful if lock blinks **red** two (2) times and beeps two (2) times.

About Allegion

Allegion (NYSE: ALLE) is a global pioneer in seamless access, with leading brands like CISA®, Interflex®, LCN®, Schlage®, SimonsVoss® and Von Duprin®. Focusing on security around the door and adjacent areas, Allegion secures people and assets with a range of solutions for homes, businesses, schools and institutions. Allegion had \$2.9 billion in revenue in 2019 and sells products in almost 130 countries.

For more, visit www.allegion.com

KRYPTONITE ■ LCN ■  ■ STEELCRAFT ■ VON DUPRIN