



47570180

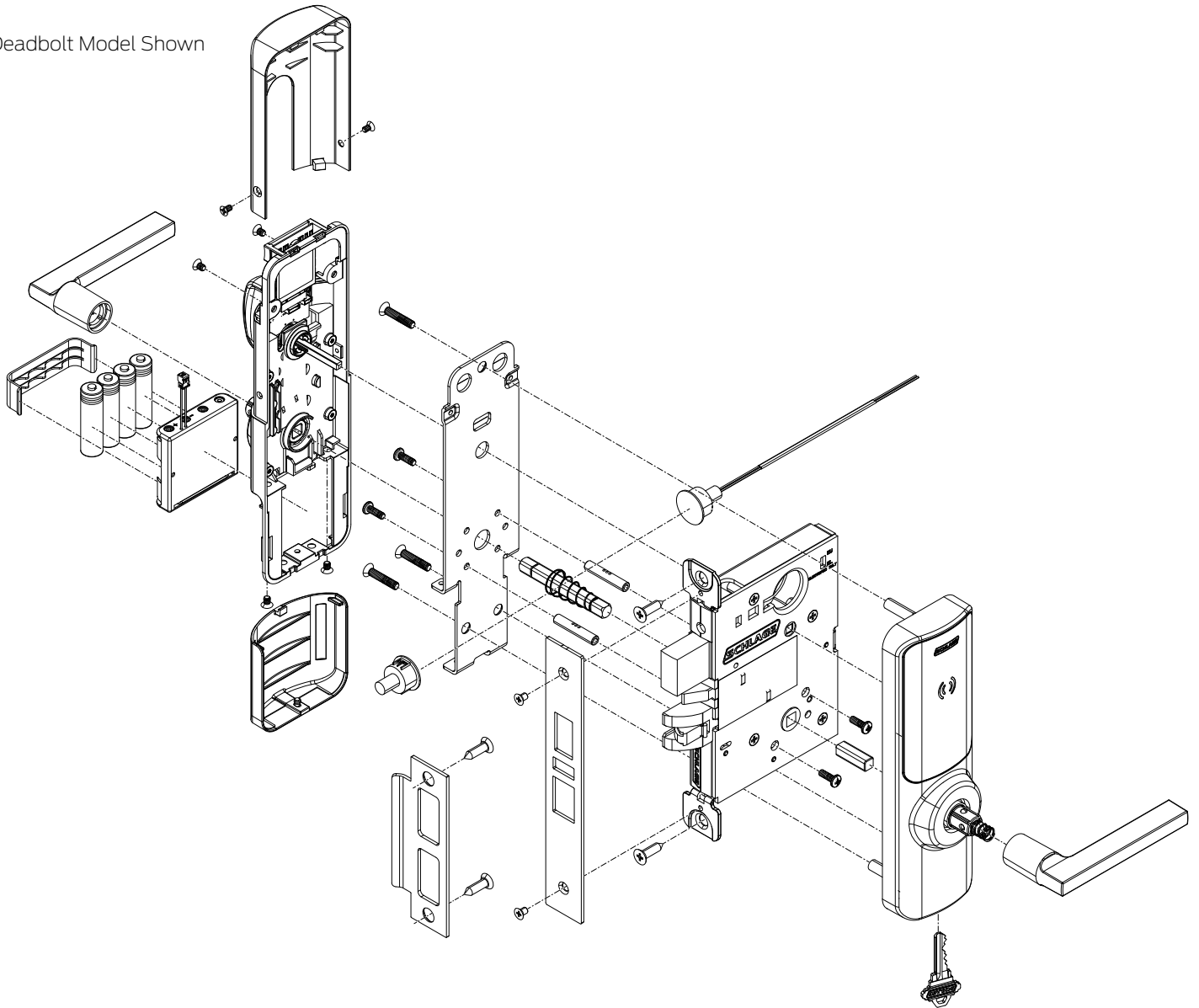
# XE360-M Series



Mortise

Installation Instructions

Deadbolt Model Shown



## Specifications and Certifications


## Warnings and Cautions

### WARNING

Warnings indicate potentially hazardous conditions, which if not avoided or corrected, may cause death or serious injury.

### CAUTION

Cautions indicate potentially hazardous conditions, which if not avoided or corrected, may cause minor or moderate injury. Cautions may also warn against unsafe practices.

### NOTICE

Notices indicate a condition that may cause equipment or property damage only.

## Installation

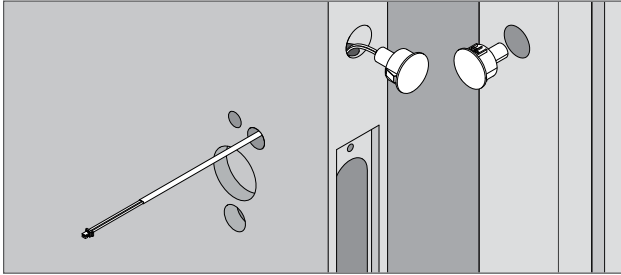
- ① **Bags of fasteners are labeled to match the labels in the installation steps. Look for the labels on the steps before opening bags of fasteners.**

**1** Prepare door, if needed.

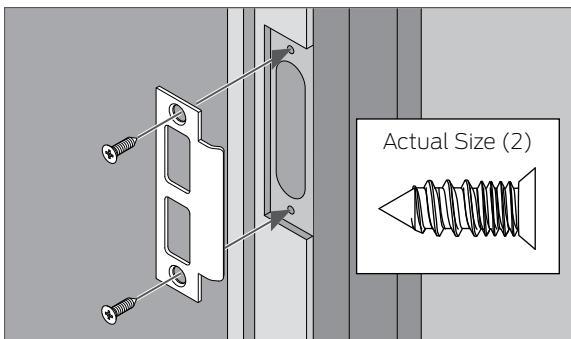
**Check the included door template to complete the door preparation.**

**2** Install DPS (door position switch), if desired.

Route the cable through the hole and then push the DPS into the hole.



**3** Install strike.



**4** Install chassis.

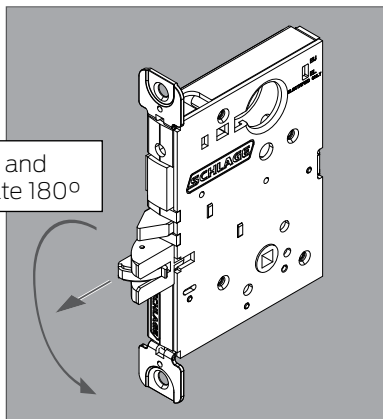
### NOTICE

Check lock handing before installation.

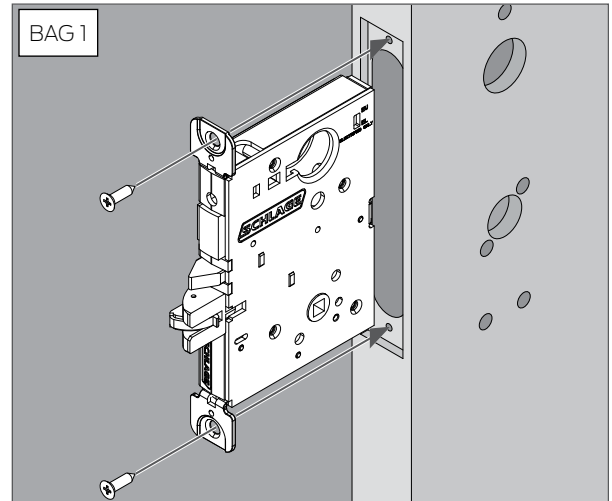
4a To change handing, if necessary, pull latch out and rotate 180°.

Deadbolt model shown

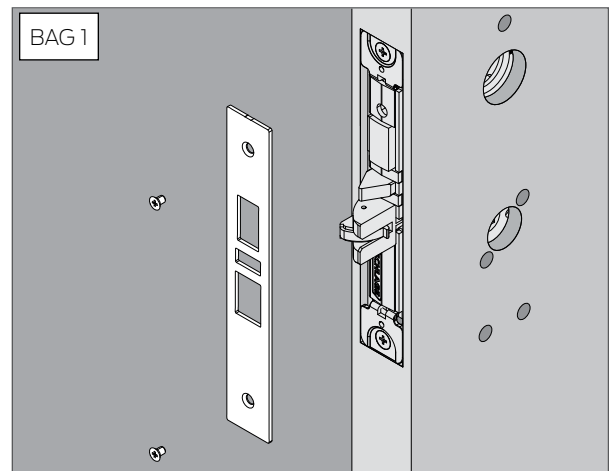
Pull and rotate 180°



4b Insert chassis into mortise and secure with screws.

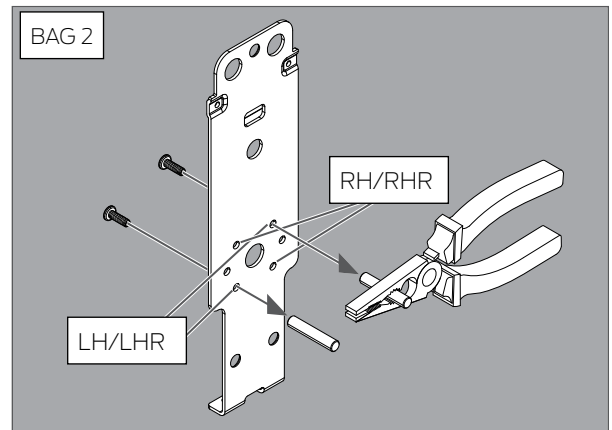


4c Install cover plate.

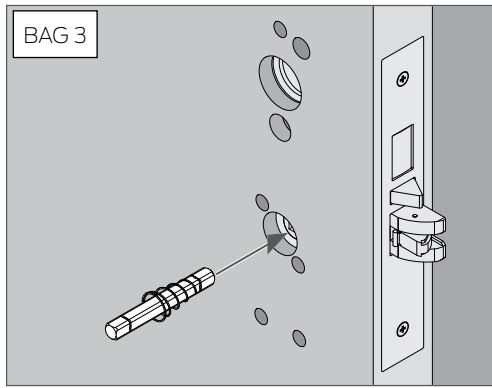


**5** Install posts onto interior plate.

Use hole pair that matches handing.

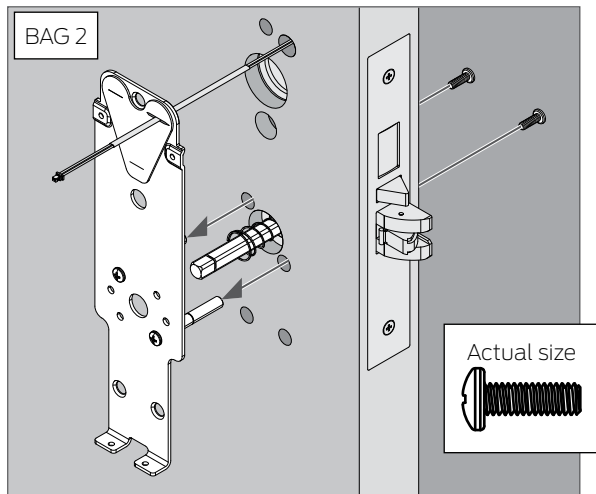


## 6 Install interior spindle.

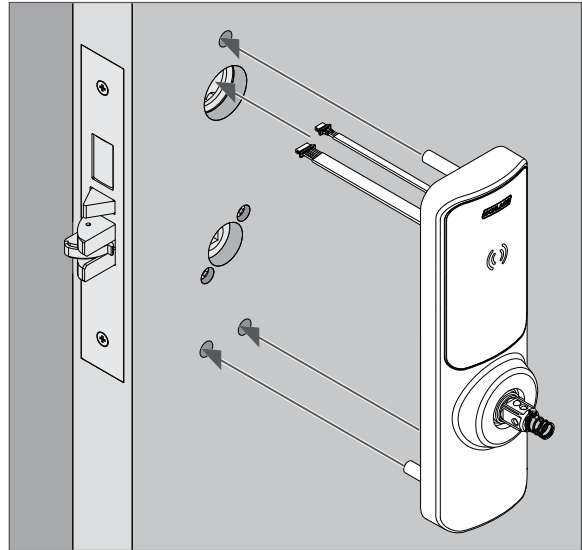


## 7 Install interior plate.

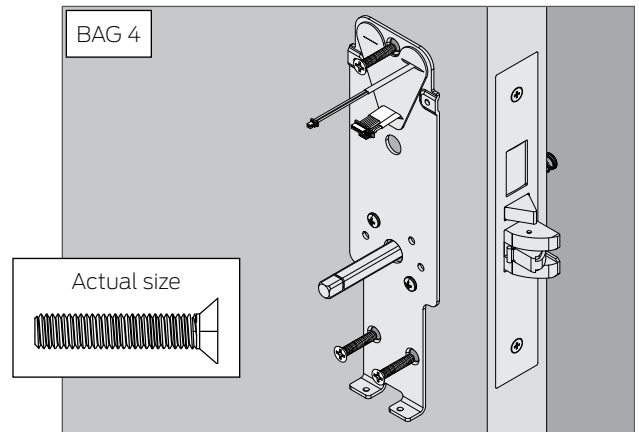
- 7a Route spindle through hole in plate.
- 7b Route DPS wire through gasket as shown.
- 7c Push the plate against the door.
- 7d Secure with two (2) screws.



- 8b Route cables and posts through holes as shown. Push assembly against door and hold.

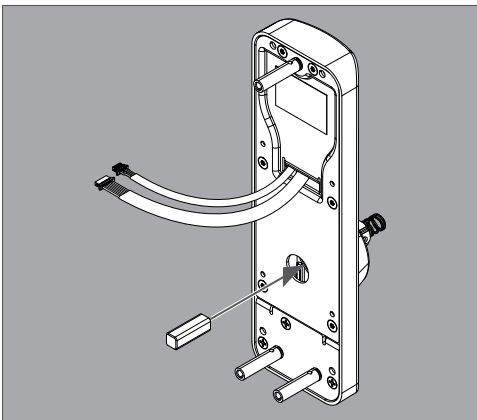


- 8c Route cables through gasket on interior plate. Install three (3) screws.



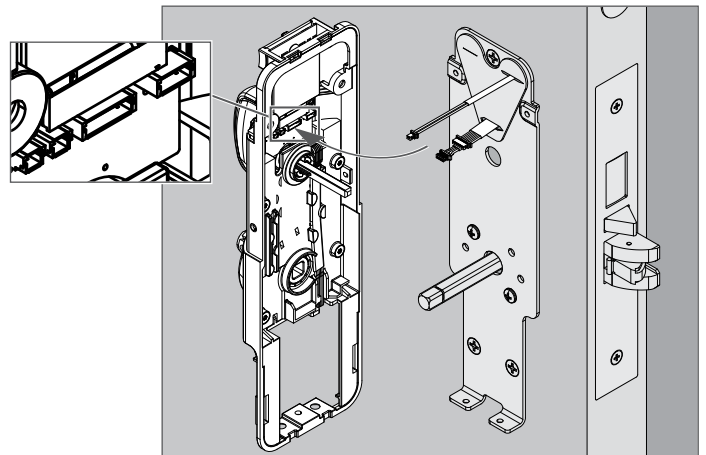
## 8 Install exterior assembly.

- 8a Install spindle into assembly.



## 9 Install interior assembly

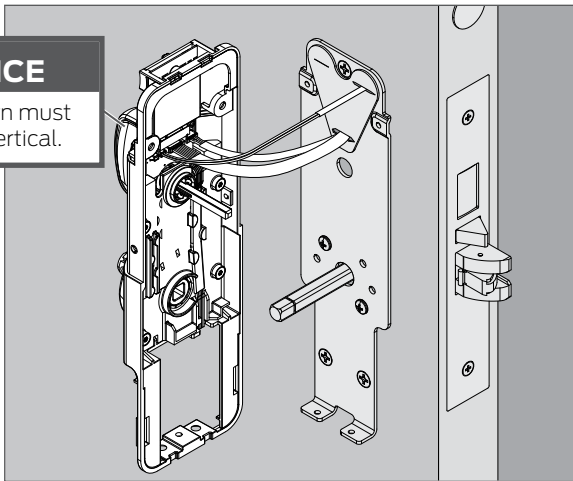
- 9a Connect three (3) cables. The cables are color-coded.



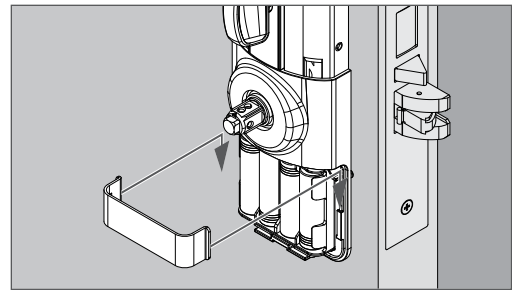
9b Push assembly onto spindle.

### NOTICE

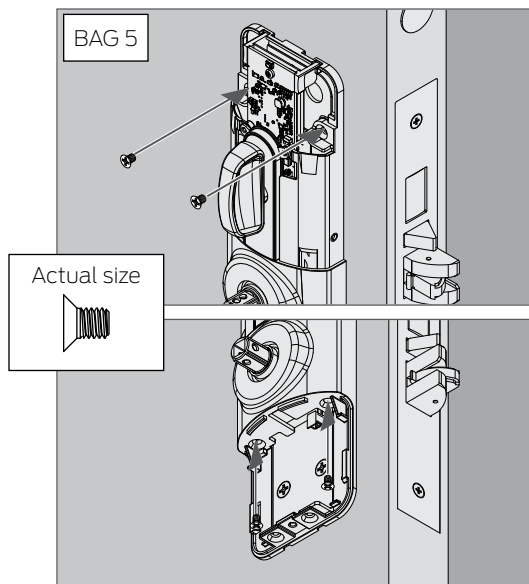
Thumbturn must remain vertical.



10d Install retainer.

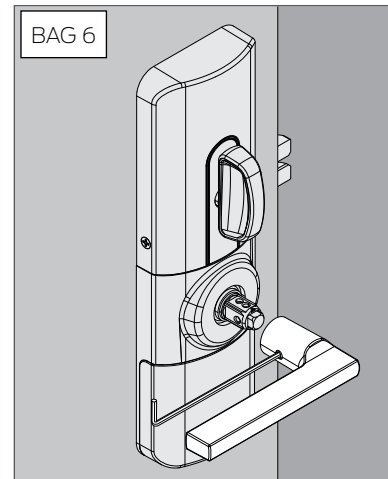


9c Secure assembly.



## 11 Install levers.

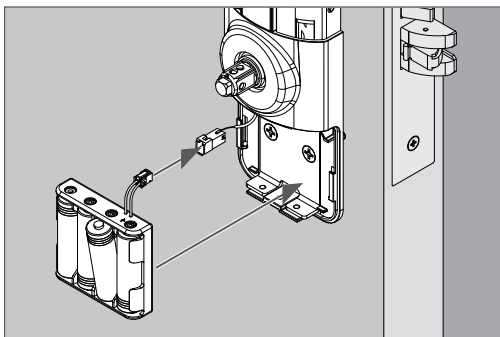
- 11a Loosen set screw in lever, using included hex wrench.
- 11b Push lever on.
- 11c Tighten set screw firmly using included hex wrench.
- 11d Repeat for other side of door.



ⓘ **Complete Testing now, before installing covers.**

## 10 Install batteries and tray.

- 10a Install batteries into tray.
- 10b Connect battery connector.
  - ⓘ **The lock will begin to initialize when the batteries are connected. See Testing.**
- 10c Install tray into lock.

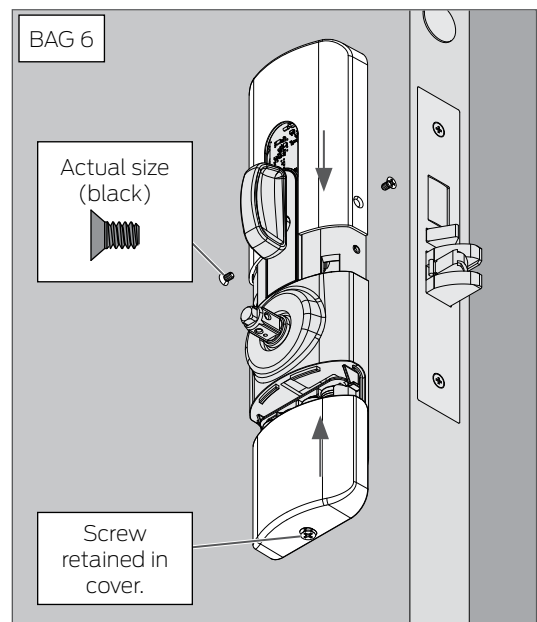


### NOTICE

Do not crimp cables.

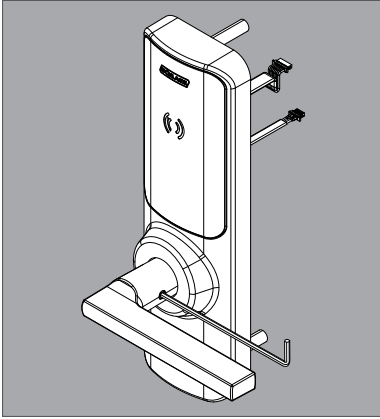
## 12 Install covers.

- 12a Slide covers on.
- 12b Secure with screws.

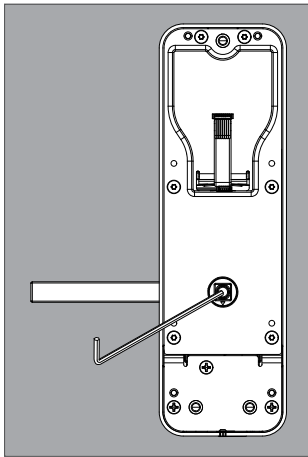


## Rehanding

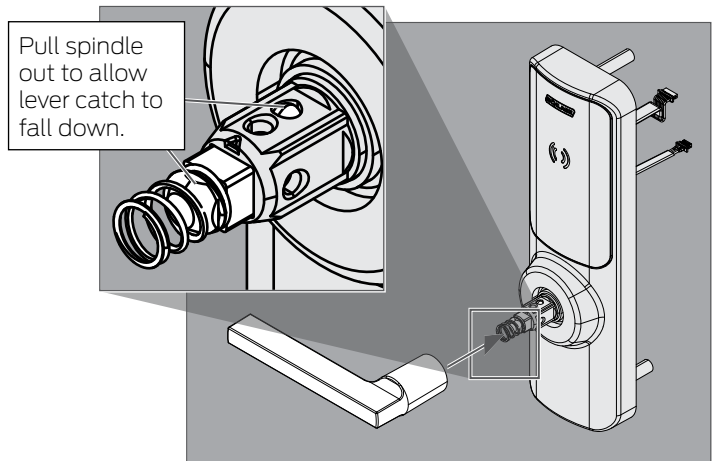
- Remove exterior assembly from door.
- Loosen set screw.



- Use hex wrench to press center of assembly to release the lever.



- Ensure lever catch is recessed, and then reinstall the lever, facing the opposite direction. Lever will click when fully installed. Tighten set screw.



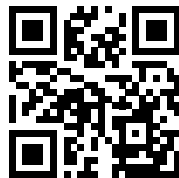
- Reinstall all remaining parts.

### NOTICE

Repeated lever removal may lead to failure of the set screw.

## Testing

- See the User Guide for detailed troubleshooting. See [alle.co/XE360UG](http://alle.co/XE360UG).

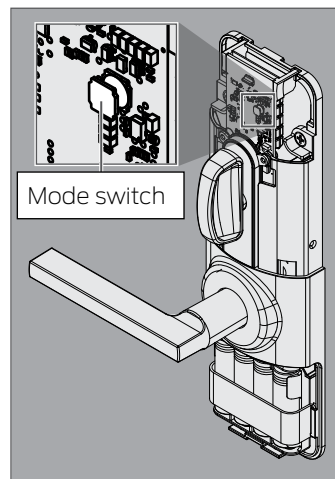


### Basic operation

- Install the batteries. See step 10.
- Allow the system to initialize.
- Verify three (3) green blinks on the exterior assembly.

### DPS

- Ensure the DPS is installed and connected correctly. See steps 2 and 9a.
- The lock should be in factory (FDR) mode.
- After power is applied and the system completes initialization (3 green blinks), cancel advertising by pressing and releasing the mode switch.
- Open the door. The interior and exterior indicators will blink blue (1X) and beep (1X)
- Close the door. The interior and exterior indicators will blink blue (2X) and beep (2X)



Customer Service Servicio al cliente Service à la clientèle

1-877-671-7011

[www.allegion.com/us](http://www.allegion.com/us)



© Allegion 2023  
Printed in U.S.A.  
47570180 Rev. 01/23-5