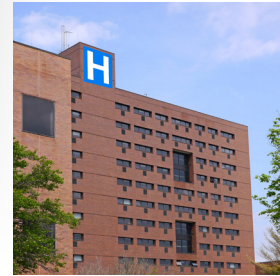


Progressive. Elegant.
Durable.

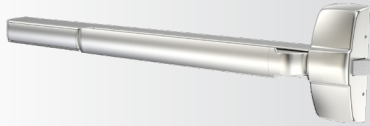
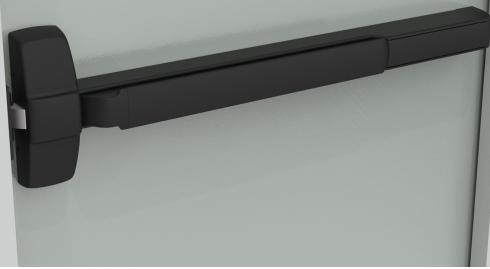
PED5000 Series Exit Device

Corbin Russwin PED5000 Series is the **next generation** of exit devices. With new and enhanced features, this exit device is ideal for environments that require elegance along with maximum strength and durability; all configurations (rim, mortise, surface vertical and concealed vertical rod) exceed ANSI/BHMA Grade 1 requirements.



Experience a safer
and more open world

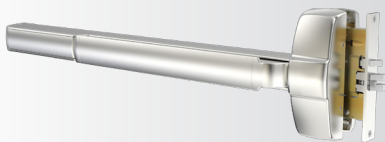
PED5000 Series Exit Device



PED5200 Wide Stile Rim Exit Device



PED5400 Wide Stile Surface Vertical Rod Exit Device



PED5600 Wide Stile Mortise Lock Exit Device



PED5800 Wide Stile Concealed Vertical Rod Exit Device

BENEFITS

- **Strength & Reliability:** Independently-verified cycle and strength testing proves an extended life of the PED5000 Series
- **Security:** Multiple security features provide additional resistance against vandalism and unauthorized entry
- **Aesthetics:** Attractive, minimalist design featuring many levers and architectural finishes to blend with any décor
- **Sustainable:** Contributes to your sustainability efforts – less product replacements due to long life and high post-consumer recycled content.

FEATURES

- **Innovation**
 - All wires for electromechanical options are routed through the rail
 - Vertical rods adjusted at the center case on CVR and SVR devices
 - Hidden dogging mechanism
 - Large chassis indicator viewing window
 - EcoFlex® technology on all electrified trim
 - Enhanced Motorized Electric Latch Retraction features
 - Improved Delayed Egress functionality
 - Motorized Electric Latch Retraction available with FEMA certified devices
 - 5lb pressure latch release optional on all rim and concealed vertical rod device types to comply with California building codes
- **Security**
 - Pushrail dogging option available, with or without indicators
 - Lock Status Indicator option available for rim devices
 - Torx® screws
 - Master keying with Corbin Russwin Security Key systems available (Access 3® and Pyramid)
- **Strength and Durability**
 - ANSI/BHMA A156.3 Grade 1 certified
 - Robust end cap design for high impact environments
 - Built to withstand abusive conditions and designed to deflect impacts from carts
 - Heavy duty mounting construction
 - 10-year warranty
- **Aesthetics**
 - Multiple trim options for wide and narrow stile applications
 - Flush pushbar and rail carrier design to minimize catch points
 - No visible fasteners on rail assembly
 - Mixed finish options
 - Available with Muséo Line decorative lever trim
 - Available with MicroShield® or CuVerro Shield coating

Corbin Russwin Architectural Hardware
225 Episcopal Road, Berlin, CT 06037
Phone 800-543-3658
Fax 800-447-6714
www.corbinrusswin.com

The ASSA ABLOY Group is the global leader in access solutions. Every day, we help billions of people experience a more open world.