

NOTES: SEE MASTER SHEET #10001 FOR SUGGESTED REINFORCING

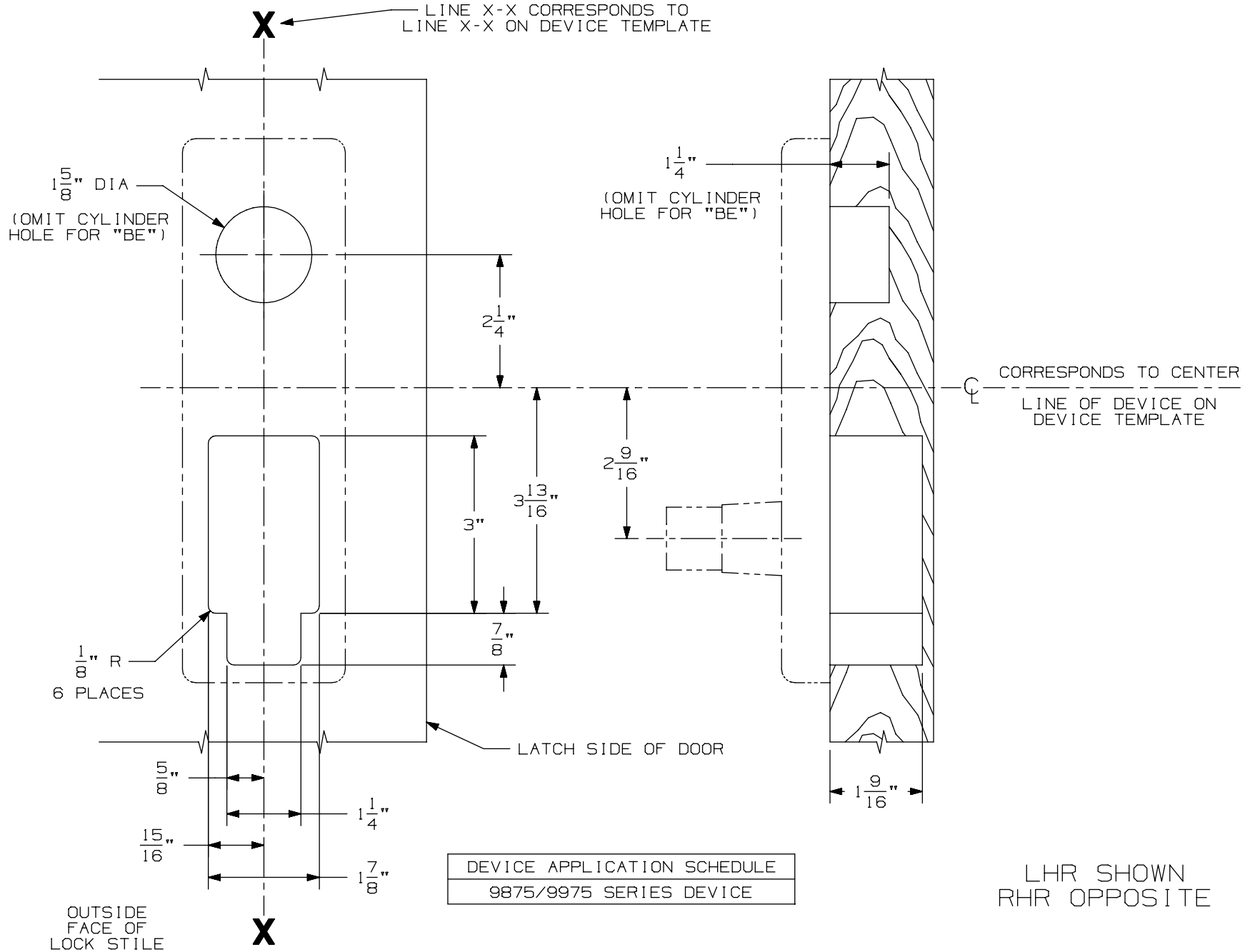
994/996L & 994/996L-BE M Series
Trim Wood Door Application

TEMPLATE
NUMBER:

W20006_a

DATE:
05-29-13

VON DUPRIN[®]



DEVICE APPLICATION SCHEDULE
9875/9975 SERIES DEVICE

LHR SHOWN
RHR OPPOSITE

NOTE: MOUNTING HOLES TO BE PREPARED AT INSTALLATION ON DOOR.

FOR CUTOUTS ON INSIDE FACE OF DOOR SEE DEVICE TEMPLATE.