



# M420/422

## Electromagnetic locks



### Overview

M400 Series electromagnetic locks from Schlage are designed with the customer in mind to be robust, easy-to-install, and secure. The unique bayonet mounting feature makes installation easier, allowing the installer to have their hands free during the mounting process.

All M400 Series electromagnetic locks are symmetrical with field-selectable handing, allowing optimum placement of the magnet, no matter the application. They are designed to provide automatic voltage sensing for 12 and 24 volts along with polarity protection to make wiring less complex. M420 models are tested and certified to meet or exceed UL 1034 and BHMA 500 lb hold force requirements.

The M420 electromagnetic locks come in four configurations to meet your specific security needs. Single and double door models are offered in standard configurations. Plus versions of these models with "P" designations add intelligent sensing and reporting features needed to integrate with access control systems along with additional available options. Kits are available for top jamb, double door, and glass door applications.

### Features and benefits

- 500 lb. hold force rating for traffic control applications
- "Plus" models offer magnetic bond sensor (MBS), adjustable relock time delay (RTD) and door position switch (DPS)
- Automatic voltage selection (AVS)
- Symmetrical design with field-selectable handing for optimum placement
- Bayonet mount simplifies installation by eliminating the need to hold lock overhead while securing
- Armature mount pivot feature compensates for slight opening imperfections
- Optional mounting kits available for top jamb mount, double door and Herculite glass doors
- Aluminum housing in 628 satin finish
- ANSI/BHMA 156.23 Grade 1, UL 1034, UL 10C, cUL, CFSM certifications
- Limited lifetime warranty on magnetic coil assembly

## Additional features

### All models

- Automatic Voltage Selection (AVS) senses the voltage applied to the lock and responds accordingly

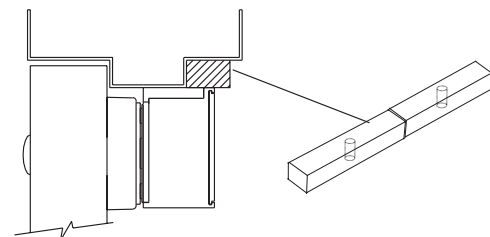
### M420P/M422P

- Magnetic Bond Sensor (MBS) monitors the strength of the bond between the lock and armature so you know the door is secure
- Door Position Switch (DPS) monitors whether the door is open or closed
- Relock Time Delay (RTD) provides a relock delay that is adjustable from 0.5 to 30 seconds
- Optional accessories (P models only)
  - ATS/LED Combines anti-tamper switch (ATS) with magnetic bond sensor in one kit.
    - ATS provides an indication that the cover of the magnet is securely fastened to the lock and that the on board circuitry is secure
    - Magnetic bond sensor indicator (LED) provides visual indication of magnetic bond at the lock

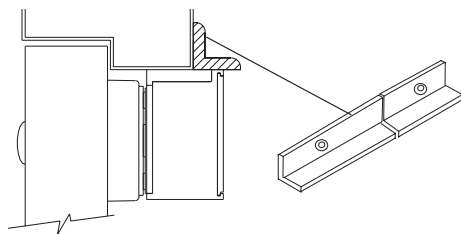
### Optional accessories (for all)

- Herculite door bracket kit
- Top jamb (inswinging doors) kit
- Double door connector kit (converts two single magnetic locks to a double)

### Filler Plate



### Angle Bracket



## M420/M422 electromagnetic lock specifications

Specification	M420/M420P	M422/M422P
Holding force	meets or exceeds BHMA standard of 500 lbs	meets or exceeds BHMA standard of 500 lbs
Input voltage (auto selected)	12/24 VDC	12/24 VDC
Current draw (amps standard unit)	.75A @ 12 VDC .38A @ 24 VDC	1.5A @ 12 VDC .76A @ 24 VDC
Automatic dual voltage	12/24 VDC	12/24 VDC
Height	2 1/2"	2 1/2"
Length	9"	18 1/16"
Depth	1 3/8"	1 3/8"
Weight (approximate)	6 lbs	12 lbs
Certifications	UL 1034, UL 10C, ANSI/BHMA156.23, cUL, CSFM	UL 1034, UL 10C, ANSI/BHMA156.23, cUL, CSFM
Temperature	0° to 49°C (32° to 120° F)	0° to 49°C (32° to 120° F)
Wire gauge	14-22 AWG	14-22 AWG

## Filler plates and angle brackets specifications

Length	9"
--------	----

### Filler plates

Width x Height	Plate no.
1 1/4" x 1/8"	4201F
1 1/4" x 1/4"	4202F
1 1/4" x 3/8"	4203F
1 1/4" x 1/2"	4204F
1 1/4" x 5/8"	4205F
3/4" x 1/2"	4206F
3/4" x 5/8"	4207F
3/4" x 3/4"	4208F

### Angle brackets

Width x Height	Bracket no.
1" x 1"	4201A
1 1/2" x 1"	4202A
1 1/2" x 1 1/2"	4203A
1 1/2" x 2"	4204A
1 1/2" x 2 1/2"	4205A

Allegion, the Allegion logo, Schlage, and the Schlage logo are trademarks of Allegion plc, its subsidiaries and/or affiliates in the United States and other countries. All other trademarks are the property of their respective owners.

## About Allegion

Allegion (NYSE: ALLE) is a global pioneer in safety and security, with leading brands like CISA®, Interflex®, LCN®, Schlage® and Von Duprin®. Focusing on security around the door and adjacent areas, Allegion produces a range of solutions for homes, businesses, schools and other institutions. Allegion is a \$2 billion company, with products sold in almost 130 countries. For more, visit [www.allegion.com](http://www.allegion.com).