

# 700S | 800S

## S Series: Schlage C Keyway Deadbolt Door & Drawer Cabinet Locks



**ANSI/BHMA Grade 1**  
**E07121 | E07041**  
**Woodwork Institute (WI)**  
**acknowledged product**

### SPECIFICATIONS

**Keying:** Can be keyed together with other Schlage C Keyway locks

**Rekeyable:** Easily rekeyable via set screw cylinder release mechanism

**ANSI/BHMA:** Passed ANSI/BHMA A156.11 Grade 1 performance requirements. Equivalent to E07121 (700S) / E07041 (800S).

**US Patent Nos:** 4,899,563; 4,920,774

**Standard function:** Key removable in locked or unlocked position. Standard function locks are non-handed.

**Key-retaining:** Key removable in locked position only. Specify handing (KL/KR for doors or KI/KV for drawers) when ordering.

**Body:** Zinc die cast

**Cylinder:** Will accept other manufacturer's Schlage compatible key-in-knob cylinders

**Cylinder length:** 1-1/8" or 1-3/8"

**Barrel diameter:** 1-1/8"

**Finish:** 26D, US3, 10B

**Packaged:** Packed 10 per box

### KEYING INFORMATION

**Keyway:** Schlage C keyway

**Keys:** Includes 2 keys per lock

**Cylinder:** Solid brass, pin tumbler

**Stock keying:** KD/KA - 5 pin standard

**Stock KA#:** 101, 102, O-Bit

**Masterkeying:** 6-pin standard

**Grand masterkeying:** Available

**Keyblank 5-pin:** KBSC-5

**Keyblank 6-pin:** KBSC-6

### INCLUDED ACCESSORIES

**For 1-1/8" barrel length locks:**

10-350 plastic spacers (qty 2)

10-054 1/4" plastic bar strike

10-055 1/2" plastic bar strike

**For 1-3/8" barrel length locks:**

10-054 1/4" plastic bar strike

### OPTIONAL ACCESSORIES

**Spacers:** 10-348 (1/4" thick), 10-349 (1/2" thick), 10-350 (1/8" thick)

**Strikes:** 10-052, 10-056, 10-057, 10-058, 12-2, 12-3, 12-4

**Trim collar:** TR78

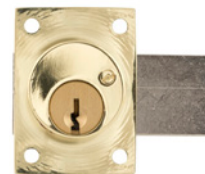
**Through-bolt hardware:** ETS1 through-bolt plate, ETS1-PL trim pull and ETST1 template

## 700S

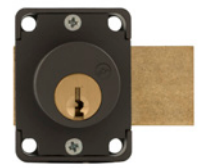
**Function:** Cabinet door lock  
ANSI/BHMA No.: E07121



US26D finish



US3 finish



US10B finish

## 800S

**Function:** Drawer lock  
ANSI/BHMA No.: E07041



US26D finish

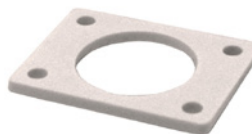


US3 finish



US10B finish

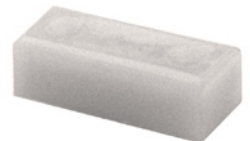
### INCLUDED ACCESSORIES



**10-350 internal spacers**  
For a flush fit on varying material thicknesses



**10-054 bar strike**  
1/4" plastic bar strike



**10-055 bar strike**  
1/2" plastic bar strike



**WARNING:** This product can expose you to chemicals including chromium, which is known to the State of California to cause cancer and birth defects or other reproductive harm. For more information go to [www.P65Warnings.ca.gov](http://www.P65Warnings.ca.gov).



**OLYMPUS<sup>®</sup>**  
**LOCK**  
INC

# 700S | 800S

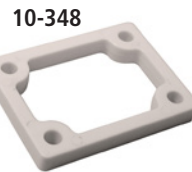
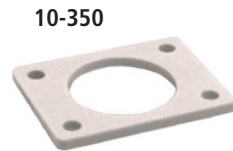
ANSI/BHMA Grade 1  
E07121 | E07041

## S Series: Schlage C Keyway Deadbolt Door & Drawer Cabinet Locks

**OPTIONAL ACCESSORIES** - See our website for a complete list of optional components.

### Internal Plastic Spacers

- 10-350 1/8" thick plastic spacers
- 10-348 1/4" thick plastic spacers
- 10-349 1/2" thick plastic spacers



### Strikes

- Plastic bar strikes: 10-054, 10-055, 10-057, 10-058. Metal strikes: 10-052, 10-056 12-1, 12-2, 12-3, 12-4

### Trim Ring

- TR78 trim ring

### Through-Bolt Mounting Plate

External metal 1/8" or 1/4" through-bolt plate allows for secure and attractive flush mounting of the cabinet lock face. Available in US3 or US26D finish.

- ETS1-125 through-bolt plate, 1/8" thick
- ETS1-250 through-bolt plate, 1/4" thick

ETS1  
Through-bolt plate

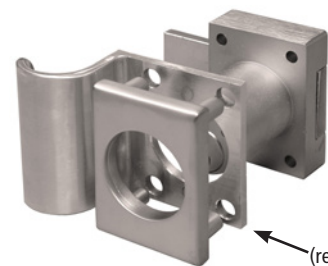


ETST1  
Through-bolt plate  
template



U.S. Patent No. D490,686

ETS1-PL  
Through-bolt pull



ETS1-PL  
(requires use of  
ETS1)

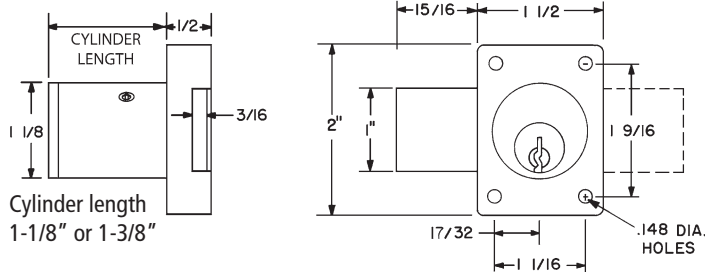
### Through-Bolt Mounting Plate Template

Allows for proper mounting hole placement of through-bolt plate. Can be used as a 1/8" shim spacer. Available in US3 and US26D finish.

- ETST2 through-bolt plate template

## DIMENSIONS

### 700S Cabinet Door Lock



### 800S Drawer Lock

