

700S | 800S

S Series: Schlage C Keyway Deadbolt Door & Drawer Cabinet Locks



ANSI/BHMA Grade 1
E07121 | E07041
Woodwork Institute (WI)
acknowledged product

SPECIFICATIONS

Keying: Can be keyed together with other Schlage C Keyway locks

Rekeyable: Easily rekeyable via set screw cylinder release mechanism

ANSI/BHMA: Passed ANSI/BHMA A156.11 Grade 1 performance requirements. Equivalent to E07121 (700S) / E07041 (800S).

US Patent Nos: 4,899,563; 4,920,774

Standard function: Key removable in locked or unlocked position. Standard function locks are non-handed.

Key-retaining: Key removable in locked position only. Specify handing (KL/KR for doors or KI/KV for drawers) when ordering.

Body: Zinc die cast

Cylinder: Will accept other manufacturer's Schlage compatible key-in-knob cylinders

Cylinder length: 1-1/8" or 1-3/8"

Barrel diameter: 1-1/8"

Finish: 26D, US3, 10B

Packaged: Packed 10 per box

KEYING INFORMATION

Keyway: Schlage C keyway

Keys: Includes 2 keys per lock

Cylinder: Solid brass, pin tumbler

Stock keying: KD/KA - 5 pin standard

Stock KA#: 101, 102, O-Bit

Masterkeying: 6-pin standard

Grand masterkeying: Available

Keyblank 5-pin: KBSC-5

Keyblank 6-pin: KBSC-6

INCLUDED ACCESSORIES

For 1-1/8" barrel length locks:

10-350 plastic spacers (qty 2)

10-054 1/4" plastic bar strike

10-055 1/2" plastic bar strike

For 1-3/8" barrel length locks:

10-054 1/4" plastic bar strike

OPTIONAL ACCESSORIES

Spacers: 10-348 (1/4" thick), 10-349 (1/2" thick), 10-350 (1/8" thick)

Strikes: 10-052, 10-056, 10-057, 10-058, 12-2, 12-3, 12-4

Trim collar: TR78

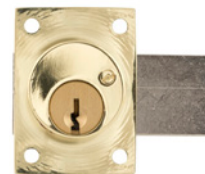
Through-bolt hardware: ETS1 through-bolt plate, ETS1-PL trim pull and ETST1 template

700S

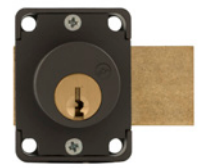
Function: Cabinet door lock
ANSI/BHMA No.: E07121



US26D finish



US3 finish



US10B finish

800S

Function: Drawer lock
ANSI/BHMA No.: E07041



US26D finish

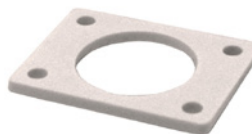


US3 finish



US10B finish

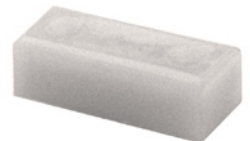
INCLUDED ACCESSORIES



10-350 internal spacers
For a flush fit on varying material thicknesses



10-054 bar strike
1/4" plastic bar strike



10-055 bar strike
1/2" plastic bar strike



WARNING: This product can expose you to chemicals including chromium, which is known to the State of California to cause cancer and birth defects or other reproductive harm. For more information go to www.P65Warnings.ca.gov.



OLYMPUS[®]
LOCK
INC

700S | 800S

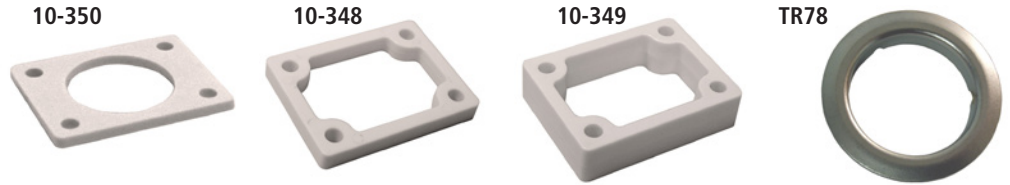
ANSI/BHMA Grade 1
E07121 | E07041

S Series: Schlage C Keyway Deadbolt Door & Drawer Cabinet Locks

OPTIONAL ACCESSORIES - See our website for a complete list of optional components.

Internal Plastic Spacers

- 10-350 1/8" thick plastic spacers
- 10-348 1/4" thick plastic spacers
- 10-349 1/2" thick plastic spacers



Strikes

- Plastic bar strikes: 10-054, 10-055, 10-057, 10-058. Metal strikes: 10-052, 10-056 12-1, 12-2, 12-3, 12-4

Trim Ring

- TR78 trim ring

Through-Bolt Mounting Plate

External metal 1/8" or 1/4" through-bolt plate allows for secure and attractive flush mounting of the cabinet lock face. Available in US3 or US26D finish.

- ETS1-125 through-bolt plate, 1/8" thick
- ETS1-250 through-bolt plate, 1/4" thick

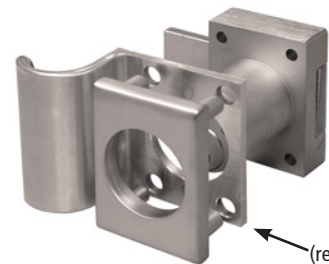
ETS1
Through-bolt plate



ETST1
Through-bolt plate
template



ETS1-PL
Through-bolt pull



ETS1-PL
(requires use of
ETS1)

Through-Bolt Mounting Plate Template

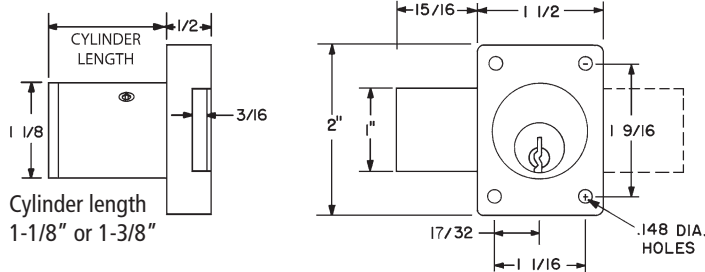
Allows for proper mounting hole placement of through-bolt plate. Can be used as a 1/8" shim spacer. Available in US3 and US26D finish.

- ETST2 through-bolt plate template

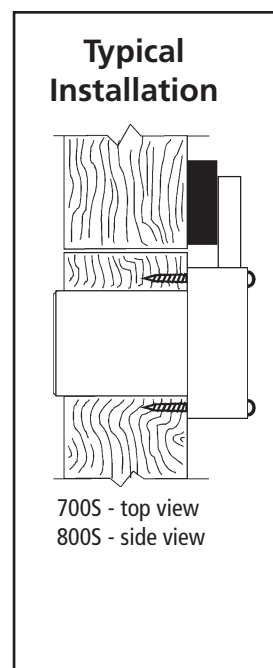
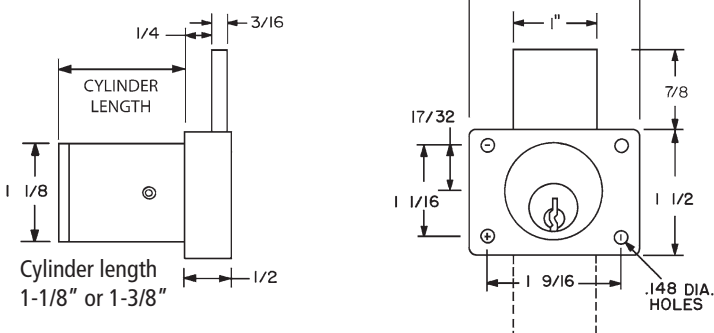
U.S. Patent No. D490,686

DIMENSIONS

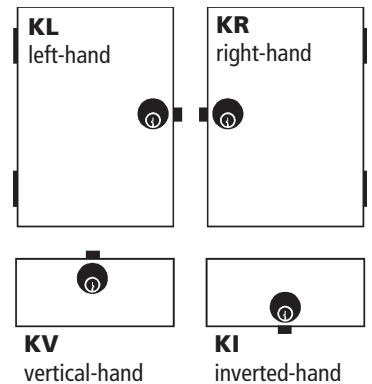
700S Cabinet Door Lock



800S Drawer Lock



Key-retaining* Handing Chart



* Handing information is only required for key-retaining function. Standard function locks are non-handed.