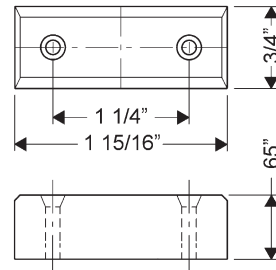


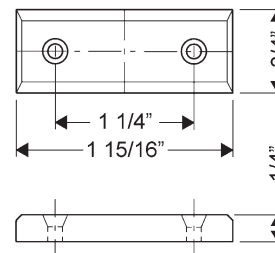
Special note for key-retaining locks only:

Cycle lock so that the bolt is in the "locked" position before inserting the core.

- Included Accessories:**
- 3 10-350 plastic spacers
 - 1 10-054 1/4" plastic bar strike
 - 1 10-055 1/2" plastic bar strike
 - 1 7788-PA-D plastic thumbturn
 - 4 lock mounting screws

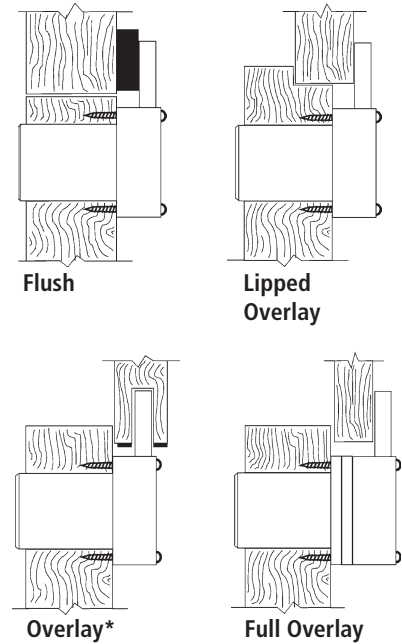


10-058 - 1/2" bar strike



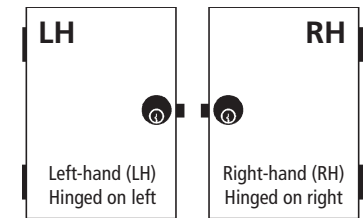
10-054 - 1/4" bar strike

Typical Installation



*Overlay installation is not recommended for particleboard.

Installation/handling for key-retaining option



Spacer options Note: use of spacers and strikes depends on application and material thickness.

