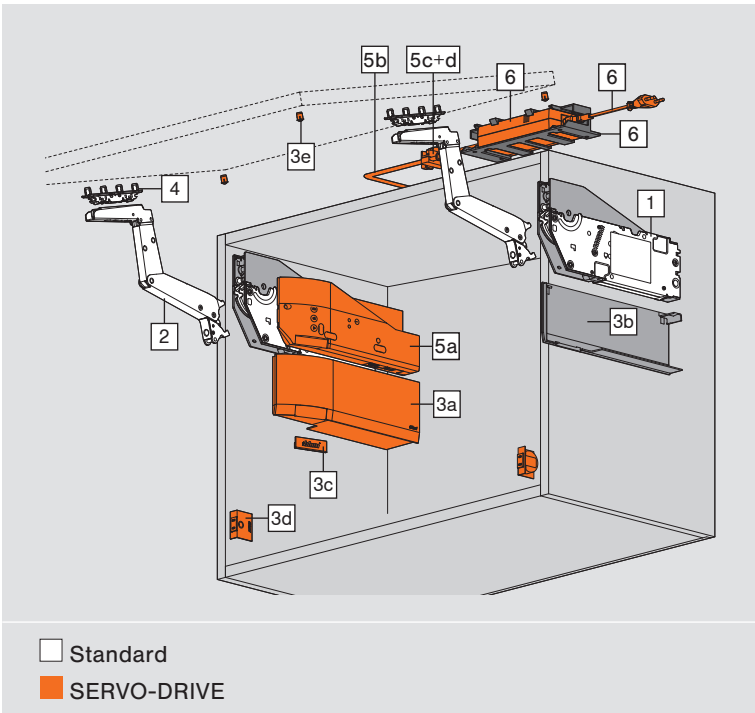


AVENTOS HS top





- Ideal for large, one-part fronts
- Cabinet height 350-800 mm
- Cabinet width up to 1800 mm
- Internal depth of at least 264 mm
- Integrated BLUMOTION setting
- SERVO-DRIVE electrical motion support system
- Light operating forces
- Variable stop
- Standardized position of the lift mechanism and front fixing bracket
- Symmetrical lift mechanism and lever arm
- Tool-free assembly
- Two lift mechanism fixing methods
- 3-dimensional adjustment of the front

Ordering information

Note

We recommend the more powerful lift mechanism for applications in overlapping ranges. A trial application is recommended when you are in a borderline area of the individual lift mechanism.

The front weight (FG) can be increased by 50% if you use a third lift mechanism. We recommend a third lift mechanism for wide cabinets. This will prevent the front from sagging when open.

1	<input type="checkbox"/>	<input checked="" type="checkbox"/>	Lift mechanism set
	Fixing with pre-mounted system screws		
	KH (mm)	FG (kg)	
	350-450	2.00-11.50	22S2210
	450-540	2.50-12.50	22S2510
	480-660	2.75-15.25	22S2510
650-800	3.50-18.50	22S2810	
FG Front weight including double handle weight			
KH Cabinet height			
Consisting of:			
1	2 x	Symmetrical lift mechanism Incl. pre-mounted system screws	

1	<input type="checkbox"/>	<input checked="" type="checkbox"/>	Lift mechanism set
	Fixing with chipboard screws with positioning system		
	KH (mm)	FG (kg)	
	350-450	2.00-11.50	22S2200
	450-540	2.50-12.50	22S2500
	480-660	2.75-15.25	22S2500
650-800	3.50-18.50	22S2800	
FG Front weight including double handle weight			
KH Cabinet height			
Consisting of:			
1	2 x	Symmetrical lift mechanism Incl. positioning system	
-	8 x	Chipboard screws Ø 4 x 35 mm	

Ordering information

2		Lever arm set		
	Colour	Material		
	NI	Steel		22S3500

Consisting of:

2	2 x	Symmetrical lever arm
---	-----	-----------------------

3		Cover cap set		
	Colour	Material		
	SW, HGR, TGR	K		22.8000.NA

Consisting of:

-	1 x	Cover cap left
3b	1 x	Cover cap right
3c	2 x	Branding element, embossed with Blum logo
		IN-G

3		Cover cap set for SERVO-DRIVE		
	Colour	Material		
	SW, HGR, TGR	K		23.8000.NA

Consisting of:

3a	1 x	SERVO-DRIVE cover cap left
3b	1 x	Cover cap right
3c	2 x	Branding element, embossed with Blum logo
		IN-G
3d	2 x	SERVO-DRIVE switch
3e	6 x	Blum distance bumper Ø 5 mm

4		Front fixing bracket set		
	Version	Fixing method		
	Wooden fronts and wide aluminium frames	Screw-on ¹		20S4200
	Narrow aluminium frames	Screw-on ²		20S4200A

Consisting of:

4	2 x	Front fixing bracket
---	-----	----------------------

¹ Use 4 chipboard screws (609.1x00) per side for wooden fronts. Use 4 countersunk self-tapping screws (660.0950) per side for wide aluminium frames.

² Incl. 8 x countersunk self-tapping screws – 660.0950

-		Front fixing bracket		
	Version	Fixing method		
	Thin fronts	EXPANDO T ² x		20S42T1

EXPANDO T suitable for thin fronts – see page 54

5		SERVO-DRIVE set		
	Colour	Material		
	TGR	K		23.A000

Consisting of:

5a	1 x	Drive unit
5b	1 x	SERVO-DRIVE distribution cable, 1500 mm
5c	1 x	Connecting node
5d	2 x	Cable end protector

For three lift mechanisms or more, we recommend two synchronized drive units

We recommend one drive unit per set for connected fronts.

6		SERVO-DRIVE power supply unit and accessories		
				See page 56

Optional

3c		Branding element		
	Material	Colour		
	K	SW-M, TGR	IN-G	
	Printed *	2 x	ABD.1000.BL ABD.1009.BL	
	Embossed *	2 x	ABD.1000.BT ABD.1009.BT	
	Plain	2 x	ABD.1000 ABD.1009	

* With Blum logo

From 1000 pcs:

Customized, printed branding element

From 5000 pcs:

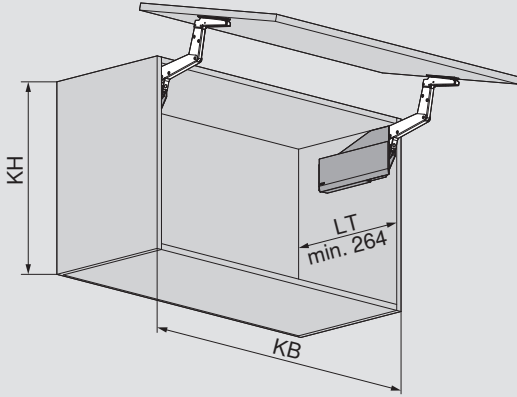
Customized, embossed branding element

Colours and material

Name	
SW	Silk white
HGR	Light grey
TGR	Dark grey
SW-M	Silk white matt
NI	Nickel plated
IN-G	In-mould brushed stainless steel
K	Nylon

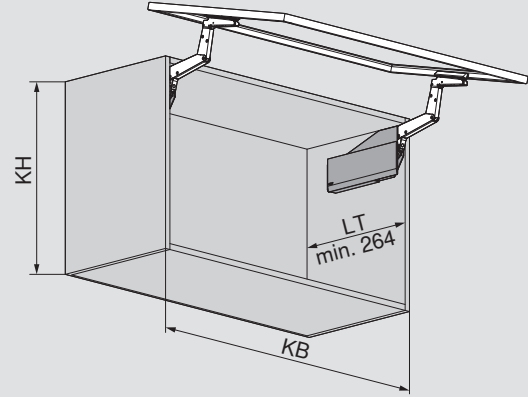
Planning

Wooden fronts and wide aluminium frames



KB Cabinet width
KH Cabinet height
LT Internal cabinet depth

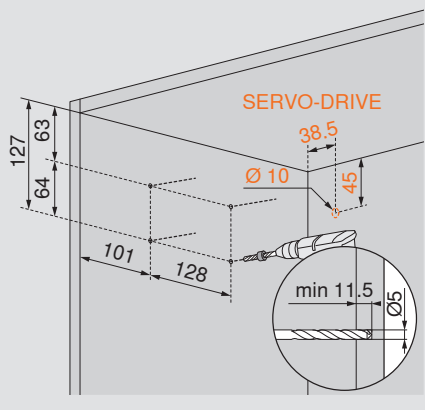
Narrow aluminium frames



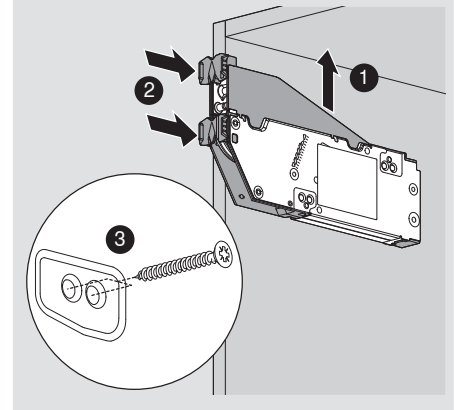
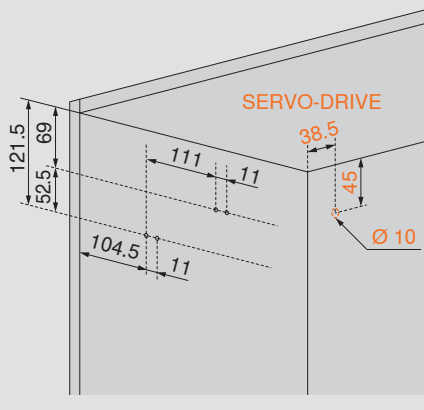
KB Cabinet width
KH Cabinet height
LT Internal cabinet depth

Drilling position

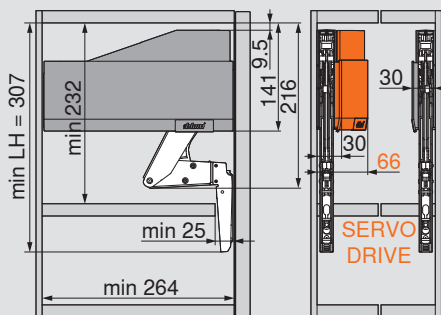
System screws



Chipboard screws incl. positioning system

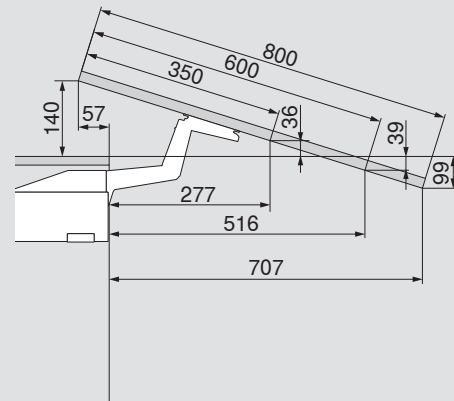


Space requirement

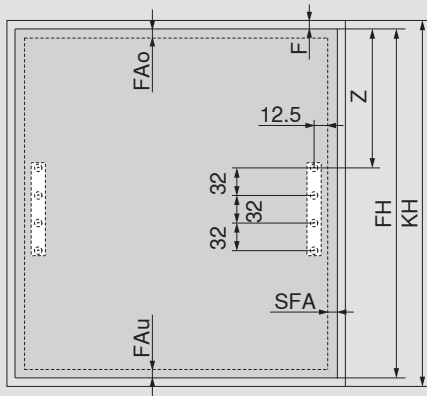


LH Internal cabinet height

Front setting



Dimensions depend on tilt adjustment

Planning
Front assembly
Wooden fronts and wide aluminium frames


FAo Upper front overlay

FAu Bottom front overlay

F Gap

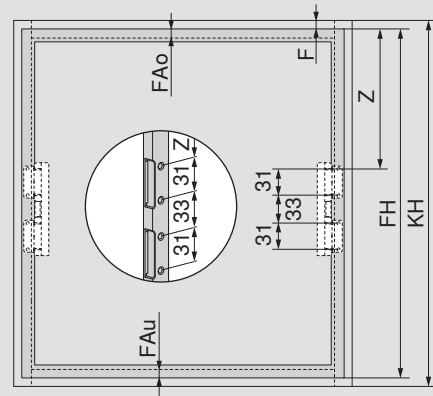
Z 195 + FAo

FH Front height

KH Cabinet height

SFA Side front overlay

Application against a wall: minimum 5 mm gap

Narrow aluminium frames


FAo Upper front overlay

FAu Bottom front overlay

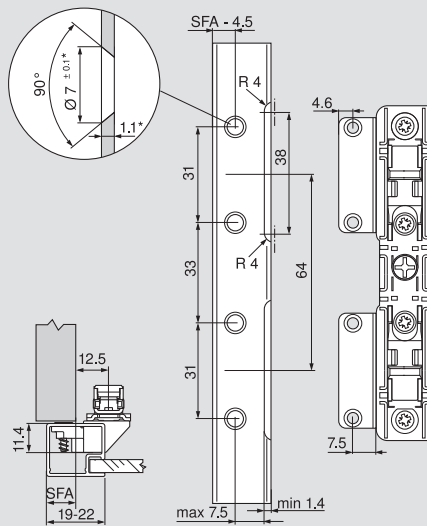
F Gap

Z 195.5 + FAo

FH Front height

KH Cabinet height

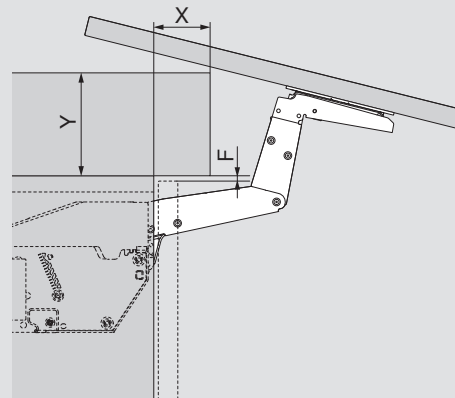
Application against a wall: minimum 5 mm gap

Narrow aluminium frames


For frame width 19 mm, an SFA of 11-18 mm is possible.

* When changing material thickness, adjust the assembly dimensions accordingly

SFA Side front overlay

Space requirement – cornice | crown moulding


F (mm)	3.0	2.0	1.5
X max. (mm)	31	29	27
Y max. (mm)	117	118	119
F Gap			



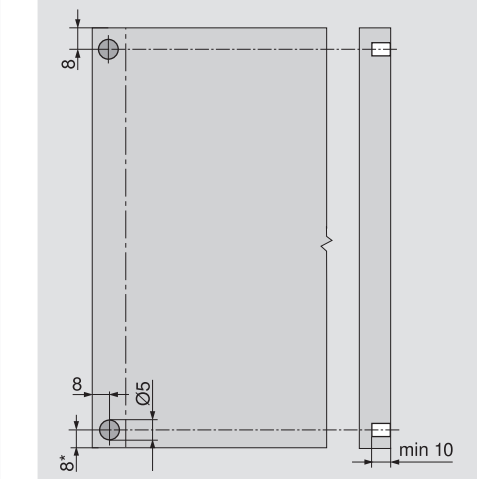
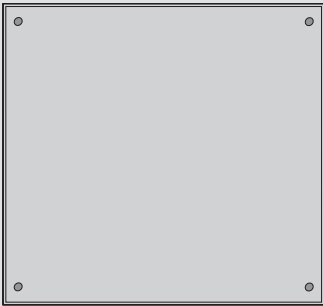
Find more information on assembly and adjustment of AVENTOS HS top at

www.blum.com/hstopassembly

SERVO-DRIVE for AVENTOS HS top

Planning

Blum distance bumper (SERVO-DRIVE application only)



Insert Blum distance bumper (do not glue)

Recommendation for aluminium frames

Drill hole into cabinet side for Blum distance bumper

A trial application must be carried out if fixed to the front

* From cabinet bottom edge for fronts that protrude below

SERVO-DRIVE switch

