

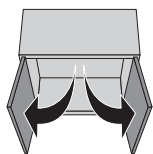
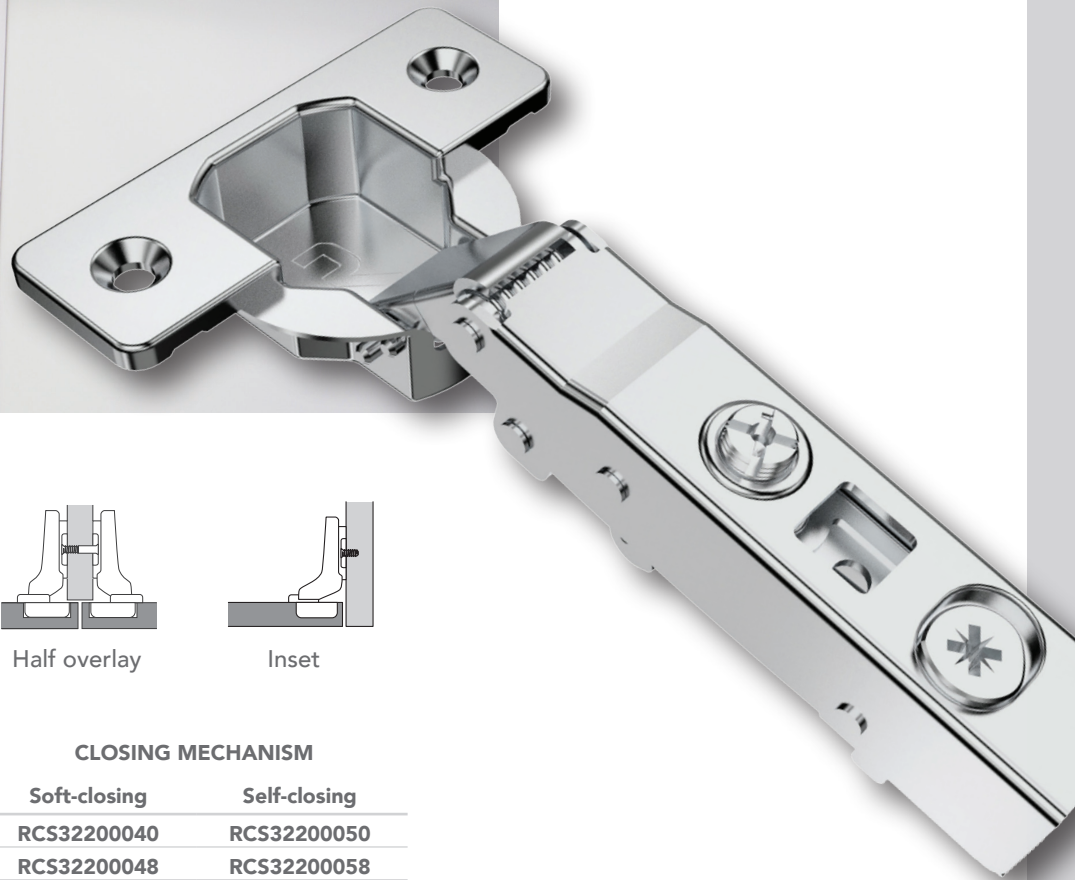
RCS 322

105° CONCEALED HINGES

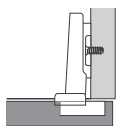
**IMPROVED FOR
KITCHEN CABINETS**

With its new and improved preset function, the RCS 322 hinge series now requires fewer adjustments for a faster installation.

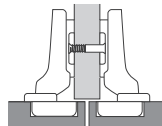
- Easy clip-on system
- 2-way cup for a controlled and smooth opening movement
- Easy 3-dimension adjustments (side, height, and depth)
- Universal and complete plate system
- KCMA certified



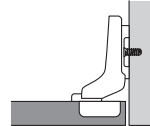
105°



Full overlay



Half overlay



Inset

CLOSING MECHANISM

Door position	Fixing type	Soft-closing	Self-closing
Full overlay	Screw-on	RCS32200040	RCS32200050
Full overlay	Dowel	RCS32200048	RCS32200058
Half overlay	Screw-on	RCS32200940	RCS32200950
Half overlay	Dowel	RCS32200948	RCS32200958
Inset	Screw-on	RCS32201740	RCS32201750
Inset	Dowel	RCS32201748	RCS32201758

Drilling Ø: 35 mm
Drilling depth: 11.5 mm
Door thickness: 14 to 22 mm



MOUNTING PLATES FOR RCS HINGES



REGULAR



Screw-on

Euro
screw-on

Expando
dowels

Height	Screw-on	Euro screw-on	Expando dowels
0 mm	RCS00100	RCS00200	RCS00700
2 mm*	RCS00120	RCS00220	RCS00702
4 mm	RCS00140	RCS00240	RCS00704



CAM HEIGHT ADJUSTMENT



Height

Screw-on

Euro
screw-on

Expando
dowels

Height	Screw-on	Euro screw-on	Expando dowels
0 mm	RCS00502	RCS00602	RCS00707
2 mm*	RCS00520	RCS00622	RCS00727
4 mm	RCS00540	RCS00642	RCS00747



SPECIAL 11.5 MM DOWEL



Height

Expando
dowels

Height	Expando dowels
0 mm	RCS01007
2 mm*	RCS01027
4 mm	RCS01047



FACE FRAME CAM ADJUSTMENT



Height

Screw-on

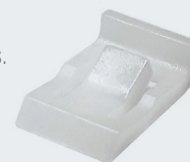
Height	Screw-on
0 mm	RCS00902
3 mm	RCS00930
6 mm	RCS00960

OPTIONAL ACCESSORIES

RCS HINGE ANGLE RESTRICTOR

89° angle restrictor compatible with Richelieu RCS hinges.

RCSR001P



RCS HINGE METAL COVER CAPS

Cover caps are designed to cover up the screws on our RCS hinge, providing a more elegant and finished look.

HINGE ARM COVER CAP
RCS2695180



HINGE CUP COVER CAP
RCS2696180



* We recommend using a 2 mm plate to obtain a standard overlay coverage (K=5) with 16 mm panel and a 0 mm plate with a 19 mm panel.

