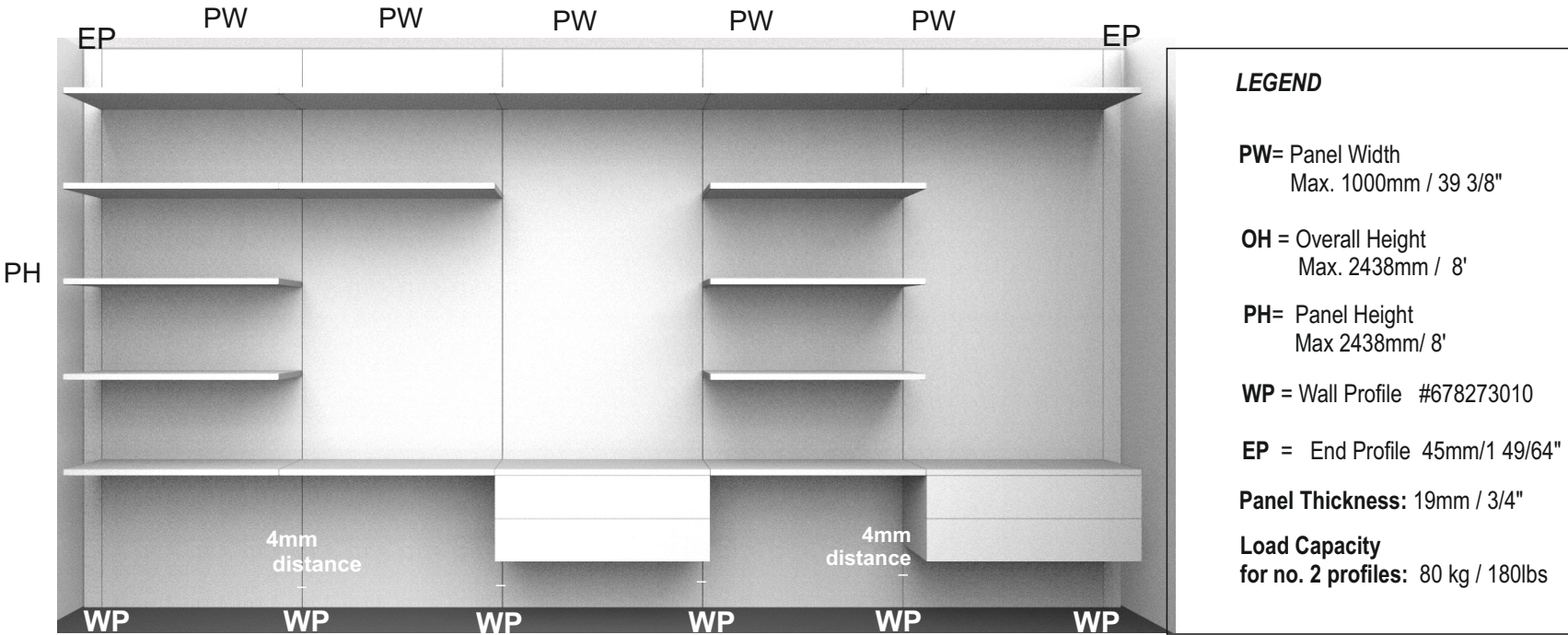


SINGLE WALL

OVERALL DIMENSIONS



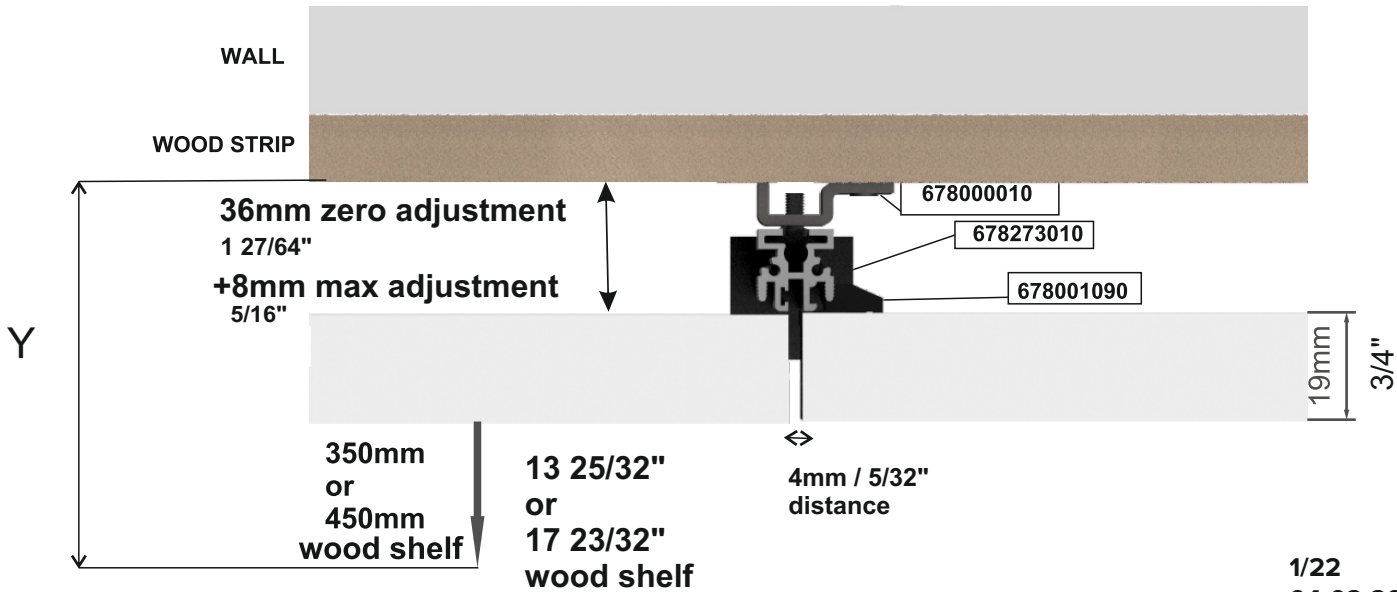
OVERALL DEPTH

Min and Max DEPTH (Y)
with min and max adjustment and
shelf depth available.

wood strips thickness = 19mm

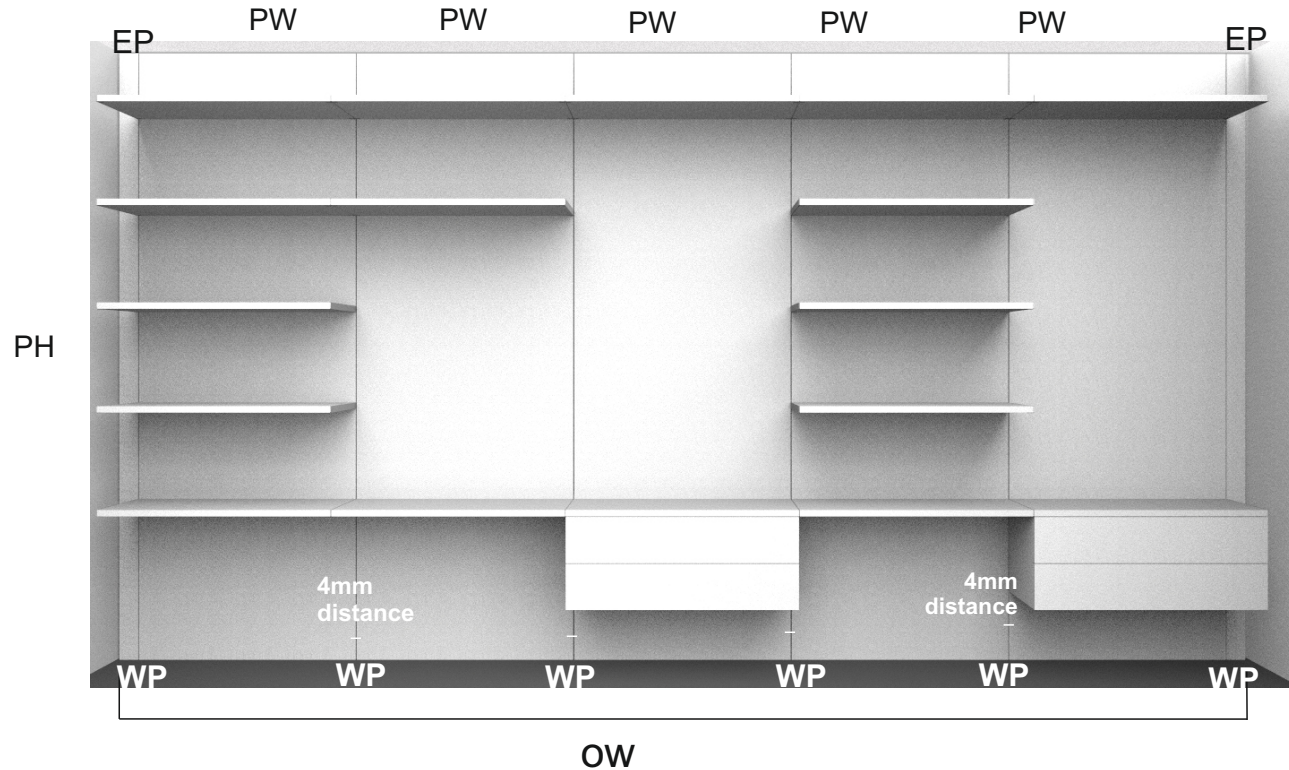
Y= min.405mm

Y= max. 513mm



SINGLE WALL

OVERALL WIDTH



LEGEND

PW= Panel Width
Max. 1000mm / 39 3/8"

OH = Overall Height
Max. 2438mm / 8'

PH= Panel Height
Max 2438mm/ 8'

WP = Wall Profile #678273010

EP = End Profile 45mm/1 49/64"

Panel Thickness: 19mm / 3/4"

Load Capacity
for no. 2 profiles: 80 kg / 180lbs

OW= Overall installation width required:

EP: end profile width 45mm / 1 49/64"

QWP: (quantity of WP-wall profiles)#678273010 to order = # of panels+1

4mm(5/32") : distance in between 2 wall panels

OW= 90mm +sum of all PW+ (4mmxQWP)

OW= 3 35/64" +sum of all PW+ (5/32" x QWP)

ELEMENTS MIN-MAX DIMENSIONS

**REAR PANEL,
SHELF and
CABINET
MUST HAVE SAME WIDTH**

REAR PANEL : Max. Width 1000mm / 39 3/8"
Max. Height 2438mm / 8'
Thickness 19mm / 3/4"

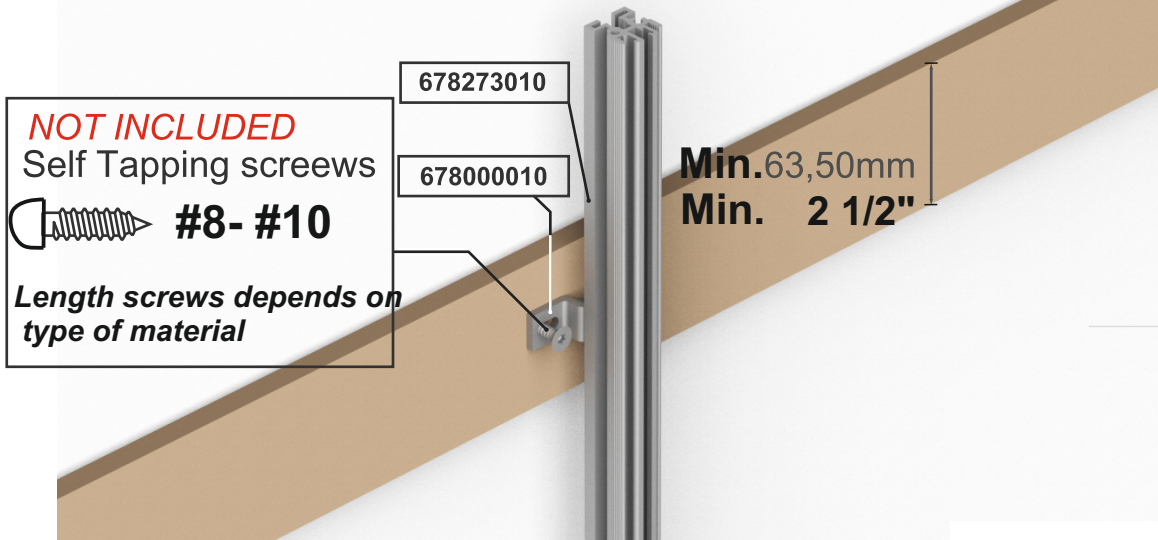
SHELF: Max. Width 1000mm / 39 3/8"
Depth: 350mm / 13 25/32" or 450mm / 17 23/32"
Thickness: 19mm / 3/4" or 25mm 63/64"

CABINET: Max. Width 1000mm / 39 3/8"
Depth: 350mm / 13 25/32" or 450mm / 17 23/32"

END GABLE: Max. Height 2438mm / 8'
Min Width: 45mm / 1 49/64"

WALL PREPARATION and WALL FIXING POSITION

FIXING DETAILS



Max. Panel dimensions:
Height: 2438mm / 8'
Width: 1000mm / 39 3/8"

Wood strips installation:

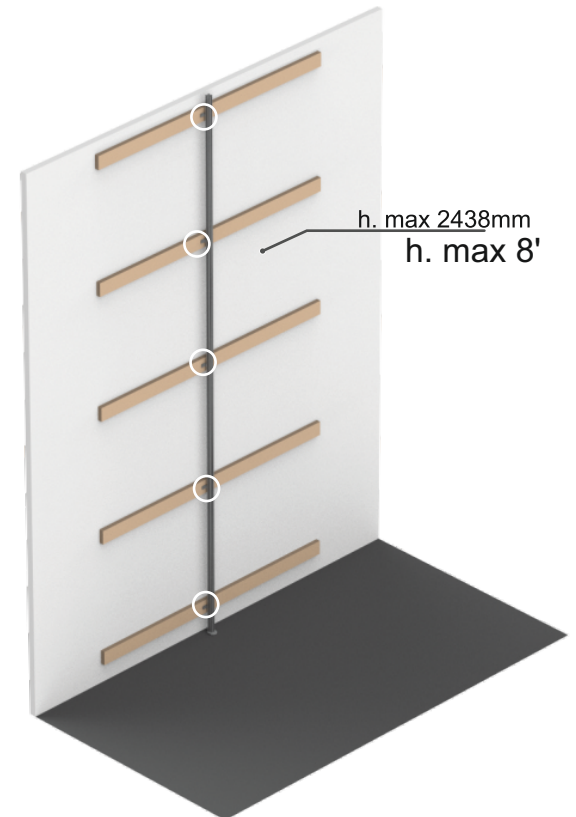
first strip: centered 50,80mm/ 2" lower than panel height
last strip: centered 152,40mm/ 6" higher than bottom panel
others strips: X= 500mm** / 19 11/16"

** dimension with 8' panels

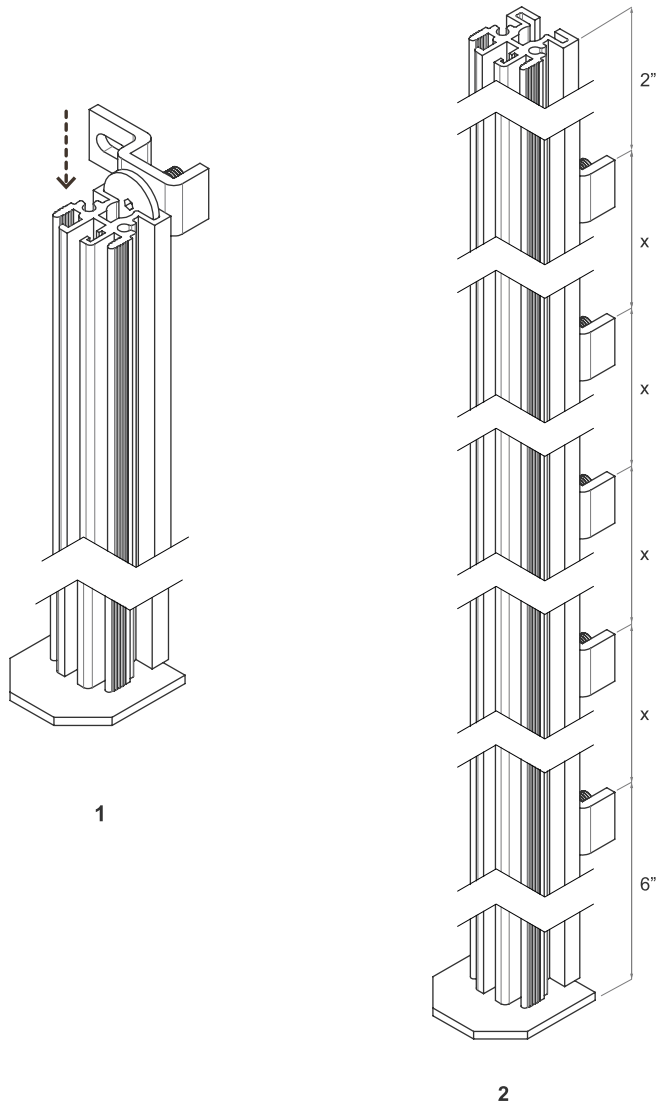
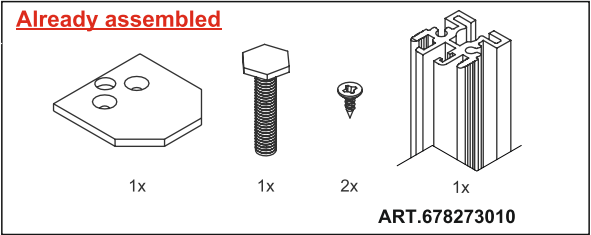
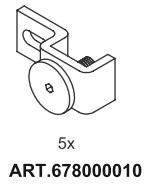
centered
50,80
2"



h. max 2438mm
h. max 8'



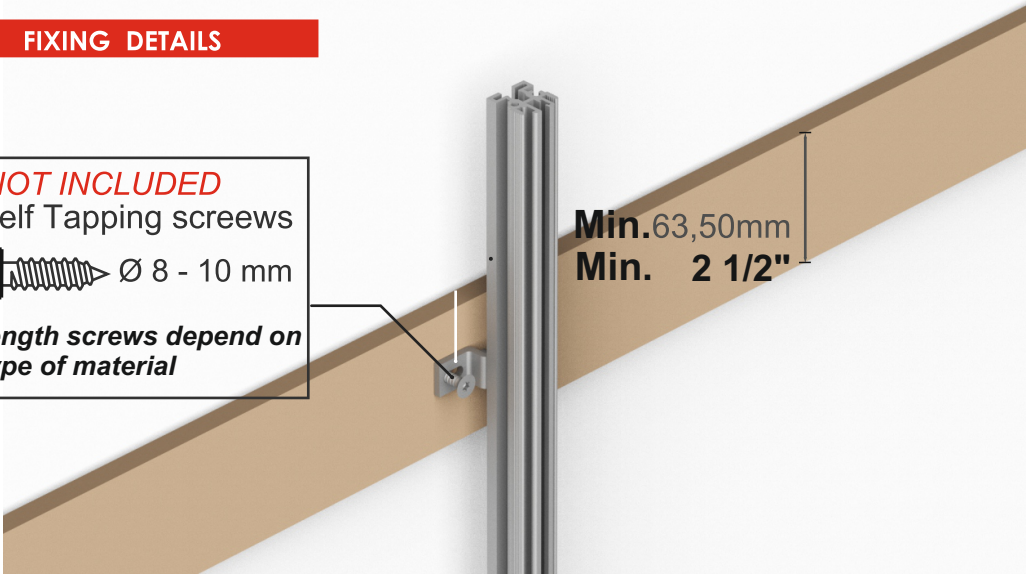
PROFIL PREPARATION



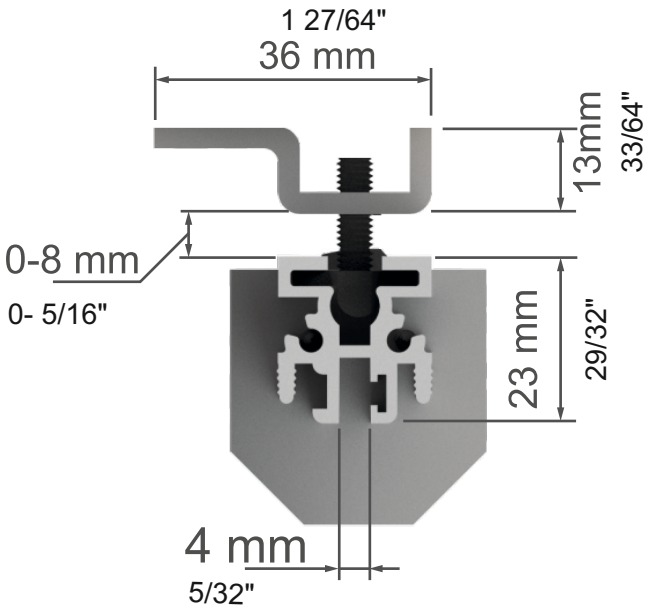
FIXING DETAILS

NOT INCLUDED
Self Tapping screws
Ø 8 - 10 mm
Length screws depend on
type of material

Min.63,50mm
Min. 2 1/2"



TOP VIEW DETAILS

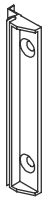


Bottom Shelf Positioning

Min Height
from Floor to underneath the shelf:
65mm / 2 9/16"




PANEL PREPARATION



ART. 678001090

10x



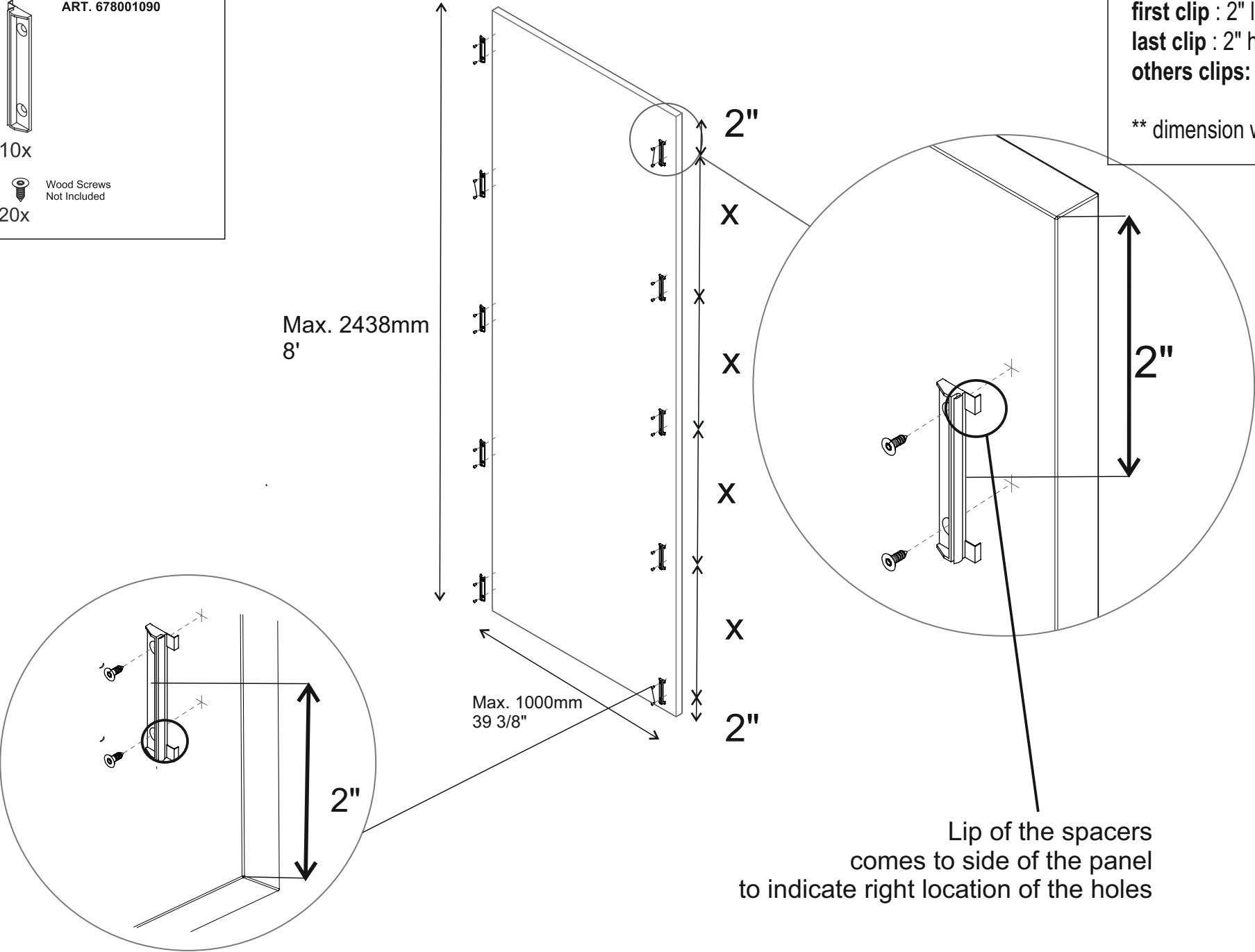
Wood Screws
Not Included

20x

Suggested Clip Position:
all dimensions: center of the clip.

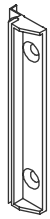
first clip : 2" lower than panel height
last clip : 2" higher than panel height
others clips: X= 584,2mm / 23" **

** dimension with 8' panel



END PROFILE

ART. 678001090

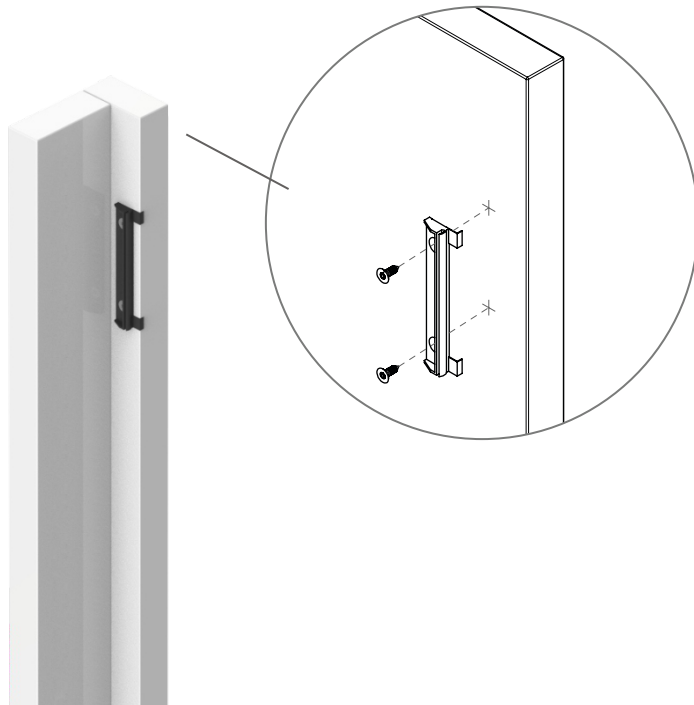


5x

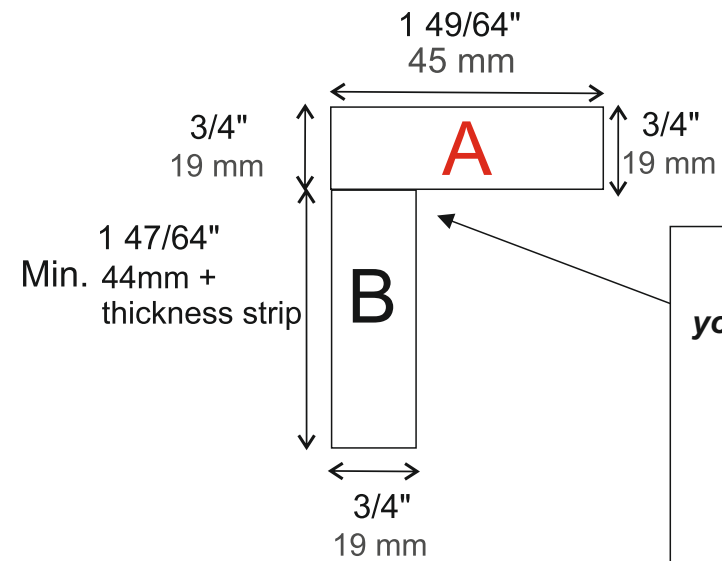


10x

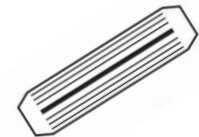
Wood Screws
Not Included



TOP VIEW

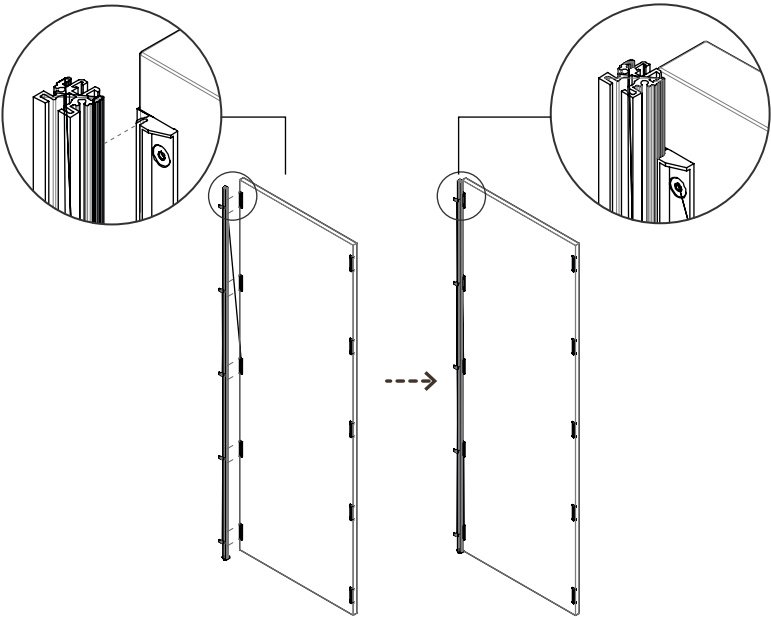


*To fix A with B element,
you can use the Wooden Dowels
(NOT INCLUDED)*

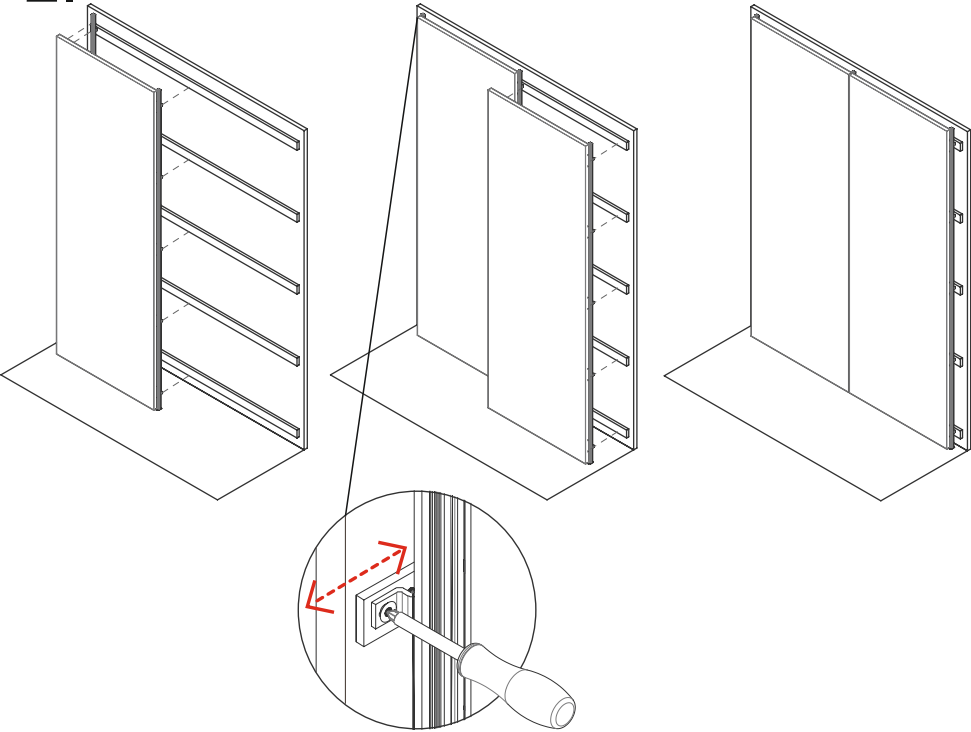


PROFIL -MOUNTING STEP-

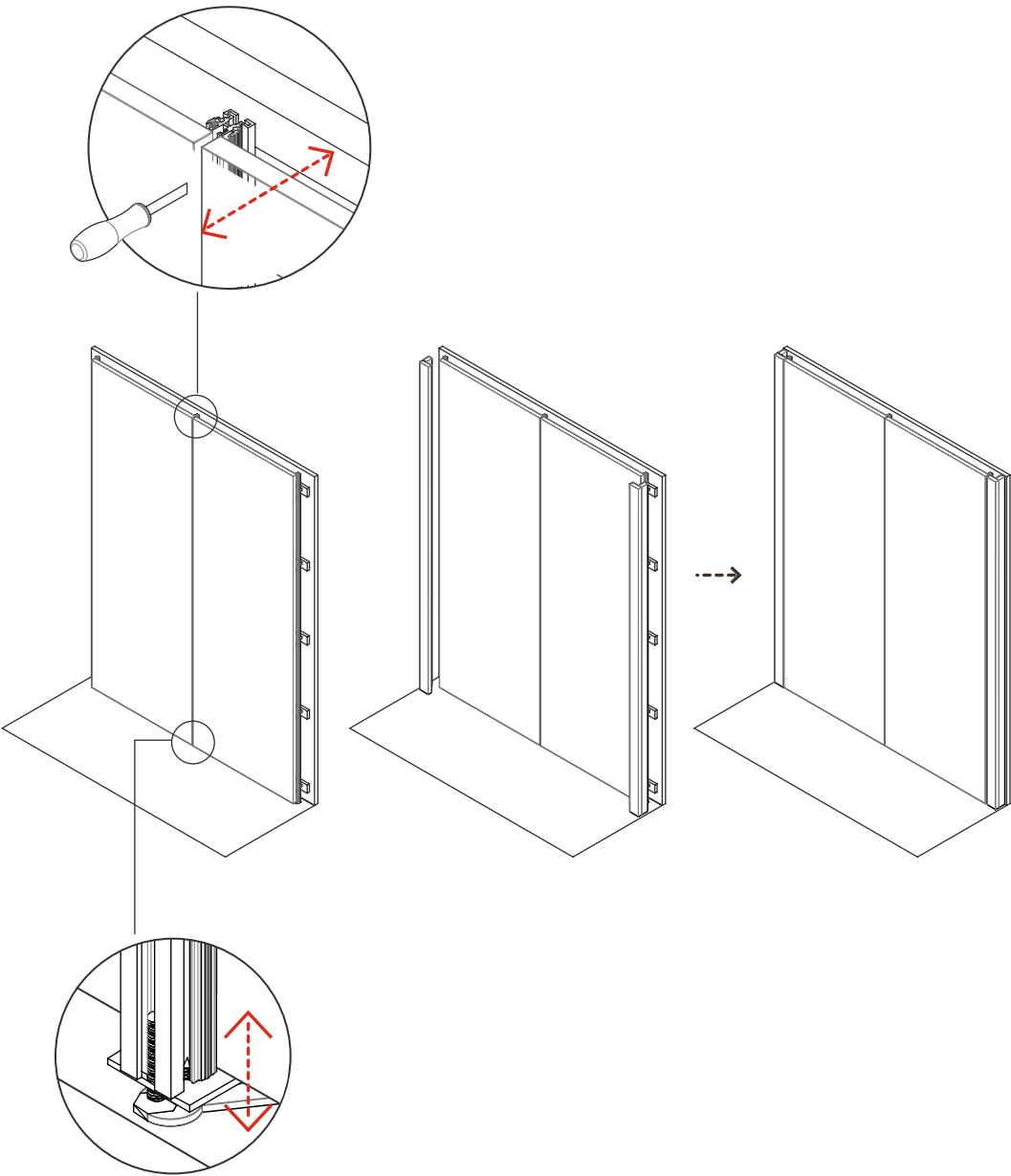
1.



2.

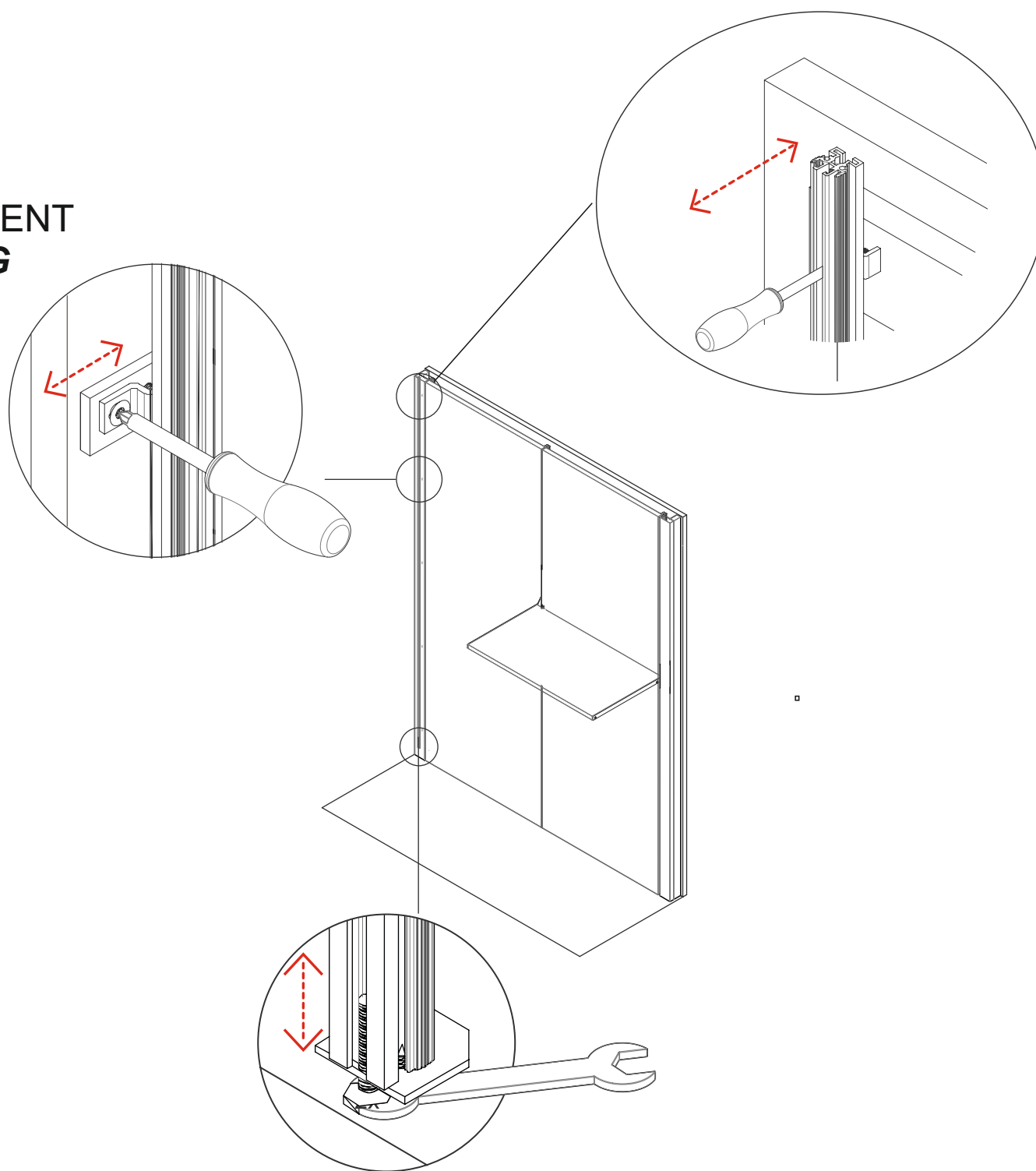


3.

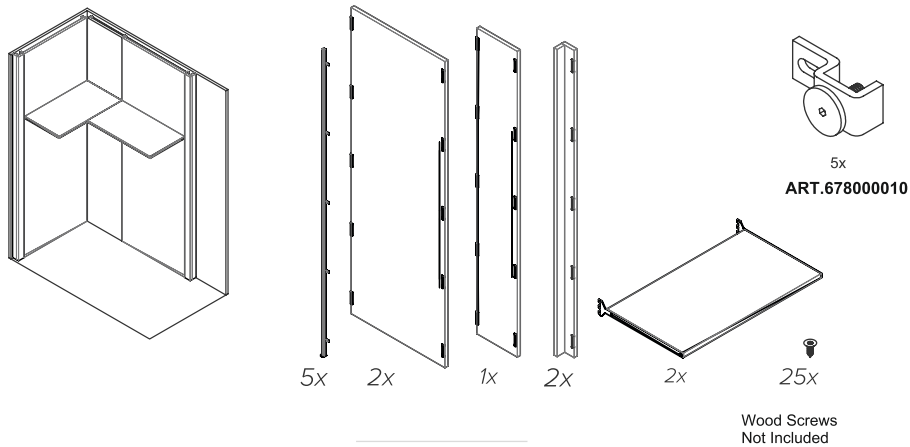


ADJUSTMENT STEPS

FOCUS ON
FINE 3D ADJUSTMENT
AFTER MOUNTING



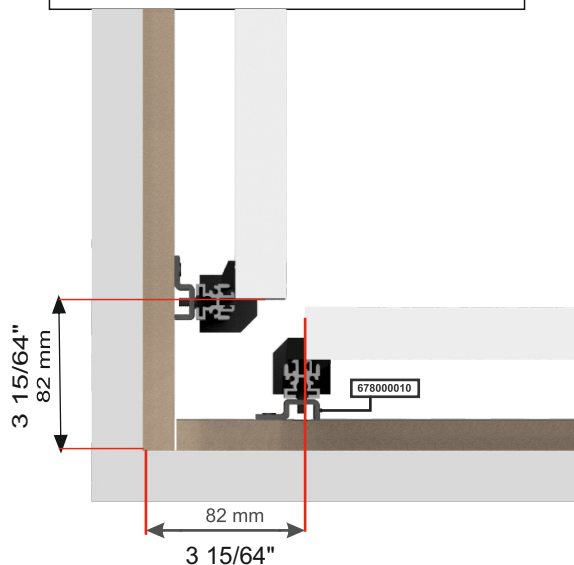
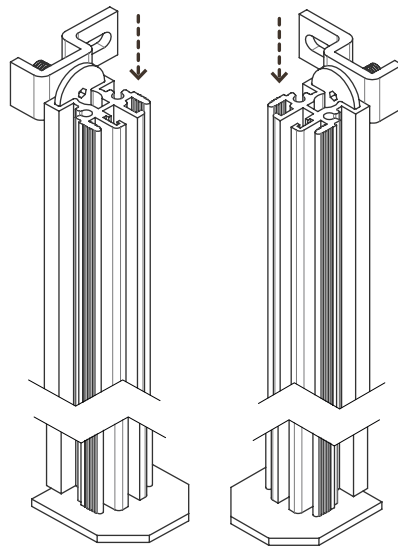
CORNER OPTION



Max. Panel dimensions:
Height: 2438mm / 8'
Width: 1000mm / 39 3/8"

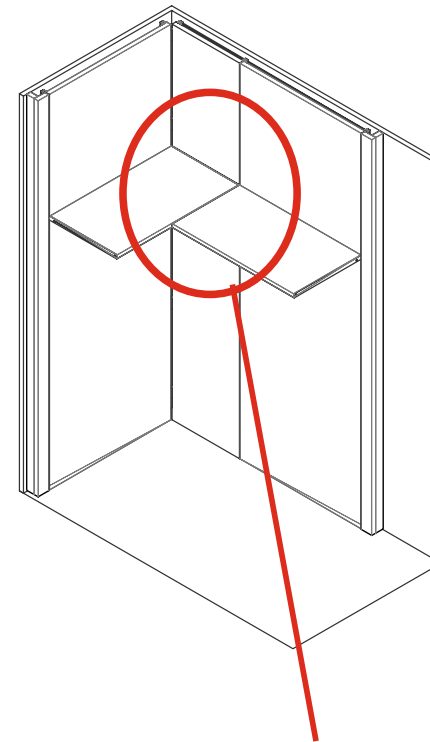
*** FIRST PANEL OF THE CORNER:**
450mm/ 17 23/32" WIDTH

Max. Shelf dimensions:
Depth: 350mm or 450mm
13 25/32" or 17 23/32"
Width: 1000mm/ 39 3/8"



CORNER OPTION

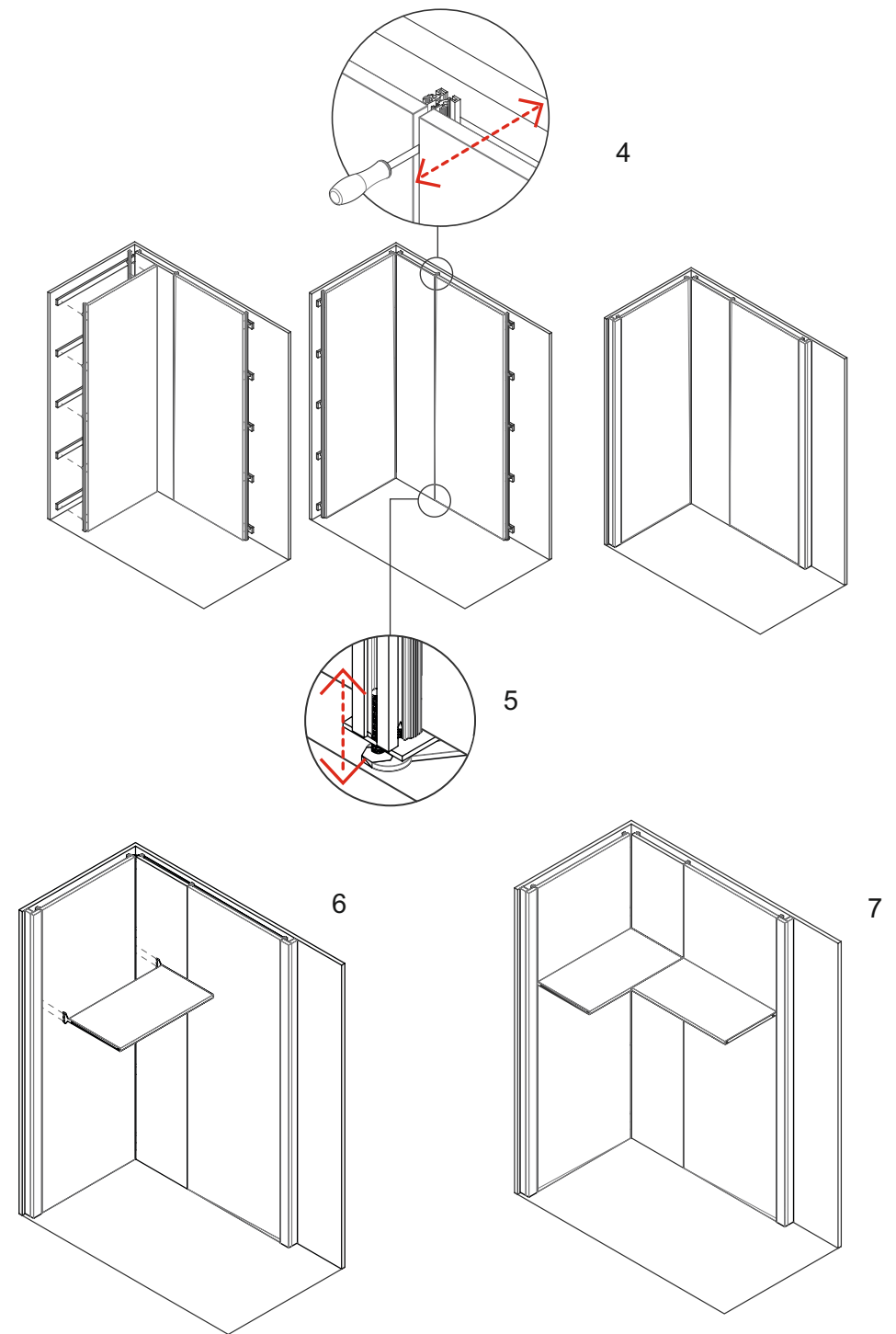
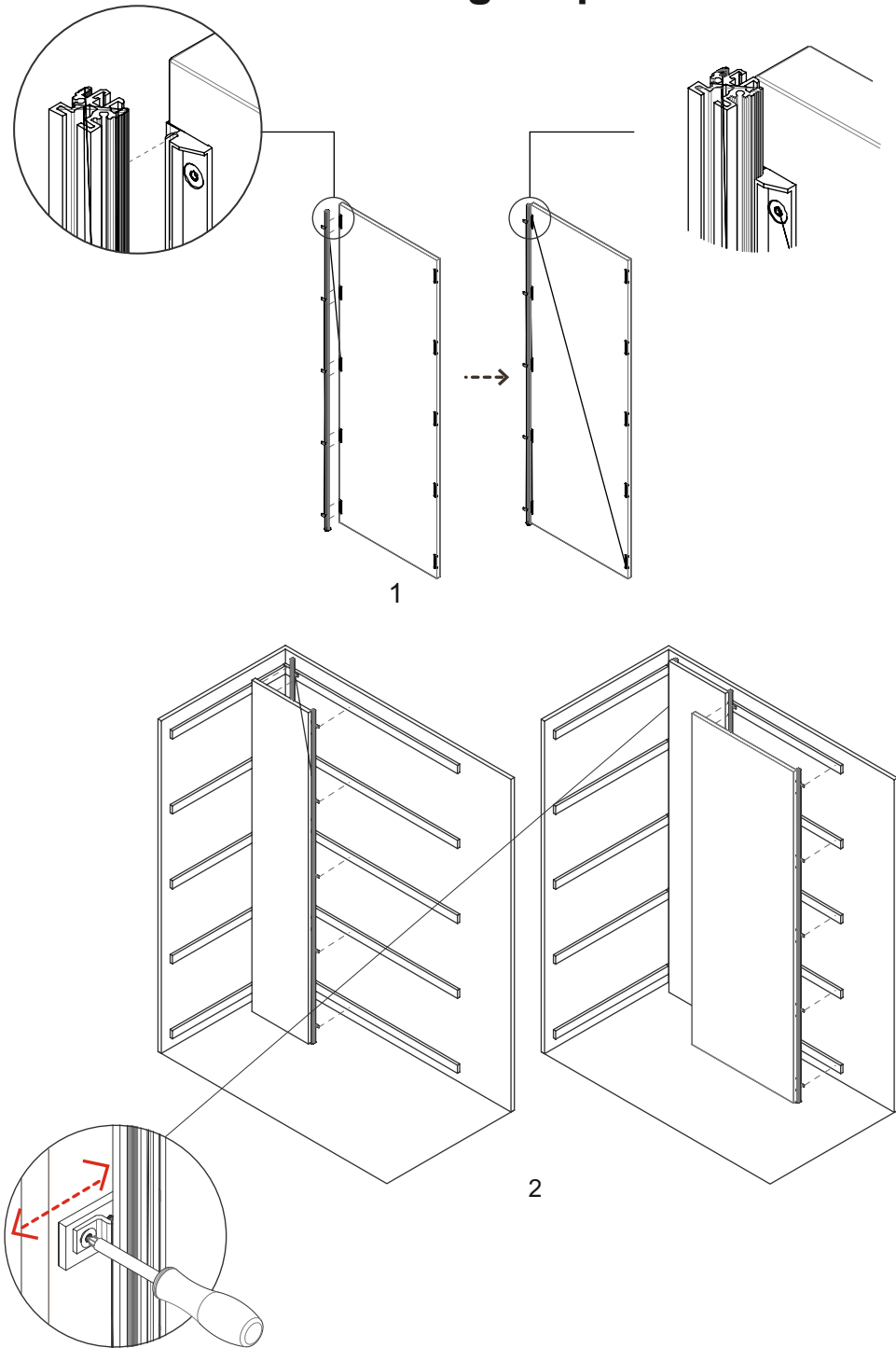
For bottom and top shelves,
You have to use 450mm depth self.



You can have this connection
ONLY using 450mm depth shelf.

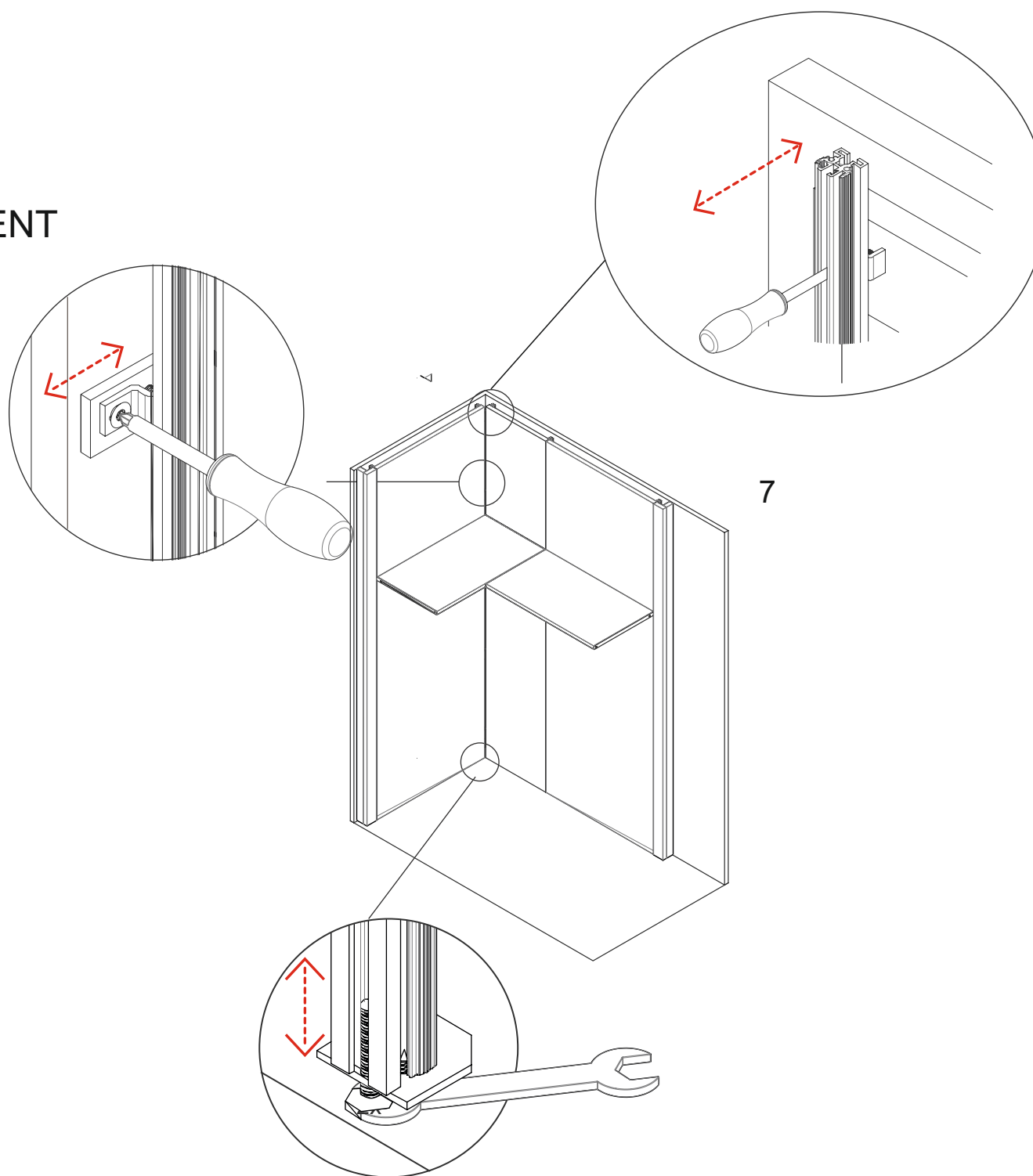
*In between, using 350mm depth shelf
you cannot have this connection.

Mounting Step

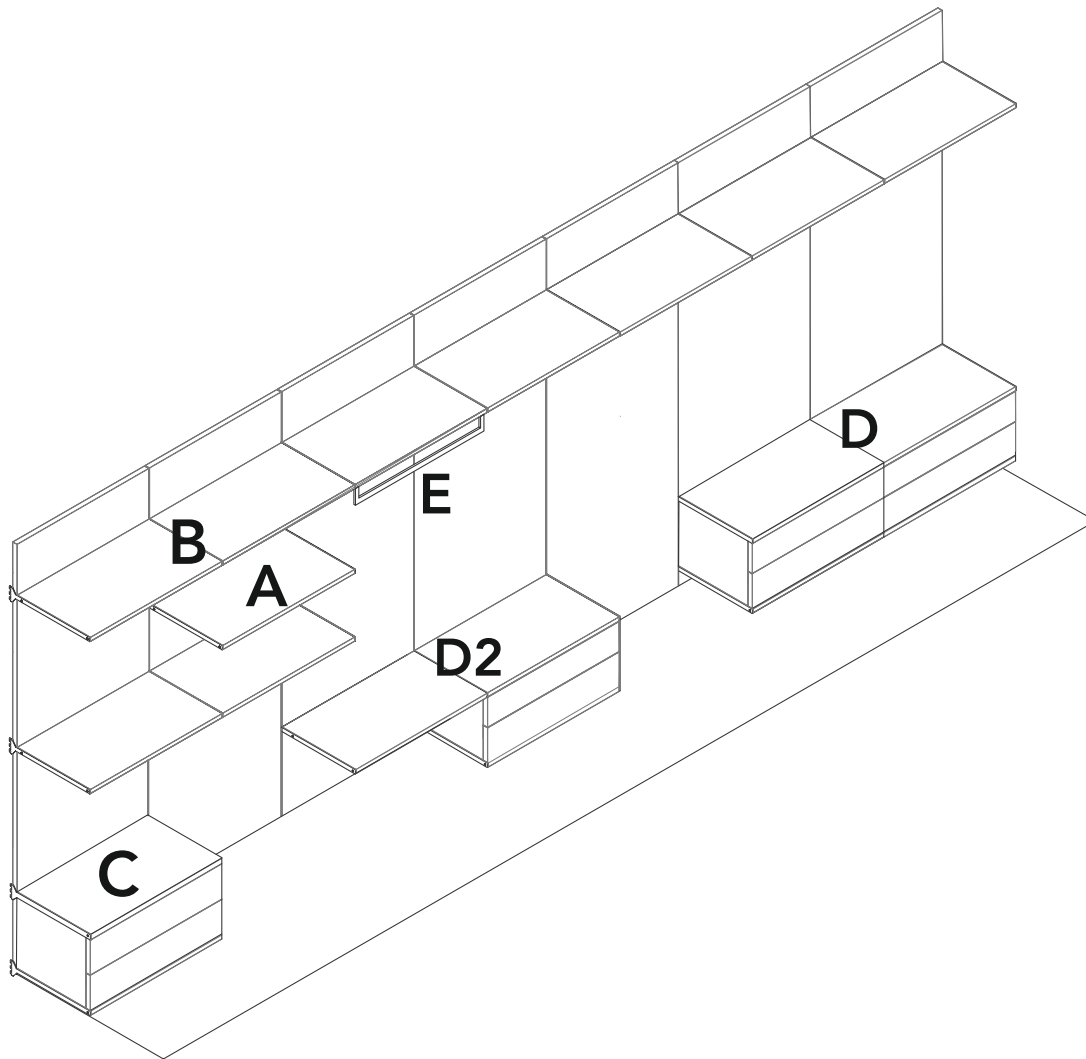


ADJUSTMENT STEPS

FOCUS ON
FINE 3D ADJUSTMENT
AFTER MOUNTING



GENERAL VIEW

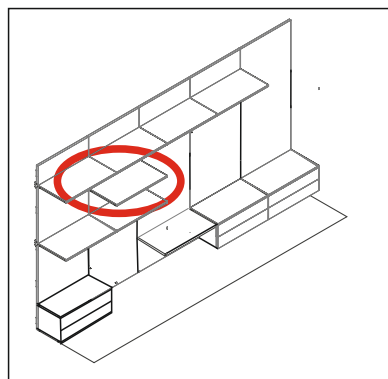
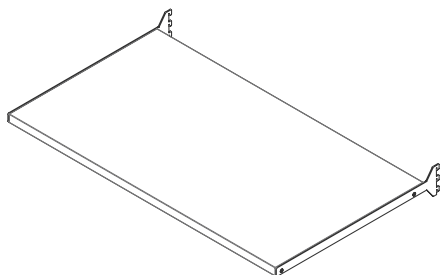


Configurations

- A. Single Shelf
- B. Double Shelf
- C. Cabinet inserted between 2 shelves
- D. Double Cabinet
- D2. Cabinet+Shelf
- E. Rod

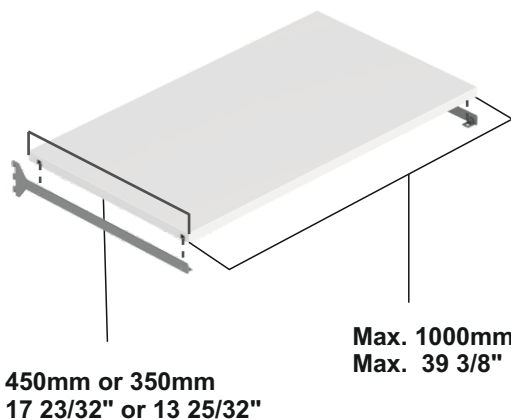
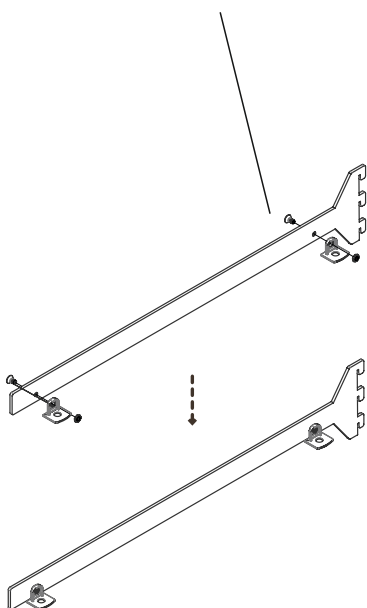
CONFIGURATION A

WOOD SHELF APPLICATION ONLY



SHELF DIMENSIONS:
Width: 1000mm / 39 3/8" MAX
Depth: 350mm or 450mm
13 25/32" or 17 23/32"

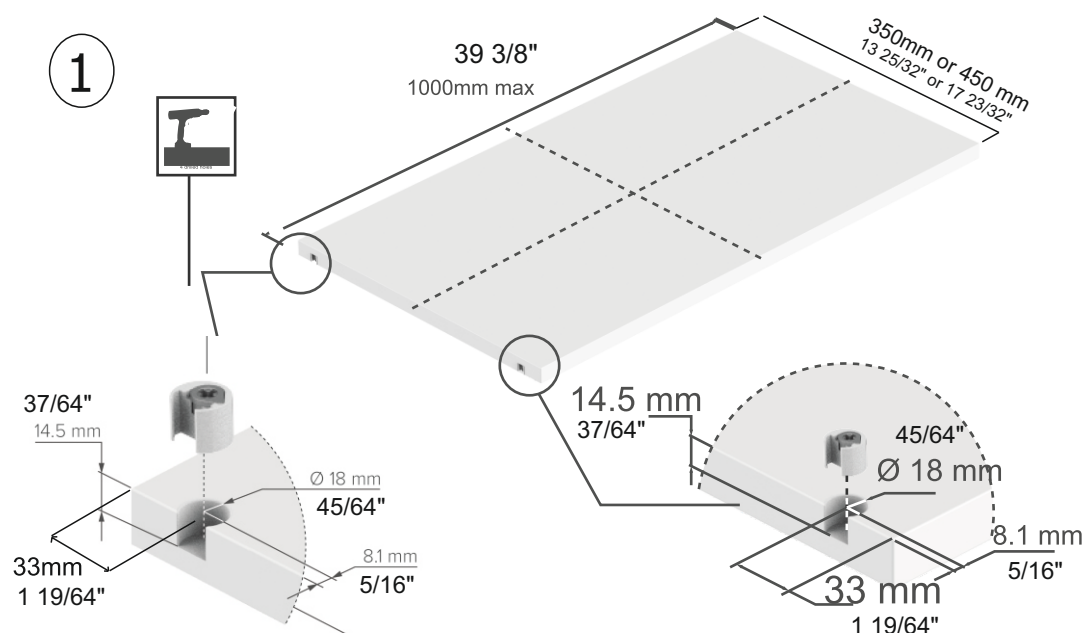
ART. 6781265100 (for 450mm x th.25mm shelf) (for 17 23/32" x 63/64" shelf)
ART. 6781264100 (for 450mm x th.19mm shelf) (for 17 23/32" x 3/4" shelf)
ART. 6781275100 (for 350mm x th.25mm shelf) (for 13 25/32" x 63/64" shelf)
ART. 6781277100 (for 350mm x th.19mm shelf) (for 13 25/32" x 3/4" shelf)



Hardware set included
in each cod. art.

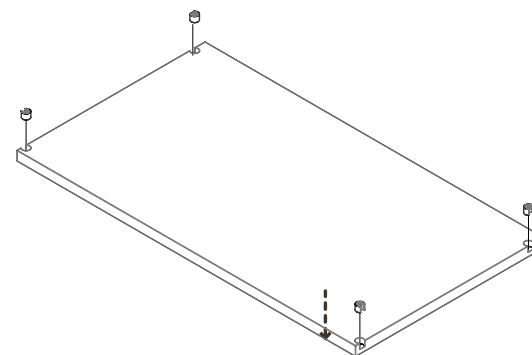


1

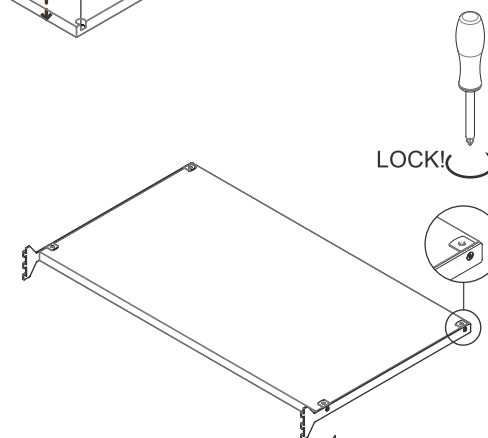
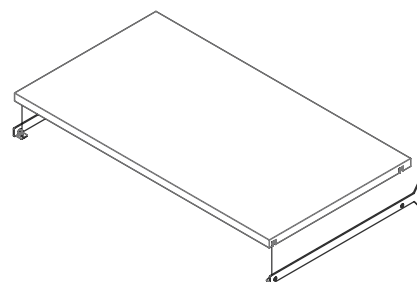


**same operation
on the other top side*

2

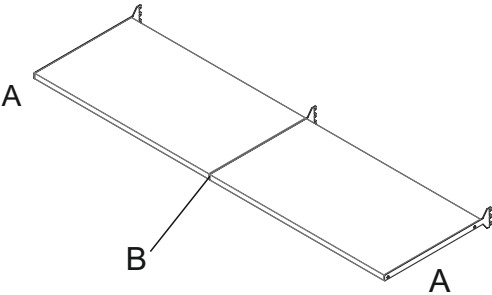


3

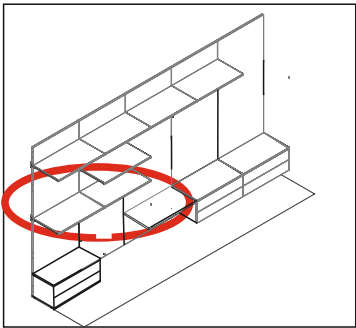


CONFIGURATION B

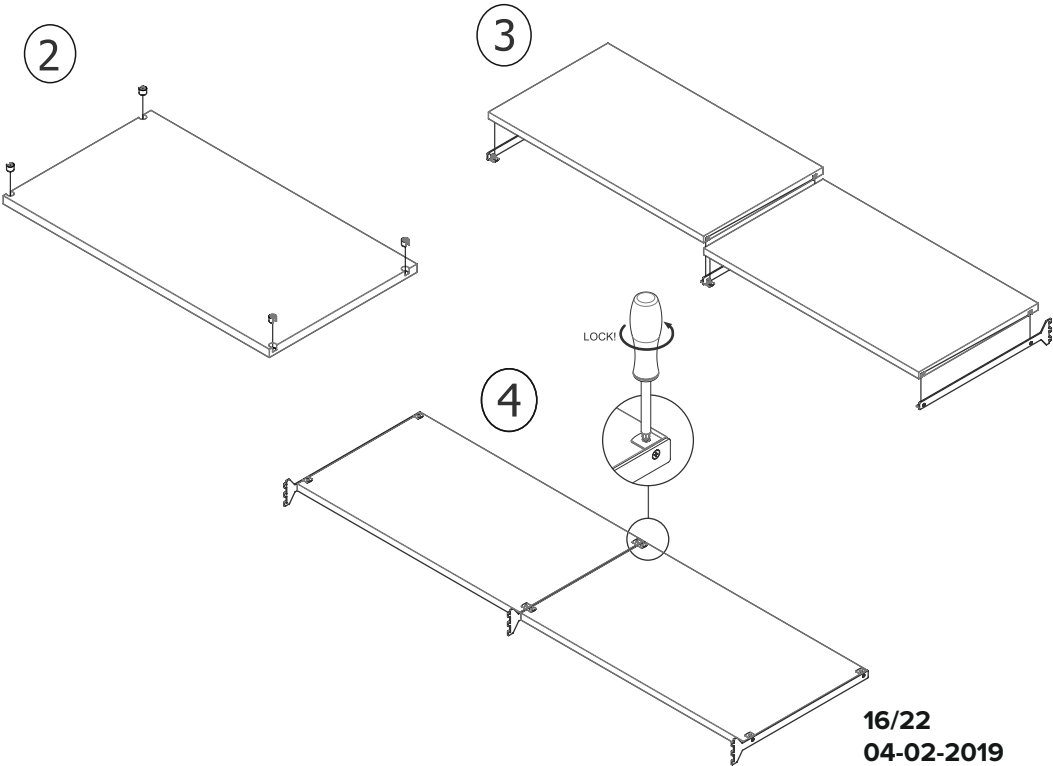
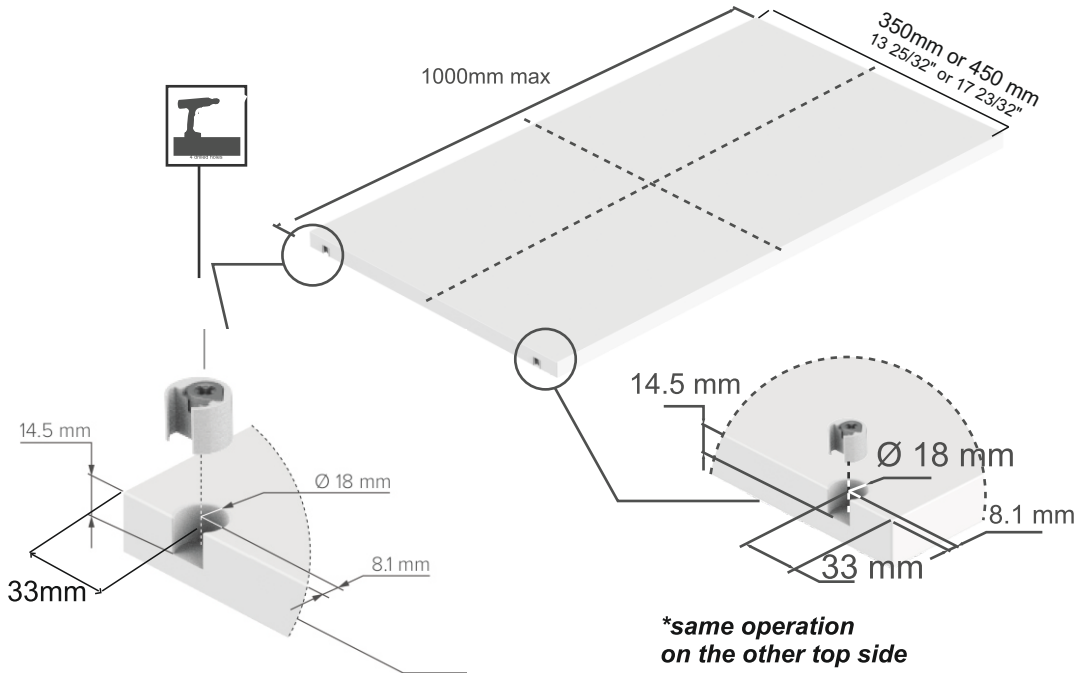
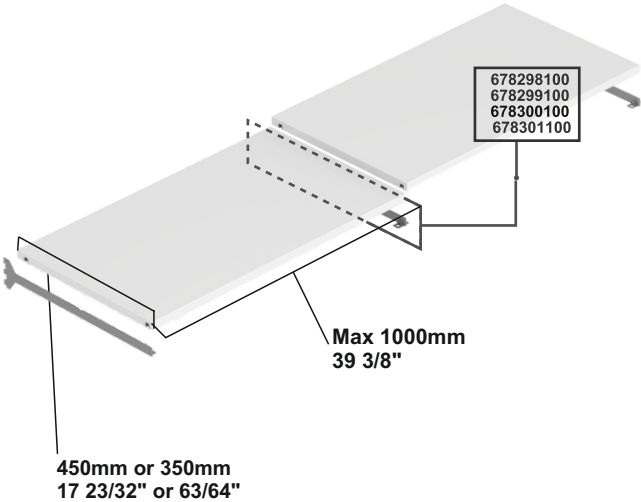
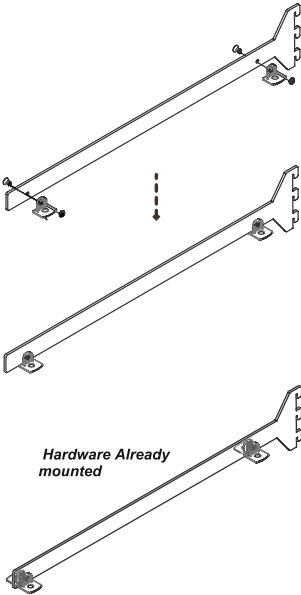
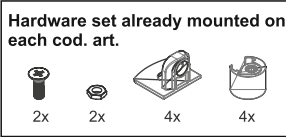
DOUBLE WOOD SHELF APPLICATION



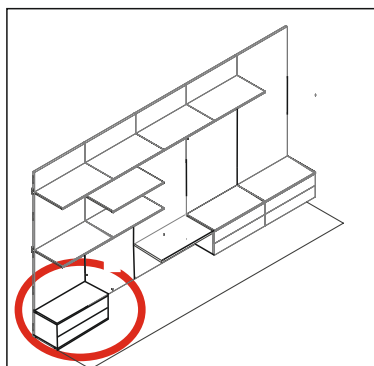
ART. 678298100 (for 450mm x 25mm shelf) (for 17 23/32" x 63/64"shelf)
ART. 678299100 (for 450mm x 19mm shelf) (for 17 23/32" x 3/4"shelf)
ART. 678300100 (for 350mm x 25mm shelf) (for 13 25/32" x 63/64"shelf)
ART. 678301100 (for 350mm x 19mm shelf) (for 13 25/32" x 3/4"shelf)



SHELF DIMENSIONS:
Width: 1000mm /39 3/8"MAX
Depth: 350mm or 450mm
13 25/32" or 17 23/32"



CONFIGURATION C
CABINET APPLICATION

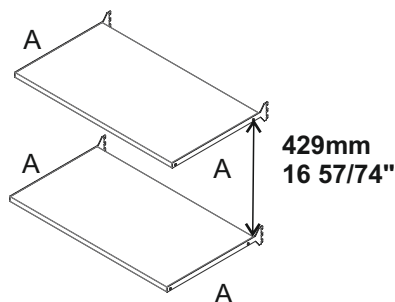


Ready cabinet to insert between 2 shelves.
Brackets to use: as per configuraiton A)

with BRACKET of 19mm th. (art. 6781264100-6781277100)

CLEARANCE HEIGHT: 429mm

(add or detract 32mm and multiple, if you need to change height cabinet.)



CABINET DIMENSIONS

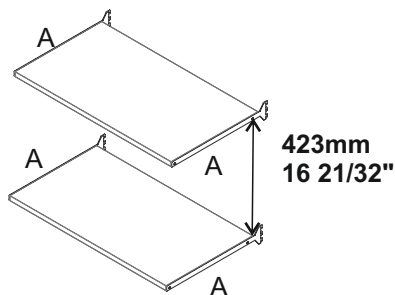
HEIGHT: Min.Suggested 429mm / 16 57/74"
DEPTH(*): 450mm / 17 23/32" or 350mm/ 13 25/32"
WIDTH: Max. 1000mm / 39 3/8"

*** = Front Included**

with BRACKET of 25mm th. (art. 6781265100-6781275100)

CLEARANCE HEIGHT: 423mm

(add or detract 32mm and multiple, if you need to change height cabinet.)

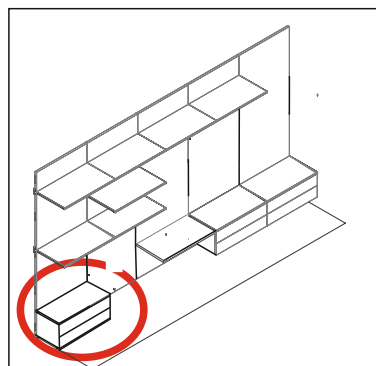


CABINET DIMENSIONS

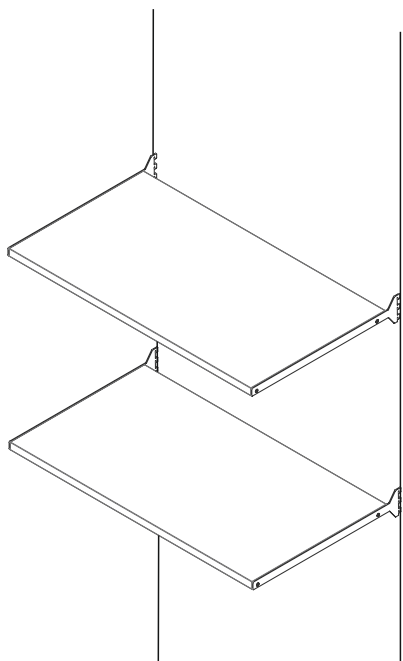
HEIGHT: Min.Suggested 423mm / 16 21/32"
DEPTH (*): 450mm / 17 23/32" or 350mm/ 13 25/32"
WIDTH: Max. 1000mm / 39 3/8"

*** = Front Included**

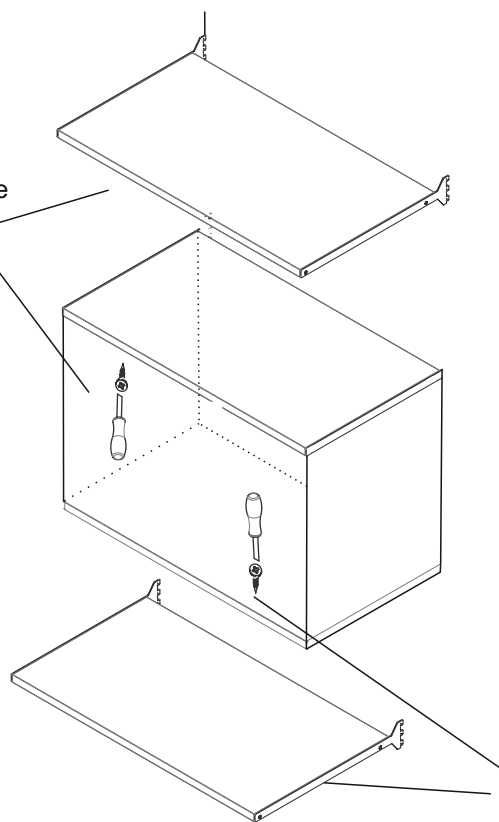
CONFIGURATION C
CABINET APPLICATION



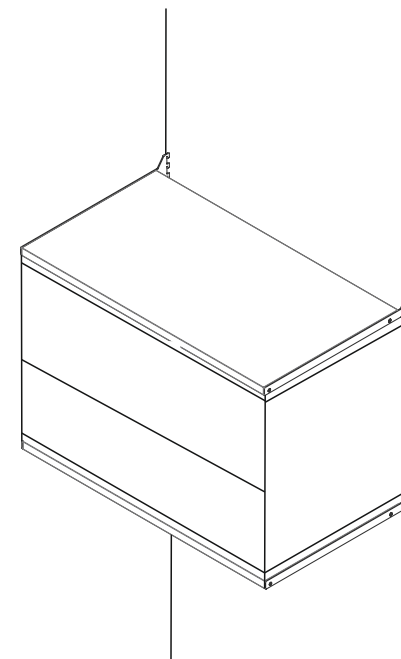
HOW TO INSERT THE CABINET



Fix the Cabinet to the
shelf with screws



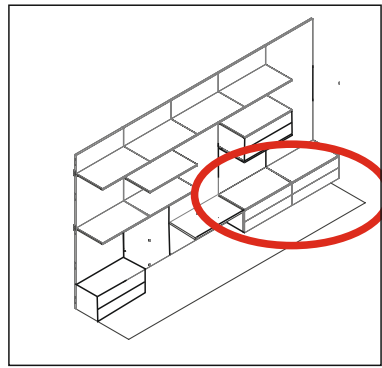
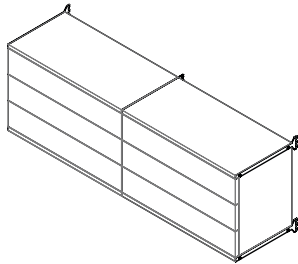
Fix the Cabinet to the
shelf with screws



***Screws from above or below
depending if screw visible or not***

CONFIGURATION D

DOUBLE CABINET APPLICATION

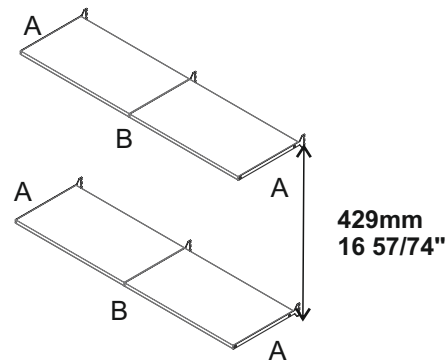


Ready double cabinet to insert between 2 shelves.
Brackets to use: as per configuraiton B)

with BRACKET of 19mm th. (art. 678299100- 678301100)

CLEARANCE HEIGHT: 429mm

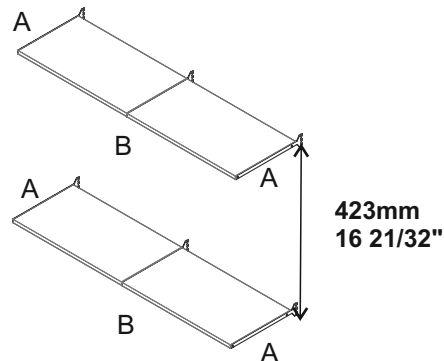
(add or detract 32mm and multiple, if you need to change height cabinet.)



with BRACKET of 25mm th. (art. 678298100-678300100)

CLEARANCE HEIGHT: 423mm

(add or detract 32mm and multiple, if you need to change height cabinet.)



DOUBLE CABINET DIMENSIONS

HEIGHT: Min.Suggested 429mm / 16 57/74"
DEPTH(*): 450mm / 17 23/32" or 350mm/ 13 25/32"
WIDTH: Max. 1000mm+1000mm /
39 3/8" + 39 3/8"

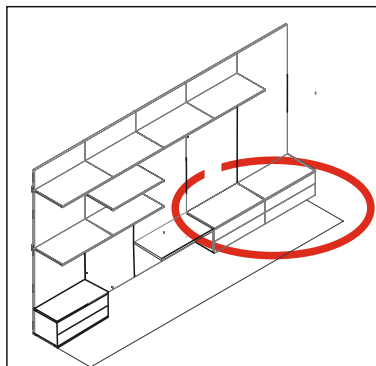
*** = Front Included**

DOUBLE CABINET DIMENSIONS

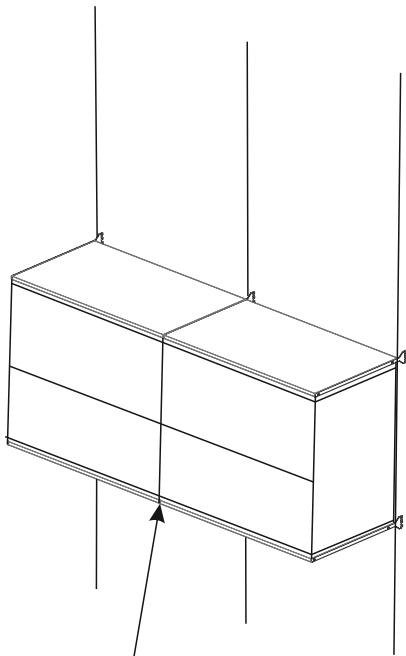
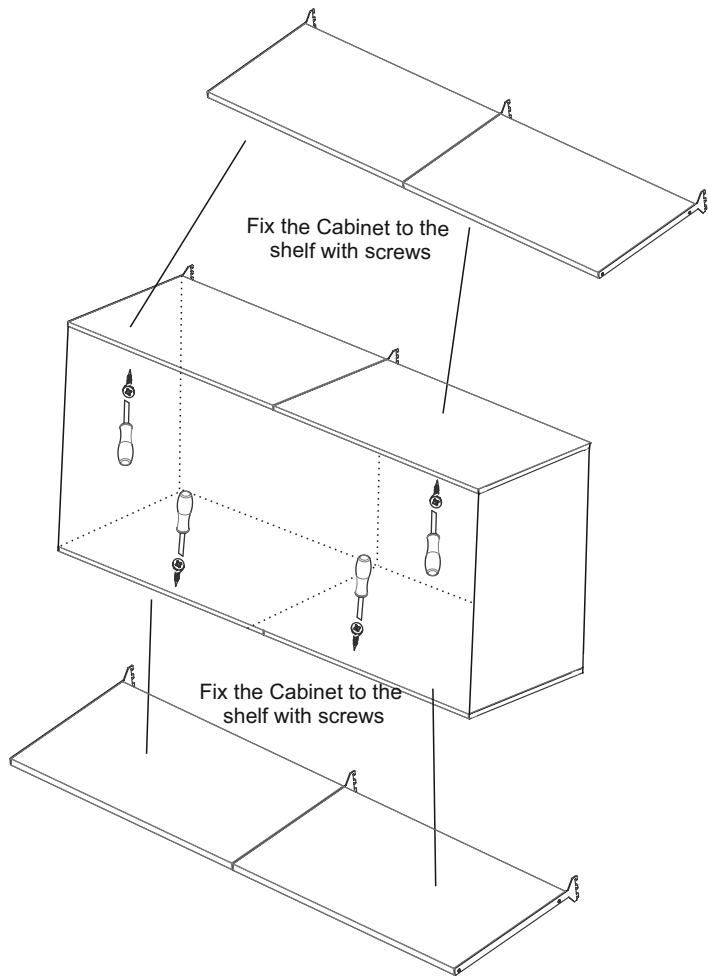
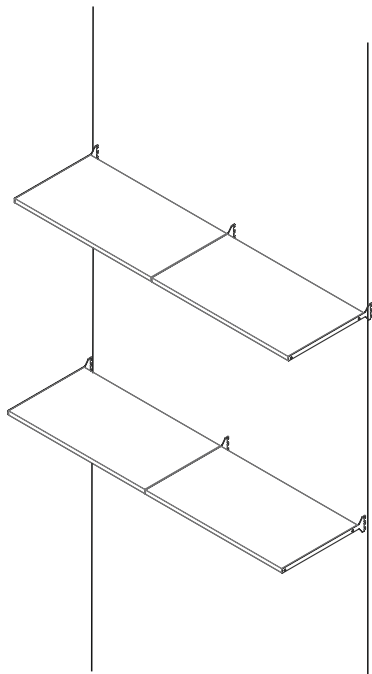
HEIGHT: Min. Suggested 423mm / 16 21/32"
DEPTH(*):450mm / 17 23/32" or 350mm / 13 25/32"
WIDTH: Max. 1000mm + 1000mm/
39 3/8" + 39 3/8"

*** = Front Included**

CONFIGURATION D
CABINET APPLICATION



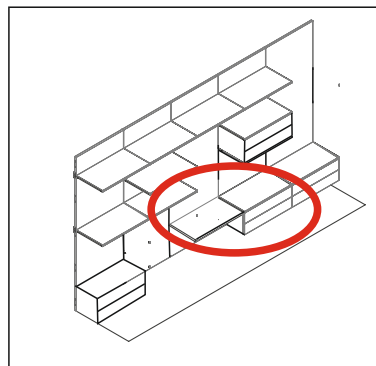
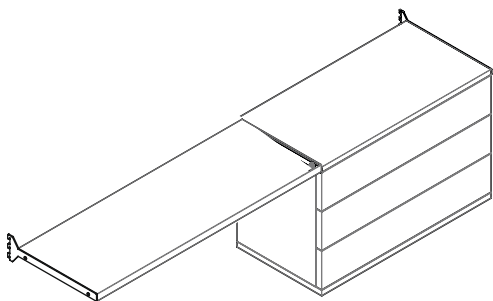
HOW TO INSERT THE CABINET



Fix together the
cabinets on the side gable

CONFIGURATION D2

CABINET + SHELF APPLICATION



Same steps and dimensions of CONFIGURATION D.

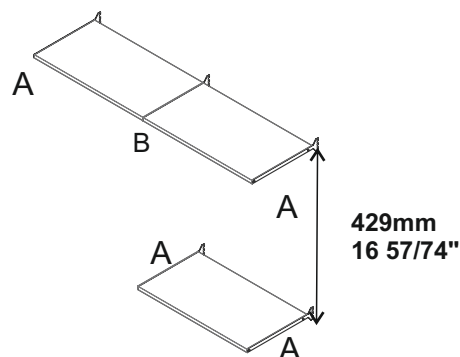
Only difference: use only 1 cabinet to insert.

SHELF NEEDS TO HAVE THE SAME DEPTH THAN THE CABINET

with BRACKET of 19mm th. (art. 678299100-678301100)

CLEARANCE HEIGHT: 429mm

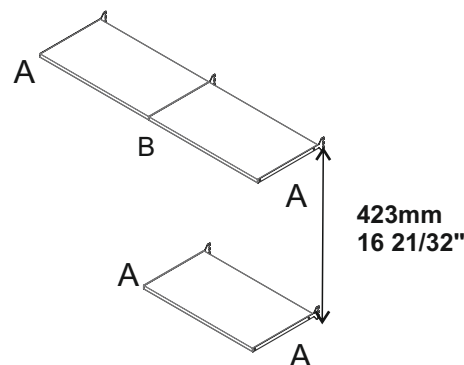
(add or detract 32mm and multiple, if you need to change height cabinet.)



with BRACKET of 25mm th. (art. 678298100-678300100)

CLEARANCE HEIGHT: 423mm

(add or detract 32mm and multiple, if you need to change height cabinet.)



SINGLE CABINET DIMENSIONS

HEIGHT: Min. Suggested 429mm / 16 57/74"
DEPTH(*): 450mm / 17 23/32" or 350mm / 13 25/32"
WIDTH: Max. 1000mm / 39 3/8"

SHELF DIMENSIONS

DEPTH(*): 450mm / 17 23/32" or 350mm / 13 25/32"
WIDTH : Max. 1000mm / 39 3/8"
THICKNESS 19mm / 3/4"

*** = Front Included**

SINGLE CABINET DIMENSIONS

HEIGHT: Min. Suggested 423mm / 16 21/32"
DEPTH(*): 450mm / 17 23/32" or 350mm / 13 25/32"
WIDTH: Max. 1000mm / 39 3/8"

SHELF DIMENSIONS

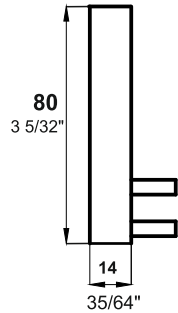
DEPTH(*): 450mm / 17 23/32" or 350mm / 13 25/32"
WIDTH : Max. 1000mm / 39 3/8"
THICKNESS 25mm / 63/64"

*** = Front Included**

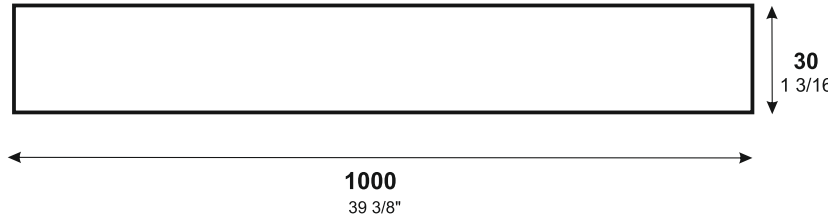
CONFIGURATION E

ROD APPLICATION

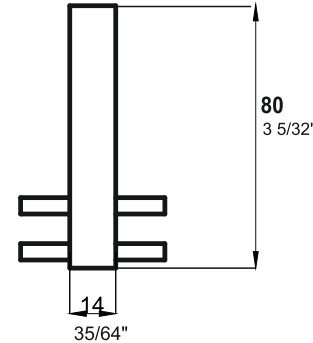
ART. 678446100



ART. 678538100



ART. 678447100



Lateral Rod Support: art. 678446100
Central Rod Support: art. 678447100
Rod : art. 678538100

To fix Rod Support to the shelf,
the suggestion is to use:

M5x22mm screws for 16mm th. shelf
M5x25mm screws for 19mm th. shelf
M5x30mm screws for 25mm th. shelf

Screws not included.

***= variance in screw length of +/-1 mm,
is acceptable**

What to CONSIDER to determinate the rod cut:

for Aesthetic Reason: **6 mm (15/64")** gap to side panel

Overall of each support (lateral/ central) : **14mm (35/64")**

Example:

rod= 1000mm / 39 3/8"

panel width= 800mm / 31 1/2"

Rod cut= 1000-200= 800(panel width) -6-6-14-14= 760mm / 29 59/64"

