

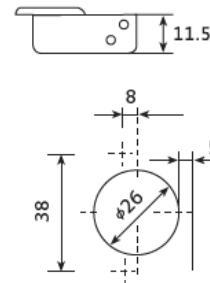
FORMULA

H = Height plate
 K = Drilling distance
 D or A = Overlay

K=4
 H=0, OL=18(±0.5)mm
 H=2, OL=16(±0.5)mm
 H=4, OL=14(±0.5)mm

H = Hauteur plaque
 K = Distance de perçage
 D or A = Recouvrement

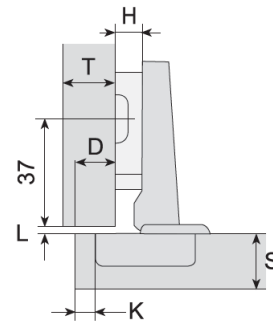
À visser/Screw-In



Appliquées
 Full Overlay

$$H = 11 + K - D$$

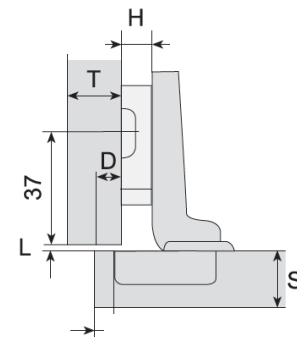
D \ K	3	4	5
0	14	15	16
2	11	12	14
4	8	10	12



Semi-appliquées
 Half Overlay

$$H = 2 + K - D$$

D \ K	3	4	5
0	5	6	7
2	3	4	5
4	1	2	3



Encastrées
 Inset

$$H = -4 + K - A$$

A \ K	3	4	5
0	1	0	-1
2	3	2	1
4	5	4	2

