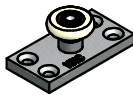
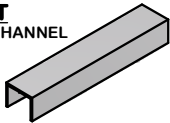


C-913/C-914 GUIDE SYSTEM INSTRUCTION SHEET



PARTS LIST

C-914 GUIDE CHANNEL

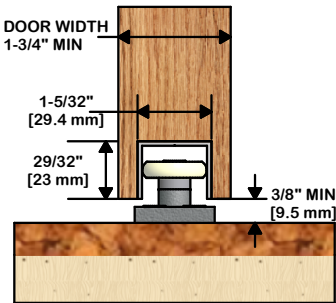


C-913 BALL BEARING ROLLER GUIDE



#10 X 1-1/2" FLATHEAD SCREWS (4 PER C-913)

OPTION 1: GUIDE CHANNEL IN DOOR WITH GUIDE ON FLOOR



STEP 1

CUT C-914 ALUMINUM GUIDE CHANNEL TO CORRECT LENGTH IF REQUIRED (TYPICALLY, LENGTH EQUALS DOOR WIDTH. EXAMPLE: DOOR WIDTH IS 36" THEREFORE CHANNEL IS 36".)

STEP 2

PREPARE SLOT IN DOOR AT LEAST 1-5/32" [29.4 mm] WIDE IN CENTER OF DOOR, AND AT LEAST 29/32" [23 mm] DEEP. IT IS RECOMMENDED TO MAKE THE SLOT AS ACCURATE AS POSSIBLE FOR SECURE FIT AND NEAT APPEARANCE.

STEP 3

DRILL HOLES IN C-914 CHANNEL, AND PRE-DRILL HOLES IN DOOR. SCREW CHANNEL INTO PLACE WHILE KEEPING IT FLUSH WITH THE EDGE OF THE DOOR. (#8 SCREW SIZE RECOMMENDED)

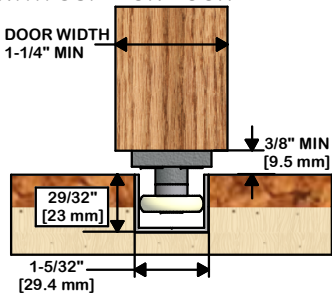
STEP 4

LOCATE C-913 ROLLER GUIDE AS REQUIRED AND SECURE TO FLOOR WITH #10 X 1-1/2" FLATHEAD SCREWS (4).

STEP 5

CONTINUE WITH PROJECT BY INSTALLING HANGERS AND PLACING DOOR IN POSITION.

OPTION 2: GUIDE CHANNEL IN FLOOR WITH GUIDE ON DOOR



STEP 1

CUT C-914 ALUMINUM GUIDE CHANNEL TO CORRECT LENGTH IF REQUIRED.

STEP 2

PREPARE SLOT IN FLOOR SAME SIZE AS INDICATED ABOVE IN STEP 2. GUIDE CHANNEL SHOULD BE FLUSH WITH FINISHED FLOOR.

STEP 3

DRILL HOLES IN C-914 CHANNEL, AND PRE-DRILL HOLES IN FLOOR. SCREW CHANNEL INTO PLACE. (#8 SCREW SIZE RECOMMENDED)

STEP 4

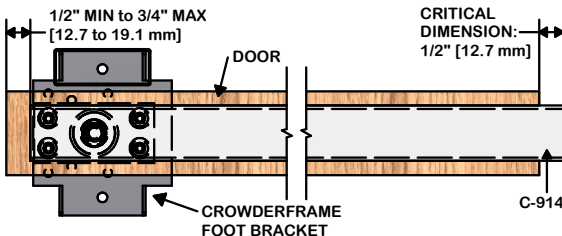
LOCATE C-913 ROLLER GUIDE 1" FROM EACH EDGE OF DOOR. SECURE TO DOOR WITH #10 X 1-1/2" FLATHEAD SCREWS (4).

STEP 5

CONTINUE WITH PROJECT BY INSTALLING HANGERS AND PLACING DOOR IN POSITION.

CROWDERFRAME APPLICATION:

WHEN USING A C-913/914 GUIDE SYSTEM WITH THE CROWDERFRAME POCKET DOOR KIT PLEASE REFER TO INSTRUCTIONS BELOW



NOTES:

DUE TO THE LOCATION OF THE HOLES FOR THE C-913 ROLLER GUIDE ON THE POCKET DOOR FOOT BRACKETS, THE C-914 CHANNEL MUST EXTEND BEYOND THE BACK EDGE OF THE DOOR (INSIDE POCKET). THIS DISTANCE CAN BE NO GREATER OR LESS THAN 1/2" IN ORDER FOR THE CHANNEL TO CATCH THE ROLLER WHEN FULLY CLOSED. IN THIS CASE YOU CAN STOP THE SLOT FOR THE C-914 CHANNEL 1/2" MIN TO 3/4" MAX FROM THE FRONT EDGE OF THE DOOR THUS HIDING THE CHANNEL. IT MAY BE NECESSARY TO CUT THE CHANNEL TO SUIT THIS APPLICATION. SEE ILLUSTRATION FOR MORE DETAILS.



K.N. CROWDER MFG. INC.

1220 BURLOAK DRIVE
BURLINGTON, ONTARIO, CANADA, L7L 6B3
TELEPHONE: 905-315-9788 - FAX: 905-315-8090
TOLL FREE FAX: 1-800-567-0123

K.N. CROWDER INC.

210 EIGHTH STREET SOUTH
LEWISTON, NEW YORK, U.S.A. 14092
TOLL FREE TELEPHONE: 1-866-999-1KNC (1562)
TOLL FREE FAX: 1-800-567-0123

WEBSITE: www.kncrowder.com --- E-MAIL: customerservice@kncrowder.com