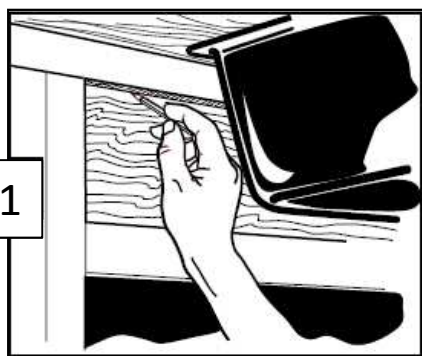
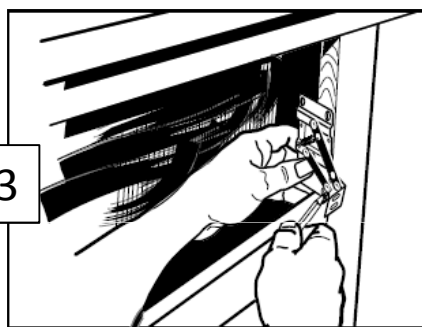


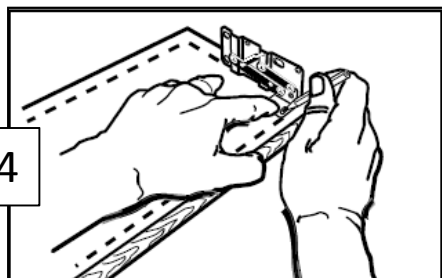
FALSE FRONT TRAY



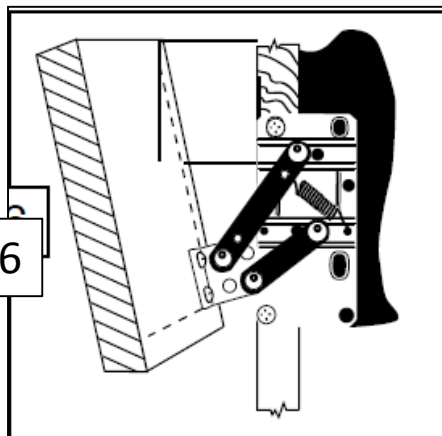
1- Draw and cut the front sink panel



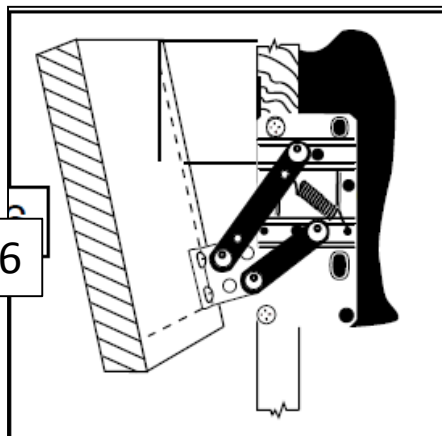
2- Take off the cutted part



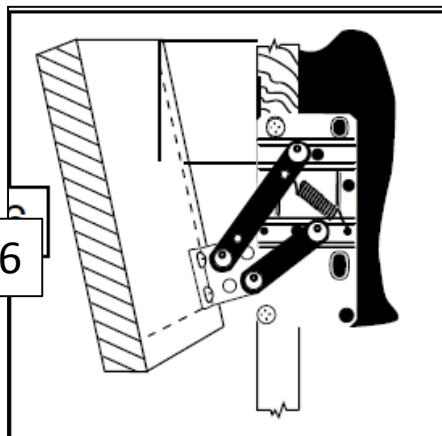
3- Place the hinges on the frame. Mark the screw holes. (make sure the hinge is flush with the bottom of the frame when it is in open position). Do not screw the hinges at this step.



4- Put the front panel face down. Place the hinge in closed position on the panel and mark the holes.



5- Center the basket at 1" from the top of the panel. Mark the holes of the basket. Install the screws but not completely. You will install the basket after have screwed the hinges onto the frame.



6- Screw on the hinges on both sides of the frame. Install the basket and screw tightly