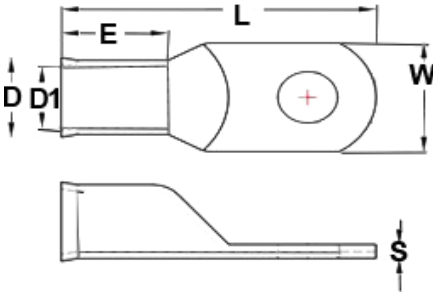




Copper Tubular Lugs

- DC Battery, Solar and AC Electrical Applications
- High Conductivity Seamless Tubular Copper
- Electro-Tin Plated
- Flared Belled Barrel
- 105°C 600V
- UL & cUL Listed

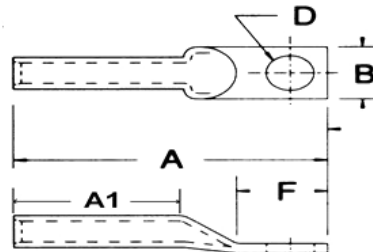


CAT. NO.	WIRE AWG	STUD SIZE D2	DIMENSIONS						BOX QTY
			W	DI	D	L	E	S	
92002	6	3/8"	0.55"	0.230"	0.307"	1.33"	0.354"	0.067"	25
92004	4	3/8"	0.55"	0.287"	0.358"	1.40"	0.394"	0.071"	25
92006	2	3/8"	0.65"	0.339"	0.433"	1.71"	0.630"	0.091"	25
92008	2	1/2"	0.75"	0.339"	0.433"	1.71"	0.630"	0.091"	25
92010	1/0	3/8"	0.75"	0.417"	0.512"	1.85"	0.630"	0.098"	25
92012	1/0	1/2"	0.75"	0.417"	0.512"	1.85"	0.630"	0.098"	25
92014	2/0	3/8"	0.83"	0.461"	0.563"	2.05"	0.728"	0.102"	25
92016	2/0	1/2"	0.83"	0.461"	0.563"	2.05"	0.728"	0.102"	25



Meter Socket Lugs

- Uses 840 Common Dies - One Die Installs All Sizes
- For Meter Pan and General Applications
- Accepts Both Aluminum and Copper Conductors
- Made of High Conductivity Aluminum
- Connector Barrel is Coated with Oxide Inhibiting Compound
- Tin Plated
- Marked with Conductor Sizes and Die References
- Meets or Exceeds Class A Requirements of ANSI C119.4



CAT. NO.	WIRE SIZE—ALUMINUM OR COPPER WIRE SIZE				STUD SIZE D	DIMENSIONS			
	CONCENTRIC	COMPRESSED	COMPACT	SOLID		A	AI	B	F
93912	2/0	2/0	3/0	3/0	3/8"	3-1/4"	1-3/8"	1-15/16"	1-5/16"
93920	4/0	4/0	250	-	3/8"	3-1/4"	1-3/8"	1-15/16"	1-5/16"

CONNECTORS
 Compression Connectors