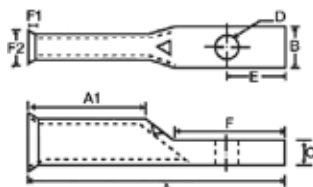




# Copper Flex Cable Short Barrel 1 Hole Compression Lugs

- High Conductivity Seamless Copper
- Electro-Tin Plating Resists Corrosion
- Flared/Belled Entry for Easy Insertion of Fine Strand Flexible Cable - Class G, H, I, K(Battery), M(Welding), DLD
- Color Coded Die Index and Crimp Marks Printed on Barrel
- UL 486AB Listed for Applications Thru 35KV

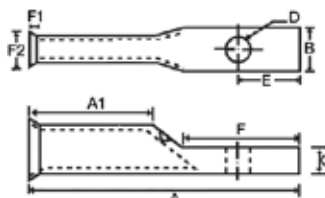


CAT. NO.	WIRE RANGE	STUD SIZE	COLOR CODE	COMM	ASTM CLASS H	WELDING CLASS M	DLO	DIMENSIONS								BOX QTY	
								A	AI	B	C	D	E	F	FI		F2
94602	8	#10	RED	8	10	10	-	1.20"	0.44"	0.42"	0.08"	0.21"	0.28"	0.59"	0.12"	0.32"	50
94606	6	1/4"	BLUE	6	8	8	(61)	1.50"	0.71"	0.42"	0.08"	0.25"	0.30"	0.67"	0.16"	0.34"	50
94610	4	5/16"	GRAY	4	6	6	(105)	1.50"	0.71"	0.49"	0.08"	0.33"	0.31"	0.67"	0.16"	0.42"	50
94614	2	5/16"	BROWN	2	4	4	(125)	1.80"	0.83"	0.60"	0.10"	0.33"	0.37"	0.81"	0.18"	0.49"	25
94618	1	5/16"	GREEN	1	2	2	(150)	1.83"	0.83"	0.67"	0.11"	0.33"	0.37"	0.81"	0.18"	0.53"	25
94622	1/0	3/8"	PINK	1/0	1	1	(225)	1.83"	0.83"	0.74"	0.13"	0.41"	0.37"	0.81"	0.18"	0.56"	10
94626	2/0	1/2"	BLACK	2/0	1/0	1/0	(275)	2.24"	0.94"	0.81"	0.12"	0.51"	0.47"	1.06"	0.24"	0.64"	10
94630	3/0	1/2"	ORANGE	3/0	2/0	-	2/0 (325)	2.36"	0.98"	0.90"	0.13"	0.51"	0.47"	1.06"	0.24"	0.72"	10
94634	4/0	1/2"	PURPLE	4/0	3/0	2/0	3/0 (450)	2.36"	0.98"	1.00"	0.13"	0.51"	0.47"	1.06"	0.26"	0.77"	10
94636	250	1/2"	YELLOW	250	-	3/0	4/0 (550)	2.48"	1.06"	1.09"	0.15"	0.51"	0.47"	1.06"	0.26"	0.84"	10
94637	300	1/2"	WHITE	300	4/0	4/0	262.6	2.49"	1.06"	1.19"	0.15"	0.51"	0.52"	1.06"	0.31"	0.94"	10
94639	350	1/2"	RED	350	250	250	313.1	2.61"	1.10"	1.28"	0.17"	0.51"	0.52"	1.06"	0.33"	1.02"	10
94640	350	5/8"	RED	350	250	250	313.1	2.91"	1.10"	1.28"	0.16"	0.67"	0.52"	1.38"	0.33"	1.02"	10
94643	500	1/2"	BROWN	500	350	350	373.3	3.28"	1.38"	1.54"	0.22"	0.51"	0.52"	1.38"	0.35"	1.20"	10
94644	500	5/8"	BROWN	500	350	350	373.3	3.28"	1.38"	1.54"	0.22"	0.67"	0.52"	1.38"	0.35"	1.20"	10
94646	600	5/8"	GREEN	600	400	400	4444	3.50"	1.50"	1.72"	0.25"	0.67"	0.69"	1.46"	0.39"	1.34"	6
94647	750	5/8"	BLACK	750	600	500	-	4.37"	1.85"	1.90"	0.27"	0.67"	0.69"	1.85"	0.43"	1.47"	3



# Copper Flex Cable Long Barrel 1 Hole Compression Lugs

- High Conductivity Seamless Copper
- Electro-Tin Plating Resists Corrosion
- Flared/Belled Entry for Easy Insertion of Fine Strand Flexible Cable - Class G, H, I, K(Battery), M(Welding), DLD
- Color Coded Die Index and Crimp Marks Printed on Barrel
- UL 486AB Listed for Applications Thru 35KV



CAT. NO.	WIRE RANGE	STUD SIZE	COLOR CODE	COMM	ASTM CLASS H	WELDING CLASS M	DLO	DIMENSIONS								BOX QTY	
								A	AI	B	C	D	E	F	FI		F2
94650	8	1/4"	RED	8	10	10	-	1.52"	0.81"	0.42"	0.08"	0.25"	0.28"	0.59"	0.12"	0.32"	50
94652	6	#10	BLUE	6	8	8	(61)	1.77"	0.98"	0.42"	0.08"	0.21"	0.30"	0.67"	0.16"	0.34"	50
94653	6	1/4"	BLUE	6	8	8	(61)	1.77"	0.98"	0.42"	0.08"	0.25"	0.30"	0.67"	0.16"	0.34"	50
94656	4	#10	GRAY	4	6	6	(105)	1.77"	0.98"	0.49"	0.09"	0.21"	0.31"	0.67"	0.16"	0.42"	50
94657	4	1/4"	GRAY	4	6	6	(105)	1.77"	0.98"	0.49"	0.09"	0.25"	0.31"	0.67"	0.16"	0.42"	50
94659	4	5/16"	GRAY	4	6	6	(105)	1.77"	0.98"	0.49"	0.09"	0.33"	0.31"	0.67"	0.16"	0.42"	50
94660	2	#10	BROWN	2	4	4	(125)	2.07"	1.10"	0.60"	0.10"	0.21"	0.37"	0.81"	0.18"	0.49"	25
94661	2	5/16"	BROWN	2	4	4	(125)	2.07"	1.10"	0.60"	0.10"	0.33"	0.37"	0.81"	0.18"	0.49"	25
94662	1	#10	GREEN	1	2	2	(150)	2.11"	1.10"	0.67"	0.11"	0.21"	0.37"	0.81"	0.18"	0.53"	25
94663	1	5/16"	GREEN	1	2	2	(150)	2.11"	1.10"	0.67"	0.11"	0.33"	0.37"	0.81"	0.18"	0.53"	25
94649	1/0	1/4"	PINK	1/0	1	1	(225)	2.21"	1.20"	0.74"	0.13"	0.25"	0.37"	1.06"	0.18"	0.56"	10
94665	1/0	5/16"	PINK	1/0	1	1	(225)	2.21"	1.20"	0.74"	0.13"	0.33"	0.37"	1.06"	0.18"	0.56"	10
94666	1/0	3/8"	PINK	1/0	1	1	(225)	2.21"	1.20"	0.74"	0.13"	0.41"	0.37"	1.06"	0.18"	0.56"	10
94667	1/0	1/2"	PINK	1/0	1	1	(225)	2.50"	1.20"	0.74"	0.13"	0.51"	0.47"	1.06"	0.18"	0.56"	10
94668	2/0	3/8"	BLACK	2/0	1/0	1/0	(275)	2.68"	1.38"	0.81"	0.12"	0.41"	0.47"	1.06"	0.24"	0.64"	10
94669	2/0	1/2"	BLACK	2/0	1/0	1/0	(275)	2.68"	1.38"	0.81"	0.12"	0.51"	0.47"	1.06"	0.24"	0.64"	10
94670	3/0	3/8"	ORANGE	3/0	2/0	-	2/0 (325)	2.80"	1.38"	0.90"	0.13"	0.41"	0.47"	1.06"	0.24"	0.72"	10
94671	3/0	1/2"	ORANGE	3/0	2/0	-	2/0 (325)	2.80"	1.38"	0.90"	0.13"	0.51"	0.47"	1.06"	0.24"	0.72"	10
94673	4/0	3/8"	PURPLE	4/0	3/0	2/0	3/0 (450)	2.80"	1.42"	1.00"	0.13"	0.51"	0.52"	1.06"	0.26"	0.77"	10
94674	4/0	1/2"	PURPLE	4/0	3/0	2/0	3/0 (450)	2.80"	1.42"	1.00"	0.13"	0.51"	0.52"	1.06"	0.26"	0.77"	10
94676	250	1/2"	YELLOW	250	-	3/0	4/0 (550)	3.03"	1.61"	1.09"	0.15"	0.51"	0.52"	1.06"	0.26"	0.84"	10
94677	300	1/2"	WHITE	300	4/0	4/0	262.6	3.39"	1.97"	1.19"	0.15"	0.51"	0.52"	1.06"	0.31"	0.94"	10
94678	350	1/2"	RED	350	250	250	313.1	3.46"	1.97"	1.28"	0.17"	0.51"	0.52"	1.06"	0.33"	1.02"	10
94679	350	5/8"	RED	350	250	250	313.1	3.46"	1.97"	1.28"	0.17"	0.67"	0.51"	1.06"	0.33"	1.02"	10
94680	400	1/2"	BLUE	400	300	300	350	3.86"	1.97"	1.39"	0.18"	0.51"	0.51"	1.38"	0.33"	1.08"	10
94681	400	5/8"	BLUE	400	300	300	350	3.86"	1.97"	1.39"	0.18"	0.67"	0.51"	1.38"	0.33"	1.08"	10
94683	500	5/8"	BROWN	500	350	350	373.3	4.13"	2.24"	1.54"	0.22"	0.67"	0.51"	1.38"	0.35"	1.20"	10
94684	600	5/8"	GREEN	600	400	400	4444	4.25"	2.24"	1.72"	0.25"	0.67"	0.69"	1.46"	0.39"	1.34"	6
94685	750	5/8"	BLACK	750	600	500	-	5.16"	2.64"	1.90"	0.27"	0.67"	0.69"	1.85"	0.43"	1.47"	3