



Catalog Number 70290
UPC Number 60198670290
Description Toggle Switch
DPDT, ON-OFF-(ON)
Momentary Contact

Features

- Heavy Duty
- DPDT
- ON-OFF-(ON)
- 6 Screw Terminals
- Momentary Contact

General

Material: Nickel Plated Zinc
HD Non-Metallic Housing
6 Copper Screw Terminals

Dimension Information

See Submittal Dwg

Specifications

Temperature Rating: N/A
Voltage Rating: 125/277 VAC
Flammability Rating: N/A
Amperage Rating: 20 AMP, 125VAC
10 AMP, 277VAC
Motor Load: 1-1/2 HP, 125/250VAC
InsulationResistance: 500V DC 100 mohm 1 Minute
Contact Resistant: 50 mohm Max
Dialectric Strength: 1500 V AC 1 Minute

Packaging

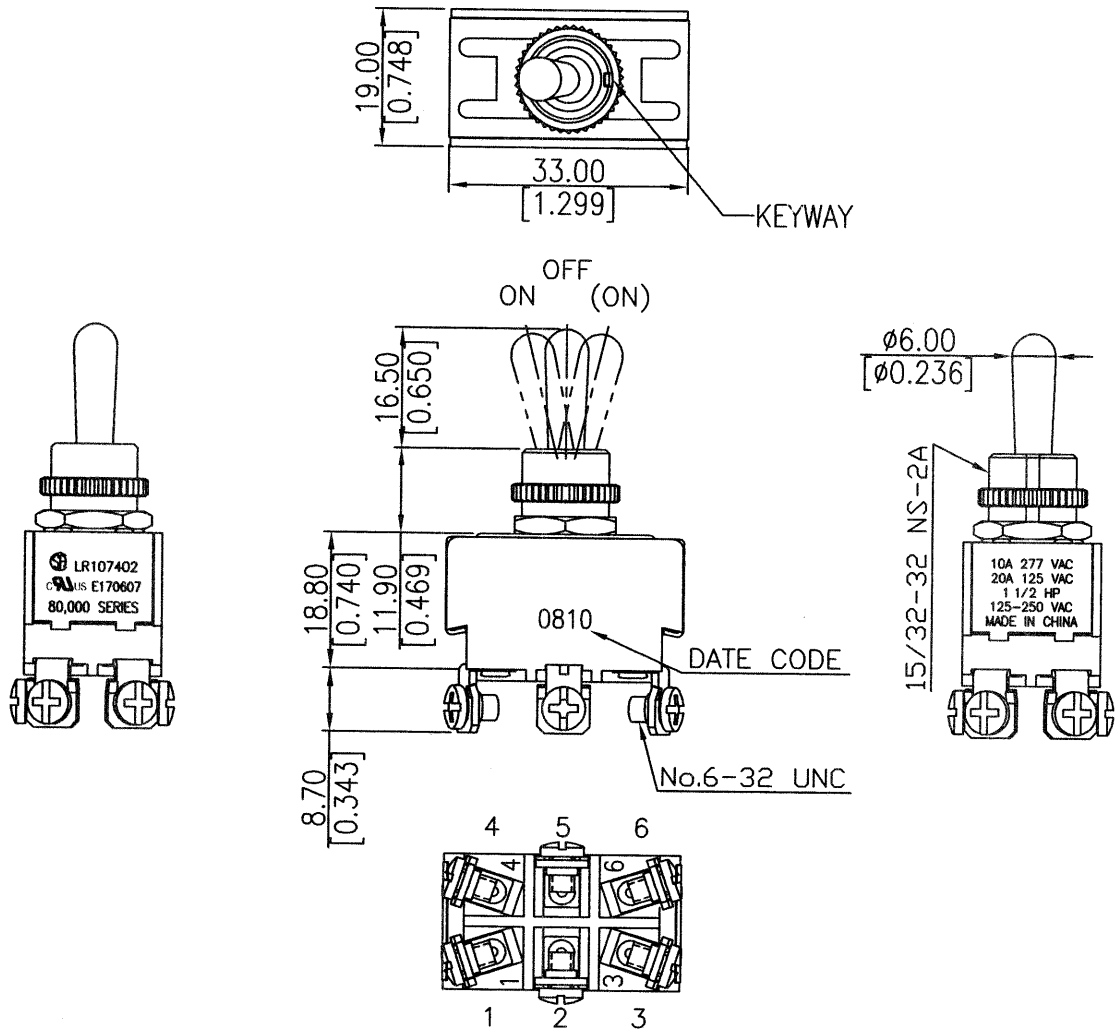
Bag Qty 10

Certifications

UL Yes
CSA Yes
ROHS

Rating	20A 125V, 10A 277V AC 1 1/2HP 125-250V AC	Mounting Hole	Circuit Diagram
Contact Resistance	50m ohm Max.		
Insulation Resistance	DC 500V 100M ohm Min.		
Dielectric Strength	AC 1500V 1 minute		
Switch Function	6P DPDT ON-OFF-(ON)		

Part	Unit	Mat'l	Status
Toggle	1	Zinc, nickel plated	
Bushing	1	Zinc, nickel plated	
Hex nut	1	Zinc, nickel plated	Assy
Knurl nut	1	Zinc, nickel plated	Assy



								△
								△
Date	Name	Description						NO
Drawn	Checked	Approved				Model Name	TOGGLE SWITCH	
						Model No.		REV.
08/09/10		08/09/10	Morris P/N	70290	Morris Products Queensbury NY			0