



Catalog Number	70080
UPC Number	60198670080
Description	Toggle Switch SPDT ON-OFF-ON



Features

- Heavy Duty
- SPDT
- ON-OFF-ON
- 3 Screw Terminals

General

Material:	Nickel Plated Zinc HD Non-Metallic Housing 3 Copper Screw Terminals
------------------	---

Dimension Information

See Submittal Dwg

Specifications

Temperature Rating:	N/A
Voltage Rating:	125/277 VAC
Flammability Rating:	N/A
Amperage Rating:	20 AMP, 125VAC 10 AMP, 277VAC
Motor Load:	3/4HP, 125/250VAC
Insulation Resistance:	500V DC 100 mohm 1 Minute
Contact Resistant:	50 mohm Max
Dielectric Strength:	1500 V AC 1 Minute

Packaging

Bag Qty	10
---------	----

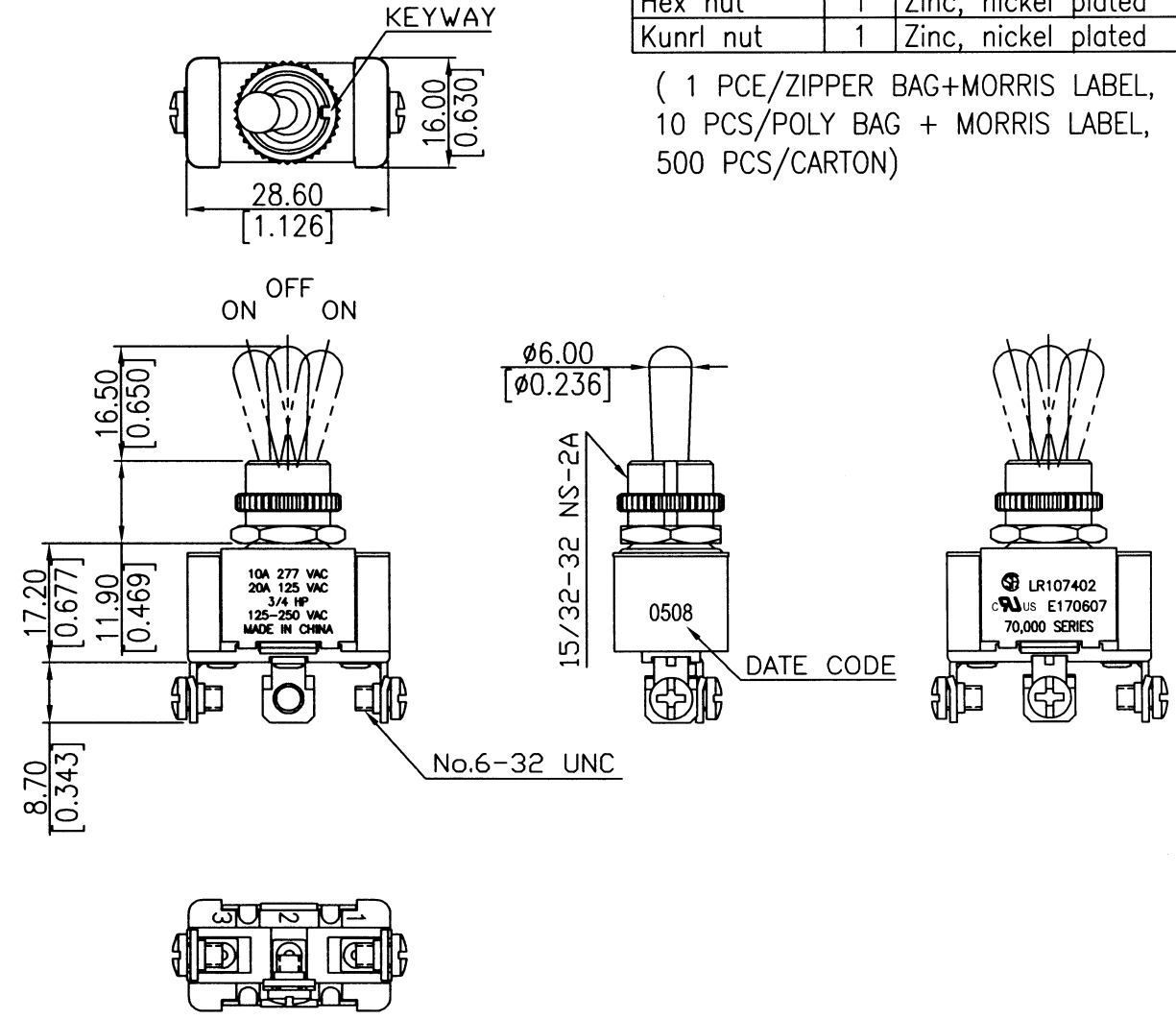
Certifications

UL	Yes
CSA	Yes
ROHS	

Rating	20A 125V,10A 277V AC 3/4HP 125-250V AC	Mounting Hole	Circuit Diagram
Contact Resistance	50m ohm Max.		
Insulation Resistance	DC 500V 100M ohm Min.		
Dielectric Strength	AC 1500V 1 minute		
Switch Function	3P SPDT ON-OFF-ON		
Operation Force	OFF-ON:1100gf±300gf ON-OFF:600gf±200gf		

Part	Unit	Mat'l	Status
Toggle	1	Zinc, nickel plated	Assy
Bushing	1	Zinc, nickel plated	Assy
Hex nut	1	Zinc, nickel plated	Assy
Kunrl nut	1	Zinc, nickel plated	Assy

(1 PCE/ZIPPER BAG+MORRIS LABEL,
10 PCS/POLY BAG + MORRIS LABEL,
500 PCS/CARTON)



							△		
							△		
Date	Name	Description					REV.	0	NO
Drawn	Checked	Approved	Morris Products	Model Name	TOGGLE SWITCH				
			Queensbury NY	Model No.					
05/08/'08	05/08/'08	05/09/'08	Morris P/N	70080	Unit	mm	(inch)		