



59100



SOLENOID VOLTAGE TESTER

Tests 6 to 600 Volts AC/DC
DC Polarity & Continuity

MORRIS PRODUCTS INC.



SOLENOID

Voltage Tester

The MORRIS Voltage Tester is designed for general purpose use to indicate nominal 50/60 Hertz AC or DC voltage and polarity, (120-600volts) in secondary residential, commercial and industrial circuits. When AC current is being tested, the indicator on the tester will vibrate slightly without affecting the polarity magnet. When DC current is being tested, the indicator and tester will not vibrate and the magnet in the polarity cap on top of the tester will indicate polarity. When the red side of the magnet is up, the red prod is positive. When the black side of the magnet is up, the black prod is positive.

The prod pointers are surrounded by retractable spring loaded shrouds which will prevent the prod pointers from short circuiting live wires in close proximity. To use the shrouded pointers, place them on the terminals or insulated conductors to be tested and push them in. The shrouds will retrace, and the pointers will make contact with the terminals or pierce the insulation of the covered conductors. When testing in open areas, and it is desired to have the pointers continually exposed, the shrouds can be locked in the retracted position by pushing them back and rotating them 90°

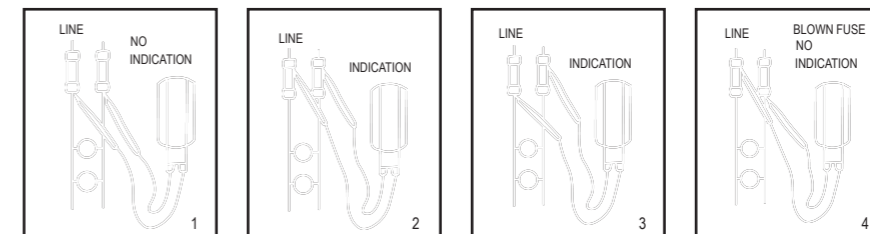
CAUTION!

Check the operating condition of the voltage tester on a known live circuit BEFORE relying on the tester reading.

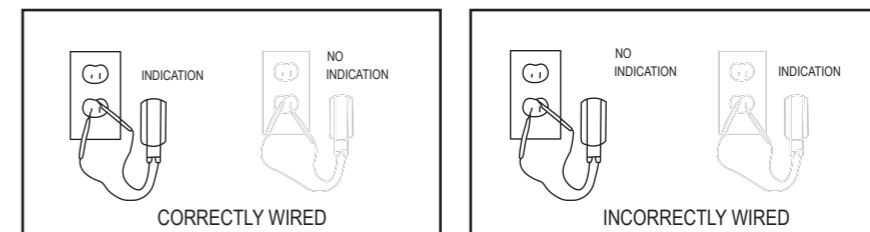
NOTE

The voltage tester is designed for INTERMITTENT DUTY ONLY. DO NOT leave it in the circuit for longer than (10) seconds.

TO LOCATE BLOWN FUSE



TO CHECK GROUND



CAUTION:

Use extreme caution when checking live electrical circuits to avoid injury due to electrical shock. MORRIS PRODUCTS assumes basic knowledge of electricity on the part of the purchaser and is not responsible for any injury or damages due to improper use of this tester.

601986591003
china