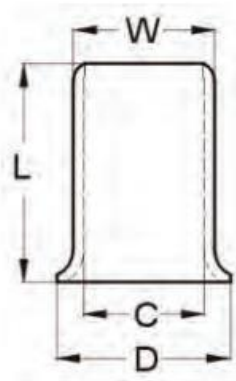




# MORRIS CAT#: 22080-22083

## Crimp Sleeves - Copper & Steel



### Features:

- Copper & Steel Crimp Sleeves for a Variety of Branch/Tap & Fixture Applications
- Fast, Permanent Crimp Splice
- Electrolytic Copper Or Zinc-Plated Steel
- UL 486C; CSA C22.2 #188

DIMENSIONS = INCHES

CAT. NO.	MATERIAL	CONDUCTOR RANGE	SLEEVE LENGTH (L)	INSIDE DIAMETER (C)	OUTSIDE DIAMETER (W)	SLEEVE WIDTH (D)	BAG QTY	MASTER BAG QTY
22080	COPPER	#18 - #10	.374	.205	.241	.295	100	1,000
22081	COPPER	#14 - #8	.610	.264	.309	.364	100	1,000
22082	STEEL	#18 - #10	.374	.205	.241	.295	100	1,000
22083	STEEL	#14 - #8	.610	.264	.309	.364	100	1,000