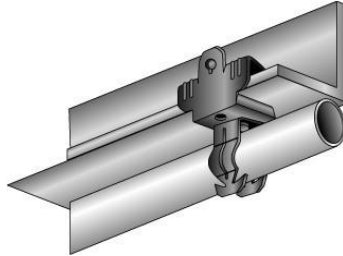




Morris CAT#: 18190-18192 Flange Mount Conduit Assembly - Bottom Mount



Features:

- Suspends conduit from bottom of beam
- Will pivot 360°
- Installs with hammer only

Static Load Limit: 25 lbs

DIMENSIONS = INCHES

<i>CAT. NO.</i>	<i>FLANGE THICKNESS</i>	<i>FITS EMT</i>	<i>FITS RIGID/IMC</i>	<i>BOX QTY</i>
18190	1/8 TO 1/4	1/2	-	100
18191	1/8 TO 1/4	3/4	1/2	100
18192	1/8 TO 1/4	1	3/4	100