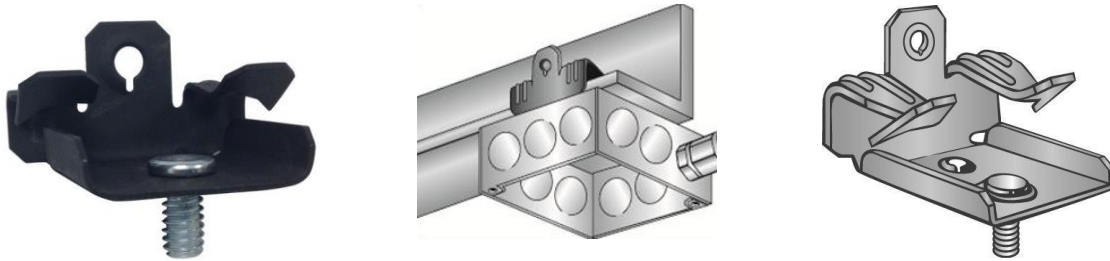




Morris CAT#: 18123-18124
Spring Steel Beam Clamps -
1/4-20 X 3/8" Stud



Features:

- Can be used to suspend boxes, fixtures and bridle rings to beam flanges 1/8" to 3/4"
- Beam clamp with 1/4"-20 x 3/8" staked stud used to suspend box from bottom of beam

Static Load Limit: 75 lbs

DIMENSIONS = INCHES

<i>CAT. NO.</i>	<i>FLANGE THICKNESS</i>	<i>BOX QTY</i>
18123	1/8-1/4	100
18124	5/16-1/2	100