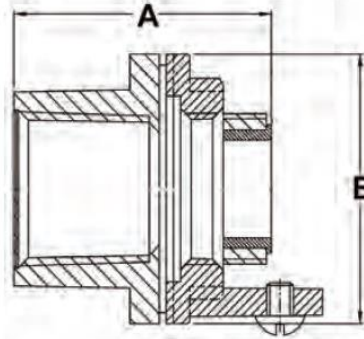




Morris CAT#: 14810-14819
Rigid Water Tight Hubs with Bonding Screw -
Zinc Die Cast



Features:

- Male thread type
- Tapered female thread for Rigid conduit and IMC
- Recessed O-ring seal assures watertight connections
- Insulated throat and bonding locknut is suitable for service entrance application
- Assembled with 105°C rated flame retardant Lexan throat insulator and BUNA-N sealing ring
- UL Listed and CSA Certified for use in wet locations

DIMENSIONS = INCHES

CAT. NO.	TRADE SIZE	DIMENSIONS		INNER BOX	OUTER BOX
		A	B		
14810	1/2"	1.42	1.22	25	250
14811	3/4"	1.61	1.50	25	150
14812	1"	1.87	1.89	25	100
14813	1-1/4"	2.01	2.24	10	60
14814	1-1/2"	2.12	2.52	10	60
14815	2"	2.20	3.03	10	40
14816	2-1/2"	2.64	3.54	-	12
14817	3"	2.64	4.07	-	12
14818	3-1/2"	2.70	4.78	-	6
14819	4"	2.70	5.35	-	6