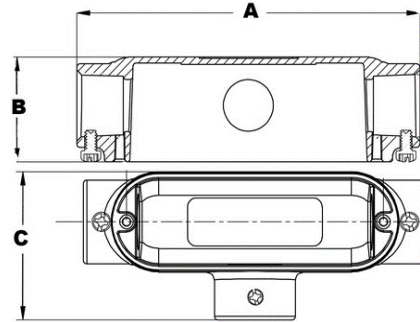
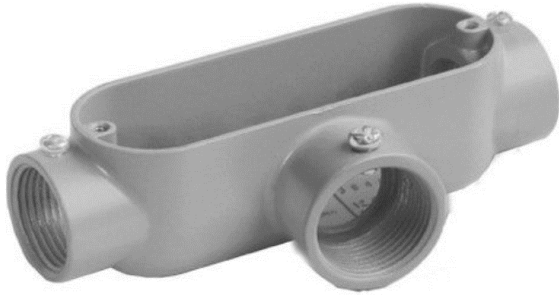




**Morris CAT#: 14252-14257**  
**Aluminum Combination Conduit Bodies**  
**T Type**



**Features:**

- Threaded for Rigid & IMC Conduits
- Set Screw for EMT Conduit
- RainTight when used with Gasketed Covers
- Die-Cast from High-Strength, Corrosion and Weather Resistant Copper Free Aluminum Alloy
- Flat Back Design for easy mounting close to walls
- For use with Rigid, IMC & EMT Conduit
- Cover & Gasket not included

DIMENSIONS = INCHES

CAT. NO.	TRADE SIZE	DIMENSIONS-T SERIES			BOX QTY
		A	B	C	
14252	1/2"	4.72	1.36	2.03	50
14253	3/4"	5.51	1.63	2.30	50
14254	1"	6.46	1.89	2.68	25
14255	1-1/4"	8.35	2.50	3.52	10
14256	1-1/2"	8.35	2.50	3.52	10
14257	2"	10.55	3.41	4.27	10