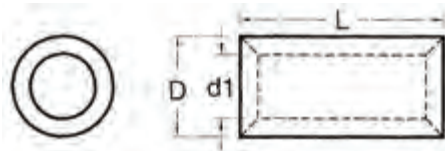




**MORRIS CAT#: 12157-12160**  
**Non-Insulated Parallel Connectors**



**Features:**

Non-Insulated Parallel Connectors features include:

- Non-Insulated Parallel Connector Material: High Strength Electrolytic Tubular Copper
- Electro-Tin Plated for corrosion resistance
- Maximum Electric Current: 22 AWG - 9 Amp, 20 AWG - 12 Amp, 18 AWG - 17 Amp, 16 AWG - 18 Amp, 14 AWG - 30 Amp, 12 AWG - 35 Amp, 10 AWG - 50 Amp
- 302°F(150°C) 600 Volts Max
- cULus Listed
- Dimension Measurements = Inches
- Order Qty of 100 = 1 Bag of 100

**MAXIMUM ELECTRIC CURRENT:**

AWG	22	20	18	16	14	12	10
AMP	9	12	17	18	30	35	50

**MAXIMUM ELECTRIC RATING:** 221°F (150°C) 600V

**CONNECTOR MATERIAL:** Electro-Tin Plated Tubular Copper

DIMENSIONS = INCHES

CAT. NO.	WIRE SIZE AWG	L	D	DI	BAG QTY	MASTER BAG QTY
12157	8	.374	.276	.181	100	-
12158	6	.433	.350	.232	100	-
12159	4	.531	.445	.307	100	-
12160	2	.650	.520	.374	100	-