



**Catalog Number** 11968  
**UPC Number** 60198611968  
**Description** Nylon Fully Insulated Female Disconnect  
 22-16 AWG



**Features**

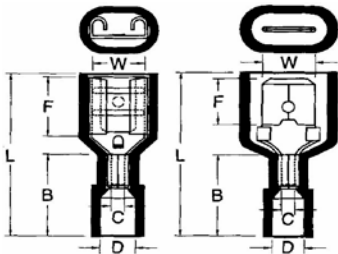
- Nylon Color Coded insulation for easy identification
- Manufactured from high strength copper alloy
- Electro-tin plated for corrosion resistance
- Expanded insulation eliminates strand “Hang Up”, provides strain relief & excellent UV, temperature and chemical resistance
- Wire range stamped on the surface for easy interpretation
- Brazed seams prevent splitting under maximum pressure
- Serrated barrel & extended copper sleeve provides excellent electrical contact & pull-out force resistance.

**General**

**Insulation Type** Nylon  
**Material** Brass/Copper  
**Finish** Electro-Tin Plated  
**Color** Red  
**Wire Range** 22-16  
**Tab Size** .187 X .032

**Dimension Information**

**Stock Thickness** 0.016  
**L Inches (mm)** 0.795  
**B Inches (mm)** 0.433  
**C Inches (mm)** 0.067  
**D Inches (mm)** 0.157  
**F Inches (mm)** 0.256  
**W Inches (mm)** 0.197



**Specifications**

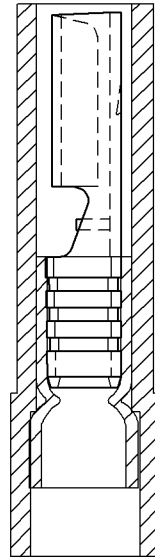
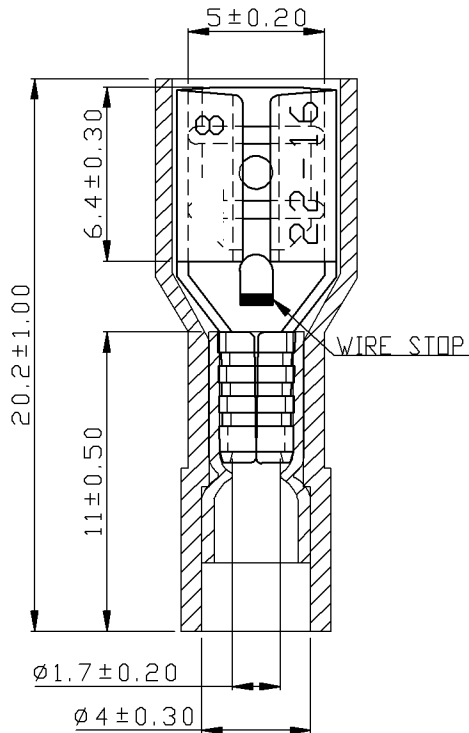
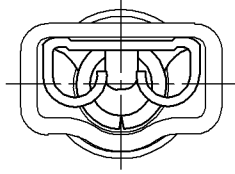
**Temperature Rating** 105°C  
**Voltage Rating** 600 V  
**Flammability Rating** UL94V-O  
**Amp Rating** 22 AWG 3 Amps  
 20 AWG 4 Amps  
 18 AWG 7 Amps  
 16 AWG 10 Amps

**Packaging**

**Bag Qty** 100  
**Master Bag Qty** 1000

**Certifications**

**UL** Yes  
**cUL** Yes  
**RoHS** Yes



NOTE :

1. MAXIMUM ELECTRIC CURRENT : 

A.W.G.	22	20	18	16
AMP.	3	4	7	10
2. MAXIMUM ELECTRICAL RATING : 105°C 600 VOLTS MAX.
3. INSULATION MATERIAL : NYLON
4. INSULATION COLOR : RED
5. TERMINAL MATERIAL : BRASS
6. WIRE RANGE : 22-16 A.W.G. ( 0.5-1.5 mm<sup>2</sup> )
7. NEMA TAB : 0.032 inch \* 0.187 inch ( 0.8 mm \* 4.75 mm )
8. DOUBLE CRIMP : WITH COPPER SLEEVE ON BARREL
9. TERMINAL SURFACE TREATMENT : TIN PLATED
10. TERMINAL THICKNESS : 0.35 mm

Tolerance Unless Otherwise Specified	
0 > 6 mm ± 0.20	ANGLE
6 > 18 mm ± 0.30	0° > ° REF ±
18 > 30 mm ± 0.40	> ° ±
30 > 75 mm ± 0.50	> ° ±

NAME	NYLON-FULLY INSULATED DOUBLE CRIMP FEMALE DISCONNECTORS				UNIT	mm	
PART NO.	11968	MATERIAL	-----	APPROVE			
NUMBER		SCALE	SHEET	PAGE	CHECKED		
DATE	2006/08/25	4/1	1-0	10F2	DRAWN		

Morris Products Inc