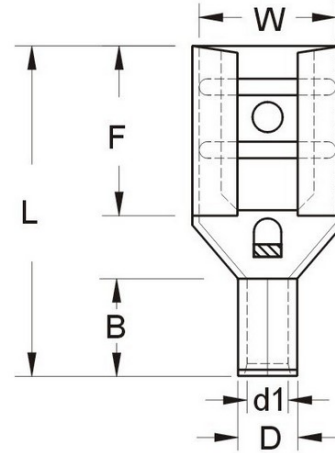




MORRIS CAT#: 10251
Non-Insulated Double Crimp Female
Disconnects 12-10 Wire, .032 x .250 Tab



Features:

Non Insulated Double Crimp Female Disconnects features include:

- Manufactured from High Strength Brass
- Electro-Tin Plated for corrosion resistance
- Brazed Seam
- Wire range stamped on the surface for easy interpretation
- Extended Serrated Barrel provides excellent electrical contact & resistance to pull-out forces
- Double Crimp: Extended Copper Sleeve for Multiple Crimps
- 302°F (150°C) 600 Volts Max
- Maximum Electric Current: 22 AWG - 3 Amp, 20 AWG - 4 Amp, 18 AWG - 7 Amp, 16 AWG - 10 Amp, 14 AWG - 15 Amp, 12 AWG - 20 Amp, 10 AWG - 24 Amp
- cULus Listed
- Dimension Measurements = Inches
- Order Qty of 100 = 1 Bag of 100

MAXIMUM ELECTRIC CURRENT:

AWG	22	20	18	16	14	12	10
AMP	3	4	7	10	15	20	24

MAXIMUM ELECTRIC RATING: 302°F (150°C) 600 Volts

TERMINAL MATERIAL: Electro-Tin Plated Brass - Brazed Seam

DOUBLE CRIMP: Extended Copper Sleeve for Multiple Crimps

FEATURES: Serrated Barrel

DIMENSIONS = INCHES

CAT. NO.	WIRE SIZE AWG	NEMA TAB	W	F	L	B	D	DI	BAG QTY	MASTER BAG QTY
10251	12-10	.032 X.250	.260	.287	.642	.236	.177	.134	100	1,000