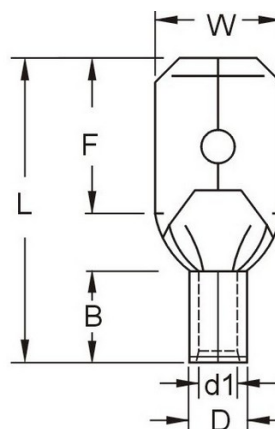




MORRIS CAT#: 10242  
 Non-Insulated Double Crimp Male Disconnects  
 22-16 Wire, .032 x .250 Tab



**Features:**

Non-Insulated Double Crimp Male Disconnects features include:

- Manufactured from High Strength Brass
- Electro-Tin Plated for corrosion resistance
- Brazed Seam
- Wire range stamped on the surface for easy interpretation
- Extended Serrated Barrel provides excellent electrical contact & resistance to pull-out forces
- Double Crimp: Extended Copper Sleeve for Multiple Crimps
- 302°F (150°C) 600 Volts Max
- Maximum Electric Current: 22 AWG - 3 Amp, 20 AWG - 4 Amp, 18 AWG - 7 Amp, 16 AWG - 10 Amp, 14 AWG - 15 Amp, 12 AWG - 20 Amp, 10 AWG - 24 Amp
- cULus Listed
- Dimension Measurements = Inches
- Order Qty of 100 = 1 Bag of 100

**MAXIMUM ELECTRIC CURRENT:**

AWG	22	20	18	16	14	12	10
AMP	3	4	7	10	15	20	24

**MAXIMUM ELECTRIC RATING:** 302°F (150°C) 600 Volts

**TERMINAL MATERIAL:** Electro-Tin Plated Brass - Brazed Seam

**DOUBLE CRIMP:** Extended Copper Sleeve for Multiple Crimps

**FEATURES:** Serrated Barrel

DIMENSIONS = INCHES

CAT. NO.	WIRE SIZE AWG	NEMA TAB	W	F	L	B	D	DI	BAG QTY	MASTER BAG QTY
10242	22-16	.032 X.250	.250	.299	.646	.197	.106	.067	100	1,000