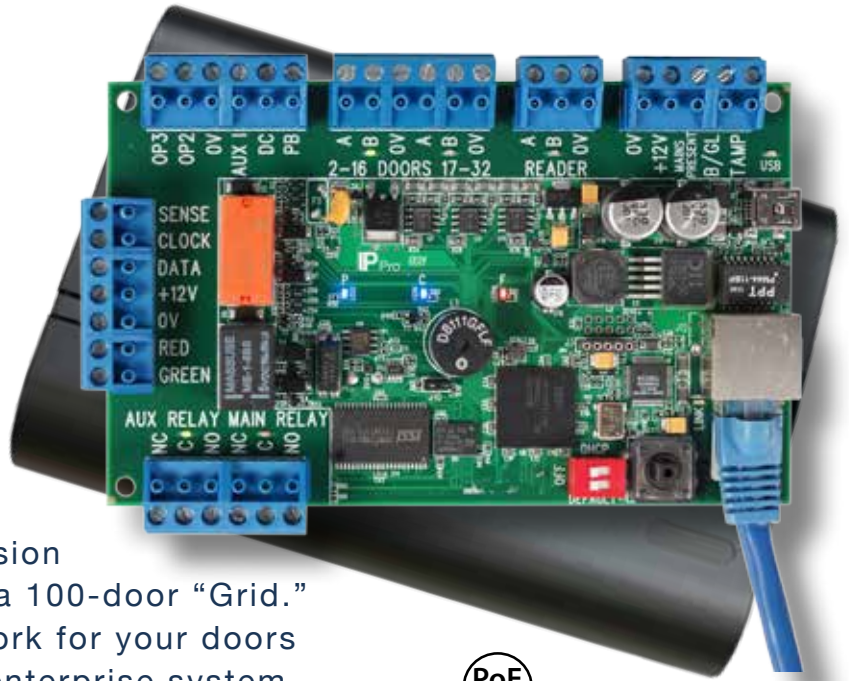




IP-based Access Control

SDC's IP Pro Line of IP-based Access Controllers allows expansion from one Standalone door up to a 100-door "Grid." It's like having a local area network for your doors without all the headaches of an enterprise system.



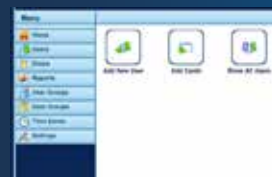
FEATURES

- Controls one door directly, with unlimited expansion capabilities
- TCP/IP communications (100/10Mbps)
- DHCP or Static IP addresses
- Password protected built-in web server or FREE downloadable 'Grid' software
- Live transaction monitoring
- Entry & exit reader capability
- Supports industry standard proximity, smart card, and multi-technology readers (Wiegand output)
- Reader short circuit protection
- Compliant with PoE+ standard
- 15,000 users (up to 2 credentials per user)
- Batch card enrollment
- 250 User groups/Time Zones/Door Groups
- Holiday support
- Scheduled Events
- Temporary Users
- Audit Trail – Up to 5,000 events from on-board storage, unlimited events vis PLUS software (limited only by your allocated server space)
- Status LED's – Power, Communications, & Fault on-board diagnostic indicators
- Anti-tailgating
- Anti-passback (global or localized)
- Supported browsers: Microsoft Internet Explorer, Firefox, Google Chrome
- Multiple credential modes: Card only, PIN only, Pin or Card, Pin & Card
- Door Status Monitoring Input
- Request-to-Exit (REX) Input
- Programmable Auxiliary Input
- Lock Relay Output
- Auxiliary Relay Output
- (2) Programmable Solid-state Outputs
- Tamper Input
- Database backup support

MODELS

- IPDC** IP Pro Controller board only
- IPDCE** IP Pro Controller board plus enclosure
- IPDSE** IP Pro Door Station Expansion board plus enclosure
- IPDS** IP Pro Door Station Expansion board only
- IPPRO-SKE** IP Pro Starter Kit, including Controller board, Splitter and Injector components plus Controller enclosure
- IPPRO-SK** IP Pro Starter Kit, including Controller board, Splitter, Injector
- IPI-30** IP Pro Injector 30W PoE+
- IPS-12** IP Pro Splitter 12VDC PoE+
- IPRW** IP Pro Wiegand Reader - PROX, HID compatible (125 kHz)
- IPRW300** IP Pro Wiegand Reader, Mullion Mount, includes black and white snap-on cover - PROX, HID compatible

Designed for ease of use, the **IP Pro embedded** software allows for real-time monitoring and user management via a web browser.



time monitoring and user management via a web browser.

Or download the free **PLUS** software and run your system through a single PC.



SPECIFICATIONS

IP Pro Controller

/ Door Station Expansion

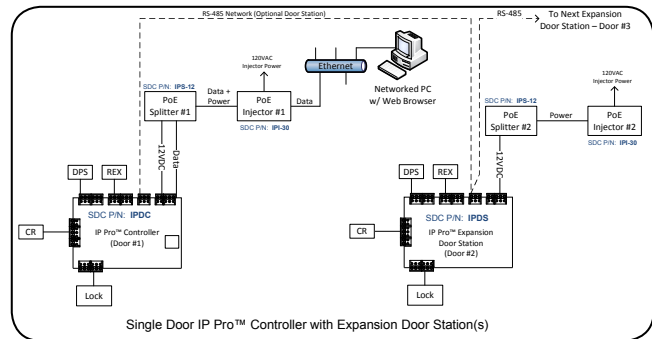
Voltage	12 VDC Input
Current Consumption (max)	250mA - Controller 120mA - Door Station Expansion
Operating Temperature	14°F – 122°F (Indoor use only)
Dimensions	5.375" x 3.5" x 0.875" board only 9.25" x 6.5" x 2.1875" w/ ABS plastic enclosure
Weight	1lb
Relay Output Type	Form C (SPDT) x 2
Relay Contact Rating	Main (Lock) – 5A @ 30VDC Auxiliary – 1A @30VDC
Connections	Digital Inputs: 4 dry contact inputs Ethernet: RJ45 (Controller only) RS-485 Terminal Bus Reader Power – 12VDC Reader Data – Wiegand (26bit to 37bit) Reader LED Control – Red & Green Two Solid State outputs (100mA max)

IP Pro Splitter

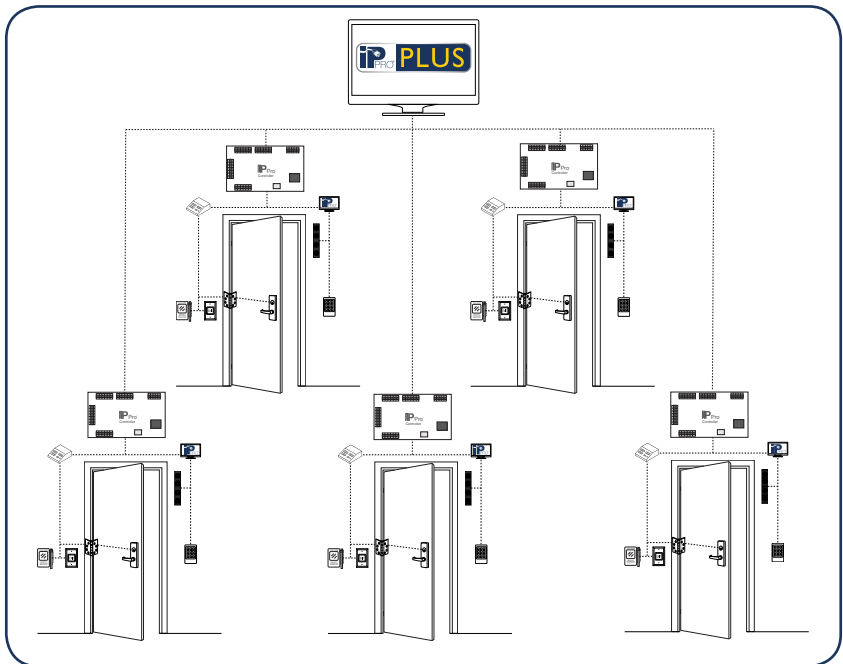
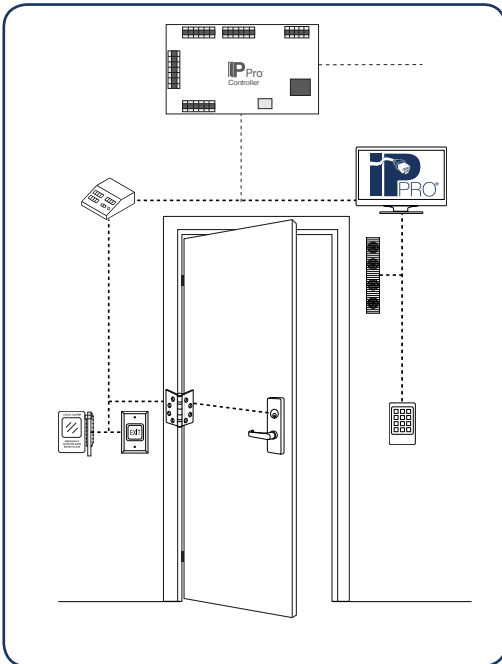
Input voltage	44 - 57 VDC
Input power	30W max
Output power	24W max
Output Current	2A @ 12V

IP Pro Injector

PoE+ Output Pin Assignment and Polarity	4/5 (+), 7/8 (-)
Output Power Voltage	55Vdc
User Port Power	30Watts (Guaranteed)

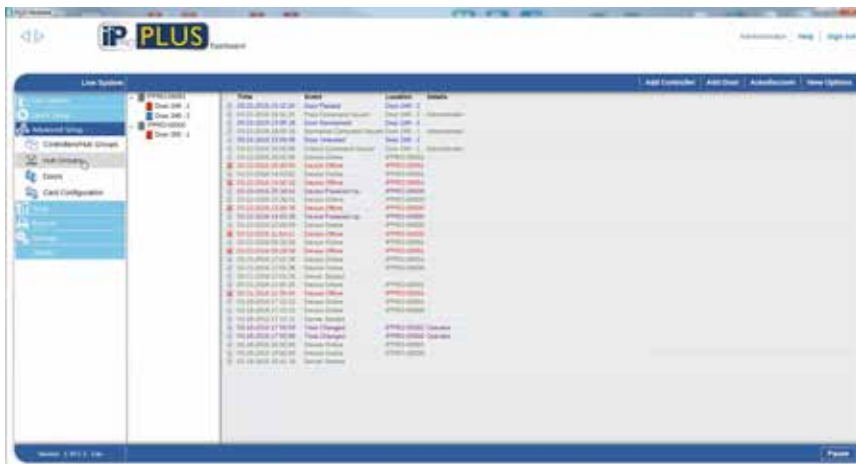


The **IP Pro** Line of IP-based Access Controllers allows expansion from one Standalone door up to a 100-door “Grid.” The Choice is yours! It’s like having a local area network for your doors without all the headaches of an enterprise system.





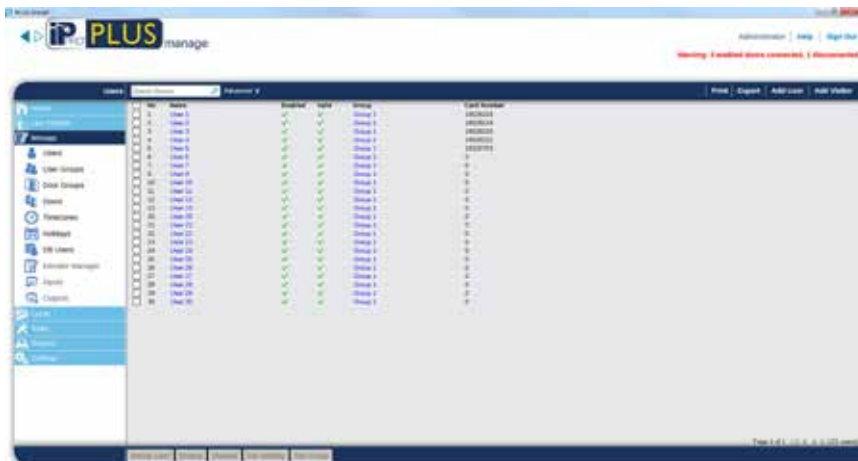
Our new PLUS PC-Client software is available as a free download to provide door access control for up to 100 doors from a single PC. PLUS is a role-based access control software suite with different interface modules, depending on user type.



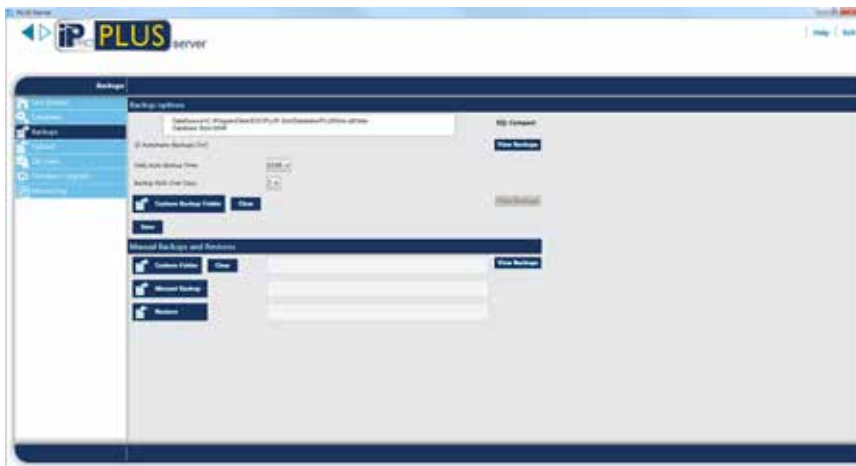
PLUS Hardware is used by the installer to set up controllers, doors and user profiles

- Enable & edit IPPro controllers
- Enable & edit door settings
- Create event filters
- Enable e-mail notifications

PLUS Manage is used by system administrators to facilitate database changes required on a day-to-day basis, and offers various reporting tools



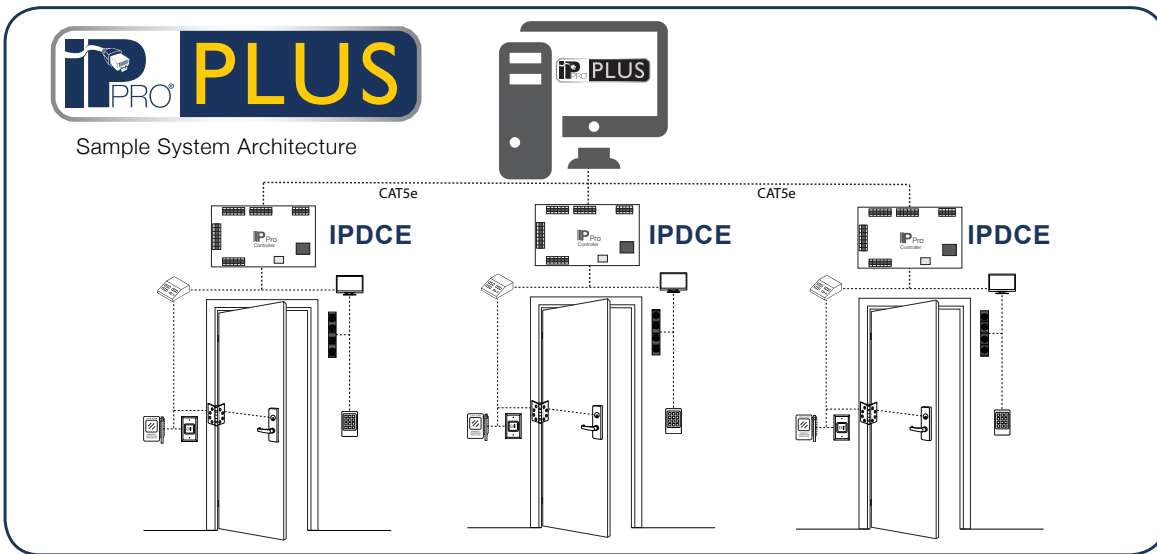
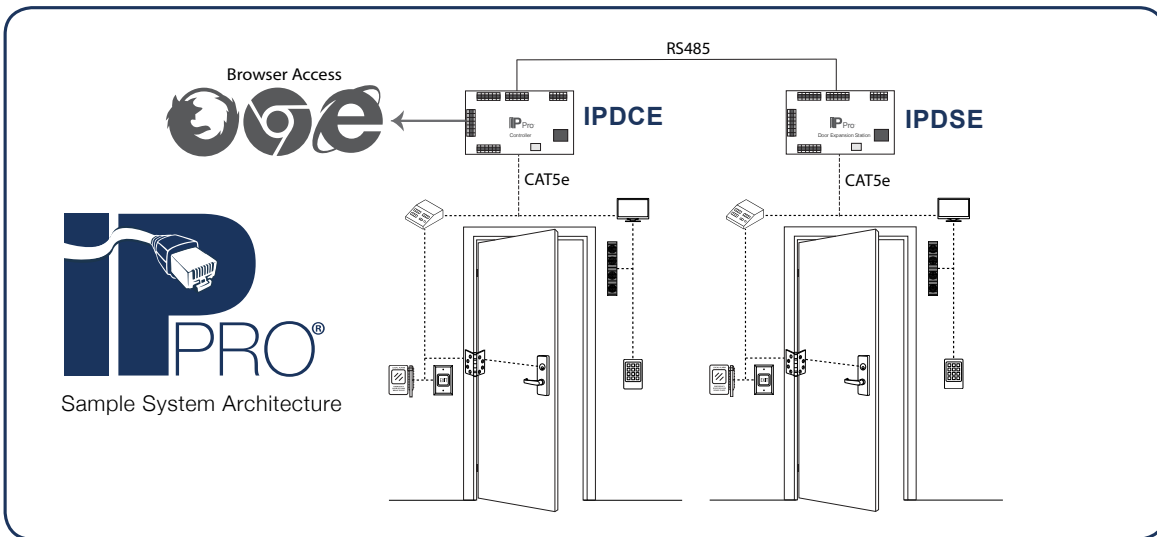
- Create, view, & edit users
- Add access & holiday schedules
- Generate user & event reports



PLUS Server is used by system administrators to perform specialized tasks, such as database backups, firmware updates, importing/exporting users

- Perform manual or schedule automatic backups
- Import/Export Users
- Perform IPPro firmware updates

Live System events can be monitored from either module!



Visit <http://sdcsecurity.com/ippro.htm> to download Systems Operation and Point-to-Point Wire Diagram for common single door low energy applications.

