

# 410 SERIES

Door Closer



**Norton**<sup>®</sup>  
**ASSA ABLOY**

ASSA ABLOY, the global leader  
in door opening solutions

INTRODUCTION

The Norton 410 Series Cast Iron Door Closers provide an attractive retrofit solution for retail, office, government and other commercial facilities. Heavy-duty and hold open arms, along with adjustable spring size, backcheck, closing and latch speed, provide a flexible and economical closer that you can trust. The 410 Series is certified to ANSI/BHMA Grade 1 requirements for long life and reliability, and offers a 10 year warranty.

**Features**

- Adjustable spring sizes 1 - 6
- Cast iron closer body
- Standard and heavy-duty arms available as hold open or non-hold open
- Adjustments for backcheck, closing and latch speed
- Tri-packed for regular, parallel or top jamb installation
- Sleeve nuts and bolts provided with each closer
- Retrofit for LCN 4040/4041
- Non-handed
- Plastic cover
- 10 year warranty

**Functions**

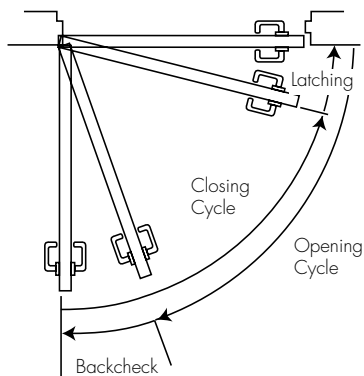
- Backcheck
- Closing speed
- Latching speed
- Delayed Action (optional)

**Compliance Standards**

- Certified for ANSI/BHMA A156.4 Grade 1 
- UL/cUL listed for use on fire rated doors 
- UL10C listed for positive pressure fire test
- Meets requirements for Americans with Disabilities Act (ADA) and ANSI/BHMA A117.1 



**Door Closing Latching Cycle**



**Arms**

**Non-Hold Open<sup>^</sup>**

Self-closes door every time door is opened. Auxiliary stop (by others) required except when using the Holder/Stop arm.

**Hold Open**

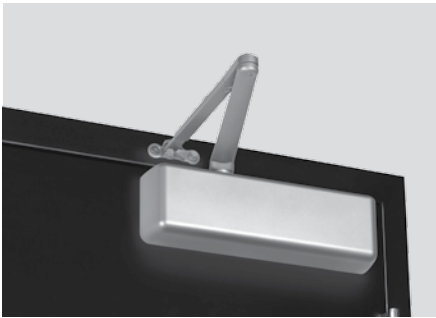
Achieved by means of friction or ball and detent/roller. Friction hold open has a range of 90° to 180° using template location and mechanical adjustment. Ball and detent or roller hold open is effective in a range of 85° to 110°.

<sup>^</sup>Hold open arm door closers are not permitted to be used on fire door assemblies.

TABLE OF CONTENTS

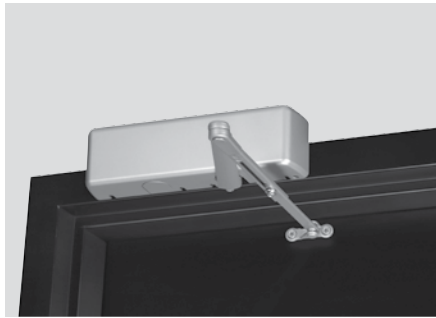
Applications . . . . .	3
Model/Part Numbers . . . . .	4
Accessories . . . . .	4
How To Order . . . . .	5

APPLICATIONS



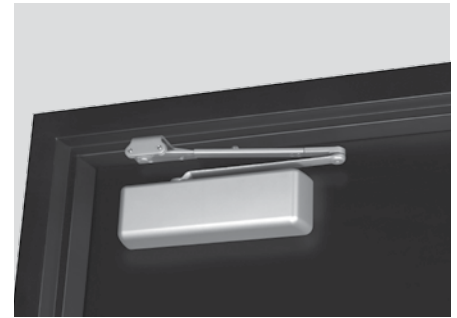
*TPN arm shown (regular mounting)*

- Pull-side application
- Closer mounted on the door



*TPN arm shown (top jamb mounting)*

- Push-side application
- Closer mounted on the frame
- Minimum top rail = 2-1/4" (57mm)
- Maximum frame reveal = 2-3/4" (70mm)



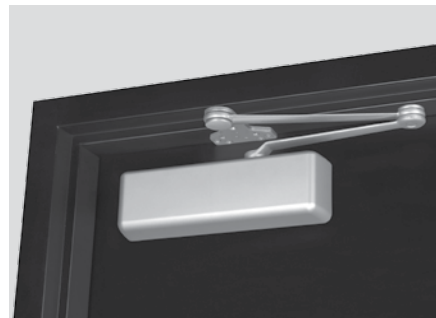
*TPN arm shown (parallel mounting)*

- Push-side application
- Closer mounted on the door

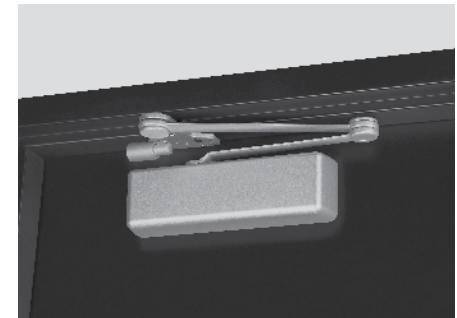


*HDH arm (with stop) shown*

- Push-side application
- Heavy-duty arm
- Stop is removable



*HDN arm (without stop) shown*



*CPS arm shown*

- Push-side application
- Heavy-duty arm
- Buffer spring provides greater protection at the end of door opening cycle
- Spring is removable

NOTE: Arms are not interchangeable with Norton's premium line of closers

MODEL/PART NUMBERS

Model #	Description
410xTPN	Non-Hold Open, Tri-Packed
410DAxTPN	Non-Hold Open, Delayed Action, Tri-Packed
410xTPH	Hold Open, Tri-Packed
410xHDN	Heavy-Duty, Non-Hold Open with Removable Stop
410xHDH	Heavy-Duty, Hold Open with Removable Stop
410xCPS	Heavy-Duty, Non-Hold Open with Removable Stop and Spring Buffer
410xCPST	Heavy-Duty, Hold Open with Removable Stop and Spring Buffer



Miscellaneous Parts\*

Part Number	Description
410COV	Cover
SP410	Screw Pack
CPSK6770	CPS Kit



CPS Kit

\*Specify finish when ordering.

Optional Fasteners

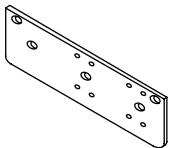
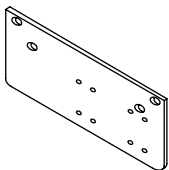
Part Number	Description
SN-134	Sleeve Nuts
TBGN134-47	Through-Bolts & Grommet Nuts

Note: Sleeve nuts furnished standard with all models.

Cover Dimensions		
Width	Length	Projection
3-1/2" (89mm)	12-1/4" (311mm)	2-1/4" (57mm)

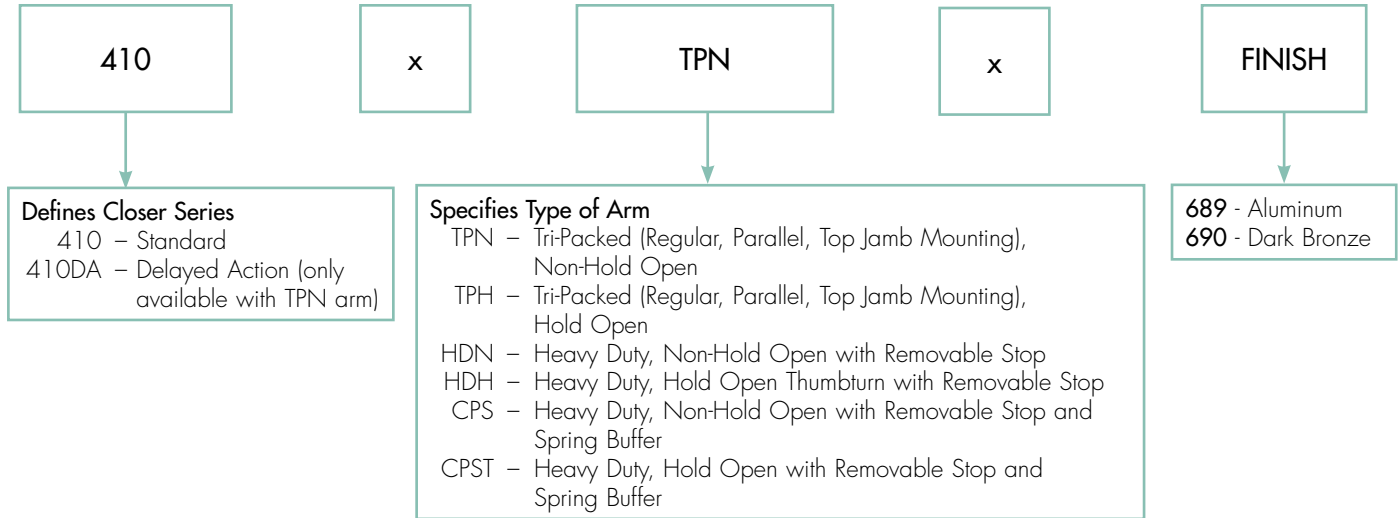
ACCESSORIES

Closer Mounting Plates

	410RDP Narrow Frame Drop Plate (regular arm): Required for hinge side mount where top rail is less than 3-3/4" (95mm). Plate requires 2" (51mm) minimum top rail.
	410PDP Narrow Top Rail Drop Plate (parallel arm): Required for parallel arm mounting where top rail is less than 5-1/2" (140mm), measured from the stop. Plate requires 2" (51mm) minimum top rail.

Note: All measurements are Inches/mm.

## HOW TO ORDER



### Notes:

- Warranty becomes void if door closer is installed on the exterior side of a door in the exterior wall of a building.
- It is strongly recommended, and required on fire door assemblies, that doors having a door closer be hung on ball bearing or anti-friction hinges or pivots; unless an alternate method is identified in the door manufacturer's listing.
- Failure to use the correct type and size fasteners may void factory warranty.
- Fasteners for fire/smoke door assemblies must conform to NFPA 80. In some applications additional fasteners may be mandated by NFPA 80 that are not shipped with standard Norton® product, such as sleeve-nuts/sex-nuts or through-bolts and grommet nuts.
- Contact factory if door weight exceeds 250 lbs.

CONTACT US AT:

Norton Door Controls  
3000 Highway 74 East  
Monroe, NC 28112  
Tel: 877-974-2255  
Fax: 800-338-0965

ABLOY Door Security Solutions Canada  
160 Four Valley Drive  
Vaughan, Ontario, L4K 4T9 Canada  
Tel: 800-461-3007  
Fax: 905-738-2478

For a complete listing of products and  
applications please visit our web site.  
[www.nortondoortcontrols.com](http://www.nortondoortcontrols.com)  
[www.assaabloy.ca](http://www.assaabloy.ca)

Norton® is a registered trademark of Yale Security Inc., an ASSA ABLOY Group company. These materials are protected under U.S. copyright laws. All contents current at time of publication. Norton is a brand associated with Yale Security Inc., an ASSA ABLOY Group company. Copyright © 2016, Yale Security Inc. All rights reserved. Reproduction in whole or in part without the express written permission of Yale Security Inc. is prohibited.