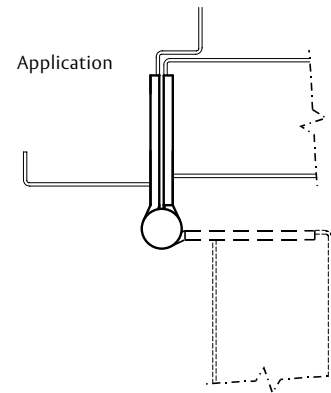


MACPRO® Adjustable Spring Hinge

MacPro by McKinney offers contract grade hinges to get the job done right. They are a key player in very competitive jobs, especially in the retrofit arena.

- Recommended for standard weight hinge applications requiring self-closing control, such as apartments, hotels, motels, dormitories, office buildings, etc
- Spring hinges are an alternative to door closing devices. Generally two hinges on the door must be spring hinges to provide adequate closing force NFPA requires a minimum of two (2) spring hinges on labeled doors
- MPS679 - Set of two MPS60 spring hinges and one MPB79 full mortise butt hinge
- MacPro by McKinney templated hinges are made to conform to ANSI/BHMA 156.1, 156.7, 156.17
- Finishes available: P (prime coat) and US26D

MPS60
MPS679



No.	Base Material	Weight
MPS60	Steel	STD
MPS679	Steel	STD

Specifications

Inches	mm	Gauge	No. of Holes	Fasteners	
				Machine	Wood
4 1/2" x 4 1/2"	114.3 x 114.3	.134	8	1/2" x 12-24	1 1/4 x 2

ASSA ABLOY

The global leader in door opening solutions