

FALCON®

SC80 Series

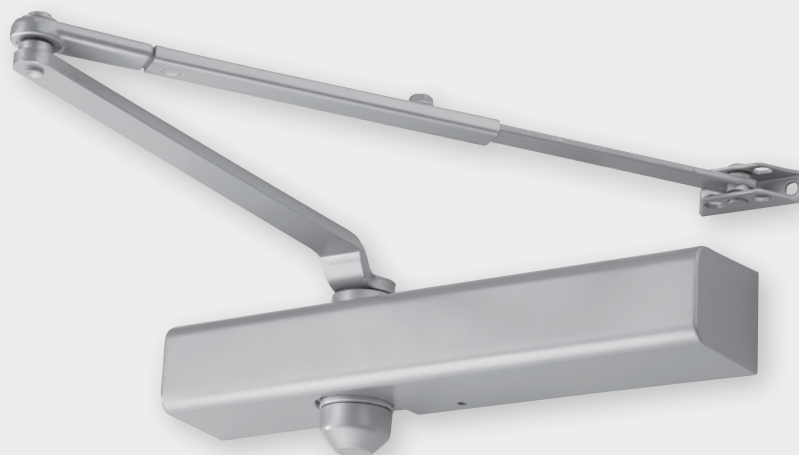
Medium duty, Grade 1 door control

Overview

The Falcon® SC80 Series is perfect for medium duty applications like retail storefronts, institutional storerooms and clinics in order to make door operations smooth and secure. The SC80 Series brings Grade 1 durability and reliability to interior and exterior aluminum storefronts. An adjustable design ensures flexible installation and ADA compliance. The Falcon SC80 Series provides a solid product at a solid price.

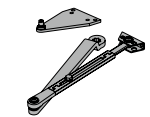
Features and benefits:

- Meets ANSI A117.1
- UL Listed
- 1 1/4" diameter piston
- Fully adjustable sizes 1-6
- Single piece cast aluminum body
- Non-handed for left or right swinging doors
- Separate adjustable general speed, latch speed and backcheck
- Heat-treated steel piston
- Heat-treated pinion
- UL 10C approved fluid
- Universal screw pack
- 10-year warranty

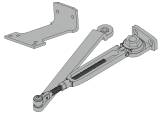


The right accessories for every job

The non-handed design of the SC80 Series, paired with its mounting position versatility, means you can install this closer just about anywhere depending on the needs of the door opening. A host of arm types and accessories makes it easy to fit the demands of a variety of applications.



Regular (RW/PA)



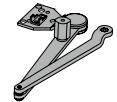
Hold open (HW/PA)



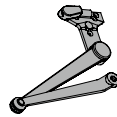
Heavy-duty regular (HD/PA)



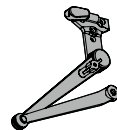
Dead stop (DS)



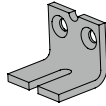
Dead stop hold open (DS/HO)



Spring-n-Stop (SS)

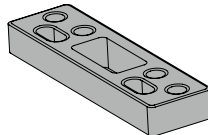


Spring-n-Stop hold open (SS/HO)



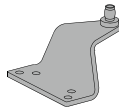
Soffit shoe support

Provides anchorage for fifth screw used with soffit shoe where reveal is less than 3 1/16" (78mm).



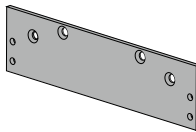
Blade stop spacer

Required to lower parallel arm shoe to clear 1/2" (13mm) blade stop.



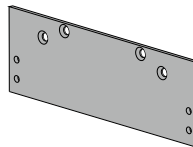
Auxiliary shoe

Requires a top rail of 7" (178mm). Optional shoe replaces PA shoe for parallel arm mounting of regular arm with overhead holder/stop.



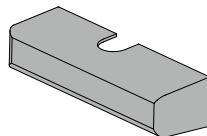
Plate

Required for top jamb mounting where head frame is less than 1 3/4" (44mm).



Parallel arm plate

Required for parallel arm mounting where top rail is less than 4 3/8" (111mm) for PA, 4 1/4" (108mm) for HD and DS, measured from the top. Plate requires 2 3/8" (60mm) minimum top rail measure from stop.



Cover

Optional, non-handed, slim line plastic cover.

Available finishes



689 Aluminum



695 Dark bronze



696 Brass

About Allegion

Allegion (NYSE: ALLE) creates peace of mind by pioneering safety and security. As a \$2 billion provider of security solutions for homes and businesses, Allegion employs more than 8,000 people and sells products in more than 120 countries across the world. Allegion comprises more than 25 global brands, including strategic brands CISA®, Interflex®, LCN®, Schlage® and Von Duprin®. For more, visit www.allegion.com.