

FALCON®

SC60 Series

Door closers

Overview

When you need a dependable closer for a light or medium-duty commercial application like a small boutique or office, the Falcon SC60 Series fits perfectly. Designed for interior use with an aluminum storefront, the SC60 Series offers ANSI Grade 1 durability backed by a ten-year warranty. Since the SC60 has the most common hole pattern in the industry, it's a versatile and easy choice for retrofit. The SC60 is another great example of how Falcon provides a solid product with solid performance at a solid price.



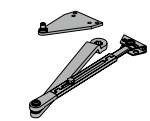
Fully adjustable and tremendously versatile

We've streamlined the SC60 Series into a single device with a fully adjustable spring size 1 – 5. That means fewer SKUs to stock and easier ordering. This economic and flexible door control solution is ideal for a variety of commercial applications, delivering safe door control and enhanced security. Updates include:

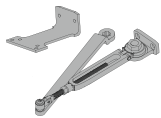
- Fully adjustable 1 – 5
- Easy retrofit to Norton 1600 hole pattern
- Meets ANSI A117.1
- ANSI/BHMA A156.4, Grade 1
- Non-handed for left- or right-swinging doors
- 10-year warranty
- Single-piece, cast aluminum body
- UL 10 C

The right accessories for every job.

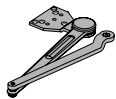
The non-handed design of the SC60 Series, paired with its mounting position versatility, means you can install this closer just about anywhere depending on the needs of the door opening. A host of arm types and accessories make it easy to fit the demands of a variety of applications.



Regular



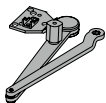
Hold open



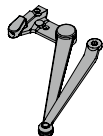
Heavy-duty regular



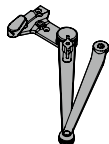
Dead stop



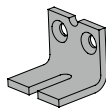
Dead stop hold open



Spring-n-Stop

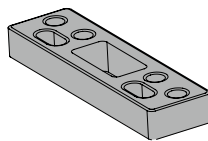


Spring-n-Stop hold open



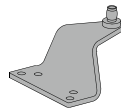
Soffit shoe support

Provides anchorage for fifth screw used with soffit shoe where reveal is less than 3 1/16" (78mm).



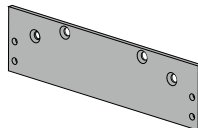
Blade stop spacer

Required to lower parallel arm shoe to clear 1/2" (13mm) blade stop.



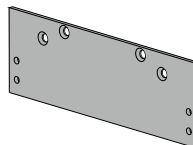
Auxiliary shoe

Requires a top rail of 7" (178mm). Optional shoe replaces PA shoe for parallel arm mounting of regular arm with overhead holder/stop.



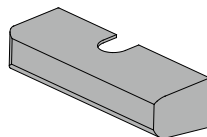
Plate

Required for top jamb mounting where head frame is less than 1 3/4" (44mm).



Parallel arm plate

Required for parallel arm mounting where top rail is less than 4 3/8" (111mm) for PA, 4 1/4" (108mm) for HD and DS, measured from the top. Plate requires 2 3/8" (60mm) minimum top rail measure from stop.



Cover

Optional, non-handed, slim line plastic cover.

About Allegion

Allegion (NYSE: ALLE) creates peace of mind by pioneering safety and security. As a \$2 billion provider of security solutions for homes and businesses, Allegion employs more than 8,000 people and sells products in more than 120 countries across the world. Allegion comprises more than 25 global brands, including strategic brands CISA®, Interflex®, LCN®, Schlage® and Von Duprin®. For more, visit www.allegion.com.