

SCREW TYPE / BOLT TYPE LOCKS

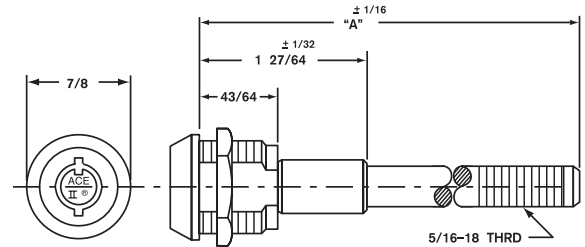
ACE II® SEVEN PIN TUMBLER SCREW TYPE



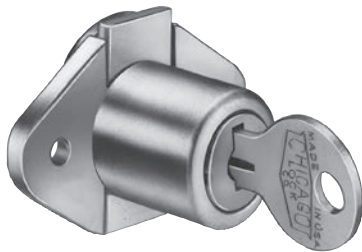
CSA4107

- Ace II® lock assembly in 3/4" diameter.
- Barrel with two flats — 5/8" across.
- 360° key rotation with keypull every 180° (12 and 6 O'Clock).
- Two keys per lock.
- Includes body nut.
- Additional stud lengths available to special order. Minimum order and extended lead time may apply.
- D137-CLC key blank.

Lock No.	"A" Dim.	KA Codes	KD Changes
CSA4107	7 1/32"	7341	200

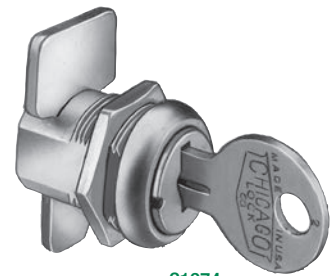


BOLT TYPE



C1968

- Five disc tumbler.
- Removable plug feature.
- Steel locking bolt.
- Two keys per lock.
- DK-5 key blank.



C1974

Lock No.	"A" Dim.	"D" Dim.	KA Codes	KD Changes
C1968	57/64" 22.6mm	15/32" 29.6mm	1289 1454	200
C1974	19/32" 15.1mm	27/32" 21.4mm	1289 1454	200
C1975	21/32" 16.7mm	57/64" 22.6mm	1289 1454	200

