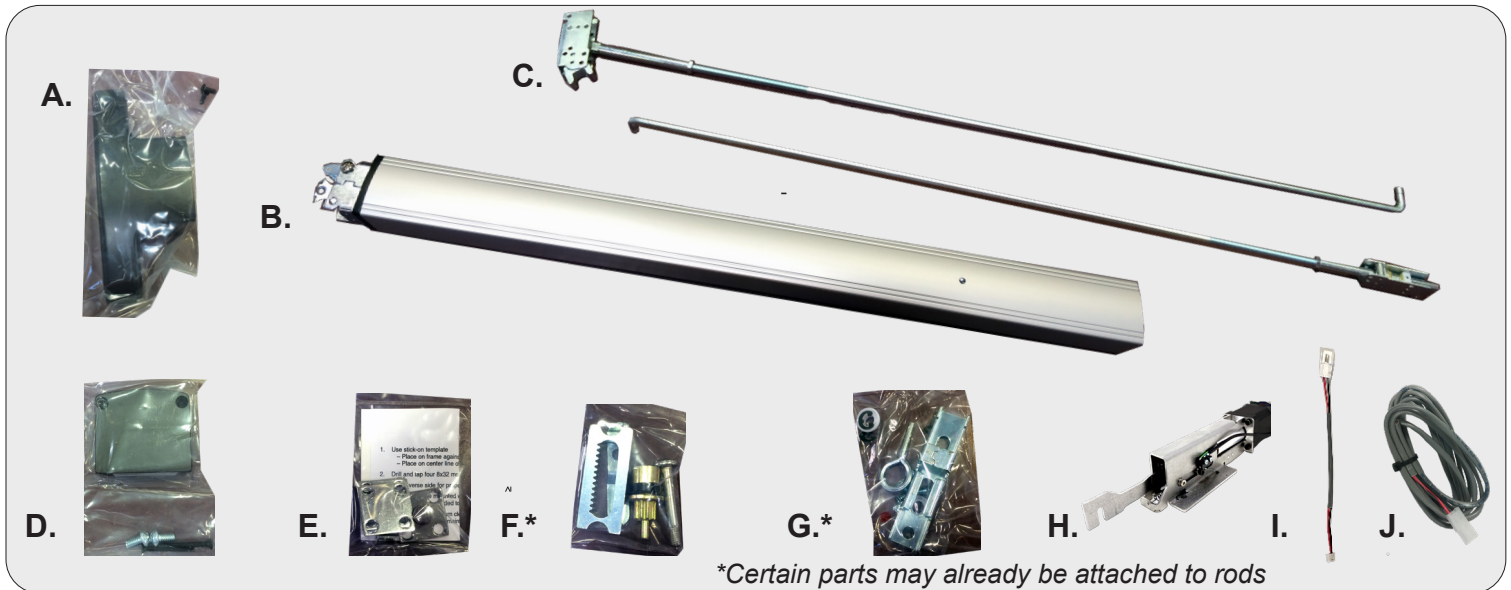


# PD10-M-CVR



## INSERT INSTRUCTIONS

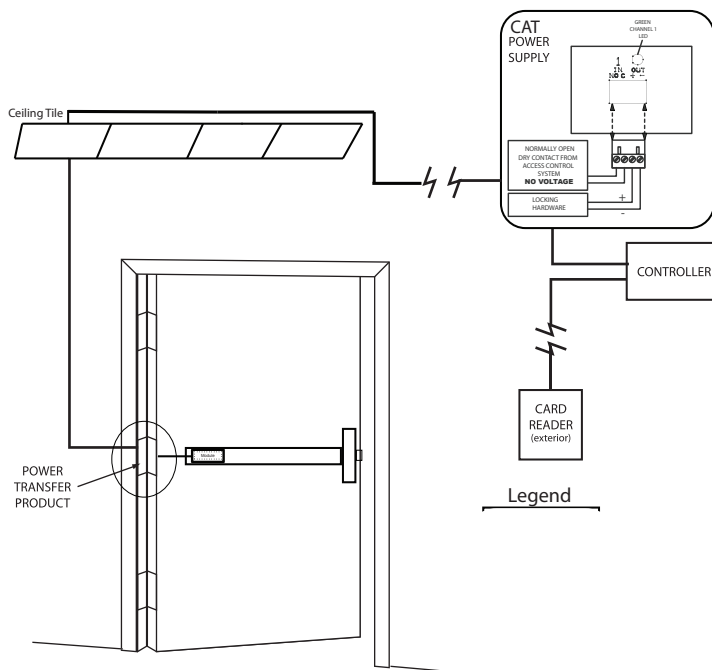
The PD10-M-CVR is a storefront grade 1 exit device equipped with motor drive latch retraction. Retrofits Doromatic 1690 & First Choice 3690.



## KIT INCLUDES | TOOLS REQUIRED

- A. Head Cover pack
- B. CVR Exit Device
- C. Concealed Vertical Rods
- D. Hinge Stile End Cap pack
- E. Strike pack
- F. Retractor & Pinion pack
- G. Traveler pack
- H. MOTOR KIT - Installed in exit device
- I. 1- 50944 Molex Pigtail
- J. 1- 50030 8' Lead w/ VD Connector

- Cordless Drill
- Needlenose Pliers
- Measuring Tape
- 1/2 Drill bit

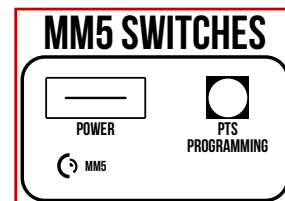

**PTS VIDEO**


## SETTING PUSH TO SET (PTS)

**\*\*IMPORTANT INFO\*\***

**MAKE SURE TO SET PTS BEFORE FINISHING INSTALLATION**

- STEP 1 -** To enter PTS mode: Depress MM5 button & apply power. The device will emit 1 SHORT beep. The device is now in PTS mode.
- STEP 2 -** While depressing the push pad, apply power. (i.e. presenting the credential to the reader).
- STEP 3 -** Continue to keep pad depressed, the device will emit 1 LONG Beep. After the beep has stopped, release the pad and now the adjustment is complete. test the new location, If not to your liking repeat the 3 steps.

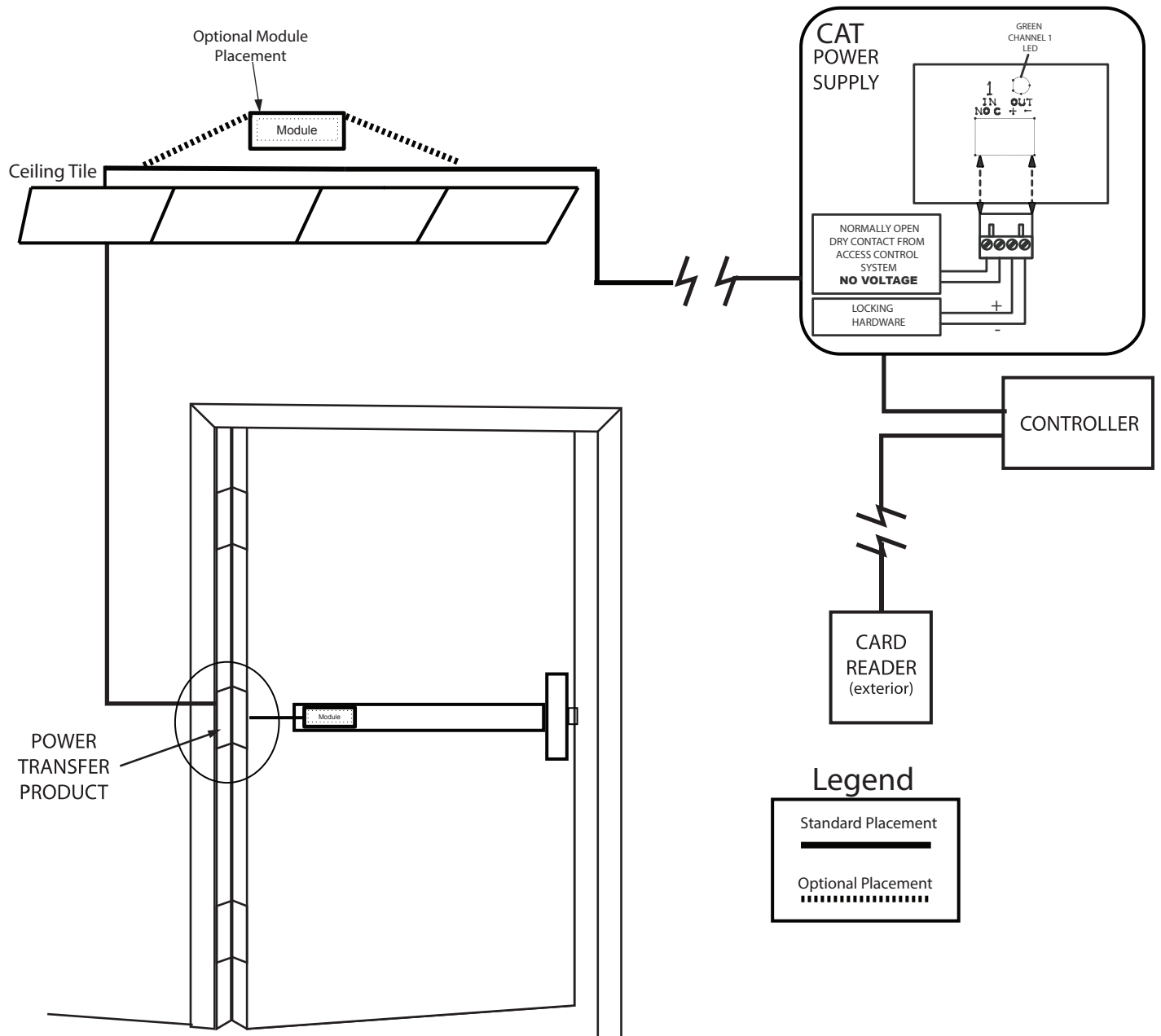


## TROUBLESHOOTING & DIAGNOSTICS

BEEPS	EXPLANATION	SOLUTION
2 Beeps	Over Voltage	> 30V unit will shut down. Check voltage & adjust to 24 V.
3 Beeps	Under Voltage	< 20V unit will shut down. Check voltage & adjust to 24 V.
4 Beeps	Failed Sensor	Verify all 3 sensor wires are installed correctly. Replace sensor if problem persists by contacting office.
5 Beeps	Retraction or dogging failure	After 1st fail: 5 beeps then immediately attempts to retract again. After 2nd fail: 5 beeps with pause in-between for 30 seconds then device attempts to retract again. After 3rd fail: 5 beeps every 7 minutes, device will not attempt to retract. To Reset: Depress bar for 5 seconds at any time.

# Electrified Exit Device

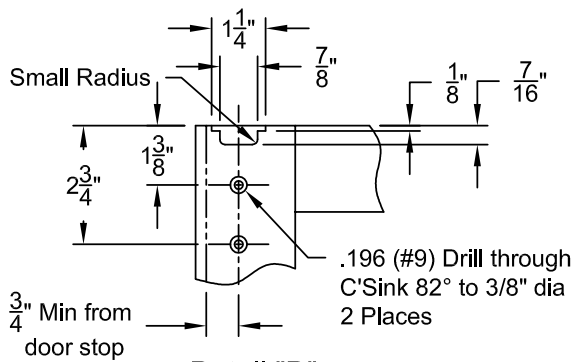
## Installation Example



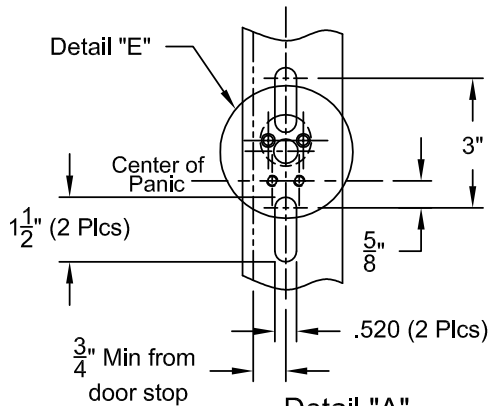
# Concealed Vertical Rod

## For Bottom Rod Latch Installation Template

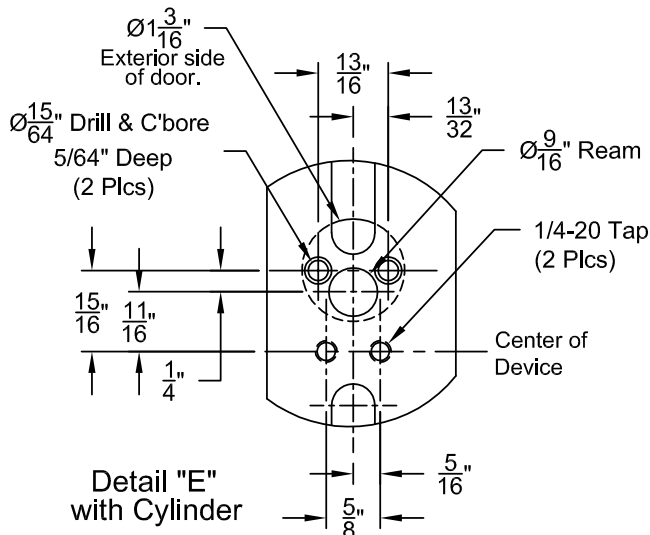
All prep is shown on interior side of the door,  
except where noted.  
Right hand door shown. (LHR)



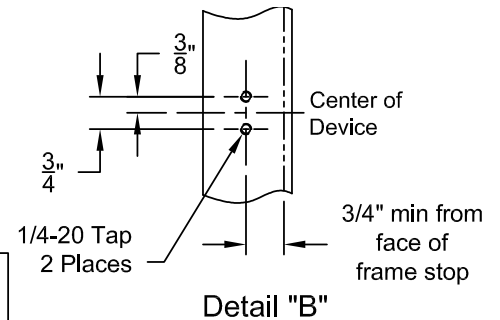
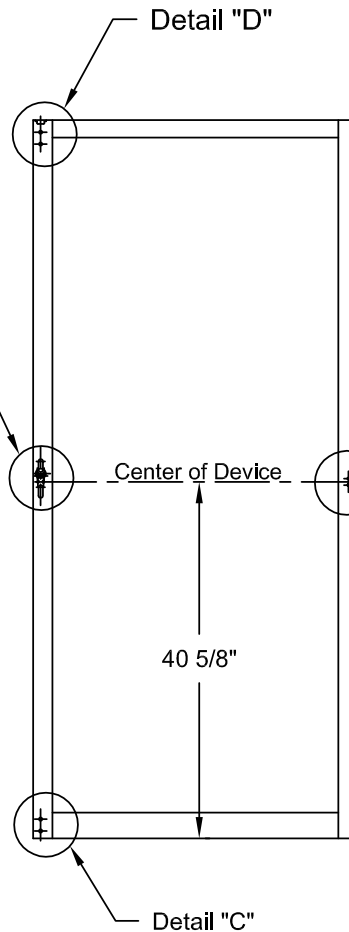
**Detail "D"**  
Top Latch  
Cutout inside face only!



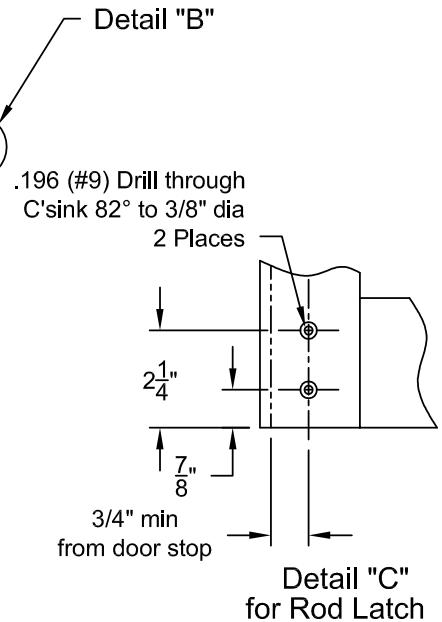
**Detail "A"**



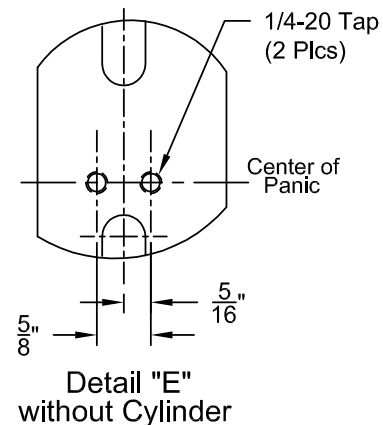
**Detail "E"**  
with Cylinder



**Detail "B"**



**Detail "C"**  
for Rod Latch

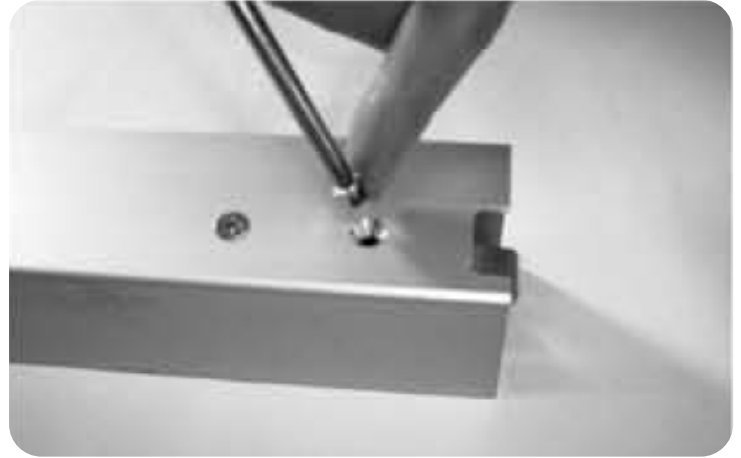


**Detail "E"**  
without Cylinder

## **STEP 1 - Install Vertical Rods**

(Rods are factory preset for door height of 83 3/16 and a cylinder location of 41 5/16- see page 9 for additional details.)

- A. Install top latch mechanism using 2 ea. #10-31X1/4 screws.



- B. Affix bent end of rod on door using rod bushing with "E" ring.



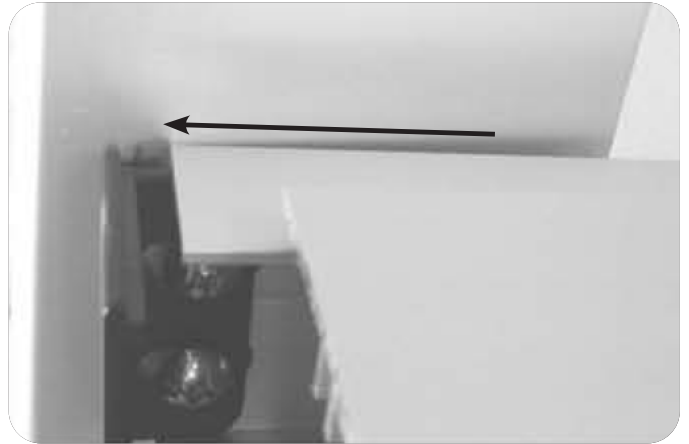
- C. Install bottom rod assembly in the same manner as above.

## **STEP 2 - Mount Exit Device**

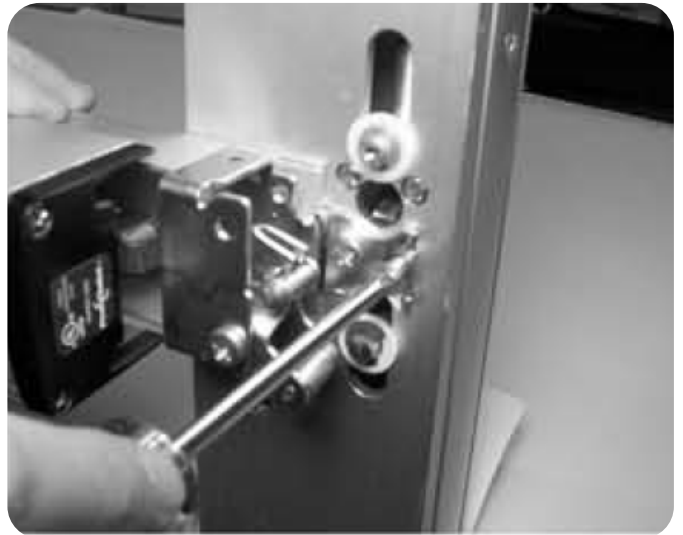
- A. Install the stile mounting bracket with 2 ea. 1/4-20 x 1/2 pan head screws. Leave space to capture the base of the device. (See next slide)



- B. Slide the end of baserail underneath the mounting bracket.



- C. Attach head of device to stile with 2 ea. 1/4-20x1/2 flat head screws. Tighten screws on the head and tail of the device.

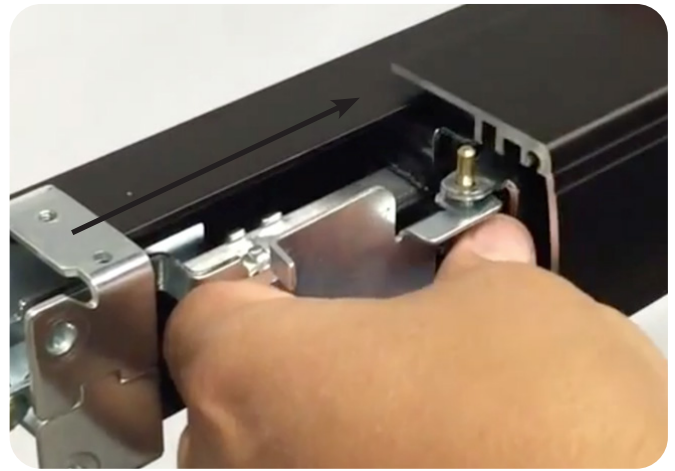


## **STEP 3 - Drill Wire Chase**

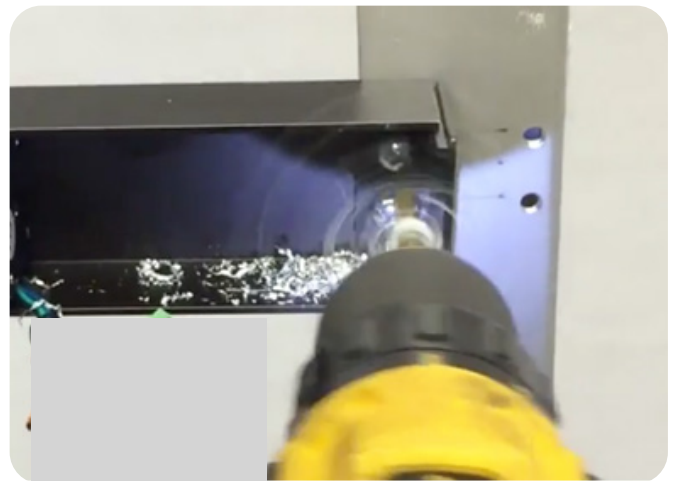
- A. Remove lock stile end cap.



B. Slide push pad off of baserail.



C. Drill the hole for our 2 pin power lead in-between the 2 mounting screws.



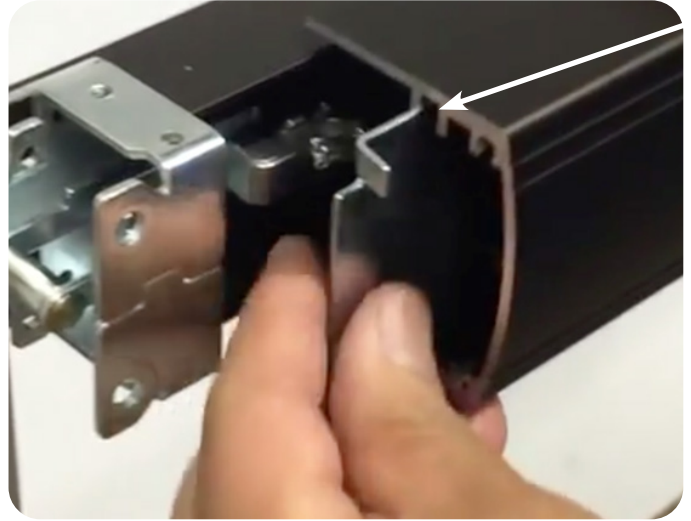
D. Feed the 2 pin power lead into the hole and connect to our MM4 module. Also, make sure to clean out any debris left.



Note: Depending on where your power transfer is; next you would fish the other side of the power lead we connected to the MM5 and hook up to your incoming power. If you have a portable tester this would be a good time to test fire the motor.



- E. Replace push pad, making sure the activating brackets and pins slide through the 3<sup>rd</sup> channel.

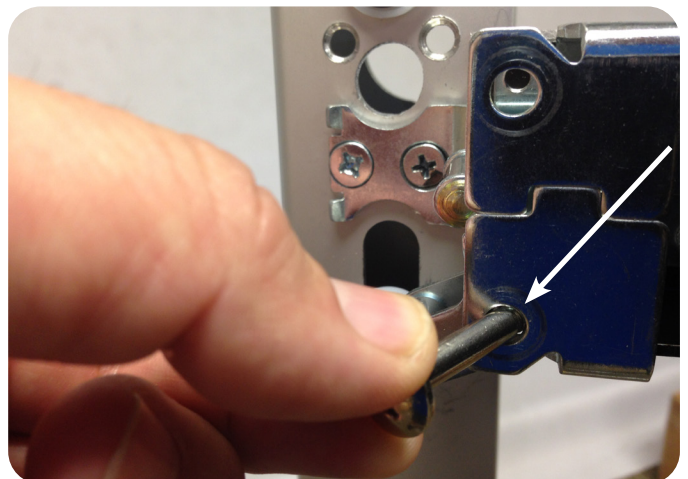


- F. Reinstall the lock stile end cap.



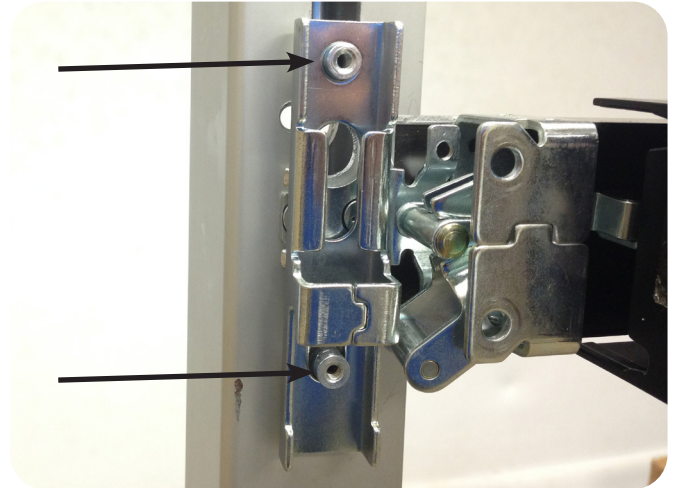
## **STEP 4 - Attach Vertical Rods**

- A. Before installing the traveller. Remove Axle screw, allowing the lifting arm to relax and move out of the way.

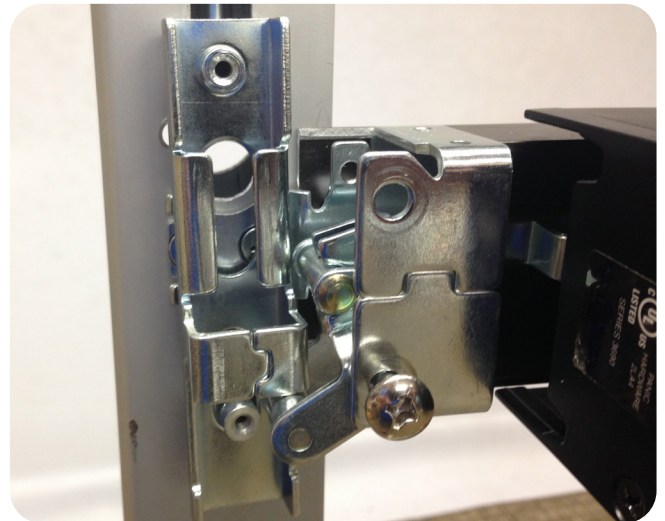




- B. Install Traveller onto the bent end of the vertical rods.



- C. Re-install Axle screw and tighten.



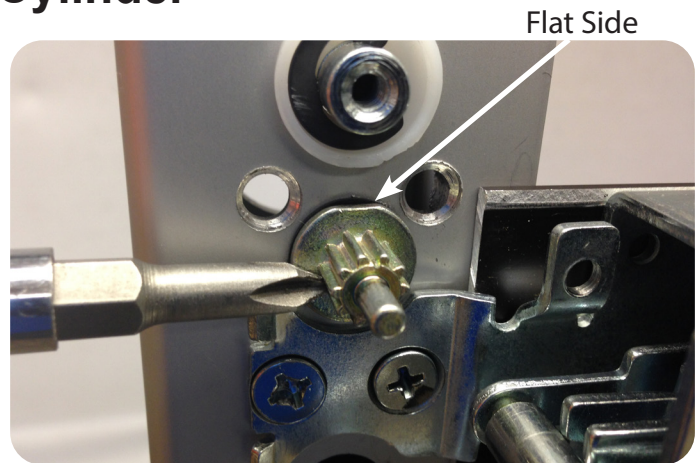
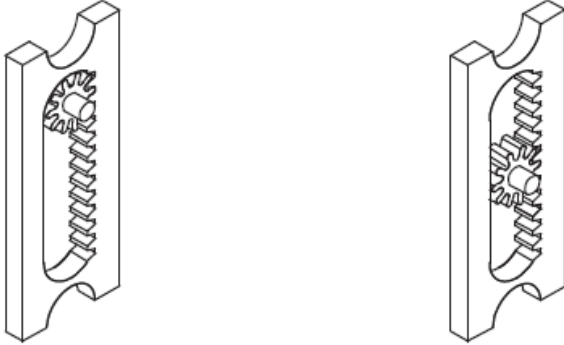
- D. Install Pinion support bracket and tighten retainer screw.



## Optional STEP - Installing Cylinder

- A. Place Pinion with black cylinder bushing into the door with the cylinder tail piece sliding into the back of the pinion.

Flat side of pinion facing up.



### **Hold back (HB)      Night latch (NL)**

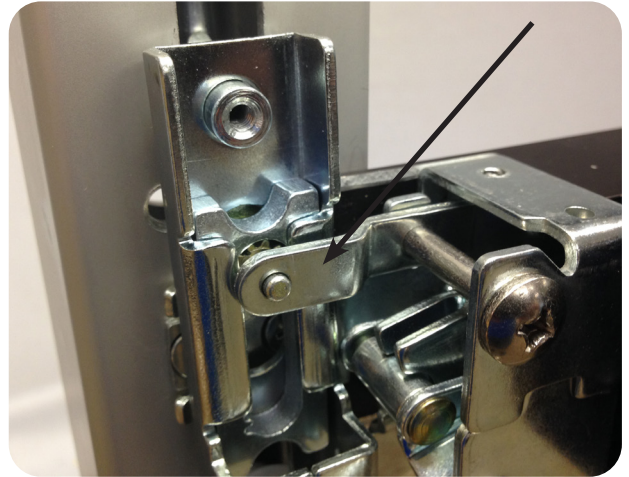
- B. Add Retractor and Traveller lift bracket. Pick placement of pinion depending on desired function.



- C. Reinstall Axle screw and tighten.

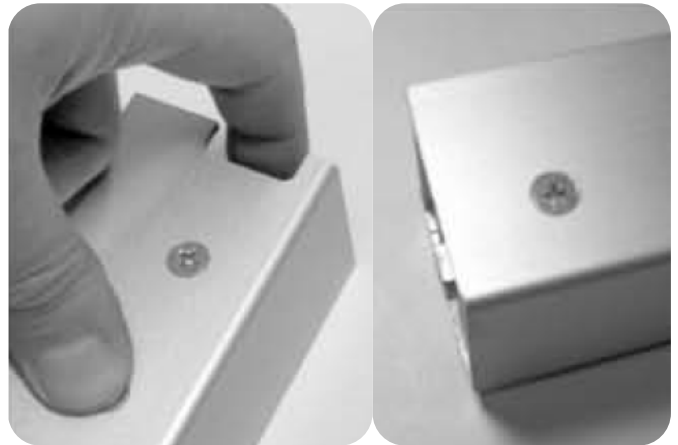


- D. Install Pinion support bracket and tighten retainer screw.



## **STEP 4 - Continued**

- A. -Check Top Rod operation.  
When push pad is depressed fully, top latch should open and allow top strike to pass, and swing freely.
- Check Bottom Rod operation.  
The bottom latch should not protrude more than 1/16 inch below the bottom of the door when the push pad is depressed.



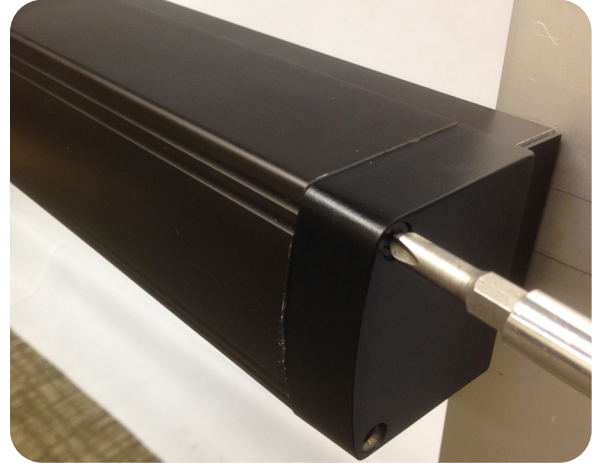
- B. Install head cover with 2 ea. 10-32 x 3/8 screws.





- C. Install hinge stile push pad cover with 2 ea. 8-32 x 1 1/2" screws. Now you set you latch retraction adjustment with our "PTS" technology.

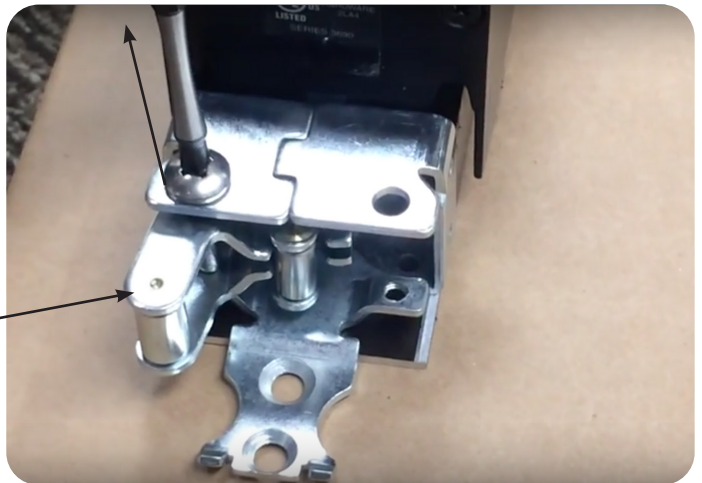
See page #2



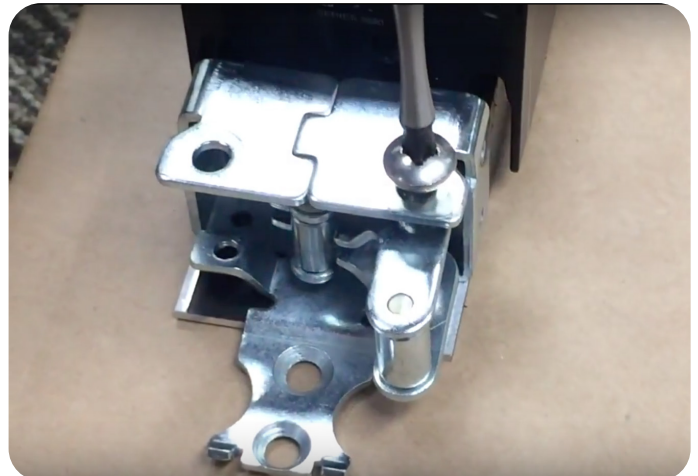
## Optional STEP - How to change hand-

- A. Remove the Axle screw and lifting arm.

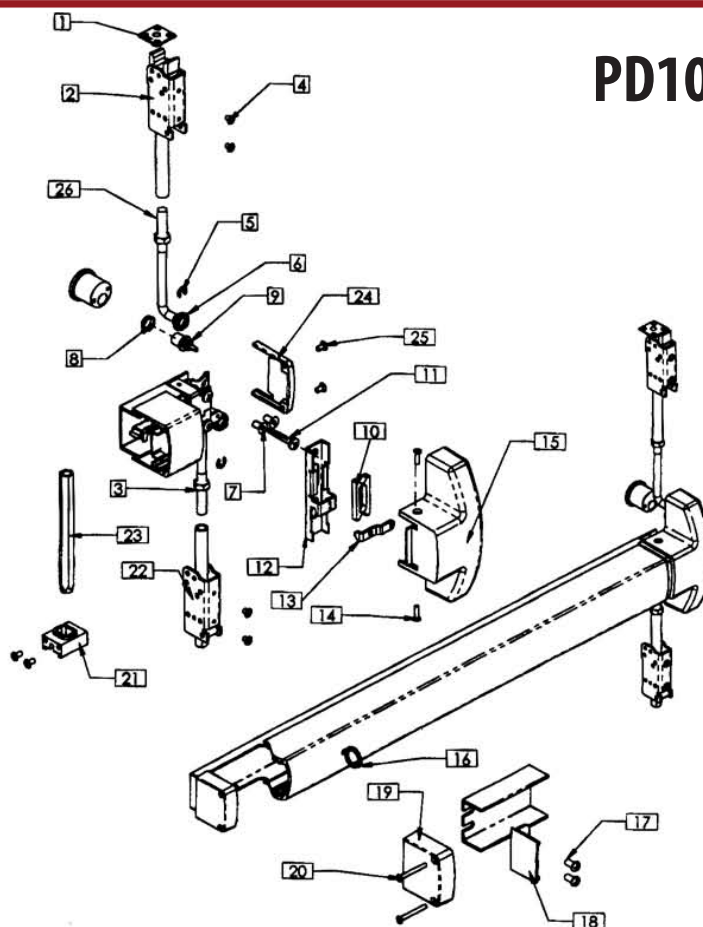
Lifting arm.



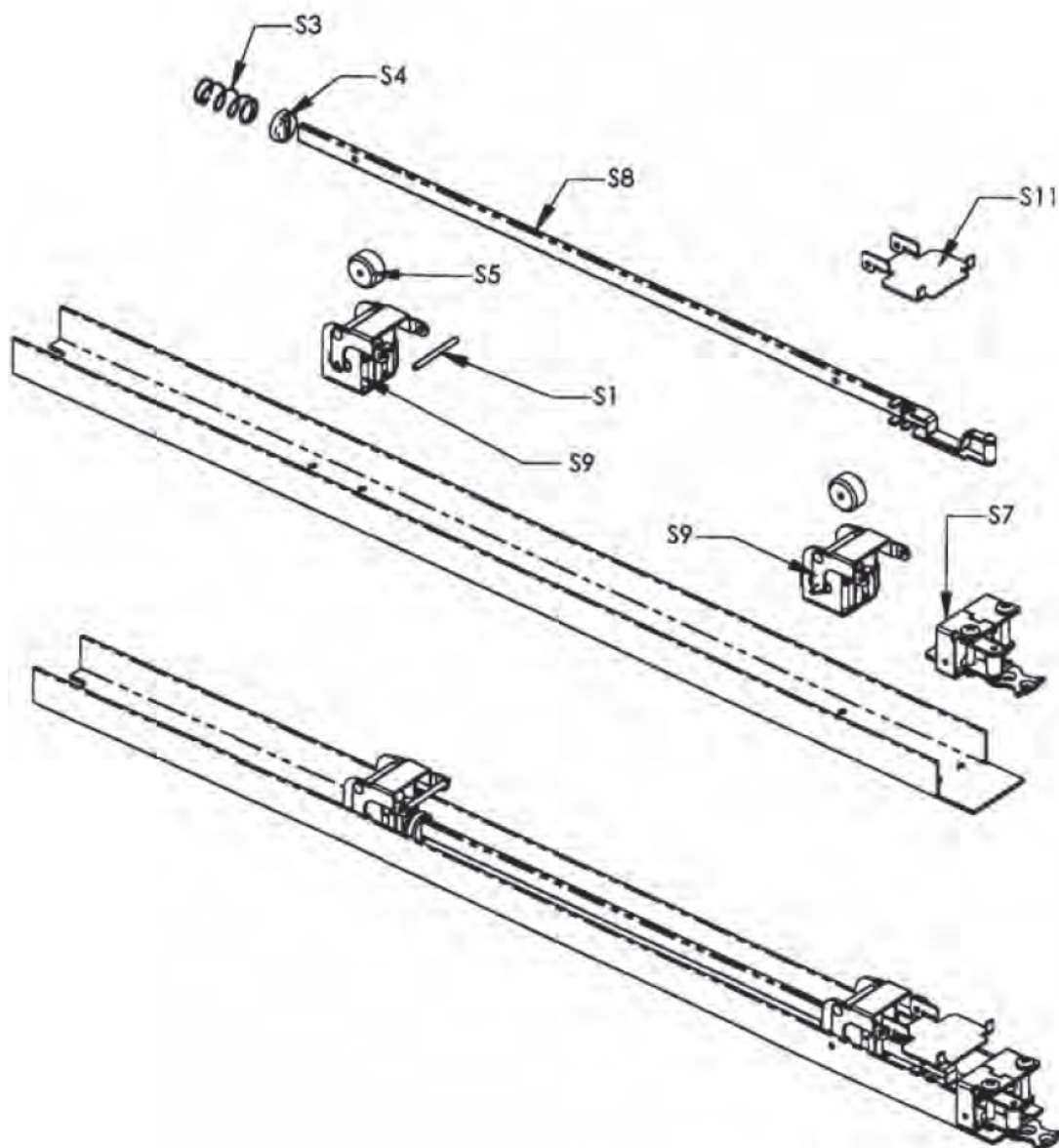
- B. Flip the lifting arm to the other side of the assembly. Re-install Axle screw and tighten.



# PD10 Parts Breakdown



Reference Number	Description	Part Number	Quantity Per Device
1	Top Strike Kit - SS Consists of:	9038	1
	Top Strike (1 ea.)	16001238	
	Strike Shim (3 ea.)	16001118	
2	Top Latch Assembly	42	1
3	Jamb Nut	806	2
4	Latch Housing Screw	811-CL, 811-BR	4
5	Retaining E-Ring	809	2
6	Rod Bushing	810	2
7	Lock Stile Mounting Screw	816	2
8	Cylinder Bushing	16001004	1
9	Pinion	16001007	1
10	Retractor	16001003	1
11	Axle Screw	3	1
12	Traveler	16001098	1
13	Pinion Support Bracket	821	1
14	Cover Screw	804	2
15	Center Case Cover	40	1
16	Dogging Key	819	1
17	Hinge Stile Mounting Screw	801	2
18	Channel End Cap	33	1
19	Hinge Stile Push Bar End Cap	30	1
20	End Cap Mounting Screw	802	2
21	Weighted Latch Guide w/ Screws	77	1
22	Bottom Latch Assy - Spring	45	1
23	Bottom Latch Assy - Weighted	76	1
24	Lock Stile End Cap	50	1
25	LS End Cap Mounting Screw	838	2
26	Vertical Rod w/ locking nut	16001015	2



<i>Reference Number</i>	<i>Description</i>	<i>Part Number</i>	<i>Quantity Per Device</i>
S1	Axle Pins	14	2
S3	Spring	23	1
S4	Spring Cap	24	1
S5	Roller Stop	17	2
S7	Crank Bracket Assy.	9040	1
S8	Activating Connecting Rod	21	1
S9	Lock Stile Activating Bracket	9034	2
S11	Push Bar Bracket	15	1