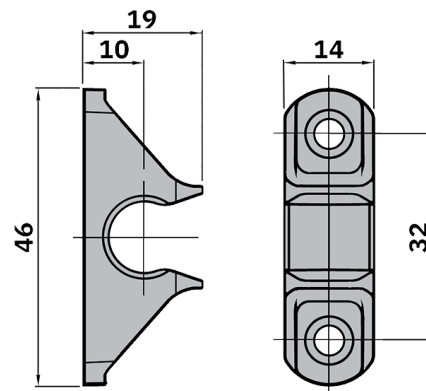


Declaration of Performance Type 2 COMPACT Push-on



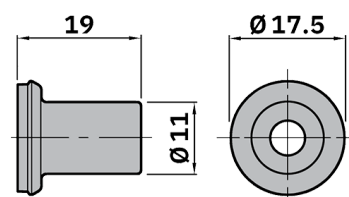
Button-fix product codes	171-040-11 (100 pack) 171-040-12 (12 pack)
EAN barcodes	5060740150521 (100 pack) 5060740150538 (12 pack)
Component drawing numbers	171-1-013A (Fix housing) 171-1-011C (Button)
Supplier	Buttonfix Limited Unit A, 1 Britton Street, London EC1M 5NW, UK
EU Authorised Representative	AR Experts BV, Boeingavenue 209, 1119PD, Schiphol-Rijk, The Netherlands
Country of manufacture	United Kingdom
Product description	Panel connector intended for furniture construction and interior fittings
Material	Acetal, Ultraform N2320 (Fix) & Nylon PA6, 30% glass fill, Altech A 2030/109 (Button)
Harmonised Standards	There are no applicable EU Harmonised Standards for this product
Independent test reports	Composite Test & Evaluation: CTE-WO-9011 (12/11/2025)(available on website)
Guide loads	Four Type 2 COMPACT Push-on fasteners can support up to 60kg (132 lbs) on a vertical panel, provided that the screws and substrate are properly matched and all other installation instructions are complied with. Never use Push-on Fixes on ceiling panels.
Web address	www.button-fix.com/products/button-fix-type-2-compact

Fix dimensions



Mass = 5.7 g

Button dimensions



Mass = 2.0 g



Philip Hall, Technical Manager
London, November 2025



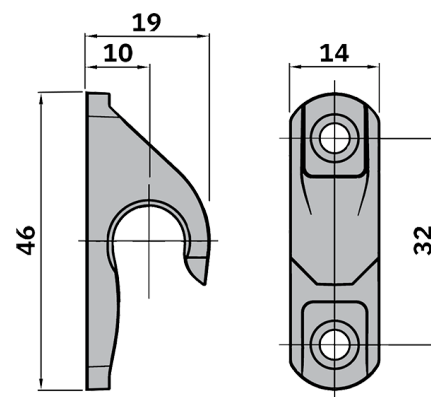
Declaration of Performance

Type 2 COMPACT Drop-down



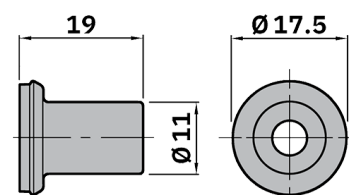
Button-fix product codes	171-040-21 (100 pack) 171-040-22 (12 pack)
EAN barcodes	5060740150552 (100 pack) 5060740150569 (12 pack)
Component drawing numbers	171-1-014A (Fix housing) 171-1-011C (Button)
Supplier	Buttonfix Limited Unit A, 1 Britton Street, London EC1M 5NW, UK
EU Authorised Representative	AR Experts BV, Boeingavenue 209, 1119PD, Schiphol-Rijk, The Netherlands
Country of manufacture	United Kingdom
Product description	Panel connector intended for furniture construction and interior fittings
Material	Nylon PA6, 30% glass fill, Altech A 2030/109 (Both Fix and Button)
Harmonised Standards	There are no applicable EU Harmonised Standards for this product
Independent test reports	Composite Test & Evaluation: CTE-WO-9011 (12/11/2025)(available on website)
Guide loads	Four Type 2 COMPACT Drop-down fasteners can support up to 120kg (265 lbs) on a vertical panel, and up to 20kg (44 lbs) in ceiling orientation, provided that the screws and substrate are properly matched and all other installation instructions are complied with.
Web address	www.button-fix.com/products/button-fix-type-2-compact

Fix dimensions



Mass = 5.0 g

Button dimensions



Mass = 2.0 g



Philip Hall, Technical Manager
 London, November 2025

